



Chipsmall Limited consists of a professional team with an average of over 10 year of expertise in the distribution of electronic components. Based in Hongkong, we have already established firm and mutual-benefit business relationships with customers from,Europe,America and south Asia,supplying obsolete and hard-to-find components to meet their specific needs.

With the principle of “Quality Parts,Customers Priority,Honest Operation,and Considerate Service”,our business mainly focus on the distribution of electronic components. Line cards we deal with include Microchip,ALPS,ROHM,Xilinx,Pulse,ON,Everlight and Freescale. Main products comprise IC,Modules,Potentiometer,IC Socket,Relay,Connector.Our parts cover such applications as commercial,industrial, and automotives areas.

We are looking forward to setting up business relationship with you and hope to provide you with the best service and solution. Let us make a better world for our industry!



## Contact us

Tel: +86-755-8981 8866 Fax: +86-755-8427 6832

Email & Skype: info@chipsmall.com Web: www.chipsmall.com

Address: A1208, Overseas Decoration Building, #122 Zhenhua RD., Futian, Shenzhen, China



## 150-200W Single Output General Purpose Power Supplies

### Features

- ◆ Very low cost
- ◆ Small Size
- ◆ Wide Range AC Input
- ◆ Convection or Fan Cooled
- ◆ Five year warranty
- ◆ 1.6" high (For 1U racking)



### Key Market Segments & Applications



Specifications		
Model		LS200 (Enclosed style with internal fan)   LS200/L (U channel style - no internal fan)
AC Input Voltage (300VAC for 5s)	VAC	85 - 264VAC   85 - 264VAC (3)
Input Frequency	Hz	47 - 63Hz
DC Input Voltage	VDC	120 - 373VDC*
Inrush Current (230VAC, cold start)	A	60
Power Factor	-	Meets EN61000-3-2, -3 (Typical PF 0.98/0.95)(1)
Input Current (115/230VAC)	A	3.5 / 1.7 (typical)
Temperature Coefficient	-	<0.02%/°C (0 - 50°C)
Overcurrent Protection	-	>105% of nominal or peak. Constant current style
Overvoltage Protection (2)	V	3.3V: 3.8 - 4.45V, 5V: 5.75 - 6.75V, 7.5V: 8.6 - 10.1V, 12V: 15.1 - 17.75V 15V: 17.25 - 20.25V, 24V: 30.25 - 35.5V, 36V: 41.4 - 48.6V, 48V: 60 - 69.6V
Overtemperature Protection (2)	-	Yes
Hold Up Time (115/230V input)	ms	20ms
Leakage Current (230VAC 60Hz)	mA	<1mA
Remote Sense	-	Yes
Remote On/Off	-	On: 0 - 0.8V; Off: 3 - 12V
LED Indicator	-	Green LED = On
Operating Temperature	°C	Fan or forced air rating: -25 to +70°C. Derate linearly to 60% load from +50 to +70°C
Storage Temperature	°C	-40 to +85°C
Operating Humidity	-	20 - 90% RH (non condensing)
Storage Humidity	-	10 - 95% RH (non condensing)
Cooling	-	Internal Fan (air exhausts from fan end)   Convection or customer supplied airflow
Withstand Voltage	-	Input to Ground 1.5kVAC, Input to Output 3kVAC, Output to Ground 500VAC for 1 min.
Isolation Resistance	-	>100M at 25°C & 70%RH, Output to Ground 500VDC
Vibration (non operating)	-	10 - 55Hz: 19.6m/s <sup>2</sup> constant sweep 1 min X, Y, Z for 1 hour
Shock	-	< 196.1 m/s <sup>2</sup> (20G)
Immunity	-	IEC61000-4-2, -3, -4, -5, -6, -8, -11
Safety Agency Approvals	-	UL /CSA (cUL) /IEC 60950-1 (2nd Ed), CE Mark (Additionally evaluated to EN 60950-1)
Conducted & Radiated EMI	-	EN55011/EN55022-B, FCC--B
Weight (Typ)	g	700   600
Size (LxWxH)	in	7.8 x 3.9 x 1.61"
Warranty	yrs	Five Years

Notes:

- (1) 115 / 230VAC input
- (2) Recycle AC to reset
- (3) (Derate linearly to 65% load from 115VAC to 85VAC)

\*Safety certified for AC input only

## Output Ratings

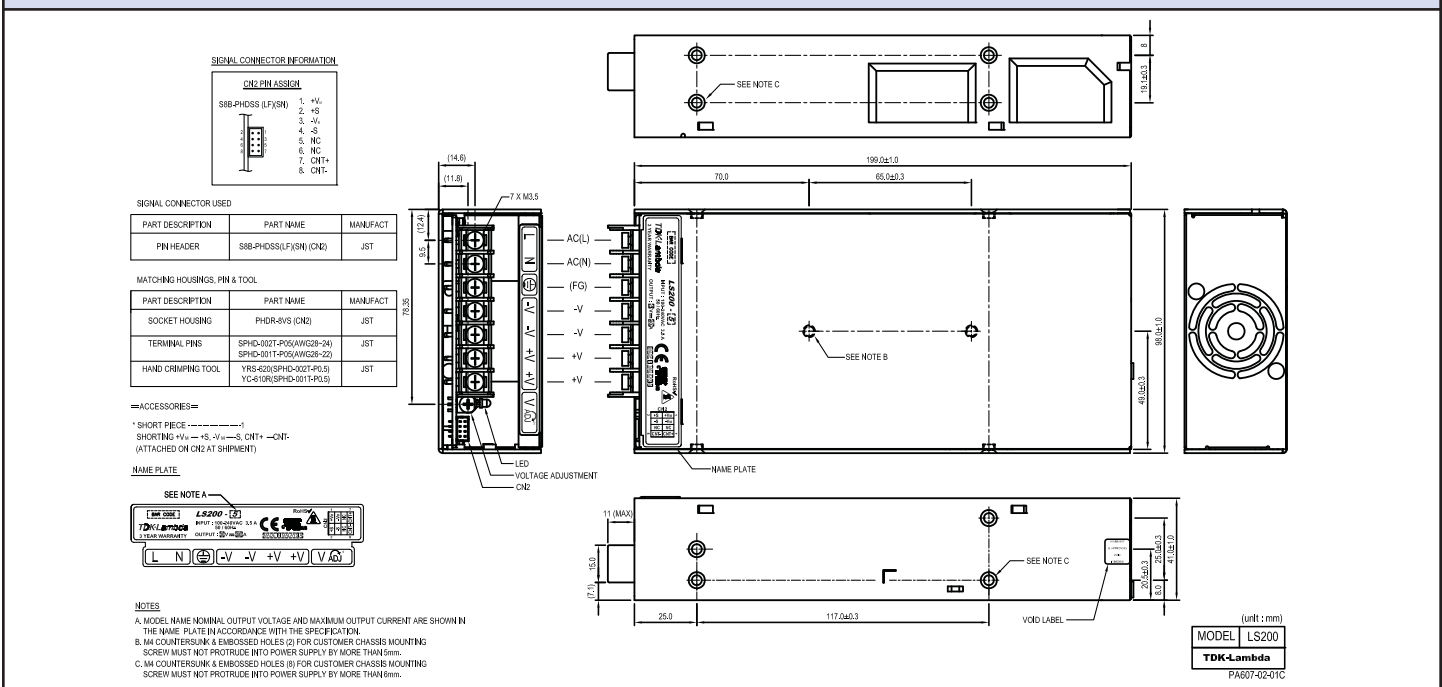
Model	Adjust Range Voltage (V)	Max Current Forced Air(A) <sup>(4)</sup>	Max Current Convect.(A) <sup>(5)</sup>	Peak Current (A)	Load Reg (mV)	Line Reg (mV)	Ripple Noise (mV)	Efficiency (typ) % <sup>(1)</sup>	
LS200-3.3	3.3V	3.0 - 3.6	40.0	N/A	-	40	16	80	67 / 68
LS200-5	5V	4.75 - 5.5	40.0	N/A	-	40	20	80	72 / 75
LS200-7.5	7.5V	6.8 - 8.2	26.7	N/A	-	40	20	80	74 / 77
LS200-12	12V	10.8 - 14.4	16.7	N/A	-	96	48	120	76 / 79
LS200-15	15V	13.5 - 16.5	13.4	N/A	-	120	60	120	80 / 83
LS200-24	24V	22 - 28.8	8.4	N/A	10.4	192	96	120	82 / 84
LS200-36	36V	32 - 40	5.6	N/A	6.9	288	144	150	82 / 85
LS200-48	48V	42 - 57.6	4.2	N/A	-	384	192	200	82 / 85
LS200-3.3/L	3.3V	3.0 - 3.6	40.0	26	-	40	16	80	67 / 68
LS200-5/L	5V	4.75 - 5.5	40.0	26	-	40	20	80	72 / 75
LS200-7.5/L	7.5V	6.8 - 8.2	26.7	17.3	-	40	20	80	74 / 77
LS200-12/L	12V	10.8 - 14.4	16.7	11.6	-	96	48	120	76 / 79
LS200-15/L	15V	13.5 - 16.5	13.4	9.3	-	120	60	120	80 / 83
LS200-24/L	24V	22 - 28.8	8.4	5.8	10.4	192	96	120	82 / 84
LS200-36/L	36V	32 - 40	5.6	3.9	6.9	288	144	150	82 / 85
LS200-48/L	48V	42 - 57.6	4.2	2.9	-	384	192	200	82 / 85

**Notes**

(4) With internal fan version LS200-xx or LS200-xx/L version with external airflow.

(5) See Installation manual for derating curve.

## Outline Drawing



## Other Related Products

LS25 - 150	25W to 150W low cost
HWS15 - 1800	15W to 1800W limited lifetime warranty
SWS300 - 1000	300 to 1000W single output

## Options

Suffix	Description
/L	No cover or fan (U channel)
Blank	Cover and fan

For Additional Information, please visit [us.tdk-lambda.com/lp/products/lis-series.htm](http://us.tdk-lambda.com/lp/products/lis-series.htm)

