



Chipsmall Limited consists of a professional team with an average of over 10 year of expertise in the distribution of electronic components. Based in Hongkong, we have already established firm and mutual-benefit business relationships with customers from,Europe,America and south Asia,supplying obsolete and hard-to-find components to meet their specific needs.

With the principle of “Quality Parts,Customers Priority,Honest Operation,and Considerate Service”,our business mainly focus on the distribution of electronic components. Line cards we deal with include Microchip,ALPS,ROHM,Xilinx,Pulse,ON,Everlight and Freescale. Main products comprise IC,Modules,Potentiometer,IC Socket,Relay,Connector.Our parts cover such applications as commercial,industrial, and automotives areas.

We are looking forward to setting up business relationship with you and hope to provide you with the best service and solution. Let us make a better world for our industry!



Contact us

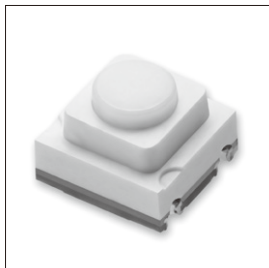
Tel: +86-755-8981 8866 Fax: +86-755-8427 6832

Email & Skype: info@chipsmall.com Web: www.chipsmall.com

Address: A1208, Overseas Decoration Building, #122 Zhenhua RD., Futian, Shenzhen, China



LS38 Series



特徴 Features

1. 小型・薄型、高フィーリング
Compact and thin, high sensitivity
2. 防塵・防水構造
Dust- and waterproof mechanism

用途 Application

- ・カーオーディオ機器
Car audio devices
- ・各種AV機器
Various AV devices
- ・キーレスエントリー
Keyless entry device

(Ta 25℃)

● 電氣的・機械的特性 Electrical and Mechanical Characteristics

Item	スイッチ作動力 Switch operating force			
	0.90N	1.76N	2.35N	4.20N
最大定格 Maximum rating	DC12V 20mA			
接続抵抗 Contact resistance	100mΩ以下 100mΩ or less			
絶縁抵抗 Insulation resistance	100MΩ以上 100MΩ or more			
耐電圧 Withstanding voltage	AC250V 1分間 AC250V for one minute			
バウンス Bounce	20ms以下 20ms or less			
ストローク Stroke	0.11mm	0.15mm		
作動力 Operating force	0.90±0.40N	1.76±0.49N	2.35±0.59N	4.20±0.70N
動作寿命 Operating life (times)	20万回以上 200,000 or more	10万回以上 100,000 or more	5万回以上 50,000 or more	10万回以上 100,000 or more

● 製品コード Product code

LS 38

シリーズ名
Series

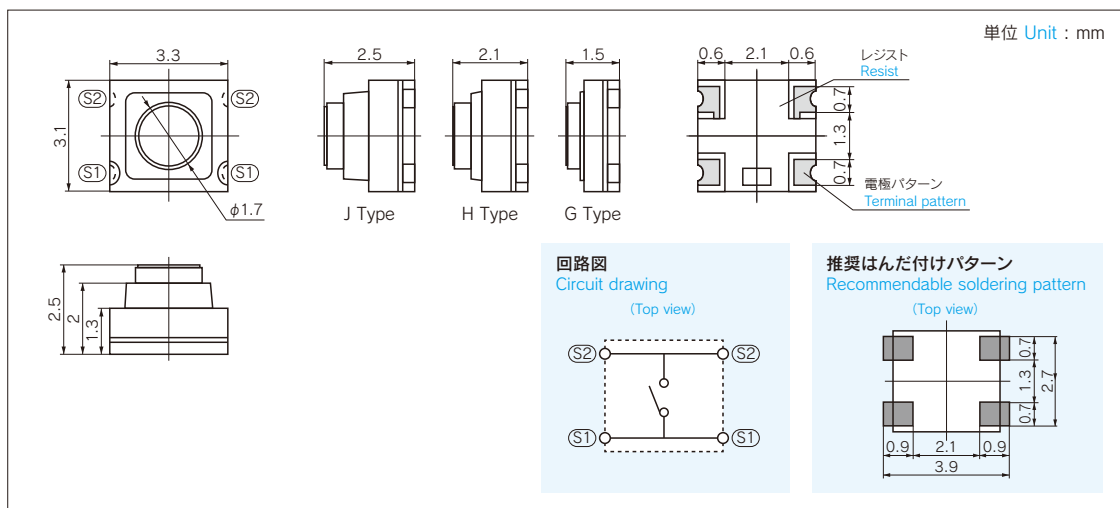
スイッチ高さ
Thickness
G: 1.5mm
H: 2.1mm
J: 2.5mm

操作荷重
Operating force
1: 0.90N
2: 1.76N
3: 2.35N
5: 4.20N

納入形態
Packing mode
T: テーピング
Tape and reel
無記入: ハバルク
No coded:
Bulk packing

TACTILE SWITCH共通番号
Common for TACTILE SWITCHes

● 外形寸法図 Outline drawing



● LS38 Seriesを車載製品に使用する場合には、当社までご連絡願います。
Please contact us when using LS38 Series installing on the vehicle-mounted products.

包装数量: J/H 3,000個×2リール(φ 330mm) Loaded quantity: J/H 3,000 pcs.×2 reels (φ 330mm)
G 4,000個×2リール(φ 330mm) G 4,000 pcs.×2 reels (φ 330mm)