



Chipsmall Limited consists of a professional team with an average of over 10 year of expertise in the distribution of electronic components. Based in Hongkong, we have already established firm and mutual-benefit business relationships with customers from,Europe,America and south Asia,supplying obsolete and hard-to-find components to meet their specific needs.

With the principle of “Quality Parts,Customers Priority,Honest Operation,and Considerate Service”,our business mainly focus on the distribution of electronic components. Line cards we deal with include Microchip,ALPS,ROHM,Xilinx,Pulse,ON,Everlight and Freescale. Main products comprise IC,Modules,Potentiometer,IC Socket,Relay,Connector.Our parts cover such applications as commercial,industrial, and automotives areas.

We are looking forward to setting up business relationship with you and hope to provide you with the best service and solution. Let us make a better world for our industry!



Contact us

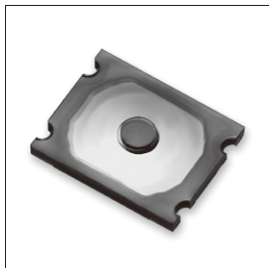
Tel: +86-755-8981 8866 Fax: +86-755-8427 6832

Email & Skype: info@chipsmall.com Web: www.chipsmall.com

Address: A1208, Overseas Decoration Building, #122 Zhenhua RD., Futian, Shenzhen, China



LS65 Series



特徴 Features

1. 小型・薄型、高フィーリング
Compact and thin, high sensitivity
2. 防塵・防水構造
Dust- and waterproof mechanism
3. アクチュエーター付き
Actuator equipped

用途 Application

- ・スマートフォン、携帯端末
Smartphone, mobile device
- ・各種AV機器
Various AV devices

(Ta 25℃)

● 電氣的・機械的特性 Electrical and Mechanical Characteristics

Item	スイッチ作動力 Switch operating force
	3.33N
最大定格 Maximum rating	DC12V 20mA
接続抵抗 Contact resistance	100mΩ以下 100mΩ or less
絶縁抵抗 Insulation resistance	100MΩ以上 100MΩ or more
耐電圧 Withstanding voltage	AC250V 1分間 AC250V for one minute
バウンス Bounce	20ms以下 20ms or less
ストローク Stroke	0.15mm
作動力 Operating force	3.33±0.83N
動作寿命 Operating life (times)	30万回以上 300,000 or more

● 製品コード Product code

LS 65 C

シリーズ名
Series

操作荷重
Operating force
6:3.33N

アクチュエーター付き
With actuator

納入形態
Packing mode
T:テーピング
Tape and reel
無記入:バルク
No coded:
Bulk packing

TACTILE SWITCH共通番号
Common for TACTILE SWITCHes

● 外形寸法図 Outline drawing

