



Chipsmall Limited consists of a professional team with an average of over 10 year of expertise in the distribution of electronic components. Based in Hongkong, we have already established firm and mutual-benefit business relationships with customers from,Europe,America and south Asia,supplying obsolete and hard-to-find components to meet their specific needs.

With the principle of "Quality Parts,Customers Priority,Honest Operation,and Considerate Service",our business mainly focus on the distribution of electronic components. Line cards we deal with include Microchip,ALPS,ROHM,Xilinx,Pulse,ON,Everlight and Freescale. Main products comprise IC,Modules,Potentiometer,IC Socket,Relay,Connector.Our parts cover such applications as commercial,industrial, and automotives areas.

We are looking forward to setting up business relationship with you and hope to provide you with the best service and solution. Let us make a better world for our industry!



## Contact us

Tel: +86-755-8981 8866 Fax: +86-755-8427 6832

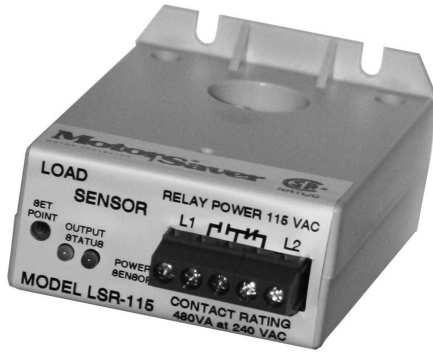
Email & Skype: info@chipsmall.com Web: www.chipsmall.com

Address: A1208, Overseas Decoration Building, #122 Zhenhua RD., Futian, Shenzhen, China



# LSR-XXX SERIES

## Load sensor



## Description

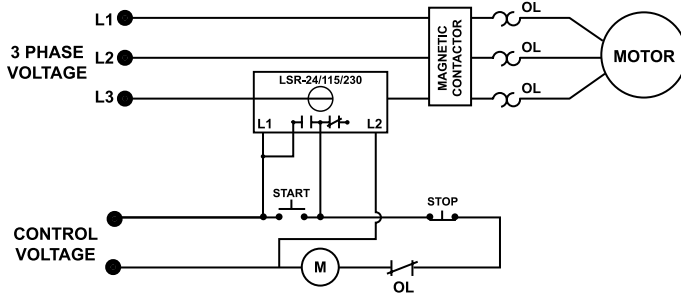
The LSR-xxx Series load sensors use current levels to determine feed rates, tool wear, loss of prime on pumps, mixer viscosity and all types of overload and underload conditions. They may also be used to stage pump motors, chillers and other machinery. These devices combine a current transformer (CT) with Form C (SPDT) relay contacts to switch alarm circuits, contactors or any resistive or inductive load. One simple screwdriver adjustment will calibrate the sensor for all single-phase or 3-phase applications up to 100hp.

## Features

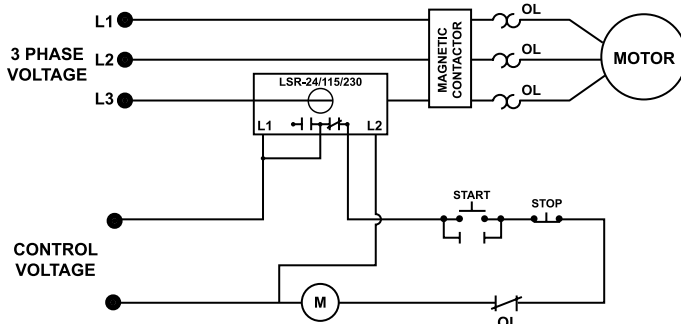
- Can monitor current of motors up to 100Hp
- Fine adjustment with 20-turn pot
- Status LEDs

## Wiring Diagram

TYPICAL WIRING DIAGRAM FOR LOAD LOSS DETECTION



TYPICAL WIRING DIAGRAM FOR OVERLOAD DETECTION



## Specifications

### Functional Characteristics

<b>Isolation</b>	600VAC rms
<b>Current Adjustment Range (Typical)</b>	2-100A
<b>Current Adjustment Range (Min-Max)</b>	0.5-135A
<b>Trip Setpoint</b>	Adjustable to ±1% range

### Input Characteristics

<b>Control Power:</b>	
<b>LSR-24</b>	24VAC
<b>LSR-115</b>	115VAC
<b>LSR-230</b>	230VAC
<b>Max Current Ratings</b>	135A max. continuous

### Output Characteristics

<b>Output Contact Rating (SPDT):</b>	
<b>Pilot Duty</b>	480VA @ 240VAC
<b>General Purpose</b>	10A
<b>General Characteristics</b>	
<b>Temperature Range</b>	-20° to 70°C (-4° to 158°F)
<b>Wire Size</b>	#12-24AWG
<b>Hole Size</b>	0.725" diameter
<b>Terminal Torque</b>	7 in.-lbs.

<b>Safety Marks</b>	(File #46510)
<b>CSA, CSA-NRTL/C</b>	IEC 60947
<b>CE</b>	
<b>Dimensions</b>	<b>H</b> 42.42 mm (1.67"); <b>W</b> 58.42 mm (2.3"); <b>D</b> 90.43 mm (3.56")

<b>Weight</b>	0.4 lb. (6.4 oz., 181.44 g)
<b>Mounting Method</b>	Four #6 screws 3/4" in length

**Caution:** This product should not be relied upon solely for safety of life or safety applications.

## Ordering Information

MODEL	LINE VOTAGE
LSR-24	24VAC
LSR-115	115VAC
LSR-230	230VAC