



Chipsmall Limited consists of a professional team with an average of over 10 year of expertise in the distribution of electronic components. Based in Hongkong, we have already established firm and mutual-benefit business relationships with customers from,Europe,America and south Asia,supplying obsolete and hard-to-find components to meet their specific needs.

With the principle of "Quality Parts,Customers Priority,Honest Operation,and Considerate Service",our business mainly focus on the distribution of electronic components. Line cards we deal with include Microchip,ALPS,ROHM,Xilinx,Pulse,ON,Everlight and Freescale. Main products comprise IC,Modules,Potentiometer,IC Socket,Relay,Connector.Our parts cover such applications as commercial,industrial, and automotives areas.

We are looking forward to setting up business relationship with you and hope to provide you with the best service and solution. Let us make a better world for our industry!



Contact us

Tel: +86-755-8981 8866 Fax: +86-755-8427 6832

Email & Skype: info@chipsmall.com Web: www.chipsmall.com

Address: A1208, Overseas Decoration Building, #122 Zhenhua RD., Futian, Shenzhen, China



THIS DRAWING IS A CONTROLLED DOCUMENT.

-	-	-	189	REF	819999-1	PLATE, SWITCH	124	-	-	-	59
-	-	-	188	REF	820000-1	CAM, ACTUATOR	123	-	-	-	58
REF	460277-1	ASS'Y, AIR FEED	187	-	-	-	122	-	-	-	57
1	692655-5	VALVE ASSY	186	-	-	-	121	-	-	-	56
1	24042-2	VALVE, SHUT OFF	185	-	-	-	120	-	-	-	55
-	-	-	184	-	-	-	119	1	22733-7	SCR., BHC, NYLOK 8-32 .38	54
-	-	-	183	1	4-21006-9	SCR., SET 10-32 X .188	118	1	819404-2	ANVIL	53
3	2-21000-6	SCR., SHC 8-32 X .38	182	-	-	-	117	2	2-21000-1	SCR., SHC. 6-32 X .62	52
-	-	-	181	2	2-21000-8	SCR., SHC. 8-32 X .62	116	1	819396-1	PLATE, REAR SHEAR	51
-	-	-	180	4	3-21000-5	SCR., SHC. 10-32 X .50	115	1	819395-1	SPACER, SHEAR PLATE, FRONT	50
-	-	-	179	-	-	-	114	1	819403-1	PLATE, FRONT SHEAR	49
-	-	-	178	-	-	-	113	1	819392-1	PLATE, STRIP GUIDE	48
-	-	-	177	-	-	-	112	1	819418-1	PLATE, BASE	47
-	-	-	176	2	2-21002-6	SCR., BHC. 10-32 X .38	111	1	819390-1	RAM	46
-	-	-	175	-	-	-	110	2	21022-2	NUT, HEX, SELF LOCKING 8-32	45
-	-	-	174	-	-	-	109	2	2-22281-5	SPRING, COMPRESSION	44
-	-	-	173	-	-	-	108	2	21055-6	WASHER, PLAIN #8	43
-	-	-	172	1	374999	PLATE, TENSION ADJUSTMENT	107	2	1-21989-5	SCR., SOC. HD. SHLD .188 X 1.25	42
1	852403-1	CAP, RIGHT RAM	171	2	21018-6	NUT, HEX 8-32	106	1	819389-1	DRAG	41
-	-	-	170	2	21078-8	SCR., SET 8-32 X .50	105	1	819419-1	MOUNT, FEED BRACKET	40
-	-	-	169	-	-	-	104	2	21024-5	WASHER, LOCK #10	39
-	-	-	168	-	-	-	103	4	21055-7	WASHER, PLAIN #10	38
-	-	-	167	-	-	-	102	2	4-21000-1	SCR., SHC. 10-32 X 1.50	37
-	-	-	166	-	-	-	101	2	3-21001-4	SCR., SHC. 3/8-16 X .88	36
-	-	-	165	-	-	-	100	1	21001-2	SCR., SHC. 1/4-20 X .50	35
-	-	-	164	-	-	-	99	2	21001-9	SCR., SHC. 1/4-20 X 1.75	34
-	-	-	163	-	-	-	98	1	852404-1	HOUSING, APPLICATOR	33
-	-	-	162	-	-	-	97	3	17177-1	SCR., BHC 1/4-20 X .75	32
-	-	-	161	-	-	-	96	-	-	-	31
-	-	-	160	2	3-21000-8	SCR., SHC. 10-32 X .88	95	1	819374-1	CRIMPER, WIRE .120 "F"	30
1	819397-1	SPACER, SHEAR PLATE, REAR	159	1	844297-1	CAP, RAM, LEFT	94	1	4-690407-1	SPACER, INSULATION	29
1	820191-1	PLATE, HOLD DOWN	158	-	-	-	93	1	6-21002-6	SCR, BHC 10-24 X .875	28
2	21017-2	SCR., DRIVE #2 X .19	157	-	-	-	92	1	819422-1	SPACER, CRIMPER SCREW	27
1	461264-1	PLATE, IDENTIFICATION	156	2	2-21000-7	SCR., SHC 8-32 X .50	91	1	819372-2	CRIMPER, INSULATION "O"	26
-	-	-	155	2	2-21002-6	SCR., BHC 10-32 X .38	90	-	-	-	25
-	-	-	154	1	819398-1	BLADE, SLUG	89	1	22292-2	COLLAR, SHAFT .18 ID.	24
-	-	-	153	1	844296-1	PLATE, EJECTOR	88	2	21045-6	RING, RETAINING "C"	23
-	-	-	152	2	21018-5	NUT HEX #6	87	1	2-23620-9	PIN, GROOVED .250 DIA	22
-	-	-	151	1	458778-3	SPACER, STRIPPER	86	2	1-22170-8	PIN, COTTER	21
REF	24042-2	VALVE, SLEEVE	150	1	853818-1	PLATE, EJECTOR	85	1	22202-4	NUT, HEX 5/16-24	20
-	-	-	149	2	2-21000-1	SCR SHC. 6-32 X .62	84	2	23241-6	BALL, STEEL	19
-	-	-	148	-	-	-	83	2	690603-1	SPRING, ASSIST	18
-	-	-	147	-	-	-	82	2	690170-1	SPRING, COMPRESSION	17
-	-	-	146	1	460563-1	SHROUD, GUARD	81	2	23030-1	SCR., SHC. 6-32 X .25 (LOC-WEL)	16
-	-	-	145	-	-	-	80	1	22480-5	WASHER, WAVE SPRING	15
-	-	-	144	-	-	-	79	1	690142-3	DISC, INSULATION CRIMP	14
-	-	-	143	1	21009-2	SCR., SKT. SET 1/4-20 X .25 (LOC-WEL)	78	1	690212-1	POST, RAM	13
-	-	-	142	1	690191-1	PLUG, NYLON	77	1	6-690141-8	DISC, WIRE CRIMP	12
-	-	-	141	1	819420-1	SPACER, MOUNT	76	1	690125-1	SHIM	11
-	-	-	140	1	819421-1	FINGER, FEED	75	1	690124-1	WASHER, RAM	10
-	-	-	139	2	3-21002-4	SCR., BHC. 1/4-20 X .62	74	1	468528-1	CYLINDER, AIR	9
-	-	-	138	-	-	-	73	1	388639-2	ROD, GUIDE	8
-	-	-	137	-	-	-	72	1	461686-2	CLEVIS, FEED	7
-	-	-	136	-	-	-	71	1	459609-1	BRACKET, FEED ADJUSTMENT	6
-	-	-	135	-	-	-	70	1	376170	POSITIONER, PISTON	5
-	-	-	134	-	-	-	69	1	376169	SCREW, FEED ADJUSTING	4
-	-	-	133	-	-	-	68	1	376166	BLOCK, FEED ADJUSTMENT	3
-	-	-	132	-	-	-	67	1	376165	WASHER, CLAMP	2
-	-	-	131	-	-	-	66	1	374112	SPRING, FEED FINGER	1
-	-	-	130	4	2-21000-0	SCR., SHC. 6-32 X .50	65				
-	-	-	129	2	819391-1	GUIDE, FEED PAWL	64				
-	-	-	128	2	819393-1	GUIDE, STRIP	63				
-	-	-	127	3	2-21000-5	SHC., SHC. 8-32 X .25	62				
-	-	-	126	-	-	-	61				
1	844128-1	GUARD, FRONT	125	-	-	-	60				

QTY	PART NO	DESCRIPTION	ITEM NO
-----	---------	-------------	---------

PAD LTR	CRIMP HEIGHT	WIRE SIZE	WIRE STRIP LENGTH	
A	.071	14		63317
B	.063	16		63316
C	.057	18		63315
D	NOT USED			63314
				63512
				63582

CRIMP	SIZE	TYPE	FEED	APPL INST	
WIRE	.120	F	.755±.005	A1 8091	1217972-2
INSUL	.155	O			
WIRE RANGE	18-14	INSULATION RANGE	.150 MAX	MACHINE NO	565435-5

AMP-O-LECTRIC
AIR FEED
SHEET 1 OF 2

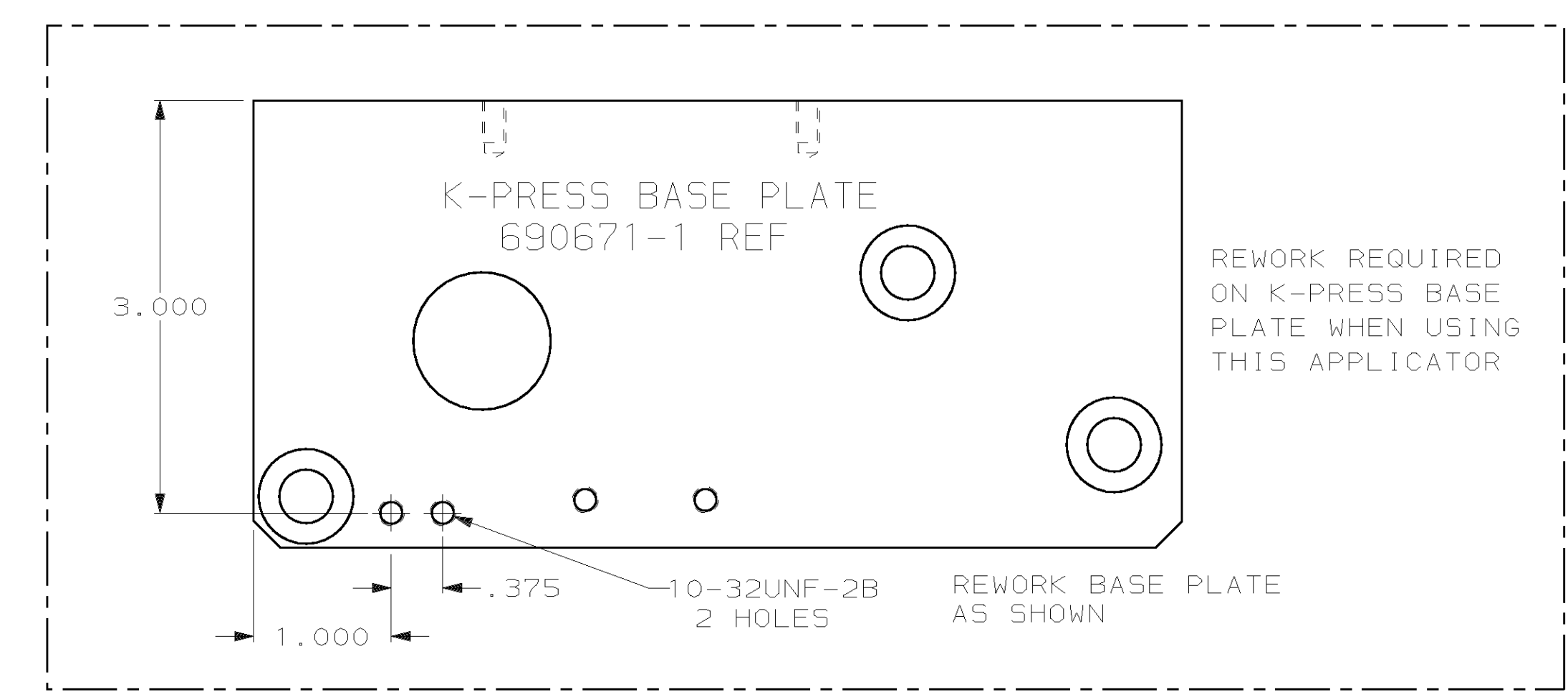
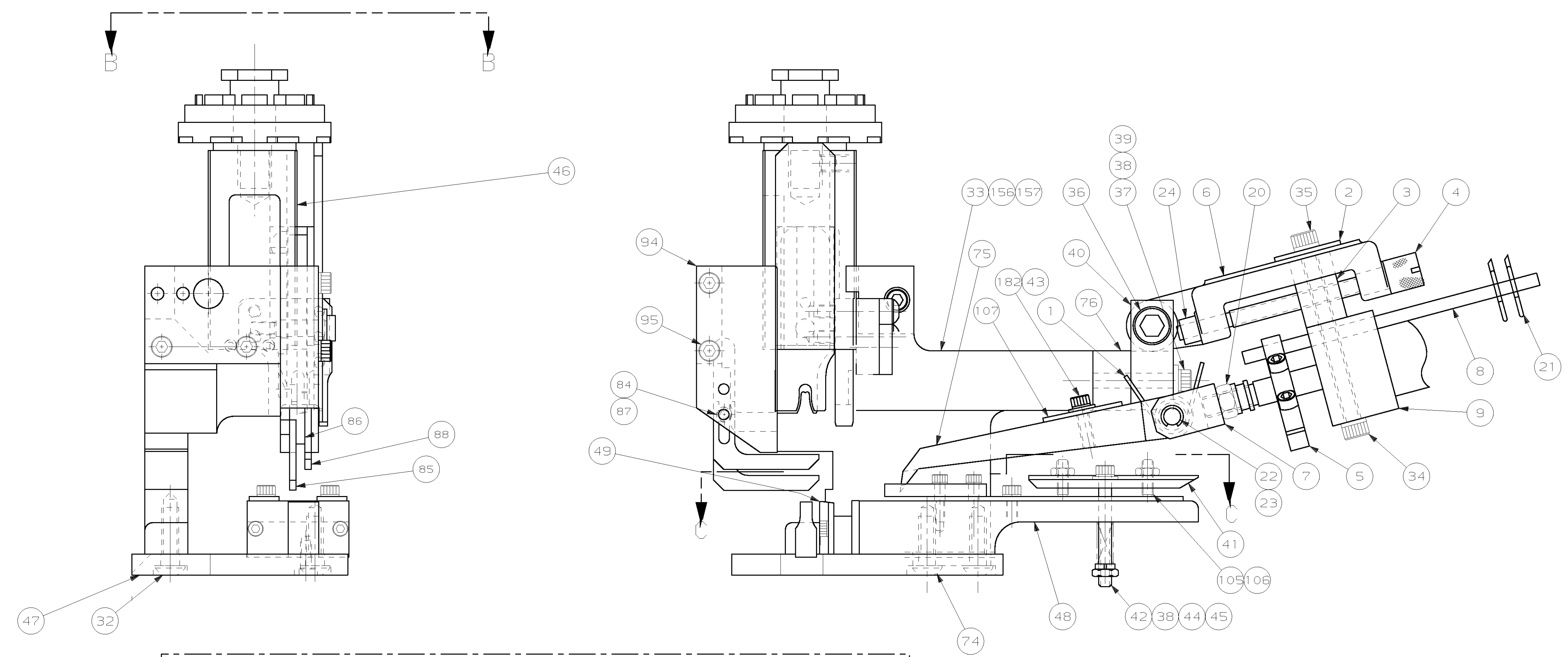
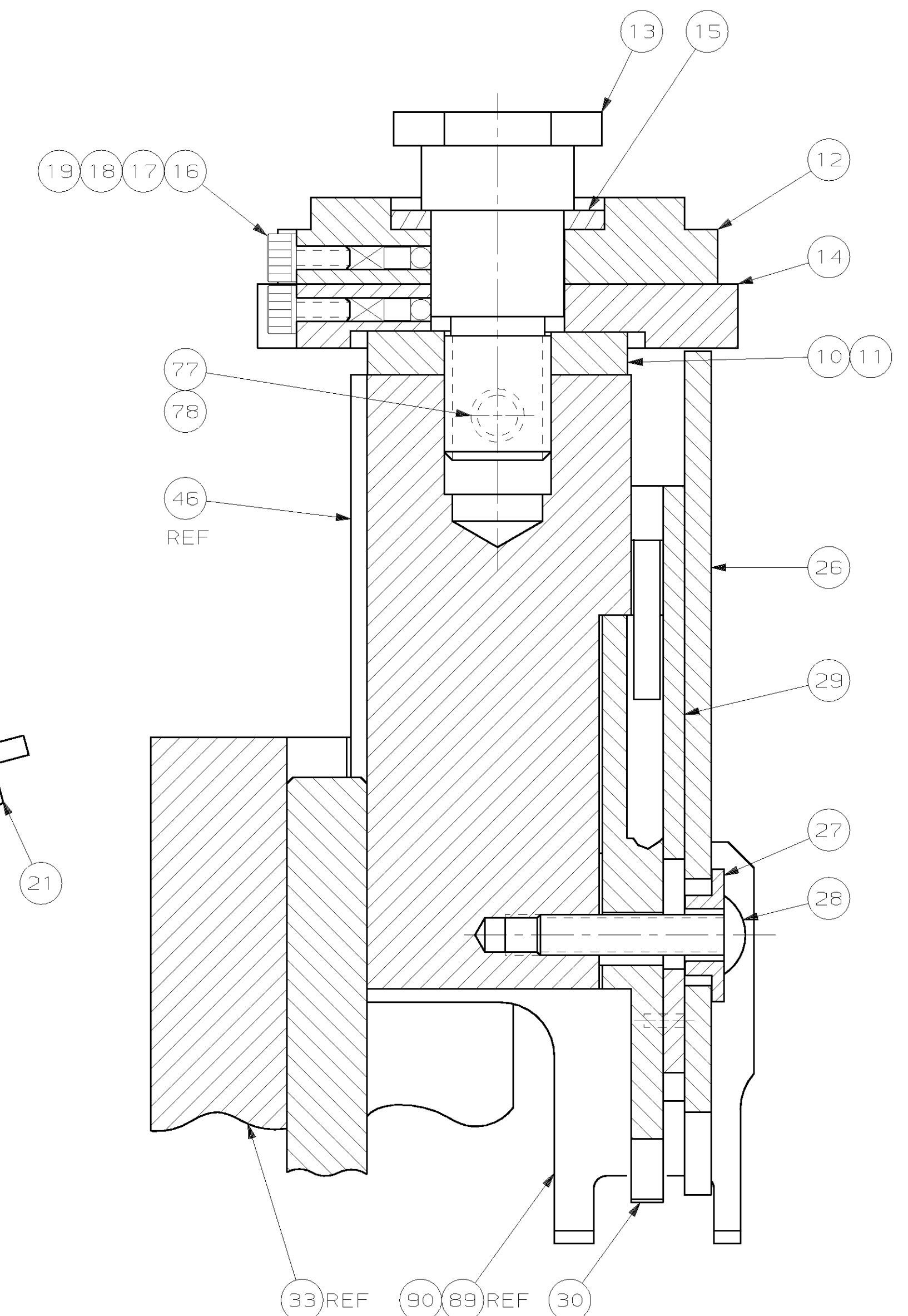
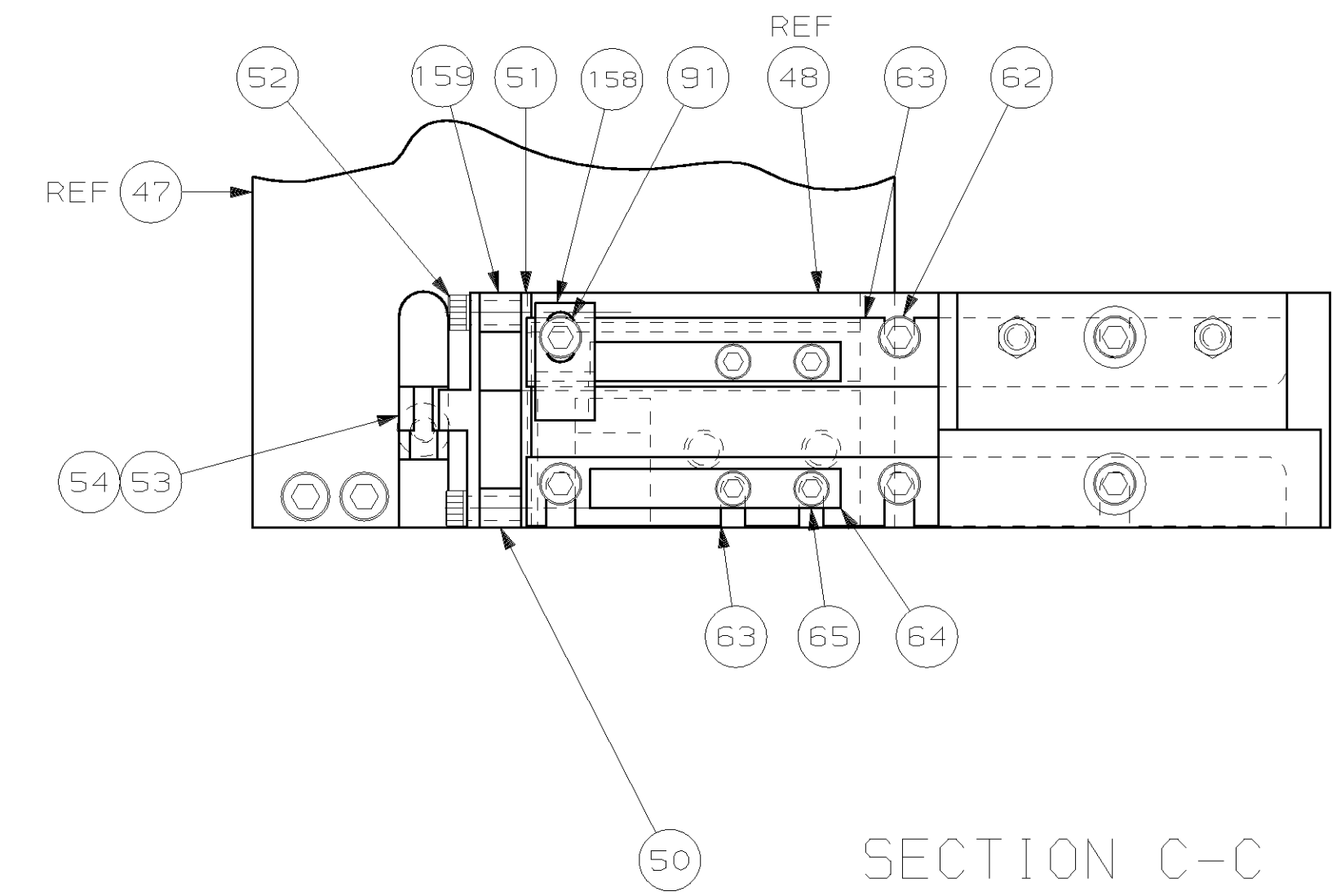
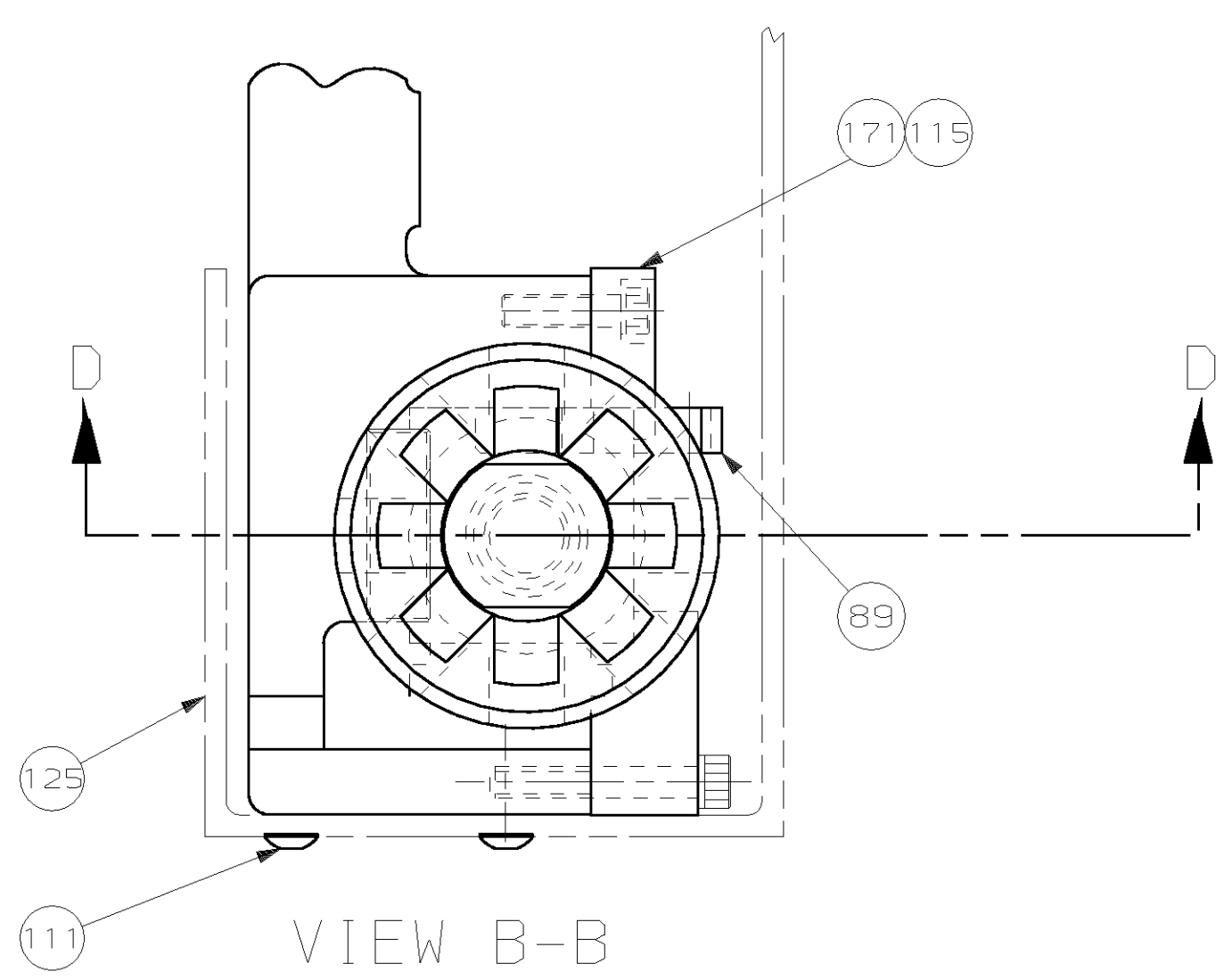
NOTES:
1 RECOMMENDED SPARE PARTS.
2 NOT SHOWN ON ASSY

REMARKS		NO	REV
APPL USED ON MACHINE PART NO		MACH SERIAL NO	DISTRIBUTION
CUSTOMER NAME		APPL SERIAL NO	ORIGINAL
ADDRESS		PURCHASE ORDER	CUSTOMER COPY
CITY		ENG APP	FIELD ENG COPY

SET UP GAGE	10-1	B3	
DR 8/17/00	APP 8/17/00		
B.HISOMAN	T.ELBIN		
CHK 8/17/00	REL		
B.HISOMAN			
A2	ECN 0150-1153-04	TE	9-04
A1	0150-0221-04	TE	2-04
A	REVISED	BH	9/00

THIS DRAWING IS UNCONTROLLED WHEN PUBLISHED BY AMP INCORPORATED. ALL RIGHTS RESERVED. MAY 18, 1999

LOC A
DIST 66



THIS DRAWING IS A CONTROLLED DOCUMENT.

THIS DRAWING IS UNCLASSIFIED - MAY 19, 1999
RELEASED FOR PUBLICATION
BY AMP INCORPORATED. ALL RIGHTS RESERVED.
AMP 1756 REV 3-92

LOC A
DIST 66

SEE SHEET 1

QTY REQD PER ASSY	DWG SIZE	PART NO	DESCRIPTION	ITEM NO
			REVISION OF EACH ASSY NO (WHEN BLANK, USE DWG REVISION)	
PARTS LIST				
DIMENSIONS IN INCHES. TOLERANCES UNLESS OTHERWISE SPECIFIED.		MATERIAL	HEAT TREAT	FINISH
2 PL DEC #		DR B.HIGMAN	APP T.ELBIN	
3 PL DEC #		CHK B.HIGMAN	REL	
4 PL DEC #		NAME MINIATURE QUICK CHANGE APPLICATOR		
ANGLES ±		SCALE 1:1		
SURF TEXTURE: ✓		DWG NO 567288-4		SHEET 2 of 2
REMOVE BURRS, BREAK SHARP EDGES .015 R MAX		REV A2		RESTRICTED TO
CASE CODE 00779		CUSTOMER AND ASSEMBLY DRAWING		