



Chipsmall Limited consists of a professional team with an average of over 10 year of expertise in the distribution of electronic components. Based in Hongkong, we have already established firm and mutual-benefit business relationships with customers from,Europe,America and south Asia,supplying obsolete and hard-to-find components to meet their specific needs.

With the principle of “Quality Parts,Customers Priority,Honest Operation,and Considerate Service”,our business mainly focus on the distribution of electronic components. Line cards we deal with include Microchip,ALPS,ROHM,Xilinx,Pulse,ON,Everlight and Freescale. Main products comprise IC,Modules,Potentiometer,IC Socket,Relay,Connector.Our parts cover such applications as commercial,industrial, and automotives areas.

We are looking forward to setting up business relationship with you and hope to provide you with the best service and solution. Let us make a better world for our industry!



## Contact us

Tel: +86-755-8981 8866 Fax: +86-755-8427 6832

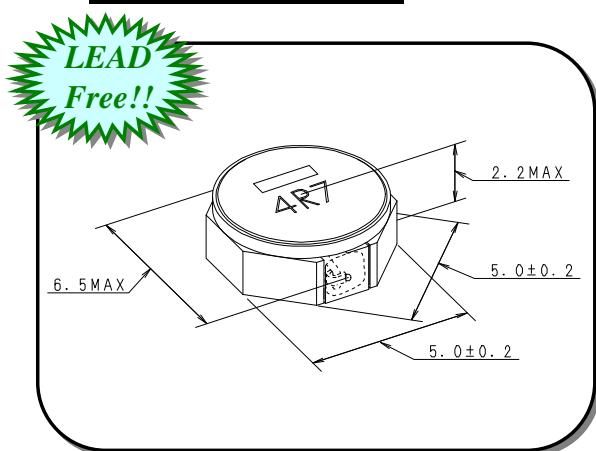
Email & Skype: info@chipsmall.com Web: www.chipsmall.com

Address: A1208, Overseas Decoration Building, #122 Zhenhua RD., Futian, Shenzhen, China



# LTF5022-D Series SMD Power Inductor

## Component Image Fig



Unit:mm

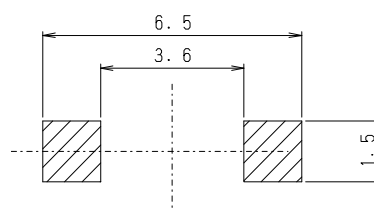
## Feature

- a) Miniature Size :  
Mount Area : 5.0mm x 5.0mm  
Low Profile : 2.2mm Max. Height
- b) Generic use for portable DC/DC Converter Line.
- c) Low Profile as a 2.2mm Height.
- d) High Rated DC Current.
- e) This Product is not used any of the LEAD Materials.
- f) Ferrite shielded component.
- g) Automatic Mounting in Tape & Reel Package.
- h) Qualified acc. AEC-Q200

## Applications :

Automotive

Recommended Land Pattern



## Electrical Specification

TDK Identification	Inductance[uH]	Test Freq. (MHz)	DC Resistance[ohm]		Rated DC Current[A]	
	Tol. (%)		Spec. (max.)	(Typ.)	Idc 1 (max.)	Idc 2 (Typ.)
LTF5022T- 1R2N3R4-D	1.2 +/-30%	1	0.031	0.025	3.87	3.43
LTF5022T- 1R8N3R1-D	1.8 +/-30%	1	0.037	0.030	3.28	3.12
LTF5022T- 2R2N2R8-D	2.2 +/-30%	1	0.043	0.036	2.84	2.88
LTF5022T- 3R3N2R5-D	3.3 +/-30%	1	0.050	0.041	2.51	2.68
LTF5022T- 4R7N2R0-D	4.7 +/-30%	1	0.074	0.062	2.03	2.18
LTF5022T- 6R8N1R7-D	6.8 +/-30%	1	0.11	0.091	1.70	1.80
LTF5022T- 100M1R3-D	10 +/-20%	1	0.16	0.13	1.37	1.51
LTF5022T- 150M1R1-D	15 +/-20%	1	0.24	0.20	1.15	1.22
LTF5022T- 220MR95-D	22 +/-20%	1	0.34	0.28	0.95	1.02
LTF5022T- 330MR77-D	33 +/-20%	1	0.49	0.41	0.77	0.85
LTF5022T- 470MR66-D	47 +/-20%	1	0.70	0.58	0.66	0.71
LTF5022T- 680MR54-D	68 +/-20%	1	1.03	0.86	0.54	0.59
LTF5022T- 101MR45-D	100 +/-20%	1	1.28	1.07	0.45	0.53

Note) Idc 1 : Depend on the Inductance Saturation. (-30% Reduction from Nominal L Value)

Idc 2 : Depend on the Self Temperature Rise (40 deg.C Typ.)

Operating Temperature Range : -40deg. C ~ +150deg.C (including Self Temp. Rise)