



Chipsmall Limited consists of a professional team with an average of over 10 year of expertise in the distribution of electronic components. Based in Hongkong, we have already established firm and mutual-benefit business relationships with customers from,Europe,America and south Asia,supplying obsolete and hard-to-find components to meet their specific needs.

With the principle of “Quality Parts,Customers Priority,Honest Operation,and Considerate Service”,our business mainly focus on the distribution of electronic components. Line cards we deal with include Microchip,ALPS,ROHM,Xilinx,Pulse,ON,Everlight and Freescale. Main products comprise IC,Modules,Potentiometer,IC Socket,Relay,Connector.Our parts cover such applications as commercial,industrial, and automotives areas.

We are looking forward to setting up business relationship with you and hope to provide you with the best service and solution. Let us make a better world for our industry!



## Contact us

Tel: +86-755-8981 8866 Fax: +86-755-8427 6832

Email & Skype: info@chipsmall.com Web: www.chipsmall.com

Address: A1208, Overseas Decoration Building, #122 Zhenhua RD., Futian, Shenzhen, China



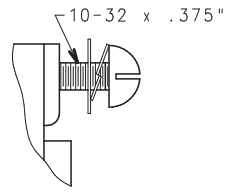
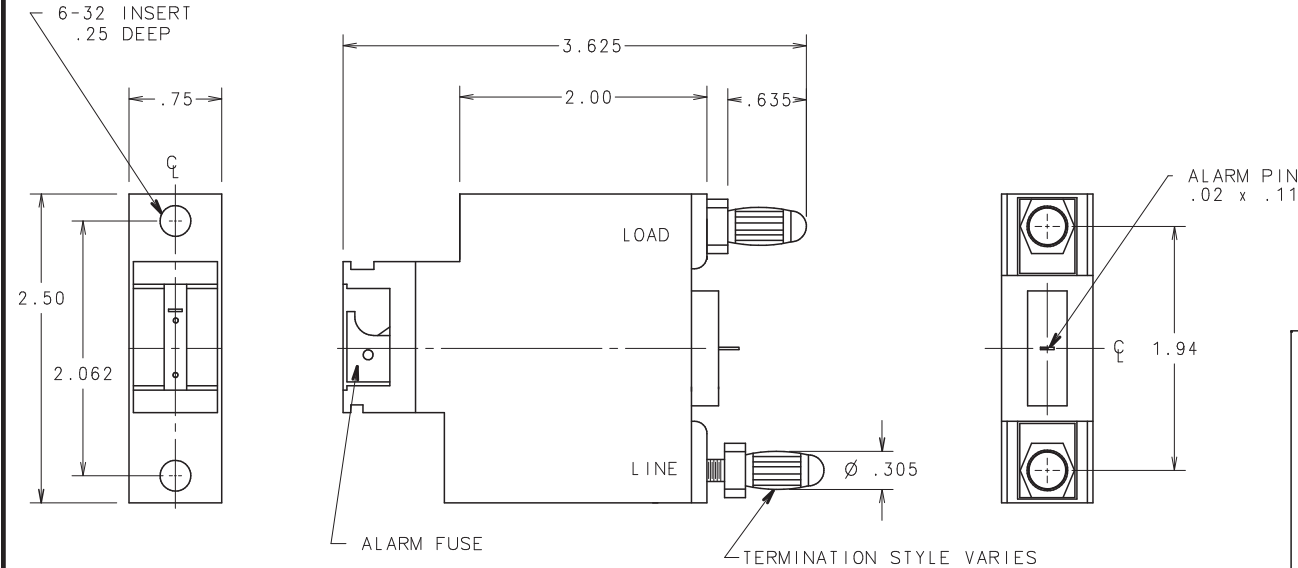
L/F PART NO.	CAT. NO.	AMP	TERMINATION STYLE	UPC CODE
LTFD0101ZX1	LTFD101-1	125A	1	079458 06200
LTFD0101ZX2	LTFD101-2	125A	2	079458 06216
LTFD0101ZX3	LTFD101-3	125A	3	079458 06217
LTFD0101ZX4	LTFD101-4	70A	4	079458 06218

PACKAGING NOTES:

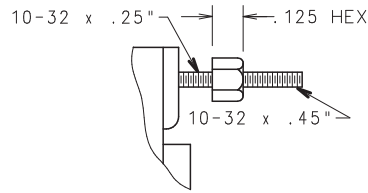
1. PACKAGING WILL BE MARKED WITH MINIMUM OF:
  - A) LITTELFUSE NAME.
  - B) LITTELFUSE PART NUMBER.
  - C) AGENCY APPROVALS (UL, CSA).
  - D) VOLTAGE AND AMPERE RATING.
  - E) QUANTITY.

NOTE:

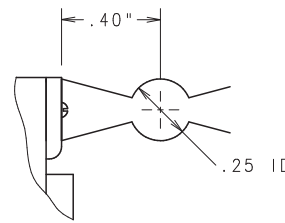
ALL ALARM FUSES SUPPLIED MUST BE MANUFACTURED BY LITTELFUSE.



SCREW  
STYLE 2



STUD  
STYLE 3



C CLIP  
STYLE 4

BULLET TERMINAL  
STYLE 1

UNLESS OTHERWISE SPECIFIED, DIMENSIONS DO NOT INCLUDE PLATING.  
 DENOTES CRITICAL CHARACTERISTICS.  
 CPK DENOTES CPK DIMENSIONS, -MINIMUM CPK VALUE  
 DENOTES A CHARACTERISTIC THAT PROVIDES AN INDICATION OF PROCESS PERFORMANCE. PROCEDURE FOR MEASUREMENT OF THIS CHARACTERISTIC IS PROVIDED IN THE LITTELFUSE INSPECTION INSTRUCTIONS.  
 DENOTES CP DIMENSIONS, -MINIMUM CP VALUE. CPK VALUE BE WITHIN THE DIMENSIONAL LIMITATIONS SPECIFIED FOR MAXIMUM TOOL LIFE.

NO		COMPONENT NO	DESCRIPTION	QTY/M	U/M
<b>BILL OF MATERIAL</b>					
COPIES TO		FINISH			
1	9	18	DATE	SCALE	FULL
2	10	19	BJJ	6/28/01	
3	12	20	DATE	SUPER DRW	
4	13	21	DATE	RAW STK WT	LBS/M
5	14	23	APPD	TOLERANCE UNLESS OTHERWISE SPECIFIED	
6	15	33	TWO PLACE DEC ±.01		
7	16	43	THREE PLACE DEC ±.005		
8	17	53	ANGULAR ±1°		
<b>TITLE</b>					
ACS 80VDC					
TLS DISCONNECT SWITCH					
RESNOSH		DRWG. NO.		FINAL	
D		LTFD0101ZX1		SERIES	

LTR	REVISION	CHK	APD
A	60599- RELEASED 6/28/01 BJJ		
B	60664 - RELEASED LTFD0101ZX2 LTFD0101ZX3, LTFD0101ZX4		
-	9/18/01 BJJ		
C	81718D-ADD ALARM FUSE NOTE 12/03/01 LDL	TN	ND
D	000593EC/D-CHG TITLE BLOCK & ADD CHART 4/23/08 LDL		

