



Chipsmall Limited consists of a professional team with an average of over 10 year of expertise in the distribution of electronic components. Based in Hongkong, we have already established firm and mutual-benefit business relationships with customers from,Europe,America and south Asia,supplying obsolete and hard-to-find components to meet their specific needs.

With the principle of “Quality Parts,Customers Priority,Honest Operation,and Considerate Service”,our business mainly focus on the distribution of electronic components. Line cards we deal with include Microchip,ALPS,ROHM,Xilinx,Pulse,ON,Everlight and Freescale. Main products comprise IC,Modules,Potentiometer,IC Socket,Relay,Connector.Our parts cover such applications as commercial,industrial, and automotives areas.

We are looking forward to setting up business relationship with you and hope to provide you with the best service and solution. Let us make a better world for our industry!



Contact us

Tel: +86-755-8981 8866 Fax: +86-755-8427 6832

Email & Skype: info@chipsmall.com Web: www.chipsmall.com

Address: A1208, Overseas Decoration Building, #122 Zhenhua RD., Futian, Shenzhen, China





LED Display Product Data Sheet LTM-0124M-01

Spec No.: DS30-2003-057

Effective Date: 08/21/2003

Revision: -

LITE-ON DCC

RELEASE

BNS-OD-FC001/A4

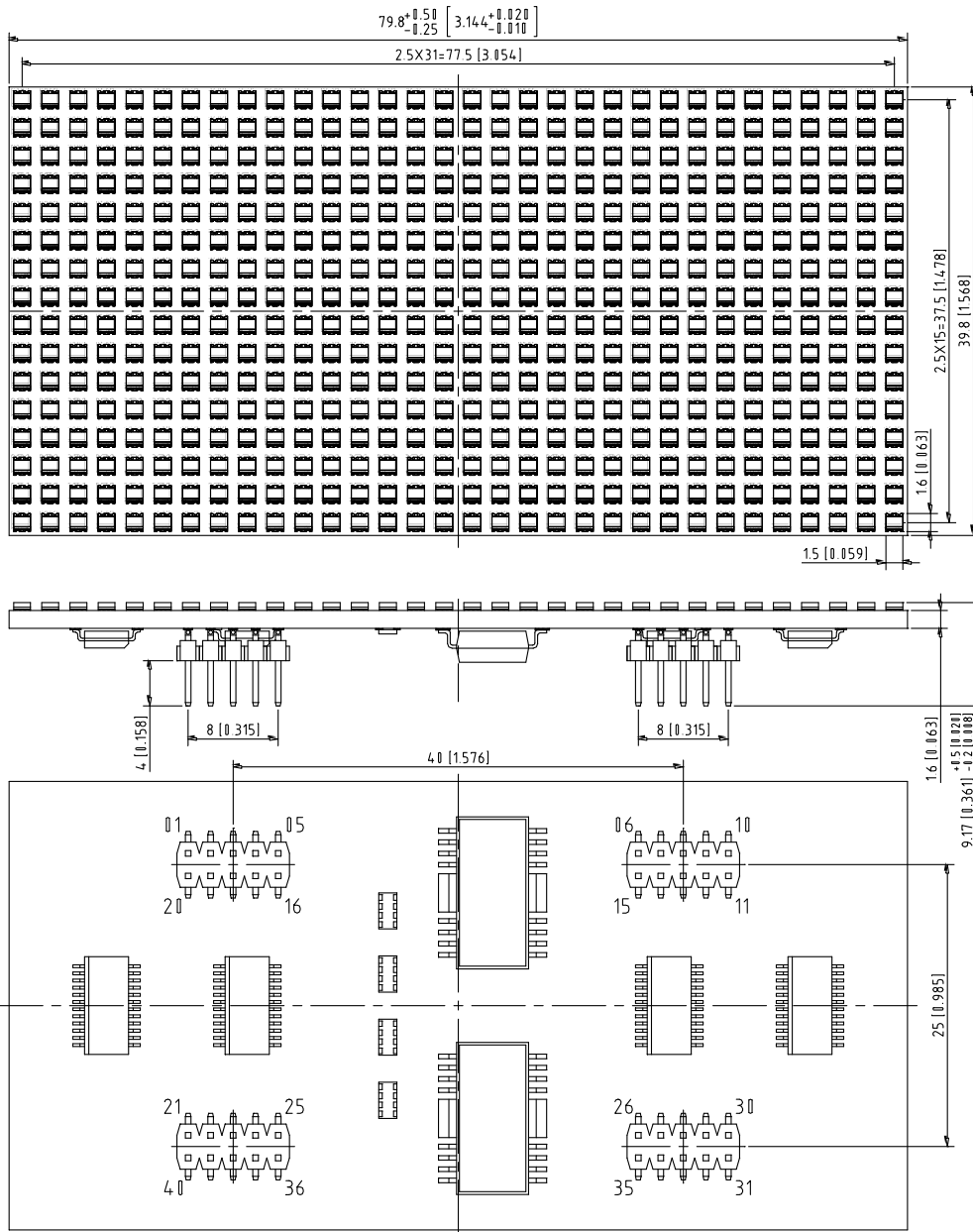
FEATURES

- * 1.52 inch (38.6 mm) MATRIX HEIGHT
- * LOW POWER REQUIREMENT
- * SOLID STATE RELIABILITY
- * 16x32 ARRAY WITH X-Y SELECT
- * MULTICOLOR DISPLAYS ARE APPLICABLE TO THREE BRIGHT COLORS
(GREEN AND RED)
- * 1/16 DUTY DYNAMIC SCAN METHOD
- * CONTROL METHOD: SHIFT REGISTER TYPE
- * COMPATIBLE WITH USASCII AND EBCDIC CODES
- * STACKABLE HORIZONTALLY
- * CATEGORIZED FOR LUMINOUS INTENSITY

DESCRIPTION

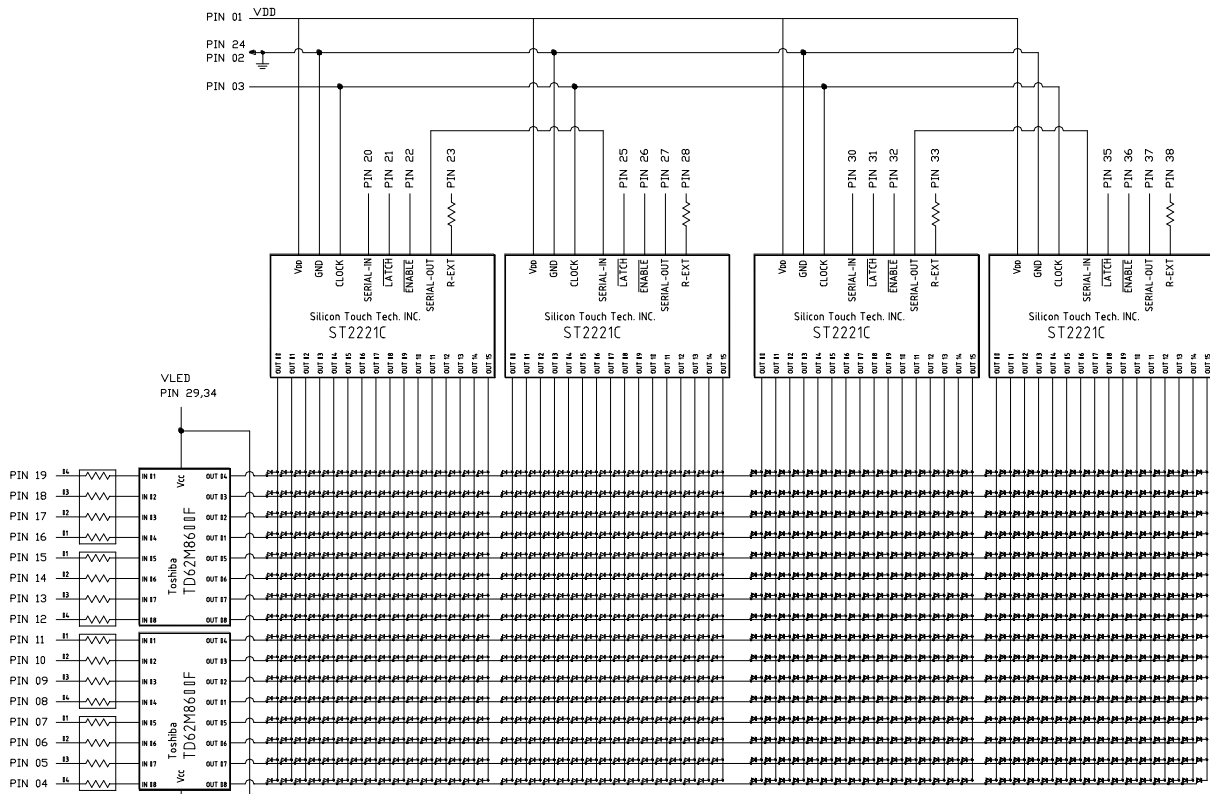
The LTM-0124M-01 is a 1.52 inch (38.6 mm) matrix height 16x32 dot matrix display which is multicolor applicable and built with constant current drivers (shift register control type). This device uses AS-AlInGaP SUPER RED chip LED and AS-AlInGaP GREEN chip LED.

PACKAGE DIMENSIONS



NOTES: All dimensions are in millimeters. Tolerances are ± 0.25 mm (0.01 ") unless otherwise noted.

INTERNAL CIRCUIT DIAGRAM



Note :

1. The sign "⤵" stands for AlInGaP Super Red color chip ($\lambda_d = 631\text{nm}$)
2. VCC= +4.5~5.2V
I_p= 40 mA , 1/16 duty
- The sign "⤴" stands for AlInGaP Green color chip ($\lambda_d = 572\text{nm}$)

PIN CONNECTION

No.	CONNECTION	No.	CONNECTION
1	V _{DD}	21	LATCH(Red Column1~16)
2	GND	22	ENABLE(Red Column1~16)
3	CLOCK	23	R-EXT(Red Column1~16)
4	Anode Row 16, Red & Green	24	GND
5	Anode Row 15, Red & Green	25	LATCH(Red Column17~32)
6	Anode Row 14, Red & Green	26	ENABLE(Red Column17~32)
7	Anode Row 13, Red & Green	27	Red Data Serial Out
8	Anode Row 12, Red & Green	28	R-EXT(Red Column17~32)
9	Anode Row 11, Red & Green	29	V _{LED}
10	Anode Row 10, Red & Green	30	Green Data Serial In
11	Anode Row 9, Red & Green	31	LATCH(Green Column1~16)
12	Anode Row 8, Red & Green	32	ENABLE(Green Column1~16)
13	Anode Row 7, Red & Green	33	R-EXT(Green Column1~16)
14	Anode Row 6, Red & Green	34	V _{LED}
15	Anode Row 5, Red & Green	35	LATCH(Green Column17~32)
16	Anode Row 4, Red & Green	36	ENABLE(Green Column17~32)
17	Anode Row 3, Red & Green	37	Green Data Serial Out
18	Anode Row 2, Red & Green	38	R-EXT(Green Column17~32)
19	Anode Row 1, Red & Green	39	No Connection
20	Red Data Serial In	40	No Connection

ELECTRICAL / OPTICAL CHARACTERISTICS AT Ta=25°C**Red**

PARAMETER	SYMBOL	MIN.	TYP.	MAX.	UNIT	TEST CONDITION
Average Luminous Intensity	I _v	6	10		mcd	I _p =40mA 1/16Duty
Peak Emission Wavelength	λ _p		639		nm	I _F =20mA
Spectral Line Half-Width	Δλ		20		nm	I _F =20mA
Dominant Wavelength	λ _d		631		nm	I _F =20mA
Forward Voltage any Dot	V _F		2.0	2.4	V	I _F =20mA
Reverse Current any Dot	I _R			100	μA	V _R =5V
Luminous Intensity Matching Ratio	I _v -m			2:1		I _p =32mA 1/16Duty

Green

PARAMETER	SYMBOL	MIN.	TYP.	MAX.	UNIT	TEST CONDITION
Average Luminous Intensity	I _v	3.6	6.4		mcd	I _p =32mA 1/16Duty
Peak Emission Wavelength	λ _p		574		nm	I _F =20mA
Spectral Line Half-Width	Δλ		15		nm	I _F =20mA
Dominant Wavelength	λ _d		571		nm	I _F =20mA
Forward Voltage any Dot	V _F		2.0	2.4	V	I _F =20mA
Reverse Current any Dot	I _R			100	μA	V _R =5V
Luminous Intensity Matching Ratio	I _v -m			2:1		I _p =32mA 1/16Duty

Note: Luminous intensity is measured with a light sensor and filter combination that approximates the CIE (Commision Internationale De L'Eclairage) eye-response curve.

ABSOLUTE MAXIMUM RATING FOR SHIFT REGISTER AT Ta=25°C

CHARACTERISTIC	SYMBOL	RATING	UNIT
Supply Voltage	VDD	0~7.0	V
Input Voltage	VIN	-0.4~VDD+0.4	V
Output Current per VOUT	IOUT	120	mA
Output Voltage per VOUT	VCE	-0.5~9.5	V
Clock Frequency	fCK	25	MHz
GND Terminal Current	IGND	1920	mA
Power Dissipation	PD	1.27(T=25°C)	W
		0.61(T=85°C)	
Operating Temperature	Topr	-25°C ~ 45°C	°C
Storage Temperature	Tstg	-25°C ~ 85°C	°C

Solder Temperature 1/16 inch Below Seating Plane for 3 Seconds at 260°C

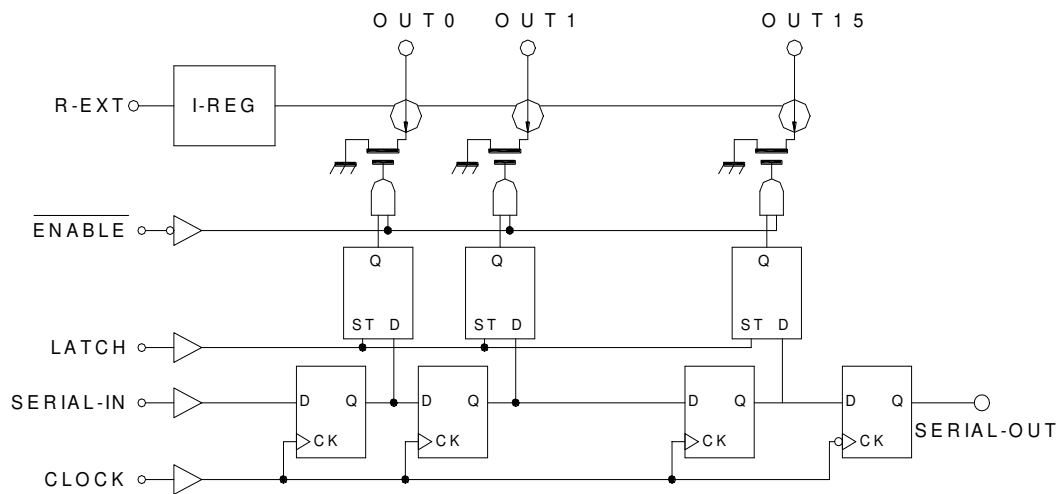
RECOMMENDED OPERATING CONDITION

(T=-40~85°C unless otherwise noted)

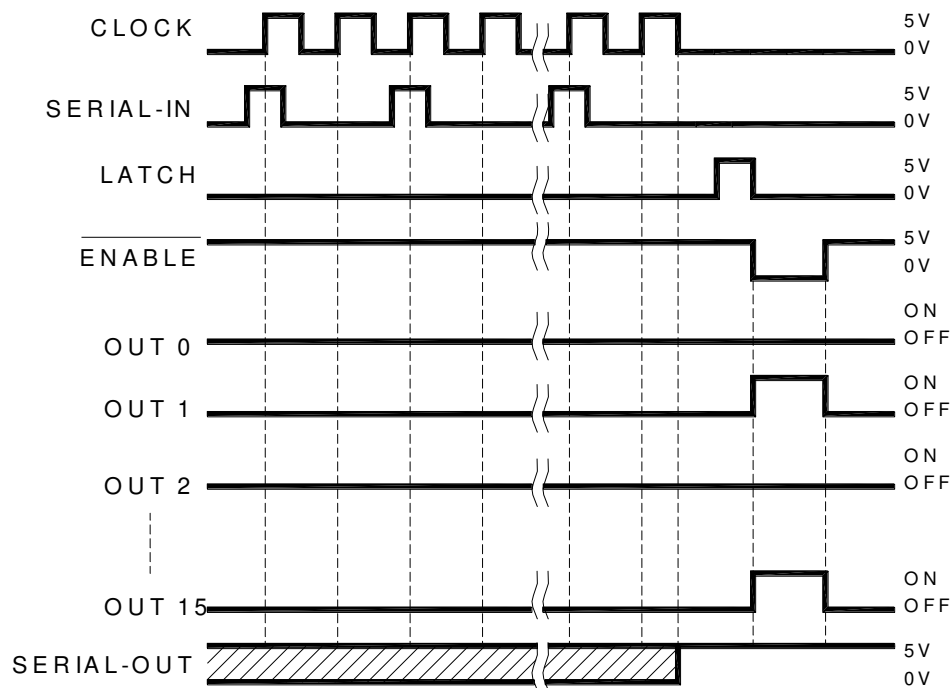
CHARACTERISTIC	SYMBOL	CONDITION	MIN.	TYP.	MAX.	UNIT
LED Voltage	VLED	-	3	3.5	4	V
Supply Voltage	VDD	-	4.5	5.0	5.5	V
Output Voltage	VOUT	-	-	-	9	V
Output Current per	IO	OUTn	5	-	115	mA
	IOH	SERIAL-OUT	-	-	1.0	
	IOL	SERIAL-OUT	-	-	-1.0	
Input Voltage	VIH	-	0.7VDD	-	VDD+0.3	V
	VIL	-	-0.3	-	0.3VDD	
LATCH Pulse Width	tw LAT	VDD=4.5~5.5V	15	-	-	ns
CLOCK Pulse Width	tw CLK		15	-	-	ns
Set-up Time for DATA	tsetup(D)		20	-	-	ns
Hold Time for DATA	thold(D)		20	-	-	ns
Set-up Time for LATCH	tsetup(L)		15	-	-	ns
Clock Frequency	fCLK		Cascade operation	-	-	25
Power Dissipation	PD	T=85°C	-	-	0.61	W

Property of Lite-On Only

BLOCK DIAGRAM



TIMING DIAGRAM



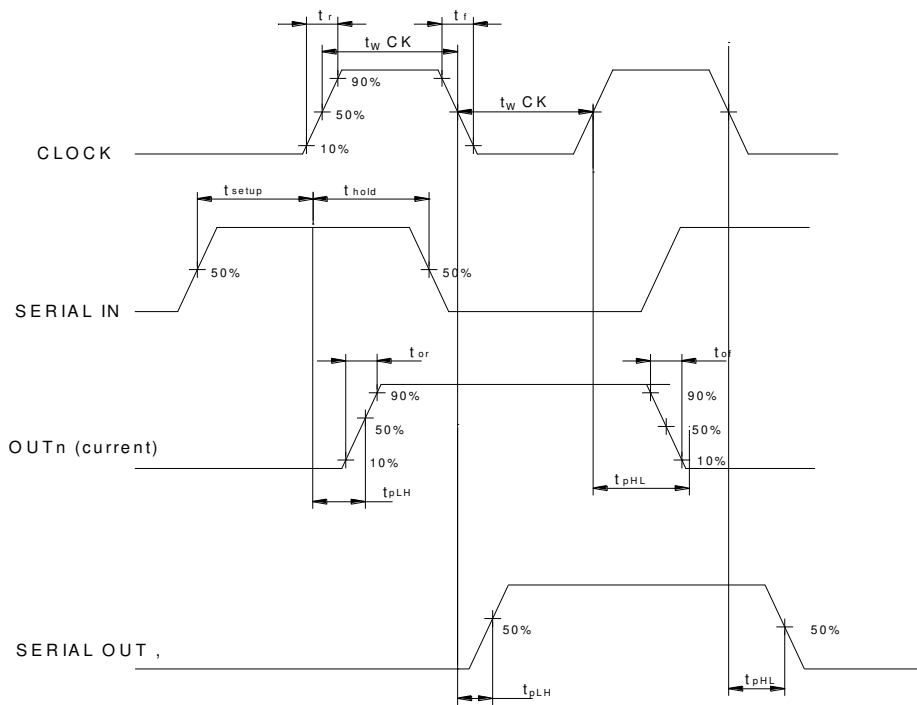
Latches are level sensitive(not edge triggered).

Latch-terminal= H level, latches become transparent; Latch-terminal= L level, hold data.

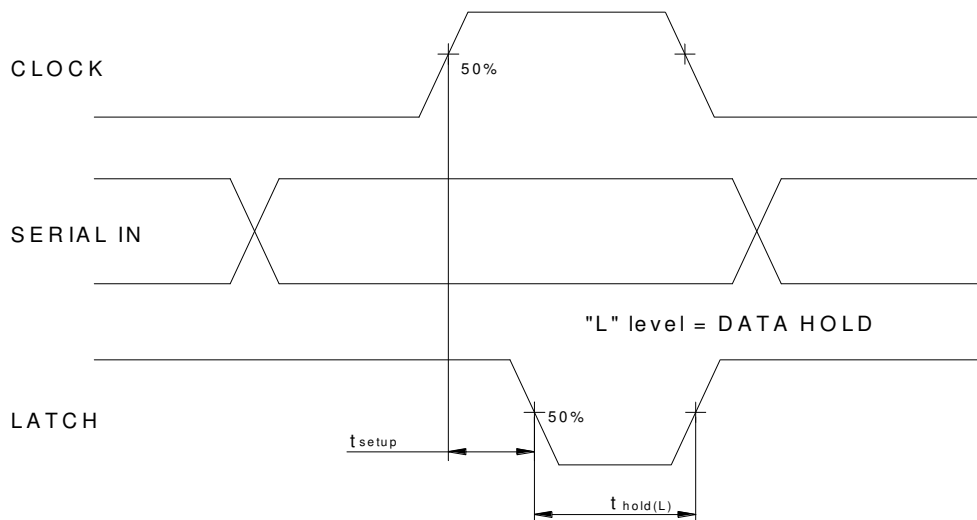
ENABLE-terminal= H level, all outputs(OUT0~15) are off.

SERIAL-OUT changes state on falling edges of clock.

CLOCK – SERIAL , OUT , OUTn



Clock - LATCH



ENABLE - OUTn