



Chipsmall Limited consists of a professional team with an average of over 10 year of expertise in the distribution of electronic components. Based in Hongkong, we have already established firm and mutual-benefit business relationships with customers from,Europe,America and south Asia,supplying obsolete and hard-to-find components to meet their specific needs.

With the principle of “Quality Parts,Customers Priority,Honest Operation,and Considerate Service”,our business mainly focus on the distribution of electronic components. Line cards we deal with include Microchip,ALPS,ROHM,Xilinx,Pulse,ON,Everlight and Freescale. Main products comprise IC,Modules,Potentiometer,IC Socket,Relay,Connector.Our parts cover such applications as commercial,industrial, and automotives areas.

We are looking forward to setting up business relationship with you and hope to provide you with the best service and solution. Let us make a better world for our industry!



Contact us

Tel: +86-755-8981 8866 Fax: +86-755-8427 6832

Email & Skype: info@chipsmall.com Web: www.chipsmall.com

Address: A1208, Overseas Decoration Building, #122 Zhenhua RD., Futian, Shenzhen, China





LED Display

Product Data Sheet

LTS-5501AE-09J

Spec No.: DS30-2010-0171

Effective Date: 10/13/2012

Revision: -

LITE-ON DCC

RELEASE

BNS-OD-FC001/A4

LED DISPLAY**LTS-5501AE-09J****DATA SHEET**

ITEM	DESCRIPTION	ISSUER	DATE
1	New	Lester Chen	2010/06/01
2	Delete Reverse Voltage Per Dice at absolute maximum rating. Add Reverse voltage remark at electrical/ optical characteristics.	Eason Lin	2010/08/05

FEATURES

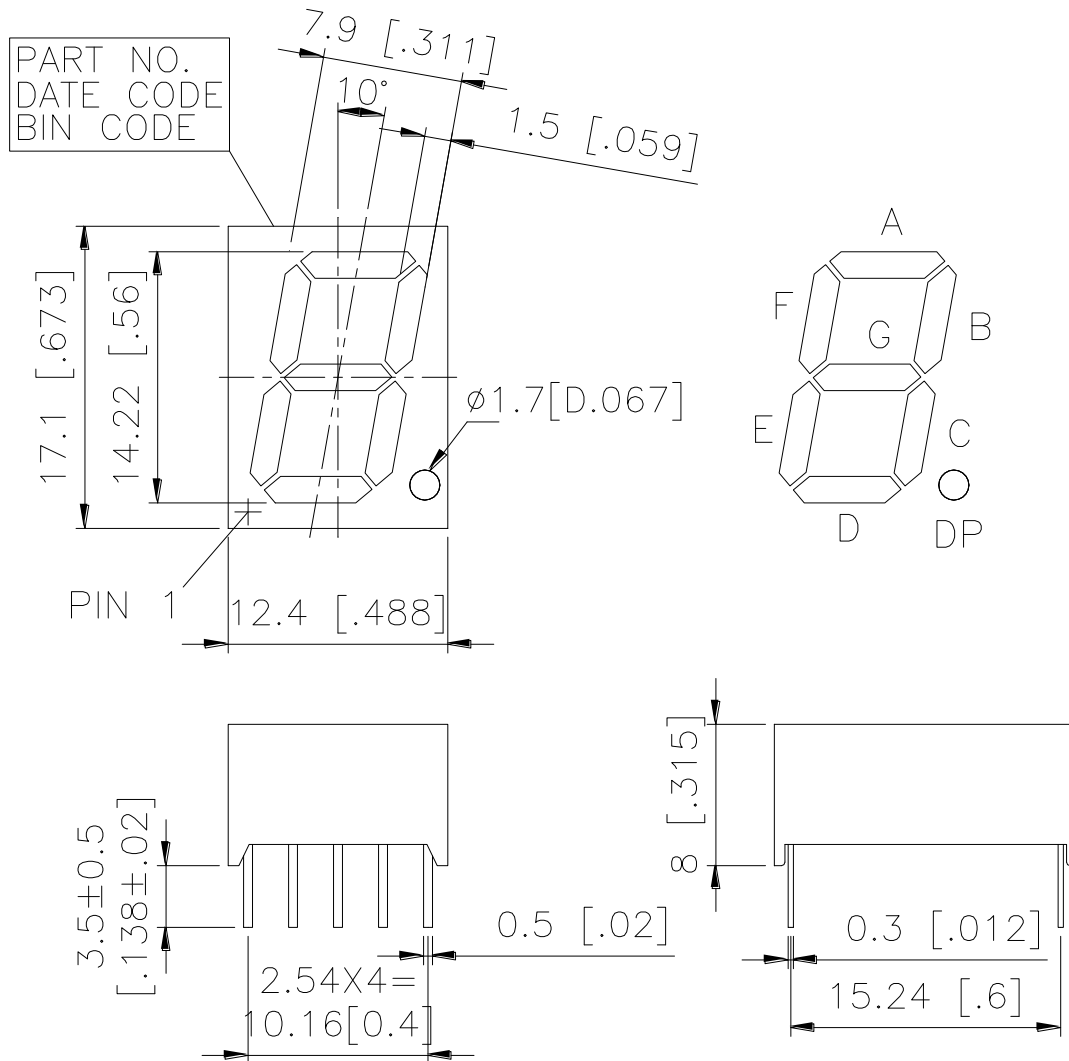
- * 0.56inch (14.22mm) DIGIT HEIGHT
- * CONTINUOUS UNIFORM SEGMENTS
- * LOW POWER REQUIREMENT
- * EXCELLENT CHARACTERS APPEARANCE
- * HIGH BRIGHTNESS AND HIGH CONTRAST
- * WIDE VIEWING ANGLE
- * SOLID STATE RELIABILITY
- * CATEGORIZED FOR LUMINOUS INTENSITY
- * **LEAD-FREE PACKAGE (ACCORDING TO RoHS)**

DESCRIPTION

The LTS-5501AE-09J is a 0.56 inch (14.22 mm) digit height single digit display. This device utilizes red orange LED chips which are made from GaAsP on GaP substrate, and has a gray face and white segments.

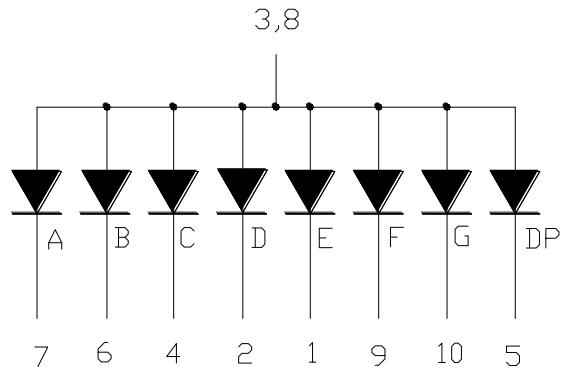
DEVICE

PART NO.	DESCRIPTION
Red Orange	Common Anode Rt. Hand Decimal
LTS-5501AE-09J	

PACKAGE DIMENSIONS


NOTES: 1. All dimensions are in millimeters. Tolerances are ± 0.25 mm (0.01") unless otherwise noted.

2. Pin tip's shift tolerance is ± 0.4 mm

INTERNAL CIRCUIT DIAGRAM

PIN CONNECTION

No	CONNECTION
1	CATHODE E
2	CATHODE D
3	COMMON ANODE
4	CATHODE C
5	CATHODE D.P.
6	CATHODE B
7	CATHODE A
8	COMMON ANODE
9	CATHODE F
10	CATHODE G

ABSOLUTE MAXIMUM RATING

PARAMETER	MAXIMUM RATING	UNIT
Power Dissipation Per Segment	75	mW
Peak Forward Current Per Segment (Frequency 1Khz, 10% duty cycle)	100	mA
Continuous Forward Current Per Segment	25	mA
Derating Linear From 25 ⁰ C Per Segment	0.28	mA/ ⁰ C
Operating Temperature Range	-35 ⁰ C to +105 ⁰ C	
Storage Temperature Range	-35 ⁰ C to +105 ⁰ C	
Soldering Conditions : 1/16 inch below seating plane for 5 seconds at 260 ⁰ C		

ELECTRICAL / OPTICAL CHARACTERISTICS AT Ta=25°C

PARAMETER	SYMBOL	MIN	TYP	MAX	UNIT	TEST CONDITION
Average Luminous Intensity Per Segment	I _v	800	2400		μcd	I _F = 10mA
Peak Emission Wavelength	λ _p		630		nm	I _F = 20mA
Spectral Line Half-Width	Δλ		40		nm	I _F = 20mA
Dominant Wavelength	λ _d		621		nm	I _F = 20mA
Forward Voltage Per Segment	V _F		2.0	2.6	V	I _F = 20mA
Reverse Current Per Segment ⁽²⁾	I _R			100	μA	V _R = 5V
Luminous Intensity Matching Ratio (Similar Light Area)	I _{v-m}			2:1		I _F = 10mA

BIN TABLE

ucd/seg-10mA

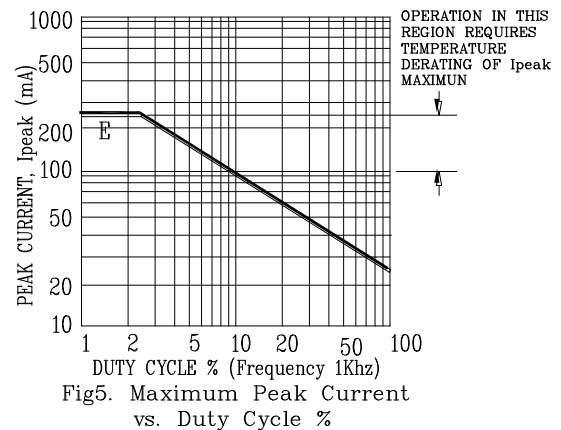
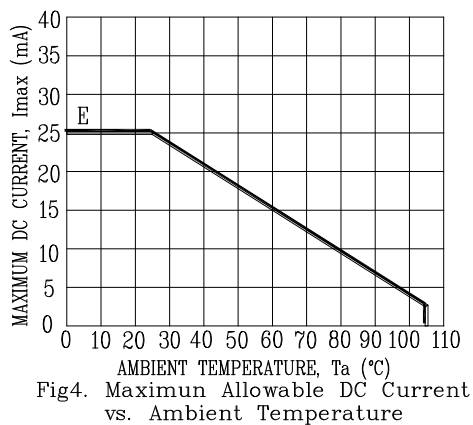
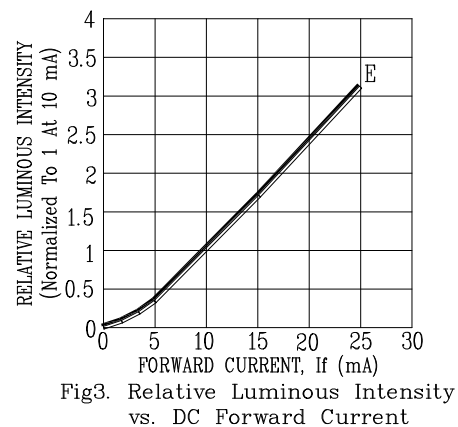
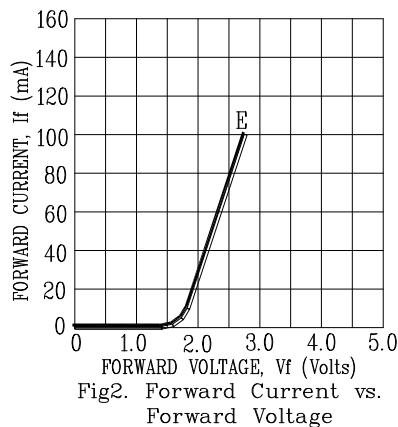
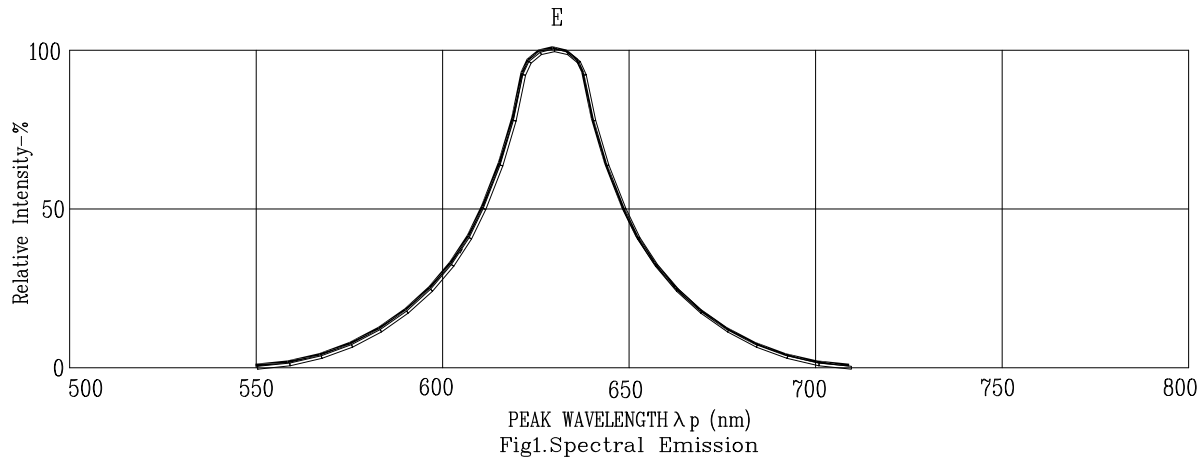
Bin Grade	H	J	K	L	M
Range	801~1300	1301~2100	2101~3400	3401~5400	5401~8600

Note:

1. Luminous Intensity is measured with a light sensor and filter combination that approximates the CIE (Commision Internationale De L'Eclairage) eye-response curve.
2. Reverse voltage is only for IR test. It can not continue to operate at this situation.

TYPICAL ELECTRICAL / OPTICAL CHARACTERISTIC CURVES

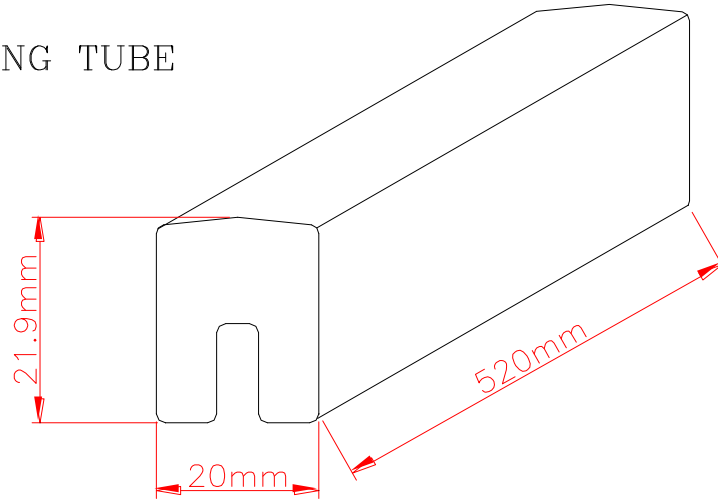
(25°C Ambient Temperature Unless Otherwise Noted)



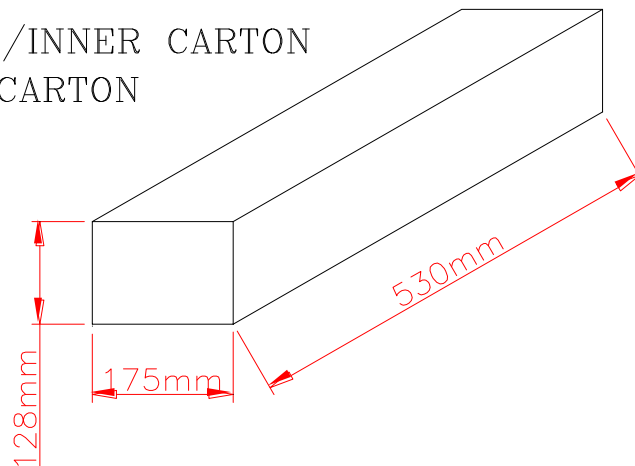
NOTE: E=RED ORANGE

PACKING SPEC.

40 PCS/PACKING TUBE



48 PACKING TUBE/INNER CARTON
1920 PCS/INNER CARTON



4 INNER CARTON/OUTER CARTON
7680 PCS/OUTER CARTON

