



Chipsmall Limited consists of a professional team with an average of over 10 year of expertise in the distribution of electronic components. Based in Hongkong, we have already established firm and mutual-benefit business relationships with customers from,Europe,America and south Asia,supplying obsolete and hard-to-find components to meet their specific needs.

With the principle of "Quality Parts,Customers Priority,Honest Operation,and Considerate Service",our business mainly focus on the distribution of electronic components. Line cards we deal with include Microchip,ALPS,ROHM,Xilinx,Pulse,ON,Everlight and Freescale. Main products comprise IC,Modules,Potentiometer,IC Socket,Relay,Connector.Our parts cover such applications as commercial,industrial, and automotives areas.

We are looking forward to setting up business relationship with you and hope to provide you with the best service and solution. Let us make a better world for our industry!



Contact us

Tel: +86-755-8981 8866 Fax: +86-755-8427 6832

Email & Skype: info@chipsmall.com Web: www.chipsmall.com

Address: A1208, Overseas Decoration Building, #122 Zhenhua RD., Futian, Shenzhen, China

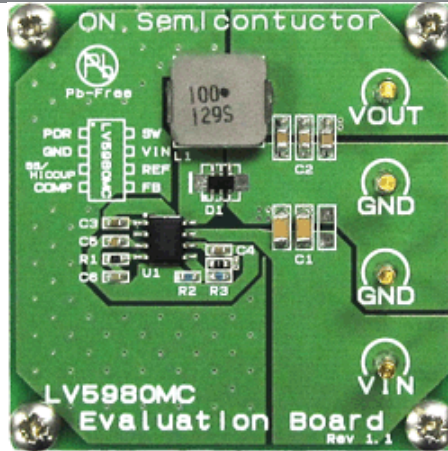




LV5980MCGEVB:1-Channel DC-DC Converter Evaluation Board

Evaluation Board Description

LV5980MC is 1ch DCDC converter with built-in power Pch MOSFET. The recommended operating range is 4.5V to 23V. The maximum current is 3A. The operating current is about 63μA. The operating power consumption is achieved.



Design Support

- » [Technical Documentation](#)
- » [Design Resources](#)
- » [Technical Support](#)
- » [Sales Support](#)

Evaluation Board Information

Evaluation Board	Status	Pb-free	Short Description	Parts Used	Action
LV5980MCGEVB	Active		1-Channel DC-DC Converter Evaluation Board	LV5980MC-AH	

Technical Documents

Type	Document Title	Document ID/ Size	Rev
Eval Board: BOM	LV5980MCGEVB Bill of Materials ROHS Compliant	LV5980MCGEVB_BOM_ROHS.PDF - 42.0 KB	0
Eval Board: Gerber	LV5980MCGEVB Gerber Layout Files (Zip Format)	LV5980MCGEVB_GERBER.ZIP - 216.0 KB	0
Eval Board: Schematic	LV5980MCGEVB Schematic	LV5980MCGEVB_SCHEMATIC.PDF - 618.0 KB	0
Eval Board: Test Procedure	LV5980MCGEVB Test Procedure	LV5980MCGEVB_TEST_PROCEDURE.PDF - 887.0 KB	0

