



Chipsmall Limited consists of a professional team with an average of over 10 year of expertise in the distribution of electronic components. Based in Hongkong, we have already established firm and mutual-benefit business relationships with customers from,Europe,America and south Asia,supplying obsolete and hard-to-find components to meet their specific needs.

With the principle of “Quality Parts,Customers Priority,Honest Operation,and Considerate Service”,our business mainly focus on the distribution of electronic components. Line cards we deal with include Microchip,ALPS,ROHM,Xilinx,Pulse,ON,Everlight and Freescale. Main products comprise IC,Modules,Potentiometer,IC Socket,Relay,Connector.Our parts cover such applications as commercial,industrial, and automotives areas.

We are looking forward to setting up business relationship with you and hope to provide you with the best service and solution. Let us make a better world for our industry!



Contact us

Tel: +86-755-8981 8866 Fax: +86-755-8427 6832

Email & Skype: info@chipsmall.com Web: www.chipsmall.com

Address: A1208, Overseas Decoration Building, #122 Zhenhua RD., Futian, Shenzhen, China



ON Semiconductor®



Enabling Energy Efficient Solutions

Contact Us | Company | Investors | Careers | News | 简体中文 | 日本語 | Русский

Search

Part # / Keyword Cross-Reference » Search Help

Home

Products

Design Support

Applications

Quality

MyON

Design Support

Technical Documentation

Design Resources

Evaluation Boards

Evaluation Board Documents

Design & Development Tools

Sample Kits

Software

Simulation Models

Product Recommendation

Tools

Video

Technical Support

Home > Support > Design Support > Design Resources > Evaluation Boards

Previously Viewed Products

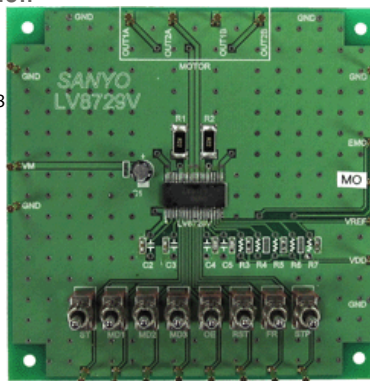
Select Product...

[Clear List](#)

LV8729VGEVB:EVABOARD FOR LV8729V

Evaluation Board Description

The LV8729V is a PWM current-controlled micro step bipolar stepping motor driver. This driver can do eight ways of micro step resolution of 1/128 step from Full step, and can drive simply by the CLK input.



Design Support

[Technical Documentation](#)
[Design Resources](#)
[Technical Support](#)
[Sales Support](#)

Features and Applications

Features

- Single-channel PWM current control stepping motor driver
- BiCDMOS process IC
- Full, Half, Quarter, 1/8, 1/16, 1/32, 1/64, 1/128 step are selectable
- Advance the excitation step with the only step signal input
- Available forward reverse control
- Over current protection circuit
- Thermal shutdown circuit
- Input pull down resistance
- With reset pin and enable pin

Evaluation Board Information

Evaluation Board	Status	Pb-free	Short Description	Parts Used	Action
LV8729VGEVB	Active		EVABOARD FOR LV8729V		<input type="button" value="Buy Now"/> Contact Local Sales Office Inventory

Technical Documents

Type	Document Title	Document ID/ Size	Rev
Eval Board: BOM	LV8729VGEVB Bill of Materials ROHS Compliant	LV8729VGEVB_BOM_ROHS.PDF - 43.0 KB	0
Eval Board: Gerber	LV8729VGEVB Gerber Layout Files (Zip Format)	LV8729VGEVB_GERBER.ZIP - 103.0 KB	0
Eval Board: Schematic	LV8729VGEVB Schematic	LV8729VGEVB_SCHEMATIC.PDF - 87.0 KB	0
Eval Board: Test Procedure	LV8729VGEVB Test Procedure	LV8729VGEVB_TEST_PROCEDURE.PDF - 169.0 KB	0