



Chipsmall Limited consists of a professional team with an average of over 10 year of expertise in the distribution of electronic components. Based in Hongkong, we have already established firm and mutual-benefit business relationships with customers from,Europe,America and south Asia,supplying obsolete and hard-to-find components to meet their specific needs.

With the principle of “Quality Parts,Customers Priority,Honest Operation,and Considerate Service”,our business mainly focus on the distribution of electronic components. Line cards we deal with include Microchip,ALPS,ROHM,Xilinx,Pulse,ON,Everlight and Freescale. Main products comprise IC,Modules,Potentiometer,IC Socket,Relay,Connector.Our parts cover such applications as commercial,industrial, and automotives areas.

We are looking forward to setting up business relationship with you and hope to provide you with the best service and solution. Let us make a better world for our industry!



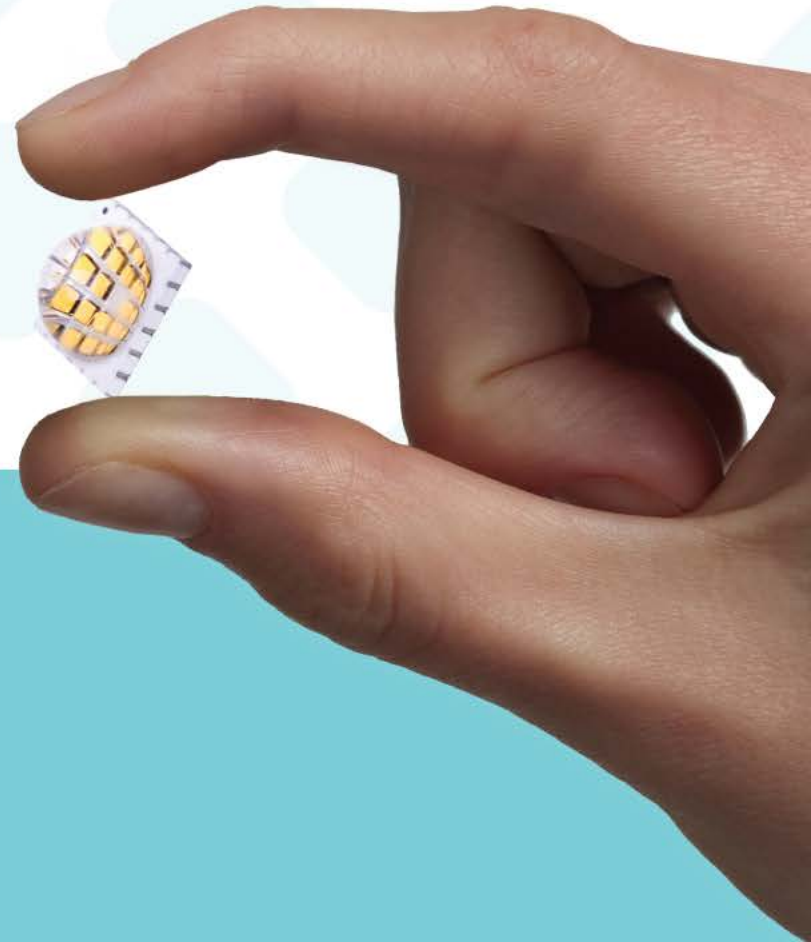
Contact us

Tel: +86-755-8981 8866 Fax: +86-755-8427 6832

Email & Skype: info@chipsmall.com Web: www.chipsmall.com

Address: A1208, Overseas Decoration Building, #122 Zhenhua RD., Futian, Shenzhen, China





Bright Light.
Tiny Package.

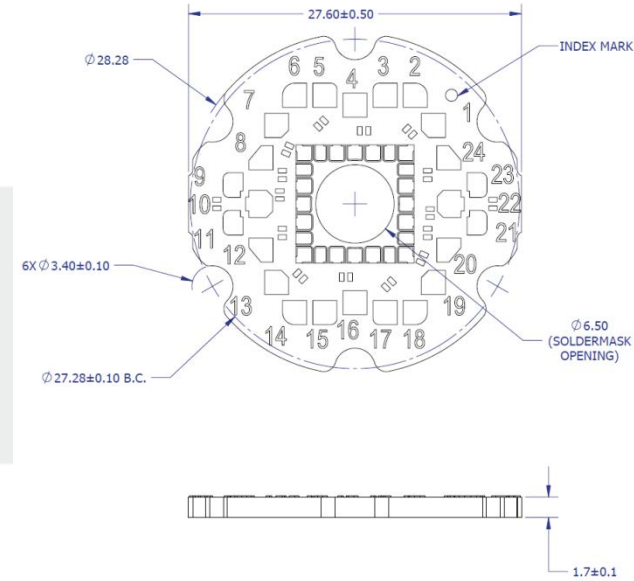
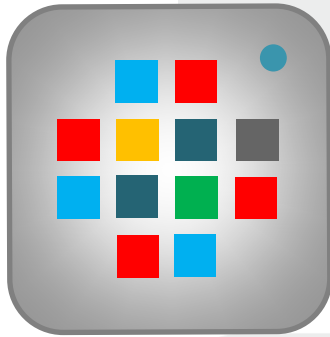
**12-die, 6 color Horticulture Emitter
LZC-03H100-0000**

Pinout Configuration

Horticulture emitter configuration

LZC-03H100-0000

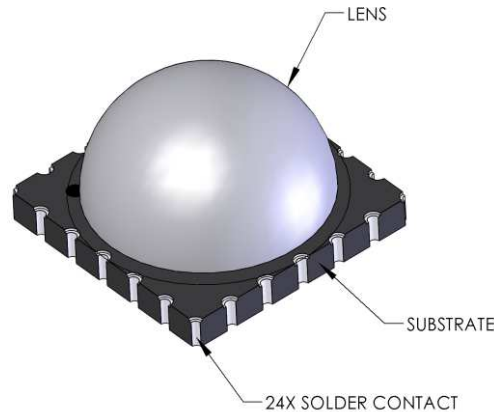
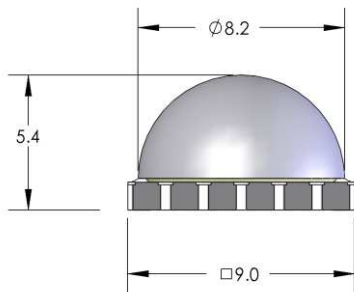
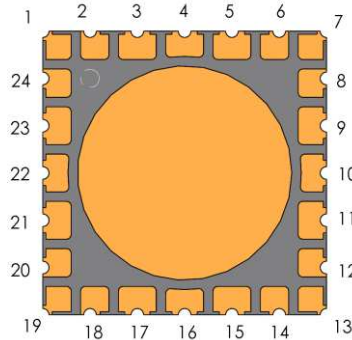
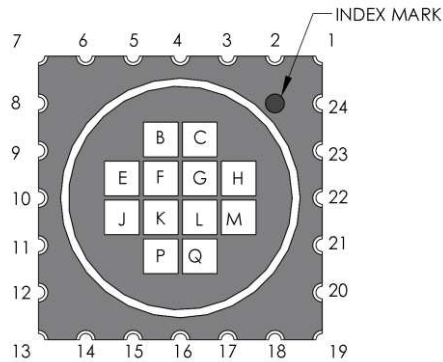
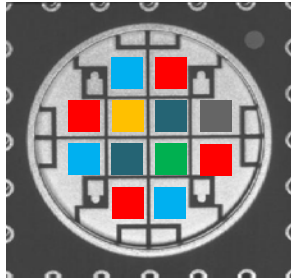
- 6 different channels defined by LinkedIn forum
- Layout based on LZC with frosted lens
- Optional with R&D MCPCB, LZC-R3H100-0000



Option C 2		1-chan	2-chan	2-chan	4-chan	4-chan	4-chan	4-chan	6-chan	6-chan	6-chan	6-chan	6-chan	6-chan
nm	Vf	ch-1	ch-1	ch-2	ch-1	ch-2	ch-3	ch-4	ch-1	ch-2	ch-3	ch-4	ch-5	ch-6
400	3.3	1	1		1				1					
450	3.3	1	1		1					2				
450	3.3	1	1		1					2				
450	3.3	1	1		1					2				
525	4.2	1	1				3				3			
590	2.45	1	1				3					4		
665	2.65	1	1			2							5	
665	2.65	1	1			2							5	
665	2.65	1	1			2							5	
665	2.65	1	1			2							5	
730	2.25	1		2				4						6
730	2.25	1		2				4						6
Channel voltages> at 700mA drive level		34.95	30.45	4.5	13.2	10.6	6.65	4.5	3.3	9.9	4.2	2.45	10.6	4.5

Pin layout (updated 4/22/2016)

LZC-03H100-0000



Pin Out			
Pin	Die	Color	Polarity
1	G	Far Red	+ Anode
2	G	Far Red	- Cathode
3	C	Deep red	+ Anode
4	C	Deep red	- Cathode
5	B	Blue	+ Anode
6	B	Blue	- Cathode
7	F	PC-Amber	- Anode
8	F	PC-Amber	+ Cathode
9	E	Deep red	+ Anode
10	E	Deep red	- Cathode
11	J	Blue	+ Anode
12	J	Blue	- Cathode
13	K	Far Red	+ Anode
14	K	Far Red	- Cathode
15	P	Deep red	+ Anode
16	P	Deep red	- Cathode
17	Q	Blue	+ Anode
18	Q	Blue	- Cathode
19	L	Green	- Cathode
20	L	Green	+ Anode
21	M	Deep red	+ Anode
22	M	Deep red	- Cathode
23	H	Violet	- Cathode
24	H	Violet	+ Anode