



Chipsmall Limited consists of a professional team with an average of over 10 year of expertise in the distribution of electronic components. Based in Hongkong, we have already established firm and mutual-benefit business relationships with customers from,Europe,America and south Asia,supplying obsolete and hard-to-find components to meet their specific needs.

With the principle of “Quality Parts,Customers Priority,Honest Operation,and Considerate Service”,our business mainly focus on the distribution of electronic components. Line cards we deal with include Microchip,ALPS,ROHM,Xilinx,Pulse,ON,Everlight and Freescale. Main products comprise IC,Modules,Potentiometer,IC Socket,Relay,Connector.Our parts cover such applications as commercial,industrial, and automotives areas.

We are looking forward to setting up business relationship with you and hope to provide you with the best service and solution. Let us make a better world for our industry!



Contact us

Tel: +86-755-8981 8866 Fax: +86-755-8427 6832

Email & Skype: info@chipsmall.com Web: www.chipsmall.com

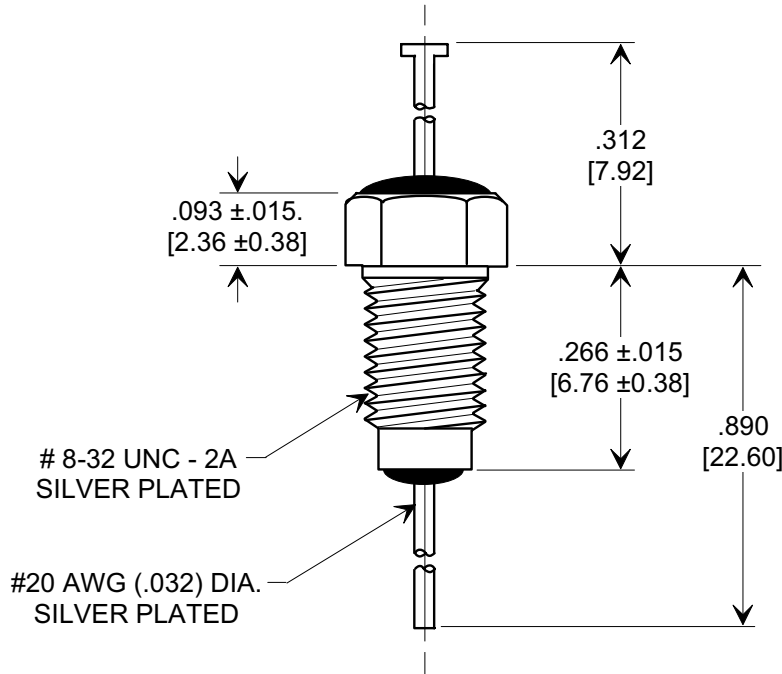
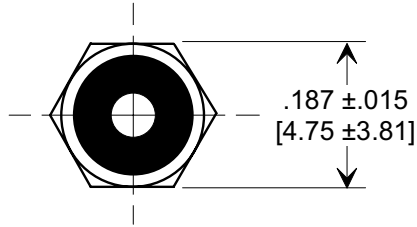
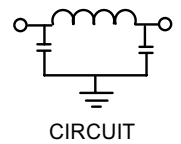
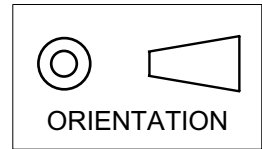
Address: A1208, Overseas Decoration Building, #122 Zhenhua RD., Futian, Shenzhen, China



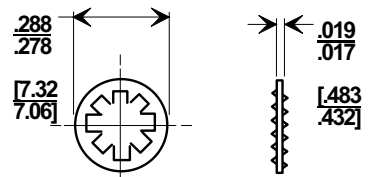
MARKETING SALES DRAWING

DIMENSIONS IN INCHES - DO NOT SCALE THIS DRAWING
DIMENSIONS IN METRIC - []

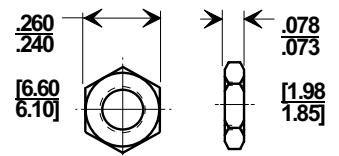
Electrical Testing
 per Tusonix standard
 test plans and Mil-Std-202
 Test Methods.



MOUNTING HARDWARE



LOCK WASHER



HEX NUT

NOTE:

- SUPPLIED WITH SILVER PLATED HEX NUT AND INTERNAL TOOTH LOCK WASHER.
- MOUNTING TORQUE NOT TO EXCEED 3 lb-in.

MIN. CAP (pF)	WORKING VOLTAGE		CURRENT	MINIMUM NO LOAD INSERTION LOSS (dB) @ 25°C PER MIL-STD-220			
	85°C	125°C		50 MHz	100 MHz	1 GHz	10 GHz
2500	200	100	10A	25	45	60	60

X-2015 Rev-0 REVISION RECORD Original Release C.O. 19990713-1-02 NOTE 2 ADDED L.E. 09-12-01 20010912-1-01 SYMBOL ORIENTATION & CIRCUIT ADDED, HEX & NUT DRAWING ADDED NOTE 2 REV'D 3 lbs-in. WAS 5 lbs-in L.E. 09-13-01 20010913-4-01	0	--TOLERANCES-- Unless Otherwise Specified DECIMAL ± .031 ANGLES ±	Title MIL-15733/28-0001 BUSHING STYLE EMI FILTER	
	NOTE 2 ADDED L.E. 09-12-01		Drawn S.M. 07-15-99 Scale 4 X	
	20010912-1-01	Approved E.F. 07-15-99	A	4201-501
	20010913-4-01	Approved E.F. 07-15-99		

TUSONIX
 TUCSON, ARIZONA