



Chipsmall Limited consists of a professional team with an average of over 10 year of expertise in the distribution of electronic components. Based in Hongkong, we have already established firm and mutual-benefit business relationships with customers from,Europe,America and south Asia,supplying obsolete and hard-to-find components to meet their specific needs.

With the principle of “Quality Parts,Customers Priority,Honest Operation,and Considerate Service”,our business mainly focus on the distribution of electronic components. Line cards we deal with include Microchip,ALPS,ROHM,Xilinx,Pulse,ON,Everlight and Freescale. Main products comprise IC,Modules,Potentiometer,IC Socket,Relay,Connector.Our parts cover such applications as commercial,industrial, and automotives areas.

We are looking forward to setting up business relationship with you and hope to provide you with the best service and solution. Let us make a better world for our industry!



## Contact us

Tel: +86-755-8981 8866 Fax: +86-755-8427 6832

Email & Skype: info@chipsmall.com Web: www.chipsmall.com

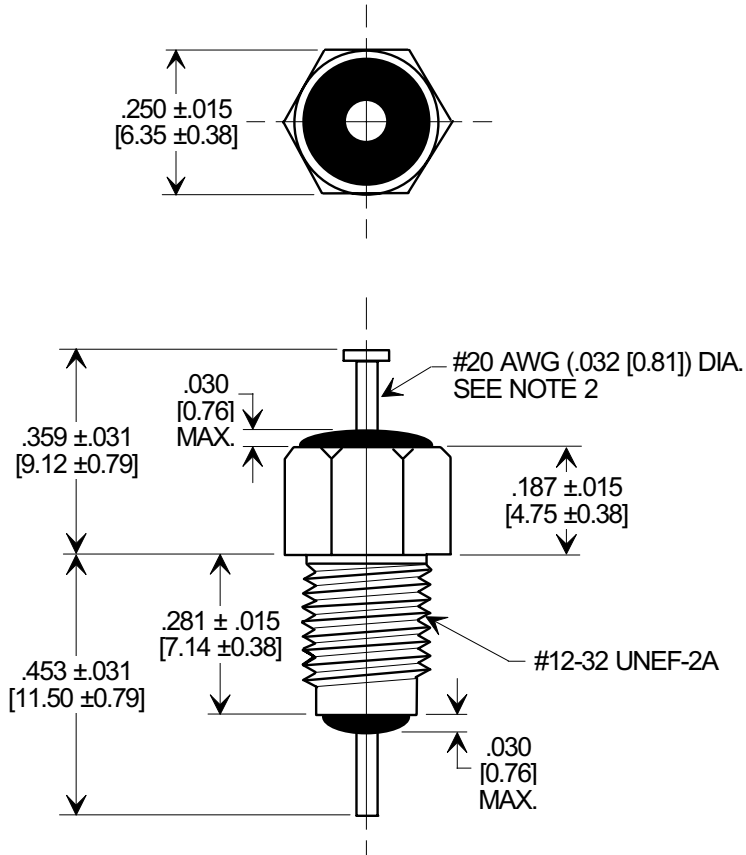
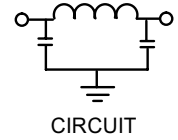
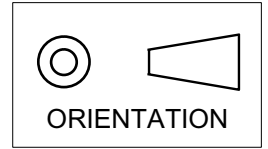
Address: A1208, Overseas Decoration Building, #122 Zhenhua RD., Futian, Shenzhen, China



# MARKETING SALES DRAWING

DIMENSIONS IN INCHES - DO NOT SCALE THIS DRAWING  
 DIMENSIONS IN METRIC - [ ]

Electrical Testing  
 per Tusonix standard  
 test plans and Mil-Std-202  
 Test Methods.



**NOTES:**

- SUPPLIED WITH SILVER PLATED HEX NUT AND LOCKWASHER.
- 4202-501 SUPPLIED WITH TURRET HEAD OPTION, 4202-503 SUPPLIED WITHOUT TURRET HEAD.

MIN. CAP. (pF)	WORKING VOLTAGE (VVdc)		CURRENT (Idc)	DWV (VDC)	I.R. MIN. @ 100 VDC	MINIMUM NO LOAD INSERTION LOSS (dB) AT 25°C PER MIL-STD -220			
	85°C	125°C				10 MHz	100 MHz	1 GHz	10 GHz
1500		200/140 AC	10 AC	500	10 G Ω	-----	45	70	70

X-2015 Rev-0 REVISION RECORD Original Release C.O. 20020607-1-01	0	<b>--TOLERANCES--</b> Unless Otherwise Specified  DECIMAL ± ANGLES ±  <b>TUSONIX</b> TUCSON, ARIZONA	Title <b>MIL-15733/61-0002 BUSHING STYLE EMI FILTER</b>			
	Drawn L.E. 06-07-02		Scale 3 X			
	Approved T.C. 06-07-02		<b>A</b>	<b>4202-501</b>		