



Chipsmall Limited consists of a professional team with an average of over 10 year of expertise in the distribution of electronic components. Based in Hongkong, we have already established firm and mutual-benefit business relationships with customers from,Europe,America and south Asia,supplying obsolete and hard-to-find components to meet their specific needs.

With the principle of “Quality Parts,Customers Priority,Honest Operation,and Considerate Service”,our business mainly focus on the distribution of electronic components. Line cards we deal with include Microchip,ALPS,ROHM,Xilinx,Pulse,ON,Everlight and Freescale. Main products comprise IC,Modules,Potentiometer,IC Socket,Relay,Connector.Our parts cover such applications as commercial,industrial, and automotives areas.

We are looking forward to setting up business relationship with you and hope to provide you with the best service and solution. Let us make a better world for our industry!



## Contact us

Tel: +86-755-8981 8866 Fax: +86-755-8427 6832

Email & Skype: info@chipsmall.com Web: www.chipsmall.com

Address: A1208, Overseas Decoration Building, #122 Zhenhua RD., Futian, Shenzhen, China



# Customer Information Sheet

DRAWING No.: M20-11600XX

SHEET 2 OF 2

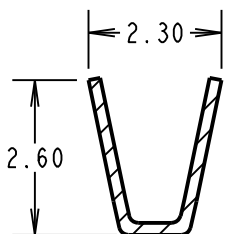
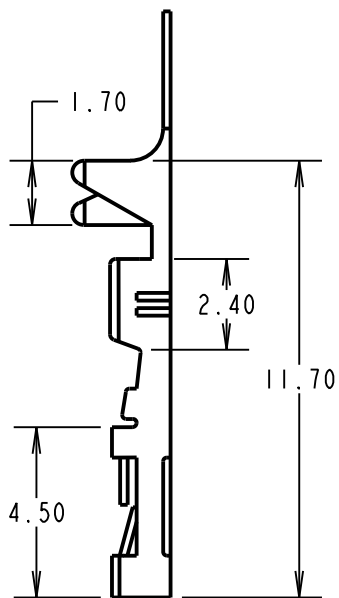
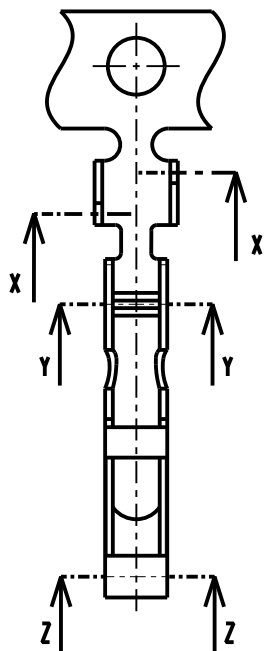
IF IN DOUBT - ASK

©

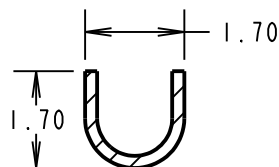
NOT TO SCALE

THIRD ANGLE PROJECTION

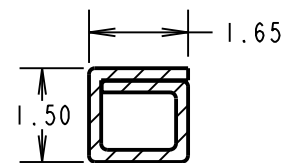
ALL DIMENSIONS IN mm



SECTION X-X

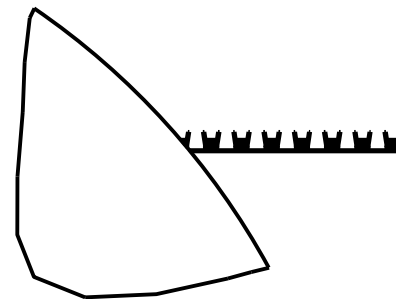


SECTION Y-Y

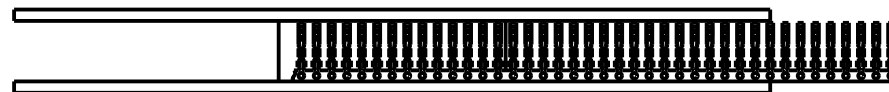


SECTION Z-Z

ORDER CODE:  
**M20-11600XX**  
 FINISH: \_\_\_\_\_  
 42 = GOLD + 100% TIN  
 46 = 100% TIN OVER NICKEL



COMPONENTS REELED AS SHOWN



**NOTES:**

- FOR COMPLETE SPECIFICATION, SEE COMPONENT SPECIFICATION COO1XX (LATEST ISSUE).
- TO BE USED WITH CRIMP MOULDINGS M20-106XX00 AND M20-107XX00. SEE MOULDING DRAWING FOR COMPONENT SPECIFICATION.
- PRODUCT SUPPLIED ON REELS OF 10K.
- STRIP WIRE BY 3.0 - 4.0mm.
- DIAMETER OF WIRE INSULATION =  $\varnothing$  1.60-0.90mm.
- ACCEPTS WIRE RANGE 22-30 AWG.
- PITCH BETWEEN CRIMPS ON REEL 7.0mm.
- TO BE USED WITH HAND TOOL Z20-320, SEE INSTRUCTION SHEET IS-15 FOR DETAILS.
- RECOMMENDED CONDUCTOR CRIMP HEIGHTS:  
 FOR 26 - 30 AWG = 0.69 - 0.75mm  
 FOR 22 - 24 AWG = 0.83 - 0.89mm

**SPECIFICATIONS:**

MATERIAL = BRASS  
 FINISH:  
 42 = GOLD + 100% TIN  
 46 = 100% TIN OVER NICKEL  
 MECHANICAL:  
 WITHDRAWAL FORCE = 1.5-0.8N

|                |      |            |        |
|----------------|------|------------|--------|
| SB             | 13   | 14.06.12   | 11756  |
| NAME           | ISS. | DATE       | C/NOTE |
| APPROVED:      |      | S.BENNETT  |        |
| CHECKED:       |      | M.PLESTED  |        |
| DRAWN:         |      | W.J.BOURNE |        |
| CUSTOMER REF.: |      |            |        |
| ASSEMBLY DRG:  |      |            |        |

**HARWIN**

www.harwin.com  
 technical@harwin.com

THIS DRAWING AND ANY INFORMATION OR DESCRIPTIVE MATTER SET OUT HEREON ARE CONFIDENTIAL AND COPYRIGHT PROPERTY OF THE HARWIN GROUP AND MUST NOT BE DISCLOSED, LOANED, COPIED OR USED FOR MANUFACTURING, TENDERING OR FOR ANY OTHER PURPOSE WITHOUT THEIR WRITTEN PERMISSION.

**TOLERANCES**  
 X. =  $\pm$ 1mm  
 X.X =  $\pm$ 0.25mm  
 X.XX =  $\pm$ 0.10mm  
 X.XXX =  $\pm$ 0.01mm  
 ANGLES =  $\pm$ 5°  
 UNLESS STATED

**MATERIAL:**

SEE ABOVE

**FINISH:**

SEE ABOVE

**S/AREA:**

mm<sup>2</sup>

**TITLE:**

2.54mm FEMALE CRIMP TERMINAL (REELED)

**DRAWING NUMBER:**

**M20-11600XX**

SHT

2 OF 2