



Chipsmall Limited consists of a professional team with an average of over 10 year of expertise in the distribution of electronic components. Based in Hongkong, we have already established firm and mutual-benefit business relationships with customers from,Europe,America and south Asia,supplying obsolete and hard-to-find components to meet their specific needs.

With the principle of “Quality Parts,Customers Priority,Honest Operation,and Considerate Service”,our business mainly focus on the distribution of electronic components. Line cards we deal with include Microchip,ALPS,ROHM,Xilinx,Pulse,ON,Everlight and Freescale. Main products comprise IC,Modules,Potentiometer,IC Socket,Relay,Connector.Our parts cover such applications as commercial,industrial, and automotives areas.

We are looking forward to setting up business relationship with you and hope to provide you with the best service and solution. Let us make a better world for our industry!



Contact us

Tel: +86-755-8981 8866 Fax: +86-755-8427 6832

Email & Skype: info@chipsmall.com Web: www.chipsmall.com

Address: A1208, Overseas Decoration Building, #122 Zhenhua RD., Futian, Shenzhen, China



M Series
**Dual Seal
Waterproof Toggle**



IP67 Rated

General Specifications

Electrical Capacity (Resistive Load)

Power Level (silver): 6A @ 125V AC & 3A @ 250V AC

4A @ 30V DC for On-None-On; 3A @ 30V DC for all other circuits

Logic Level (gold): 0.4VA maximum @ 28V AC/DC maximum (Applicable Range 0.1mA ~ 0.1A @ 20mV ~ 28V)

Other Ratings

Contact Resistance: 10 milliohms maximum for silver; 20 milliohms maximum for gold

Insulation Resistance: 1,000 megohms minimum @ 500V DC

Dielectric Strength: 1,000V AC minimum between contacts for 1 minute minimum;
1,500V AC minimum between contacts and case for 1 minute minimum

Mechanical Life: 50,000 operations minimum

Electrical Life: 50,000 operations minimum for silver at 3A @ 250V AC; 25,000 operations minimum for silver at 6A @ 125V AC; 50,000 operations minimum for gold

Angle of Throw: 25°

Environmental Data

Operating Temp Range: -30°C through +85°C (-22°F through +185°F)

Sealing: Waterproofing, achieved with boot at base of lever plus o-rings inside and outside of bushing, meets IP67 of IEC60529 Standards (dust tight and protection against effects of temporary immersion). See further explanation on last page.

Processing

Soldering: Manual Soldering for Silver: ON-NONE-ON: See Profile B in Supplement section.

ON-OFF-ON and (ON)-OFF-(ON): See Profile A in Supplement section.

Manual Soldering for Gold, all circuits: See Profile A in Supplement section.

Note: Lever must be in OFF (center) position while soldering.

Distinctive Characteristics

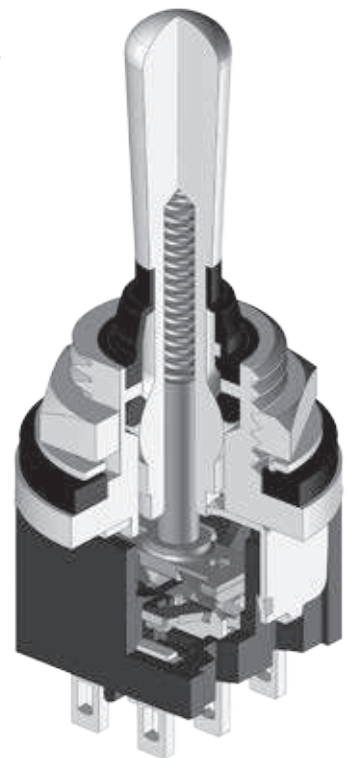
Inner o-ring and external rubber washer seal the switch to achieve IP67 of IEC60529 Standards (dust tight and water protected for temporary immersion).

Waterproof boot at base of toggle further ensures protection against wet environments.

Actuation provides smooth, sturdy tactile feel.

Polished, chrome-plated actuator paired with the waterproof boot not only delivers in terms of sleek design, but also functionality and reliability.

Superb quality and construction design prohibit entry of harmful particles that may otherwise compromise lever operation.



TYPICAL SWITCH ORDERING EXAMPLE

M20

1

2

WB

G

01

Poles

1	SPDT
2	DPDT

Circuits

	ON	NONE	ON
2	ON	NONE	ON
3	ON	OFF	ON
8	(ON)	OFF	(ON)

() = Momentary

Toggle with Large Bushing

WB

.787" (20.0mm) Bat with Large .472" (12.0mm) Threaded Bushing with D Flat

Contact Material & Ratings

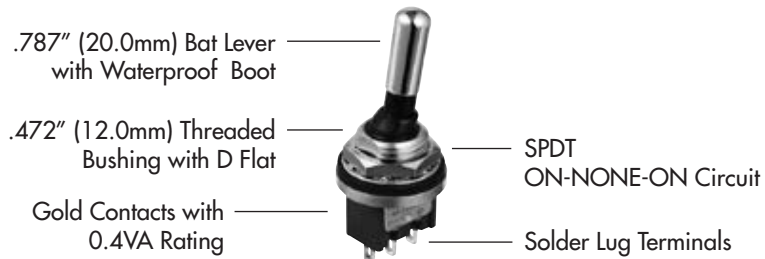
W	Silver; Rated 6A @ 125V AC & 3A @ 250V AC
G	Gold; Rated 0.4VA max @ 28V AC/DC max

Terminals

01	Solder Lug
-----------	------------

DESCRIPTION FOR TYPICAL ORDERING EXAMPLE

M2012WBG01

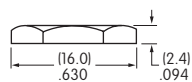
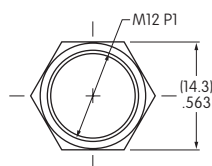


POLES & CIRCUITS

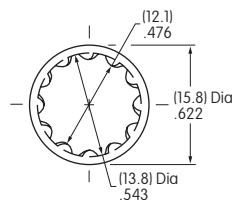
Pole	Model	Toggle Position () = Momentary			Connected Terminals			Throw & Schematics
		Up	Center	Down	Up	Center	Down	
SP	M2012 M2013 M2018	ON ON (ON)	NONE OFF OFF	ON ON (ON)	2-3 Flat	OPEN	2-1	SPDT
DP	M2022 M2023 M2028	ON ON (ON)	NONE OFF OFF	ON ON (ON)	2-3 5-6 Flat	OPEN	2-1 5-4	DPDT

STANDARD HARDWARE

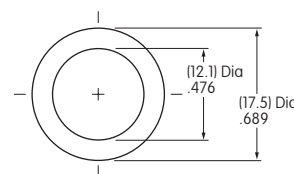
AT503M Hex Face Nut
Brass/Chrome



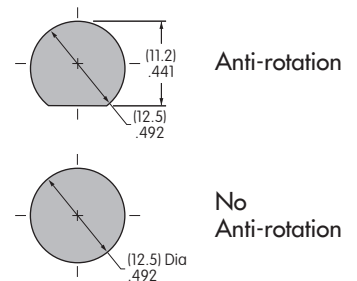
AT508 Lockwasher
Steel with Zinc/Chromate



AT401P O-ring
Nitrile Butadiene Rubber



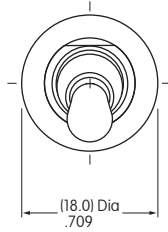
PANEL CUTOUT



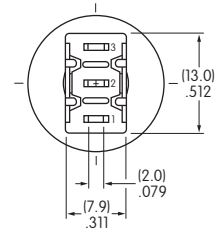
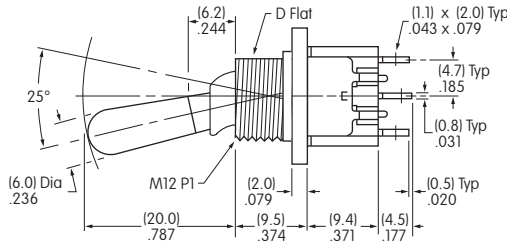
Maximum Effective Panel Thickness
.138" (3.5mm)

TYPICAL SWITCH DIMENSIONS

Solder Lug

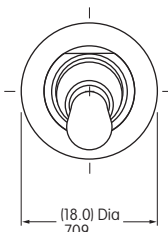


Single Pole

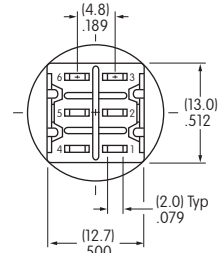
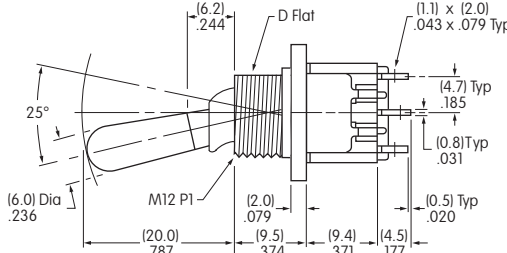


M2012WBG01

Solder Lug



Double Pole



M2022WBG01

APPLICATION CONSIDERATIONS

The Dual Seal Waterproof M Toggle is designed as a panel seal switch, and not to be used under water.

Material Properties

The material for the waterproof boot is silicone rubber. While silicone rubber has excellent heat, cold and weather resistant properties, it has less durability and oil resistance.

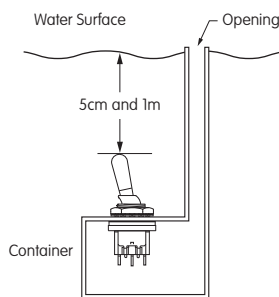
The o-rings are made of nitrile butadiene rubber, which excels in durability and oil and chemical resistance. Its performance is less durable with lower weather and ozone resistant characteristics.

Evaluate the products in regard to your application and intended environment with these properties in mind.

Waterproof Test Conditions

Waterproofing is measured by submersing the switch 5 centimeters from the water surface (see illustration), and opening and closing 50 times at a frequency of 50 – 60 times per minute. The switch is then submersed 1 meter from the surface and left in this position for 30 minutes.

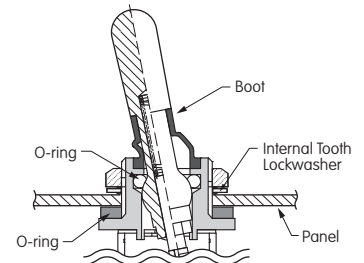
Repeat opening and closing



same as previous test. The resulting insulation resistance and voltage capacity are both within the rated values, and water has not entered inside the switch or installation panel.

Panel Installation

For panel installation, the internal tooth lockwasher is installed above the panel. The external o-ring mounts below the panel.



Applications

- Construction Equipment
- Hospitality and Restaurant
- Transportation
- Medical Equipment
- Machine Tooling
- Marine Equipment *

* Salt spray tested as per Mil-STD-810G section 509.5.

Effective Date March 2016

NKK

SWITCHES

7850 East Gelding Drive • Scottsdale, AZ 85260 • Telephone 480.991.0942 • Fax 480.998.1435

<http://www.nkkswitches.com> • 1.877.2BUYNKK (228.9655)