



Chipsmall Limited consists of a professional team with an average of over 10 year of expertise in the distribution of electronic components. Based in Hongkong, we have already established firm and mutual-benefit business relationships with customers from,Europe,America and south Asia,supplying obsolete and hard-to-find components to meet their specific needs.

With the principle of “Quality Parts,Customers Priority,Honest Operation,and Considerate Service”,our business mainly focus on the distribution of electronic components. Line cards we deal with include Microchip,ALPS,ROHM,Xilinx,Pulse,ON,Everlight and Freescale. Main products comprise IC,Modules,Potentiometer,IC Socket,Relay,Connector.Our parts cover such applications as commercial,industrial, and automotives areas.

We are looking forward to setting up business relationship with you and hope to provide you with the best service and solution. Let us make a better world for our industry!



## Contact us

Tel: +86-755-8981 8866 Fax: +86-755-8427 6832

Email & Skype: info@chipsmall.com Web: www.chipsmall.com

Address: A1208, Overseas Decoration Building, #122 Zhenhua RD., Futian, Shenzhen, China





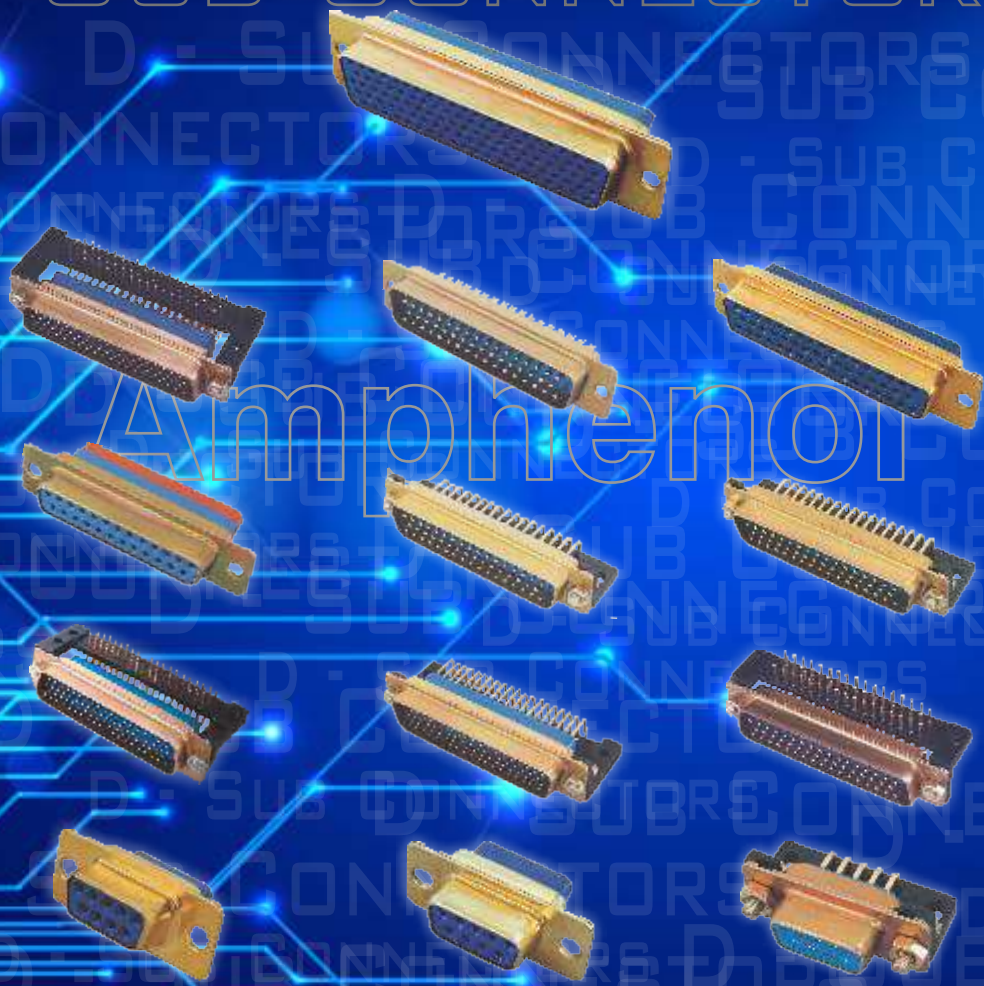
# Amphenol

## D-Sub Connectors

D-Sub-01 Rev. 02 / 17

# Amphenol

## D - SUB CONNECTORS



# Amphenol

Amphenol



# Introduction

Amphenol M2000 Series D Sub Connectors are MIL Qualified & listed in QPL & meets the requirement of MIL-DTL-24308.

M2000 Series D Sub Connectors are subminiature rack & panel type with polarized shell & having pin/socket machined contacts which provide high reliability & density for the connectors. They are used in variety of applications due to it's versatile design where weight & dimensions are constraint factor.

Applications:

- Military
- Aerospace
- Industrial
- Information System
- Communication System

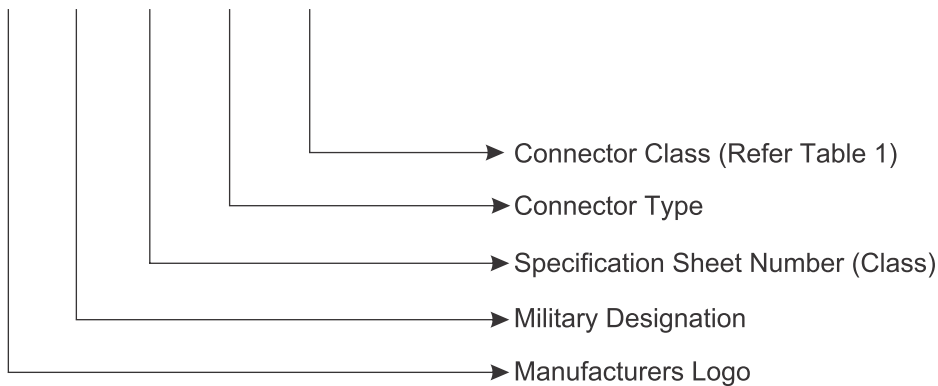
Content	Page
Introduction -----	1
Technical Specification -----	2
Ordering Information -----	2
QPL Approved Part List -----	3-11
Receptacle Plug Assembly Exploded View -----	11
Insert Arrangement For Standard D Sub Connector -----	12
PCB Layout For Standard D Sub Connector -----	13
PCB Layout For High Density D Sub Connector -----	14
Receptacle & Plug Connector -----	15-16
Contact Information for D Sub -----	17-18
D Sub Tooling -----	19-20
<b>Special Products</b>	
Solder Type Standard D Sub Connector (Non Environmental) -----	22
Standard D Sub Grommet Type Connector -----	23
Straight PC Tail D Sub Connector -----	24
Standard D Sub Right Angle PC Tail Connector -----	25
Standard D Sub Right Angle PC Tail Contact with Extra Length Connector ---	26-34
High Density D Sub Right Angle PC Tail Connector -----	35-38
Dust Cover -----	39

## QPL-Crimp Version

Characteristics		Standard	High Density
Material	Shell	Steel / Brass	Steel / Brass
	Insulator	Thermoset/Thermoplast	Thermoset/Thermoplast
	Contact	Copper Alloy	Copper Alloy
Finish	Shell	Cadmium, Nickel, Gold	Cadmium, Nickel, Gold
	Contact	Gold Over Nickel	Gold Over Nickel
Electrical	Contact Rating	7.5A Max	7.5A Max
	Test Voltage-Max	1000 Vrms	1000 Vrms
	Insulation Resistance	≥ 5000 m Ohm	≥ 5000 m Ohm
	Contact Resistance	7.3m Ohm	7.3m Ohm
Mechanical	Insertion/Removal Force	5N Max	5N Max
	Durability	500 Cycles	500 Cycles
	Wire Gauge	AWG 20 - 28	AWG 22 - 28
Environmental	Temperature	- 55 Deg C to + 125 Deg C	- 55° C to + 125° C
	Salt Spray	48 Hrs	48 Hrs
	Damp Heat	10 Days	10 Days

## Ordering Information

A M 24308 / 2 - XXX



### Connector Type

2: Receptacle Connector with Polarized Shell & Socket Crimp contact.

4: Plug Connector with Polarized Shell & Pin Crimp Contact.

6: Receptacle Connector with Polarized Shell with Socket Crimp Contact (Non-Magnetic)

8: Plug Connector with Polarized shell & Pin Crimp Contact (Non-Magnetic)

Sr. No.	Military Designation	Manufacturers Designation	Type	Position	Crimp Contact	I R Tool	Shell	Finish
1	M24308/2-1F	M2000/2-1F	Standard	9	Socket	N	Steel	Cadmium YP
2	M24308/2-2F	M2000/2-2F	Standard	15	Socket	N	Steel	Cadmium YP
3	M24308/2-3F	M2000/2-3F	Standard	25	Socket	N	Steel	Cadmium YP
4	M24308/2-4F	M2000/2-4F	Standard	37	Socket	N	Steel	Cadmium YP
*5	M24308/2-5F	M2000/2-5F	Standard	50	Socket	N	Steel	Cadmium YP
6	M24308/2-6F	M2000/2-6F	Standard	9	Socket	Y	Steel	Cadmium YP
*7	M24308/2-7F	M2000/2-7F	Standard	15	Socket	Y	Steel	Cadmium YP
*8	M24308/2-8F	M2000/2-8F	Standard	25	Socket	Y	Steel	Cadmium YP
9	M24308/2-9F	M2000/2-9F	Standard	37	Socket	Y	Steel	Cadmium YP
10	M24308/2-10F	M2000/2-10F	Standard	50	Socket	Y	Steel	Cadmium YP
11	M24308/2-281F	M2000/2-281F	Standard	9	N	N	Steel	Cadmium YP
12	M24308/2-282F	M2000/2-282F	Standard	15	N	N	Steel	Cadmium YP
13	M24308/2-283F	M2000/2-283F	Standard	25	N	N	Steel	Cadmium YP
14	M24308/2-284F	M2000/2-284F	Standard	37	N	N	Steel	Cadmium YP
15	M24308/2-285F	M2000/2-285F	Standard	50	N	N	Steel	Cadmium YP
16	M24308/2-11F	M2000/2-11F	High Density	15	Socket	N	Steel	Cadmium YP
17	M24308/2-12F	M2000/2-12F	High Density	26	Socket	N	Steel	Cadmium YP
18	M24308/2-13F	M2000/2-13F	High Density	44	Socket	N	Steel	Cadmium YP
19	M24308/2-14F	M2000/2-14F	High Density	62	Socket	N	Steel	Cadmium YP
20	M24308/2-15F	M2000/2-15F	High Density	78	Socket	N	Steel	Cadmium YP
21	M24308/2-17F	M2000/2-17F	High Density	15	Socket	Y	Steel	Cadmium YP
22	M24308/2-18F	M2000/2-18F	High Density	26	Socket	Y	Steel	Cadmium YP
23	M24308/2-19F	M2000/2-19F	High Density	44	Socket	Y	Steel	Cadmium YP
24	M24308/2-20F	M2000/2-20F	High Density	62	Socket	Y	Steel	Cadmium YP
25	M24308/2-21F	M2000/2-21F	High Density	78	Socket	Y	Steel	Cadmium YP
26	M24308/2-286F	M2000/2-286F	High Density	15	N	N	Steel	Cadmium YP
27	M24308/2-287F	M2000/2-287F	High Density	26	N	N	Steel	Cadmium YP
28	M24308/2-288F	M2000/2-288F	High Density	44	N	N	Steel	Cadmium YP
29	M24308/2-289F	M2000/2-289F	High Density	62	N	N	Steel	Cadmium YP

N - Not Supplied with connector, Y - Supplied with connector, YP - Yellow Passivation

Sr. No.	Military Designation	Manufacturers Designation	Type	Position	Crimp Contact	I R Tool	Shell	Finish
30	M24308/2-290F	M2000/2-290F	Standard	78	N	N	Steel	Cadmium YP
31	M24308/2-516	M2000/2-516	Standard	9	Socket	N	Steel	Nickel
32	M24308/2-517	M2000/2-517	Standard	15	Socket	N	Steel	Nickel
33	M24308/2-518	M2000/2-518	Standard	25	Socket	N	Steel	Nickel
34	M24308/2-519	M2000/2-519	Standard	37	Socket	N	Steel	Nickel
35	M24308/2-520	M2000/2-520	Standard	50	Socket	N	Steel	Nickel
36	M24308/2-521	M2000/2-521	Standard	9	Socket	Y	Steel	Nickel
37	M24308/2-522	M2000/2-522	Standard	15	Socket	Y	Steel	Nickel
38	M24308/2-523	M2000/2-523	Standard	25	Socket	Y	Steel	Nickel
39	M24308/2-524	M2000/2-524	Standard	37	Socket	Y	Steel	Nickel
40	M24308/2-525	M2000/2-525	Standard	50	Socket	Y	Steel	Nickel
41	M24308/2-560	M2000/2-560	Standard	9	N	N	Steel	Nickel
42	M24308/2-561	M2000/2-561	Standard	15	N	N	Steel	Nickel
43	M24308/2-562	M2000/2-562	Standard	25	N	N	Steel	Nickel
44	M24308/2-563	M2000/2-563	Standard	37	N	N	Steel	Nickel
45	M24308/2-564	M2000/2-564	Standard	50	N	N	Steel	Nickel
46	M24308/2-526	M2000/2-526	High Density	15	Socket	N	Steel	Nickel
47	M24308/2-527	M2000/2-527	High Density	26	Socket	N	Steel	Nickel
48	M24308/2-528	M2000/2-528	High Density	44	Socket	N	Steel	Nickel
49	M24308/2-529	M2000/2-529	High Density	62	Socket	N	Steel	Nickel
50	M24308/2-530	M2000/2-530	High Density	78	Socket	N	Steel	Nickel
51	M24308/2-532	M2000/2-532	High Density	15	Socket	Y	Steel	Nickel
52	M24308/2-533	M2000/2-533	High Density	26	Socket	Y	Steel	Nickel
53	M24308/2-534	M2000/2-534	High Density	44	Socket	Y	Steel	Nickel
54	M24308/2-535	M2000/2-535	High Density	62	Socket	Y	Steel	Nickel
55	M24308/2-536	M2000/2-536	High Density	78	Socket	Y	Steel	Nickel
56	M24308/2-565	M2000/2-565	High Density	15	N	N	Steel	Nickel
57	M24308/2-566	M2000/2-556	High Density	26	N	N	Steel	Nickel
58	M24308/2-567	M2000/2-5567	High Density	44	N	N	Steel	Nickel

N - Not Supplied with connector, Y - Supplied with connector, YP - Yellow Passivation



Sr. No.	Military Designation	Manufacturers Designation	Type	Position	Crimp Contact	I R Tool	Shell	Finish
59	M24308/2-568	M2000/2-568	High Density	62	N	N	Steel	Nickel
60	M24308/2-569	M2000/2-569	High Density	78	N	N	Steel	Nickel
61	M24308/4-1F	M2000/4-1F	Standard	9	Pin	N	Steel	Cadmium YP
62	M24308/4-2F	M2000/4-2F	Standard	15	Pin	N	Steel	Cadmium YP
63	M24308/4-3F	M2000/4-3F	Standard	25	Pin	N	Steel	Cadmium YP
64	M24308/4-4F	M2000/4-4F	Standard	37	Pin	N	Steel	Cadmium YP
65	M24308/4-5F	M2000/4-5F	Standard	50	Pin	N	Steel	Cadmium YP
66	M24308/4-6F	M2000/4-6F	Standard	9	Pin	Y	Steel	Cadmium YP
67	M24308/4-7F	M2000/4-7F	Standard	15	Pin	Y	Steel	Cadmium YP
68	M24308/4-8F	M2000/4-8F	Standard	25	Pin	Y	Steel	Cadmium YP
69	M24308/4-9F	M2000/4-9F	Standard	37	Pin	Y	Steel	Cadmium YP
70	M24308/4-10F	M2000/4-10F	Standard	50	Pin	Y	Steel	Cadmium YP
71	M24308/4-259F	M2000/4-259F	Standard	9	N	N	Steel	Cadmium YP
72	M24308/4-260F	M2000/4-260F	Standard	15	N	N	Steel	Cadmium YP
73	M24308/4-261F	M2000/4-261F	Standard	25	N	N	Steel	Cadmium YP
74	M24308/4-262F	M2000/4-262F	Standard	37	N	N	Steel	Cadmium YP
75	M24308/4-263F	M2000/4-263F	Standard	50	N	N	Steel	Cadmium YP
76	M24308/4-11F	M2000/4-11F	High Density	15	Pin	N	Steel	Cadmium YP
77	M24308/4-12F	M2000/4-12F	High Density	26	Pin	N	Steel	Cadmium YP
78	M24308/4-13F	M2000/4-13F	High Density	44	Pin	N	Steel	Cadmium YP
79	M24308/4-14F	M2000/4-14F	High Density	62	Pin	N	Steel	Cadmium YP
80	M24308/4-15F	M2000/4-15F	High Density	78	Pin	N	Steel	Cadmium YP
81	M24308/4-17F	M2000/4-17F	High Density	15	Pin	Y	Steel	Cadmium YP
82	M24308/4-18F	M2000/4-18F	High Density	26	Pin	Y	Steel	Cadmium YP
83	M24308/4-19F	M2000/4-19F	High Density	44	Pin	Y	Steel	Cadmium YP
84	M24308/4-20F	M2000/4-20F	High Density	62	Pin	Y	Steel	Cadmium YP
85	M24308/4-21F	M2000/4-21F	High Density	78	Pin	Y	Steel	Cadmium YP
86	M24308/4-264F	M2000/4-264F	High Density	15	N	N	Steel	Cadmium YP
87	M24308/4-265F	M2000/4-265F	High Density	26	N	N	Steel	Cadmium YP

N - Not Supplied with connector, Y - Supplied with connector, YP - Yellow Passivation



Sr. No.	Military Designation	Manufacturers Designation	Type	Position	Crimp Contact	I R Tool	Shell	Finish
88	M24308/4-266F	M2000/4-266F	High Density	44	N	N	Steel	Cadmium YP
89	M24308/4-267F	M2000/4-267F	High Density	62	N	N	Steel	Cadmium YP
90	M24308/4-268F	M2000/4-268F	High Density	78	N	N	Steel	Cadmium YP
91	M24308/4-335	M2000/4-335	Standard	9	Pin	N	Steel	Nickel
92	M24308/4-336	M2000/4-336	Standard	15	Pin	N	Steel	Nickel
93	M24308/4-337	M2000/4-337	Standard	25	Pin	N	Steel	Nickel
94	M24308/4-338	M2000/4-338	Standard	37	Pin	N	Steel	Nickel
95	M24308/4-339	M2000/4-339	Standard	50	Pin	N	Steel	Nickel
96	M24308/4-340	M2000/4-340	Standard	9	Pin	Y	Steel	Nickel
97	M24308/4-341.	M2000/4-341	Standard	15	Pin	Y	Steel	Nickel
98	M24308/4-342	M2000/4-342	Standard	25	Pin	Y	Steel	Nickel
99	M24308/4-343	M2000/4-343	Standard	37	Pin	Y	Steel	Nickel
100	M24308/4-344	M2000/4-344	Standard	50	Pin	Y	Steel	Nickel
101	M24308/4-357	M2000/4-357	Standard	9	N	N	Steel	Nickel
102	M24308/4-358	M2000/4-358	Standard	15	N	N	Steel	Nickel
103	M24308/4-359	M2000/4-359	Standard	25	N	N	Steel	Nickel
104	M24308/4-360	M2000/4-360	Standard	37	N	N	Steel	Nickel
105	M24308/4-361	M2000/4-361	Standard	50	N	N	Steel	Nickel
106	M24308/4-345	M2000/4-345	High Density	15	Pin	N	Steel	Nickel
107	M24308/4-346	M2000/4-346	High Density	26	Pin	N	Steel	Nickel
108	M24308/4-347	M2000/4-347	High Density	44	Pin	N	Steel	Nickel
109	M24308/4-348	M2000/4-348	High Density	62	Pin	N	Steel	Nickel
110	M24308/4-349	M2000/4-349	High Density	78	Pin	N	Steel	Nickel
111	M24308/4-351	M2000/4-351	High Density	15	Pin	Y	Steel	Nickel
112	M24308/4-352	M2000/4-352	High Density	26	Pin	Y	Steel	Nickel
113	M24308/4-353	M2000/4-353	High Density	44	Pin	Y	Steel	Nickel
114	M24308/4-354	M2000/4-354	High Density	62	Pin	Y	Steel	Nickel
115	M24308/4-355	M2000/4-355	High Density	78	Pin	Y	Steel	Nickel
116	M24308/4-362	M2000/4-362	High Density	15	N	N	Steel	Nickel

N - Not Supplied with connector, Y - Supplied with connector, YP - Yellow Passivation

Sr. No.	Military Designation	Manufacturers Designation	Type	Position	Crimp Contact	I R Tool	Shell	Finish
117	M24308/4-363	M2000/4-363	High Density	26	N	N	Steel	Nickel
118	M24308/4-364	M2000/4-364	High Density	44	N	N	Steel	Nickel
119	M24308/4-365	M2000/4-365	High Density	62	N	N	Steel	Nickel
120	M24308/4-366	M2000/4-366	High Density	78	N	N	Steel	Nickel
121	M24308/6-1F	M2000/6-1F	Standard	9	Socket	N	Brass	Cadmium YP
122	M24308/6-2F	M2000/6-2F	Standard	15	Socket	N	Brass	Cadmium YP
123	M24308/6-3F	M2000/6-3F	Standard	25	Socket	N	Brass	Cadmium YP
124	M24308/6-4F	M2000/6-4F	Standard	37	Socket	N	Brass	Cadmium YP
125	M24308/6-5F	M2000/6-5F	Standard	50	Socket	N	Brass	Cadmium YP
126	M24308/6-6F	M2000/6-6F	Standard	9	Socket	Y	Brass	Cadmium YP
127	M24308/6-7F	M2000/6-7F	Standard	15	Socket	Y	Brass	Cadmium YP
128	M24308/6-8F	M2000/6-8F	Standard	25	Socket	Y	Brass	Cadmium YP
129	M24308/6-9F	M2000/6-9F	Standard	37	Socket	Y	Brass	Cadmium YP
130	M24308/6-10F	M2000/6-10F	Standard	50	Socket	Y	Brass	Cadmium YP
131	M24308/6-281F	M2000/6-281F	Standard	9	N	N	Brass	Cadmium YP
132	M24308/6-282F	M2000/6-282F	Standard	15	N	N	Brass	Cadmium YP
133	M24308/6-283F	M2000/6-283F	Standard	25	N	N	Brass	Cadmium YP
134	M24308/6-284F	M2000/6-284F	Standard	37	N	N	Brass	Cadmium YP
135	M24308/6-285F	M2000/6-285F	Standard	50	N	N	Brass	Cadmium YP
136	M24308/6-11F	M2000/6-11F	High Density	15	Socket	N	Brass	Cadmium YP
137	M24308/6-12F	M2000/6-12F	High Density	26	Socket	N	Brass	Cadmium YP
138	M24308/6-13F	M2000/6-13F	High Density	44	Socket	N	Brass	Cadmium YP
139	M24308/6-14F	M2000/6-14F	High Density	62	Socket	N	Brass	Cadmium YP
140	M24308/6-15F	M2000/6-15F	High Density	78	Socket	N	Brass	Cadmium YP
141	M24308/6-17F	M2000/6-17F	High Density	15	Socket	Y	Brass	Cadmium YP
142	M24308/6-18F	M2000/6-18F	High Density	26	Socket	Y	Brass	Cadmium YP
143	M24308/6-19F	M2000/6-19F	High Density	44	Socket	Y	Brass	Cadmium YP
144	M24308/6-20F	M2000/6-20F	High Density	62	Socket	Y	Brass	Cadmium YP
145	M24308/6-21F	M2000/6-21F	High Density	78	Socket	Y	Brass	Cadmium YP

N - Not Supplied with connector, Y - Supplied with connector, YP - Yellow Passivation

Sr. No.	Military Designation	Manufacturers Designation	Type	Position	Crimp Contact	I R Tool	Shell	Finish
146	M24308/6-286F	M2000/6-286F	High Density	15	N	N	Brass	Cadmium YP
147	M24308/6-287F	M2000/6-287F	High Density	26	N	N	Brass	Cadmium YP
148	M24308/6-288F	M2000/6-288F	High Density	44	N	N	Brass	Cadmium YP
149	M24308/6-289F	M2000/6-289F	High Density	62	N	N	Brass	Cadmium YP
150	M24308/6-290F	M2000/6-290F	High Density	78	N	N	Brass	Cadmium YP
151	M24308/6-502	M2000/6-502	Standard	9	Socket	N	Brass	Gold
152	M24308/6-503	M2000/6-503	Standard	15	Socket	N	Brass	Gold
153	M24308/6-504	M2000/6-504	Standard	25	Socket	N	Brass	Gold
154	M24308/6-505	M2000/6-505	Standard	37	Socket	N	Brass	Gold
155	M24308/6-506	M2000/6-506	Standard	50	Socket	N	Brass	Gold
156	M24308/6-507	M2000/6-507	Standard	9	Socket	Y	Brass	Gold
157	M24308/6-508	M2000/6-508	Standard	15	Socket	Y	Brass	Gold
158	M24308/6-509	M2000/6-509	Standard	25	Socket	Y	Brass	Gold
159	M24308/6-510	M2000/6-510	Standard	37	Socket	Y	Brass	Gold
160	M24308/6-511	M2000/6-511	Standard	50	Socket	Y	Brass	Gold
161	M24308/6-540	M2000/6-540	Standard	9	N	N	Brass	Gold
162	M24308/6-541	M2000/6-541	Standard	15	N	N	Brass	Gold
163	M24308/6-542	M2000/6-542	Standard	25	N	N	Brass	Gold
164	M24308/6-543	M2000/6-543	Standard	37	N	N	Brass	Gold
165	M24308/6-544	M2000/6-544	Standard	50	N	N	Brass	Gold
166	M24308/6-512	M2000/6-512	High Density	15	Socket	N	Brass	Gold
167	M24308/6-513	M2000/6-513	High Density	26	Socket	N	Brass	Gold
168	M24308/6-514	M2000/6-514	High Density	44	Socket	N	Brass	Gold
169	M24308/6-515	M2000/6-515	High Density	62	Socket	N	Brass	Gold
170	M24308/6-516	M2000/6-516	High Density	78	Socket	N	Brass	Gold
171	M24308/6-518	M2000/6-518	High Density	15	Socket	Y	Brass	Gold
172	M24308/6-519	M2000/6-519	High Density	26	Socket	Y	Brass	Gold
173	M24308/6-520	M2000/6-520	High Density	44	Socket	Y	Brass	Gold
174	M24308/6-521	M2000/6-521	High Density	62	Socket	Y	Brass	Gold

N - Not Supplied with connector, Y - Supplied with connector, YP - Yellow Passivation

Sr. No.	Military Designation	Manufacturers Designation	Type	Position	Crimp Contact	I R Tool	Shell	Finish
175	M24308/6-522	M2000/6-522	High Density	78	Socket	Y	Brass	Gold
176	M24308/6-545	M2000/6-545	High Density	15	N	N	Brass	Gold
177	M24308/6-546	M2000/6-546	High Density	26	N	N	Brass	Gold
178	M24308/6-547	M2000/6-547	High Density	44	N	N	Brass	Gold
179	M24308/6-548	M2000/6-548	High Density	62	N	N	Brass	Gold
180	M24308/6-549	M2000/6-549	High Density	78	N	N	Brass	Gold
181	M24308/8-1F	M2000/8-1F	Standard	9	Pin	N	Brass	Cadmium YP
182	M24308/8-2F	M2000/8-2F	Standard	15	Pin	N	Brass	Cadmium YP
183	M24308/8-3F	M2000/8-3F	Standard	25	Pin	N	Brass	Cadmium YP
184	M24308/8-4F	M2000/8-4F	Standard	37	Pin	N	Brass	Cadmium YP
185	M24308/8-5F	M2000/8-5F	Standard	50	Pin	N	Brass	Cadmium YP
186	M24308/8-6F	M2000/8-6F	Standard	9	Pin	Y	Brass	Cadmium YP
187	M24308/8-7F	M2000/8-7F	Standard	15	Pin	Y	Brass	Cadmium YP
188	M24308/8-8F	M2000/8-8F	Standard	25	Pin	Y	Brass	Cadmium YP
189	M24308/8-9F	M2000/8-9F	Standard	37	Pin	Y	Brass	Cadmium YP
190	M24308/8-10F	M2000/8-10F	Standard	50	Pin	Y	Brass	Cadmium YP
191	M24308/8-259F	M2000/8-259F	Standard	9	N	N	Brass	Cadmium YP
192	M24308/8-260F	M2000/8-260F	Standard	15	N	N	Brass	Cadmium YP
193	M24308/8-261F	M2000/8-261F	Standard	25	N	N	Brass	Cadmium YP
194	M24308/8-262F	M2000/8-262F	Standard	37	N	N	Brass	Cadmium YP
195	M24308/8-263F	M2000/8-263F	Standard	50	N	N	Brass	Cadmium YP
196	M24308/8-11F	M2000/8-11F	High Density	15	Pin	N	Brass	Cadmium YP
197	M24308/8-12F	M2000/8-12F	High Density	26	Pin	N	Brass	Cadmium YP
198	M24308/8-13F	M2000/8-13F	High Density	44	Pin	N	Brass	Cadmium YP
199	M24308/8-14F	M2000/8-14F	High Density	62	Pin	N	Brass	Cadmium YP
200	M24308/8-15F	M2000/8-15F	High Density	78	Pin	N	Brass	Cadmium YP
201	M24308/8-17F	M2000/8-17F	High Density	15	Pin	Y	Brass	Cadmium YP
202	M24308/8-18F	M2000/8-18F	High Density	26	Pin	Y	Brass	Cadmium YP
203	M24308/8-19F	M2000/8-19F	High Density	44	Pin	Y	Brass	Cadmium YP

N - Not Supplied with connector, Y - Supplied with connector, YP - Yellow Passivation



Sr. No.	Military Designation	Manufacturers Designation	Type	Position	Crimp Contact	I R Tool	Shell	Finish
204	M24308/8-20F	M2000/8-20F	High Density	62	Pin	Y	Brass	Cadmium YP
205	M24308/8-21F	M2000/8-21F	High Density	78	Pin	Y	Brass	Cadmium YP
206	M24308/8-264F	M2000/8-264	High Density	15	N	N	Brass	Cadmium YP
207	M24308/8-265F	M2000/8-265	High Density	26	N	N	Brass	Cadmium YP
208	M24308/8-266F	M2000/8-266	High Density	44	N	N	Brass	Cadmium YP
209	M24308/8-267F	M2000/8-267	High Density	62	N	N	Brass	Cadmium YP
210	M24308/8-268F	M2000/8-268	High Density	78	N	N	Brass	Cadmium YP
211	M24308/8-335	M2000/8-335	Standard	9	Pin	N	Brass	Gold
212	M24308/8-336	M2000/8-336	Standard	15	Pin	N	Brass	Gold
213	M24308/8-337	M2000/8-337	Standard	25	Pin	N	Brass	Gold
214	M24308/8-338	M2000/8-338	Standard	37	Pin	N	Brass	Gold
215	M24308/8-339	M2000/8-339	Standard	50	Pin	N	Brass	Gold
216	M24308/8-340	M2000/8-340	Standard	9	Pin	Y	Brass	Gold
217	M24308/8-341	M2000/8-341	Standard	15	Pin	Y	Brass	Gold
218	M24308/8-342	M2000/8-342	Standard	25	Pin	Y	Brass	Gold
219	M24308/8-343	M2000/8-343	Standard	37	Pin	Y	Brass	Gold
220	M24308/8-344	M2000/8-344	Standard	50	Pin	Y	Brass	Gold
221	M24308/8-357	M2000/8-357	Standard	9	N	N	Brass	Gold
222	M24308/8-358	M2000/8-358	Standard	15	N	N	Brass	Gold
223	M24308/8-359	M2000/8-359	Standard	25	N	N	Brass	Gold
224	M24308/8-360	M2000/8-360	Standard	37	N	N	Brass	Gold
225	M24308/8-361	M2000/8-361	Standard	50	N	N	Brass	Gold
226	M24308/8-345	M2000/8-345	High Density	15	Pin	N	Brass	Gold
227	M24308/8-346	M2000/8-346	High Density	26	Pin	N	Brass	Gold
228	M24308/8-347	M2000/8-347	High Density	44	Pin	N	Brass	Gold
229	M24308/8-348	M2000/8-348	High Density	62	Pin	N	Brass	Gold
230	M24308/8-349	M2000/8-349	High Density	78	Pin	N	Brass	Gold
231	M24308/8-351	M2000/8-351	High Density	15	Pin	Y	Brass	Gold
232	M24308/8-352	M2000/8-352	High Density	26	Pin	Y	Brass	Gold

N - Not Supplied with connector, Y - Supplied with connector, YP - Yellow Passivation

Sr. No.	Military Designation	Manufacturers Designation	Type	Position	Crimp Contact	I R Tool	Shell	Finish
233	M24308/8-353	M2000/8-353	High Density	44	Pin	Y	Brass	Gold
234	M24308/8-354	M2000/8-354	High Density	62	Pin	Y	Brass	Gold
235	M24308/8-355	M2000/8-355	High Density	78	Pin	Y	Brass	Gold
236	M24308/8-362	M2000/8-362	High Density	15	N	N	Brass	Gold
237	M24308/8-363	M2000/8-363	High Density	26	N	N	Brass	Gold
238	M24308/8-364	M2000/8-364	High Density	44	N	N	Brass	Gold
239	M24308/8-365	M2000/8-365	High Density	62	N	N	Brass	Gold
240	M24308/8-366	M2000/8-366	High Density	78	N	N	Brass	Gold
241	M24308/2-1Z	M2000/2-1Z	Standard	9	Socket	N	Steel	Zinc YP
242	M24308/2-2Z	M2000/2-2Z	Standard	15	Socket	N	Steel	Zinc YP
243	M24308/2-3Z	M2000/2-3Z	Standard	25	Socket	N	Steel	Zinc YP
244	M24308/2-4Z	M2000/2-4Z	Standard	37	Socket	N	Steel	Zinc YP
245	M24308/2-5Z	M2000/2-5Z	Standard	50	Socket	N	Steel	Zinc YP
246	M24308/2-6Z	M2000/2-6Z	Standard	9	Socket	Y	Steel	Zinc YP
247	M24308/2-7Z	M2000/2-7Z	Standard	15	Socket	Y	Steel	Zinc YP
248	M24308/2-8Z	M2000/2-8Z	Standard	25	Socket	Y	Steel	Zinc YP
249	M24308/2-9Z	M2000/2-9Z	Standard	37	Socket	Y	Steel	Zinc YP
250	M24308/2-10Z	M2000/2-10Z	Standard	50	Socket	Y	Steel	Zinc YP
251	M24308/2-281Z	M2000/2-281Z	Standard	9	N	N	Steel	Zinc YP
252	M24308/2-282Z	M2000/2-282Z	Standard	15	N	N	Steel	Zinc YP
253	M24308/2-283Z	M2000/2-283Z	Standard	25	N	N	Steel	Zinc YP
254	M24308/2-284Z	M2000/2-284Z	Standard	37	N	N	Steel	Zinc YP
255	M24308/2-285Z	M2000/2-285Z	Standard	50	N	N	Steel	Zinc YP
256	M24308/2-11Z	M2000/2-11Z	High Density	15	Socket	N	Steel	Zinc YP
257	M24308/2-12Z	M2000/2-12Z	High Density	26	Socket	N	Steel	Zinc YP
258	M24308/2-13Z	M2000/2-13Z	High Density	44	Socket	N	Steel	Zinc YP
259	M24308/2-14Z	M2000/2-14Z	High Density	64	Socket	N	Steel	Zinc YP
260	M24308/2-15Z	M2000/2-15Z	High Density	78	Socket	N	Steel	Zinc YP
261	M24308/2-17Z	M2000/2-17Z	High Density	15	Socket	Y	Steel	Zinc YP
262	M24308/2-18Z	M2000/2-18Z	High Density	26	Socket	Y	Steel	Zinc YP

Sr. No.	Military Designation	Manufacturers Designation	Type	Position	Crimp Contact	I R Tool	Shell	Finish
263	M24308/2-19Z	M2000/2-19Z	High Density	44	Socket	Y	Steel	Zinc YP
264	M24308/2-20Z	M2000/2-20Z	High Density	62	Socket	Y	Steel	Zinc YP
265	M24308/2-21Z	M2000/2-21Z	High Density	78	Socket	Y	Steel	Zinc YP
266	M24308/2-286Z	M2000/2-286Z	High Density	15	N	N	Steel	Zinc YP
267	M24308/2-287Z	M2000/2-287Z	High Density	26	N	N	Steel	Zinc YP
268	M24308/2-288Z	M2000/2-288Z	High Density	44	N	N	Steel	Zinc YP
269	M24308/2-289Z	M2000/2-289Z	High Density	62	N	N	Steel	Zinc YP
270	M24308/2-290Z	M2000/2-290Z	High Density	78	N	N	Steel	Zinc YP
271	M24308/4-1Z	M2000/4-1Z	Standard	9	Pin	N	Steel	Zinc YP
272	M24308/4-2Z	M2000/4-2Z	Standard	15	Pin	N	Steel	Zinc YP
273	M24308/4-3Z	M2000/4-3Z	Standard	25	Pin	N	Steel	Zinc YP
274	M24308/4-4Z	M2000/4-4Z	Standard	37	Pin	N	Steel	Zinc YP
275	M24308/4-5Z	M2000/4-5Z	Standard	50	Pin	N	Steel	Zinc YP
276	M24308/4-6Z	M2000/4-6Z	Standard	9	Pin	Y	Steel	Zinc YP
277	M24308/4-7Z	M2000/4-7Z	Standard	15	Pin	Y	Steel	Zinc YP
278	M24308/4-8Z	M2000/4-8Z	Standard	25	Pin	Y	Steel	Zinc YP
279	M24308/4-9Z	M2000/4-9Z	Standard	37	Pin	Y	Steel	Zinc YP
280	M24308/4-10Z	M2000/4-10Z	Standard	50	Pin	Y	Steel	Zinc YP
281	M24308/4-259Z	M2000/4-259Z	Standard	9	N	N	Steel	Zinc YP
282	M24308/4-260Z	M2000/4-260Z	Standard	15	N	N	Steel	Zinc YP
283	M24308/4-261Z	M2000/4-261Z	Standard	25	N	N	Steel	Zinc YP
284	M24308/4-262Z	M2000/4-262Z	Standard	37	N	N	Steel	Zinc YP
285	M24308/4-263Z	M2000/4-263Z	Standard	50	N	N	Steel	Zinc YP
286	M24308/4-11Z	M2000/4-11Z	High Density	15	Pin	N	Steel	Zinc YP
287	M24308/4-12Z	M2000/4-12Z	High Density	26	Pin	N	Steel	Zinc YP
288	M24308/4-13Z	M2000/4-13Z	High Density	44	Pin	N	Steel	Zinc YP
289	M24308/4-14Z	M2000/4-14Z	High Density	62	Pin	N	Steel	Zinc YP
290	M24308/4-15Z	M2000/4-15Z	High Density	78	Pin	N	Steel	Zinc YP
291	M24308/4-17Z	M2000/4-17Z	High Density	15	Pin	Y	Steel	Zinc YP
292	M24308/4-18Z	M2000/4-18Z	High Density	26	Pin	Y	Steel	Zinc YP

Sr. No.	Military Designation	Manufacturers Designation	Type	Position	Crimp Contact	I R Tool	Shell	Finish
293	M24308/4-19Z	M2000/4-19Z	High Density	44	Pin	Y	Steel	Zinc YP
294	M24308/4-20Z	M2000/4-20Z	High Density	62	Pin	Y	Steel	Zinc YP
295	M24308/4-21Z	M2000/4-21Z	High Density	78	Pin	Y	Steel	Zinc YP
296	M24308/4-264Z	M2000/4-264Z	High Density	15	N	N	Steel	Zinc YP
297	M24308/4-265Z	M2000/4-265Z	High Density	26	N	N	Steel	Zinc YP
298	M24308/4-266Z	M2000/4-266Z	High Density	44	N	N	Steel	Zinc YP
299	M24308/4-267Z	M2000/4-267Z	High Density	62	N	N	Steel	Zinc YP
300	M24308/4-268Z	M24308/4-268Z	High Density	78	N	N	Steel	Zinc YP
301	M24308/6-1Z	M2000/6-1Z	Standard	9	Socket	N	Brass	Zinc YP
302	M24308/6-2Z	M2000/6-2Z	Standard	15	Socket	N	Brass	Zinc YP
303	M24308/6-3Z	M2000/6-3Z	Standard	25	Socket	N	Brass	Zinc YP
304	M24308/6-4Z	M2000/6-4Z	Standard	37	Socket	N	Brass	Zinc YP
305	M24308/6-5Z	M2000/6-5Z	Standard	50	Socket	N	Brass	Zinc YP
306	M24308/6-6Z	M2000/6-6Z	Standard	9	Socket	Y	Brass	Zinc YP
307	M24308/6-7Z	M2000/6-7Z	Standard	15	Socket	Y	Brass	Zinc YP
308	M24308/6-8Z	M2000/6-8Z	Standard	25	Socket	Y	Brass	Zinc YP
309	M24308/6-9Z	M2000/6-9Z	Standard	37	Socket	Y	Brass	Zinc YP
310	M24308/6-10Z	M2000/6-10Z	Standard	50	Socket	Y	Brass	Zinc YP
311	M24308/6-281Z	M2000/6-281Z	Standard	9	N	N	Brass	Zinc YP
312	M24308/6-282Z	M2000/6-282Z	Standard	15	N	N	Brass	Zinc YP
313	M24308/6-283Z	M2000/6-283Z	Standard	25	N	N	Brass	Zinc YP
314	M24308/6-284Z	M2000/6-284Z	Standard	37	N	N	Brass	Zinc YP
315	M24308/6-285Z	M2000/6-285Z	Standard	50	N	N	Brass	Zinc YP
316	M24308/6-11Z	M2000/6-11Z	High Density	15	Socket	N	Brass	Zinc YP
317	M24308/6-12Z	M2000/6-12Z	High Density	26	Socket	N	Brass	Zinc YP
318	M24308/6-13Z	M2000/6-13Z	High Density	44	Socket	N	Brass	Zinc YP
319	M24308/6-14Z	M2000/6-14Z	High Density	62	Socket	N	Brass	Zinc YP
320	M24308/6-15Z	M2000/6-15Z	High Density	78	Socket	N	Brass	Zinc YP
321	M24308/6-17Z	M2000/6-17Z	High Density	15	Socket	Y	Brass	Zinc YP
322	M24308/6-18Z	M2000/6-18Z	High Density	26	Socket	Y	Brass	Zinc YP

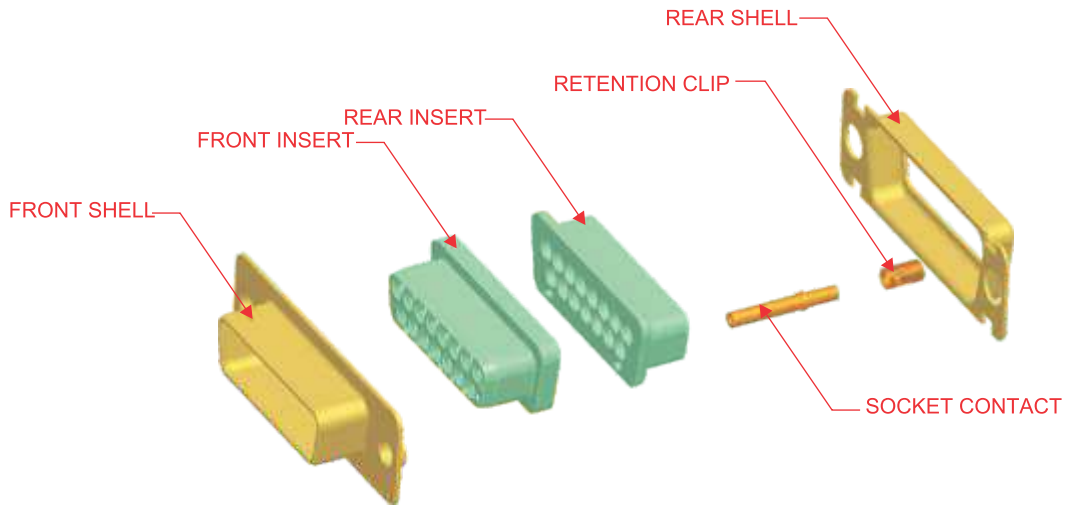


Sr. No.	Military Designation	Manufacturers Designation	Type	Position	Crimp Contact	I R Tool	Shell	Finish
323	M24308/6-19Z	M2000/6-19Z	High Density	44	Socket	Y	Brass	Zinc YP
324	M24308/6-20Z	M2000/6-20Z	High Density	62	Socket	Y	Brass	Zinc YP
325	M24308/6-21Z	M2000/6-21Z	High Density	78	Socket	Y	Brass	Zinc YP
326	M24308/6-286Z	M2000/6-286Z	High Density	15	N	N	Brass	Zinc YP
327	M24308/6-287Z	M2000/6-287Z	High Density	26	N	N	Brass	Zinc YP
328	M24308/6-288Z	M2000/6-288Z	High Density	44	N	N	Brass	Zinc YP
329	M24308/6-289Z	M2000/6-289Z	High Density	62	N	N	Brass	Zinc YP
330	M24308/6-290Z	M2000/6-290Z	High Density	78	N	N	Brass	Zinc YP
331	M24308/8-1Z	M2000/8-1Z	Standard	9	Pin	N	Brass	Zinc YP
332	M24308/8-2Z	M2000/8-2Z	Standard	15	Pin	N	Brass	Zinc YP
333	M24308/8-3Z	M2000/8-3Z	Standard	25	Pin	N	Brass	Zinc YP
334	M24308/8-4Z	M2000/8-4Z	Standard	37	Pin	N	Brass	Zinc YP
335	M24308/8-5Z	M2000/8-5Z	Standard	50	Pin	N	Brass	Zinc YP
336	M24308/8-6Z	M2000/8-6Z	Standard	9	Pin	Y	Brass	Zinc YP
337	M24308/8-7Z	M2000/8-7Z	Standard	15	Pin	Y	Brass	Zinc YP
338	M24308/8-8Z	M2000/8-8Z	Standard	25	Pin	Y	Brass	Zinc YP
339	M24308/8-9Z	M24308/8-9Z	Standard	37	Pin	Y	Brass	Zinc YP
340	M24308/8-10Z	M24308/8-10Z	Standard	50	Pin	Y	Brass	Zinc YP
341	M24308/8-259Z	M2000/8-259Z	Standard	9	N	N	Brass	Zinc YP
342	M24308/8-260Z	M2000/8-260Z	Standard	15	N	N	Brass	Zinc YP
343	M24308/8-261Z	M2000/8-261Z	Standard	25	N	N	Brass	Zinc YP
344	M24308/8-262Z	M2000/8-262Z	Standard	37	N	N	Brass	Zinc YP
345	M24308/8-263Z	M2000/8-263Z	Standard	50	N	N	Brass	Zinc YP
346	M24308/8-11Z	M2000/8-11Z	High Density	15	Pin	N	Brass	Zinc YP
347	M24308/8-12Z	M2000/8-12Z	High Density	26	Pin	N	Brass	Zinc YP
348	M24308/8-13Z	M2000/8-13Z	High Density	44	Pin	N	Brass	Zinc YP
349	M24308/8-14Z	M2000/8-14Z	High Density	62	Pin	N	Brass	Zinc YP
350	M24308/8-15Z	M2000/8-15Z	High Density	78	Pin	N	Brass	Zinc YP
351	M24308/8-17Z	M2000/8-17Z	High Density	15	Pin	Y	Brass	Zinc YP
352	M24308/8-18Z	M2000/8-18Z	High Density	26	Pin	Y	Brass	Zinc YP

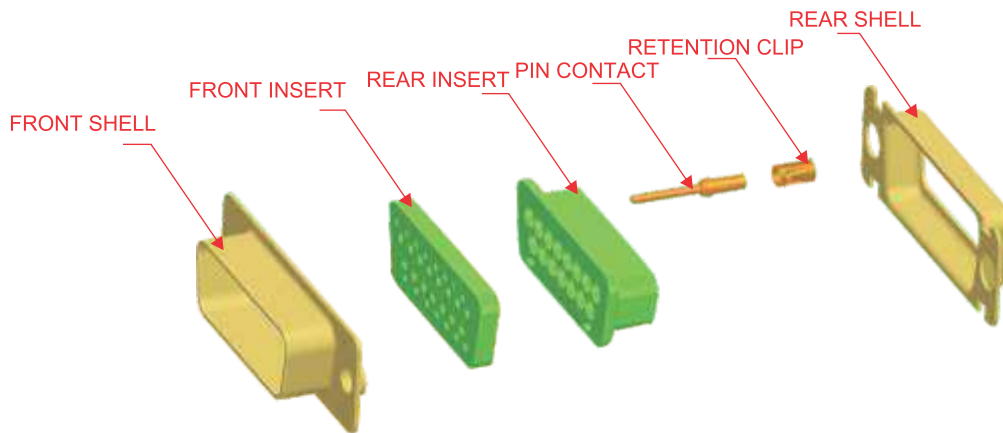
Sr. No.	Military Designation	Manufacturers Designation	Type	Position	Crimp Contact	I R Tool	Shell	Finish
353	M24308/8-19Z	M2000/8-19Z	High Density	44	Pin	Y	Brass	Zinc YP
354	M24308/8-20Z	M2000/8-20Z	High Density	62	Pin	Y	Brass	Zinc YP
355	M24308/8-21Z	M2000/8-21Z	High Density	78	Pin	Y	Brass	Zinc YP
356	M24308/8-264Z	M2000/8-264Z	High Density	15	N	N	Brass	Zinc YP
357	M24308/8-265Z	M2000/8-265Z	High Density	26	N	N	Brass	Zinc YP
358	M24308/8-266Z	M2000/8-266Z	High Density	44	N	N	Brass	Zinc YP
359	M24308/8-267Z	M2000/8-267Z	High Density	62	N	N	Brass	Zinc YP
360	M24308/8-268Z	M2000/8-268Z	High Density	78	N	N	Brass	Zinc YP

N - Not Supplied with connector, Y - Supplied with connector, YP - Yellow Passivation

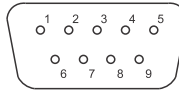
## Receptacle Assembly Exploded View



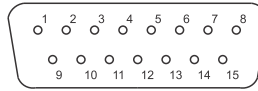
## Plug Assembly Exploded View



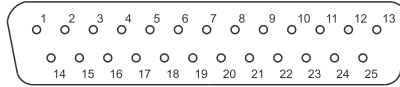
# Insert Arrangement For Standard D-Sub Connectors



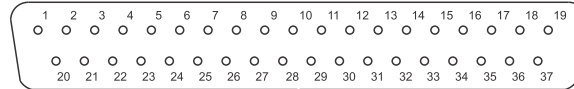
9 positions



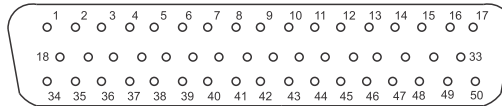
15 positions



25 positions

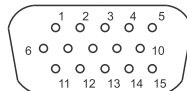


37 positions

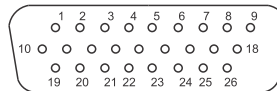


50 positions

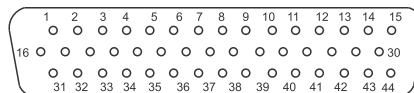
## Insert Arrangement for High Density D Sub Connectors



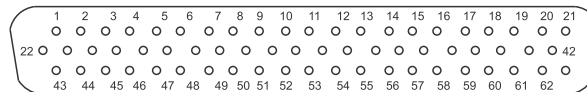
15 positions



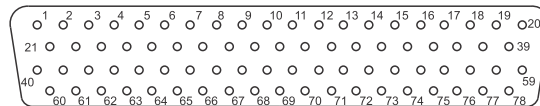
26 positions



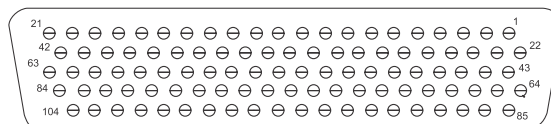
44 positions



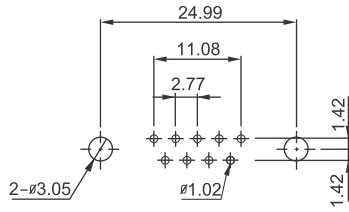
62 positions



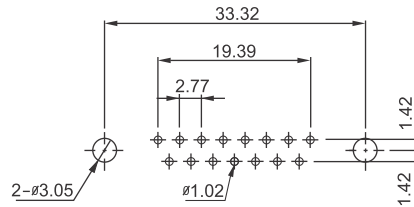
78 positions



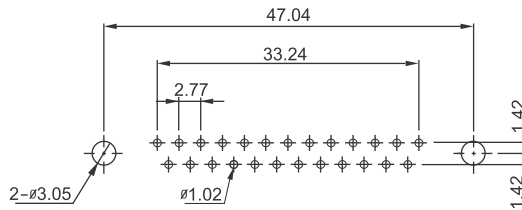
DD 104



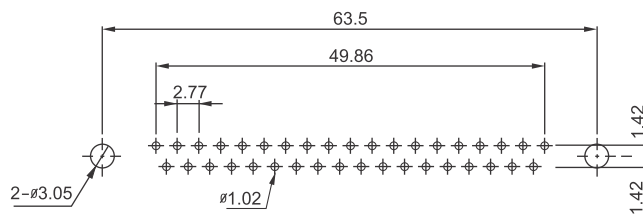
9 positions



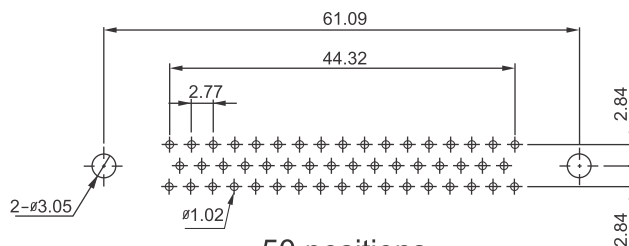
15 positions



25 positions



37 positions



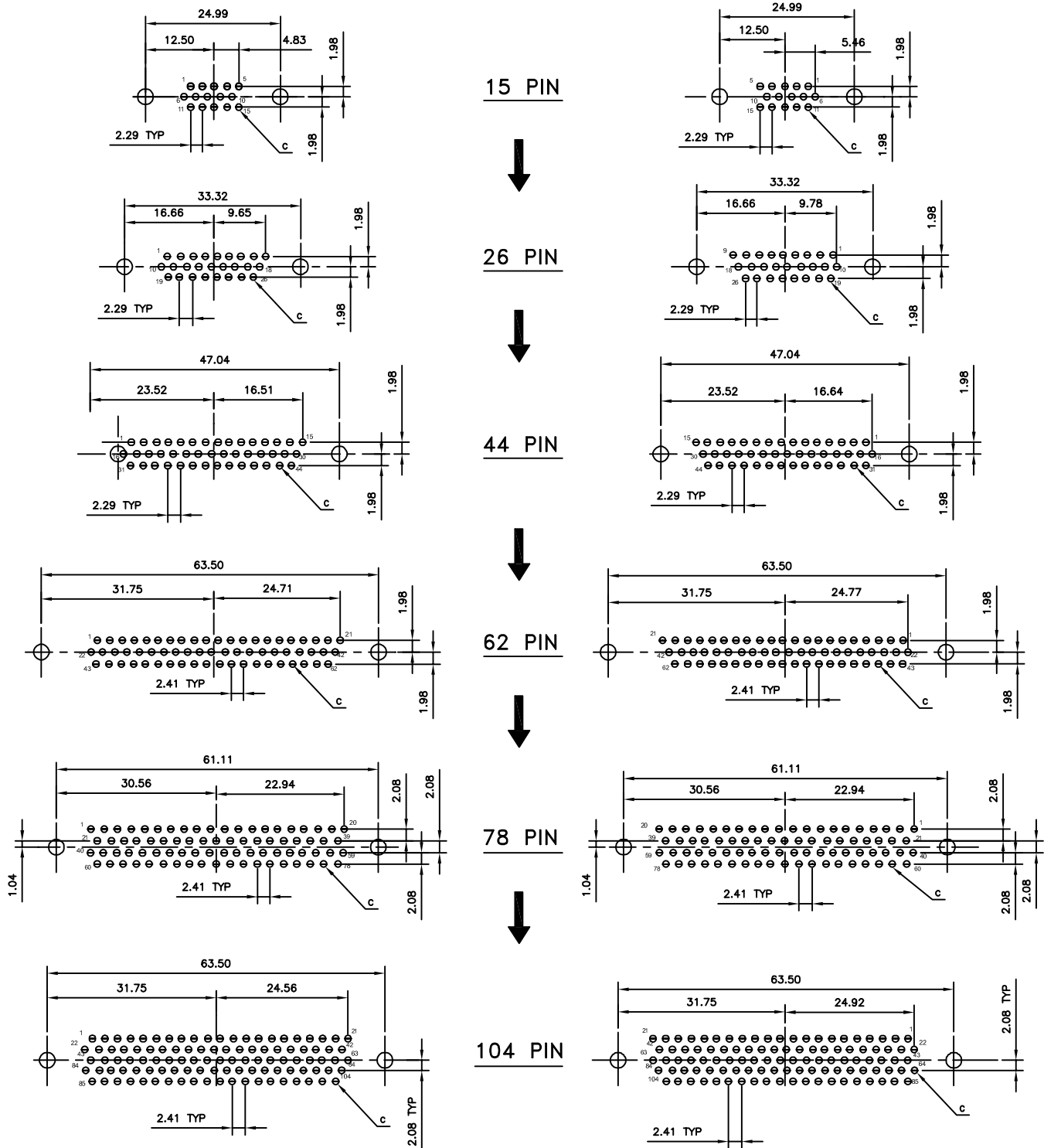
50 positions

Mount Connector With Mating Face Positioned To Direction Of Arrow



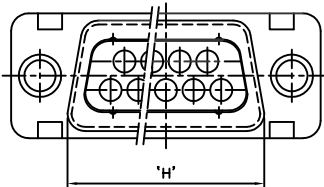
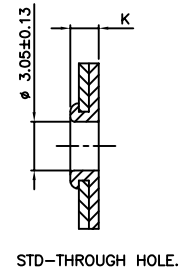
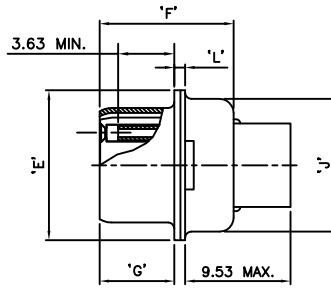
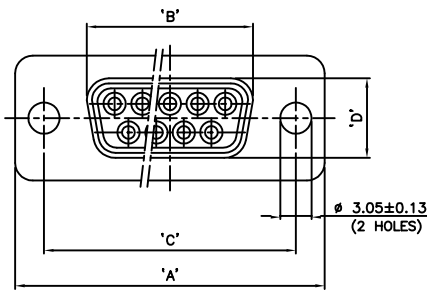
## MALE

## FEMALE



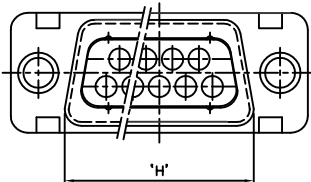
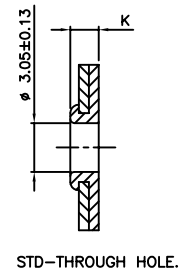
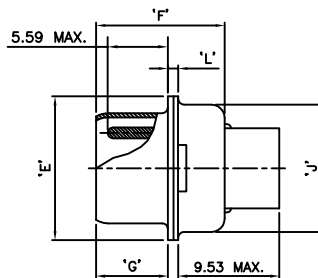
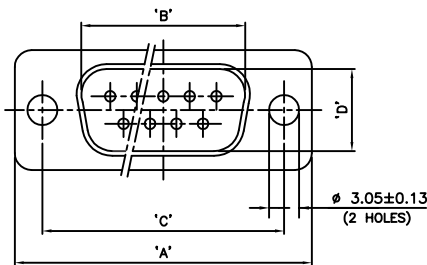
1. C -  $\varnothing$ 0.89 HOLE FOR CONTACT TERMINATION POSITION
2. MOUNT CONNECTOR WITH MATING FACE POSITIONED TO DIRECTION OF ARROW

# R eceptacle Connector With Polarized Shell & Socket Crimp Contact



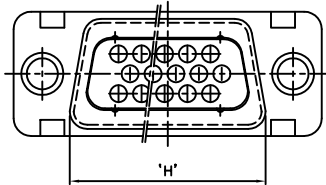
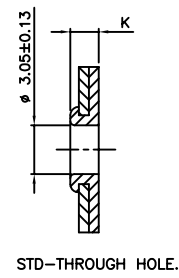
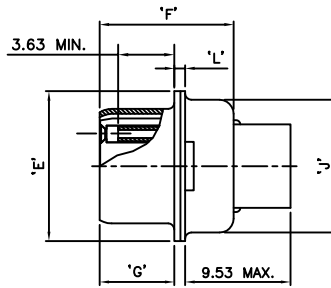
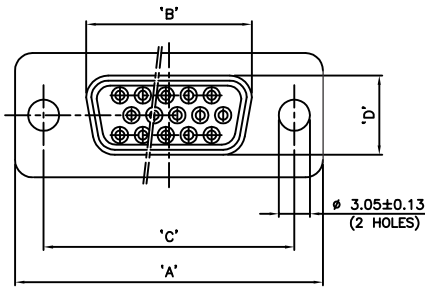
SHELL SIZE	NO. OF PIN	'A'	'B'	'C'	'D'	'E'	'F'	'G'	'H'	'J'	'K'	'L'
1	09	30.43	16.21	24.87					19.02			0.51
		31.19	16.46	25.12					19.53			1.02
2	15	38.76	24.54	33.20					27.25			0.51
		39.52	24.79	33.45					27.76			1.02
3	25	52.65	38.25	46.91	7.77	12.17	10.64	6.05	41.02	10.46	0.89	0.74
		53.42	38.51	47.17	8.03	12.93	11.15		6.30	41.53		10.97
4	37	68.94	54.71	63.37					57.45			0.74
		69.70	54.97	63.63					57.96			1.25
5	50	66.55	52.30	60.99	10.62	14.99			55.07	13.31		0.74
		67.31	52.55	61.24	10.87	15.75			55.58	13.82		1.25

## Plug Connector With Polarized Shell & Pin Crimp Contact



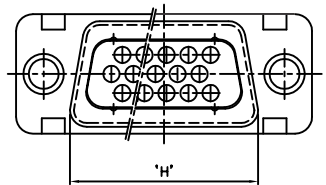
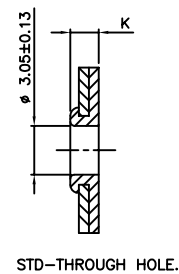
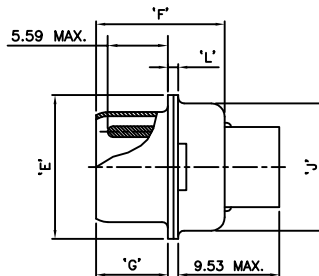
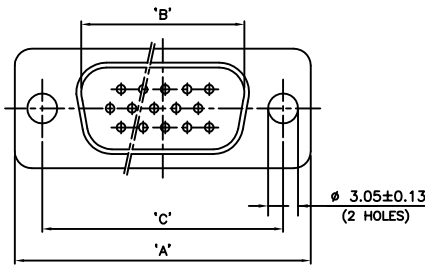
SHELL SIZE	NO. OF PIN	'A'	'B'	'C'	'D'	'E'	'F'	'G'	'H'	'J'	'K'	'L'
1	09	30.43	16.79	24.87			10.46	5.82	19.02		0.89	0.51
		31.19	17.04	25.12			10.97	6.12	19.53		1.52	1.02
2	15	38.76	25.12	33.20			10.46	5.82	27.25		0.89	0.51
		39.52	25.37	33.45			10.97	6.12	27.76		1.52	1.02
3	25	52.65	38.84	46.91	8.23	12.17	10.57		41.02	10.46		0.74
		53.42	39.09	47.17	8.48	12.93	11.07		41.53	10.97		1.78
4	37	68.94	55.30	63.37			10.57	5.99	57.45			0.74
		69.70	55.55	63.63			11.07		5.67			57.96
5	50	66.55	52.68	60.99	11.07	14.99	10.57		55.07	13.31		0.74
		67.31	52.93	61.24	11.33	15.75	11.07		55.58	13.82		1.78

# R eceptacle Connector With Polarized Shell & Socket Crimp Contact-High Density



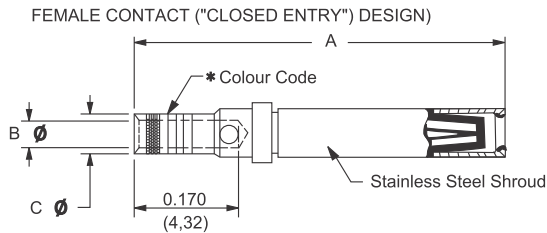
SHELL SIZE	NO. OF PIN	'A'	'B'	'C'	'D'	'E'	'F'	'G'	'H'	'J'	'K'	'L'
1	15	30.43	16.21	24.87					19.02			0.51
		31.19	16.46	25.12					19.53			1.02
2	26	38.76	24.54	33.20					27.25			0.51
		39.52	24.79	33.45					27.76			1.02
3	44	52.65	38.25	46.91	7.77	12.17	10.64	6.05	41.02	10.46	0.89	0.74
		53.42	38.51	47.17	8.03	12.93	11.15		6.30			41.53
4	62	68.94	54.71	63.37					57.45			0.74
		69.70	54.97	63.63					57.96			1.25
5	78	66.55	52.30	60.99	10.62	14.99			55.07	13.31		0.74
		67.31	52.55	61.24	10.87	15.75			55.58			13.82

## Plug Connector With Polarized Shell & Pin Crimp Contact-High Density



SHELL SIZE	NO. OF PIN	'A'	'B'	'C'	'D'	'E'	'F'	'G'	'H'	'J'	'K'	'L'
1	15	30.43	16.79	24.87			10.46	5.82	19.02		0.89	0.51
		31.19	17.04	25.12			10.97	6.12	19.53		1.52	1.02
2	26	38.76	25.12	33.20			10.46	5.82	27.25		0.89	0.51
		39.52	25.37	33.45			10.97	6.12	27.76		1.52	1.02
3	44	52.65	38.84	46.91	8.23	12.17	10.57		41.02	10.46	1.27	0.74
		53.42	39.09	47.17	8.48	12.93	11.07		41.53		10.97	1.78
4	62	68.94	55.30	63.37			10.57	5.99	57.45		1.27	0.74
		69.70	55.55	63.63			11.07	5.67	57.96		1.78	1.25
5	78	66.55	52.68	60.99	11.07	14.99	10.57		55.07	13.31	1.27	0.74
		67.31	52.93	61.24	11.33	15.75	11.07		55.58		13.82	1.78

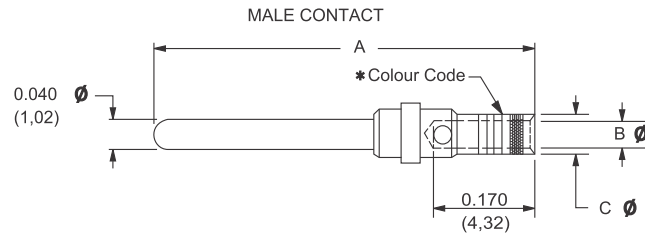
## CRIMP CONTACTS Closed crimp barrel



Material - Copper Alloy.  
Plating - Gold flash over nickel or  
0.000050 inch (1,25  $\mu$ ) gold over copper for  
military specification contacts.

\*Colour Code - ORANGE / BLUE / GREY for military  
specification contacts

PART NO.	WIRE SIZE (AWG (MM <sup>2</sup> ))	A	B $\emptyset$	C $\emptyset$
M2000-107687	20/22/24 (0,5/0,3/0,25)	0.538 (13,67)	0.044 (1,12)	0.066 (1,68)
M2000-109979	26/28/30 (0,12/0,08/0,5)	0.538 (13,67)	0.027 (0,69)	0.066 (1,68)
*M39029/63-368	20/22/24 (0,5/0,3/0,25)	0.538 (13,67)	0.044 (1,12)	0.066 (1,68)



Material - Brass  
Plating - Gold flash over nickel or  
0.000050 inch (1,25  $\mu$ ) gold over copper for  
military specification contacts.

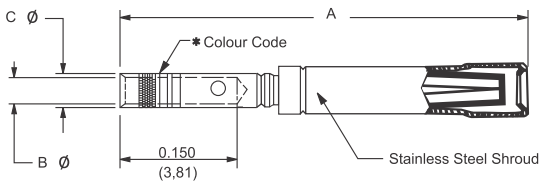
\*Colour Code - ORANGE / BLUE / WHITE for military  
specification contacts

PART NO.	WIRE SIZE (AWG (MM <sup>2</sup> ))	A	B $\emptyset$	C $\emptyset$
M2000-107688	20/22/24 (0,5/0,3/0,25)	0.550 (13,97)	0.044 (1,12)	0.066 (1,68)
M2000-109980	26/28/30 (0,12/0,08/0,5)	0.550 (13,97)	0.027 (0,69)	0.066 (1,68)
*M39029/64-369	20/22/24 (0,5/0,3/0,25)	0.550 (13,97)	0.044 (1,12)	0.066 (1,68)

Crimp contacts can be supplied in kit with connector or ordered separately.

## Contact Information For High Density D-Sub

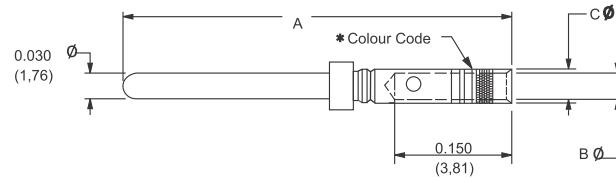
## CRIMP CONTACTS Closed crimp barrel



Material - Copper Alloy.  
Plating - Gold flash over nickel or  
0.000050 inch (1,25  $\mu$ ) gold over copper for  
military specification contacts.

\* Colour Code - ORANGE/GREEN/YELLOW for military  
specification contacts

PART NO.	WIRE SIZE (AWG (MM <sup>2</sup> ))	A	B $\emptyset$	C $\emptyset$
M2000-107294	22/24/26/28 (0,3/0,25/0,12/0,08/0,05)	0.518 (13,16)	0.035 (0,89)	0.047 (1,19)
*M39029/57-354	22/24/26/28 (0,3/0,25/0,12/0,08)	0.518 (13,16)	0.035 (0,89)	0.047 (1,19)



Material - Brass  
Plating - Gold flash over nickel or  
0.000050 inch (1,25  $\mu$ ) gold over copper for  
military specification contacts.

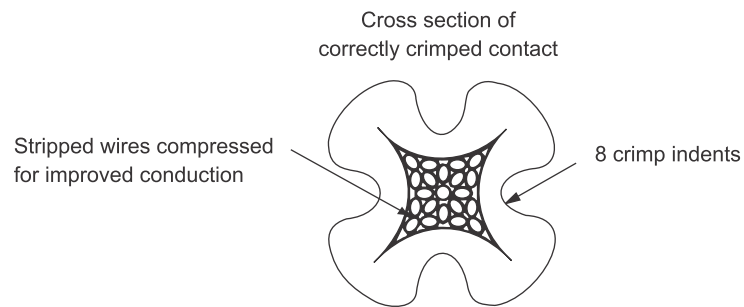
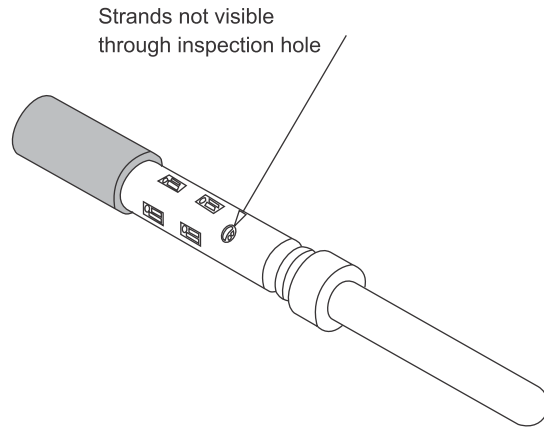
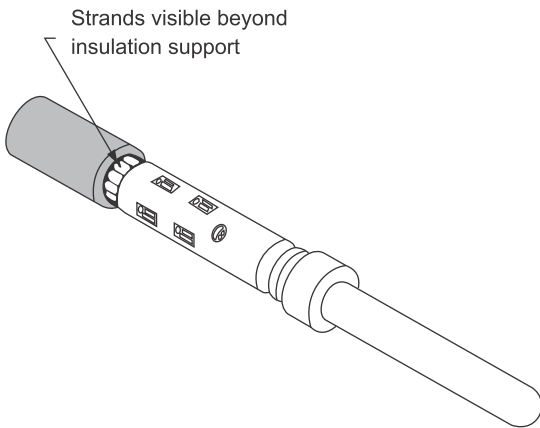
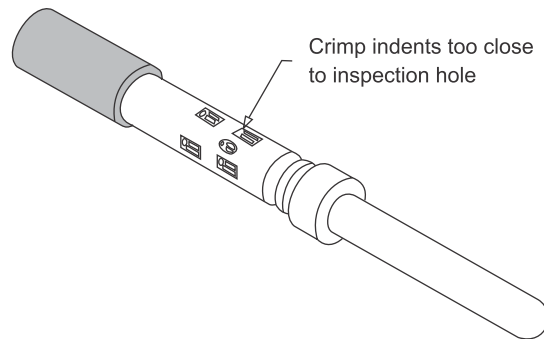
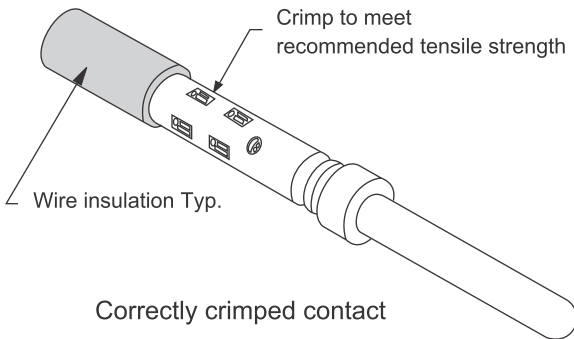
\* Colour Code - ORANGE / BLUE / BLACK for military  
specification contacts

PART NO.	WIRE SIZE (AWG (MM <sup>2</sup> ))	A	B $\emptyset$	C $\emptyset$
M2000-105794	22/24/26/28 (0,3/0,25/0,12/0,08/0,05)	0.531 (13,49)	0.035 (0,89)	0.047 (1,19)
*M39029/58-360	22/24/26/28 (0,3/0,25/0,12/0,08)	0.531 (13,49)	0.035 (0,89)	0.047 (1,19)

Crimp contacts can be supplied in kit with connector or ordered separately.

For all tools :

- Strands to be visible through the inspection hole
- Strands not to be visible beyond the insulation support
- Check for peeled gold and bent contact



Amphenol recommended tools for Standard / High Density Series Contact

Miniature step adjustable tool (M22520/2-01)  
Part No. M2000-CRT



This miniature 8 step adjustable hand crimping tool produces an 8 indent crimp configuration and will crimp wire sizes 18 AWG (1.0mm<sup>2</sup>) through 32 AWG (0.3mm<sup>2</sup>)

To crimp wire size 18 AWG (1.0mm<sup>2</sup>), order contact positioner K13-1. To crimp wire size AWG (0.5mm<sup>2</sup>) through 30 AWG (0.05mm<sup>2</sup>) order contact positioner K-13-1. Each positioner is equipped with a data plate which gives the correct crimp-depth setting for each wire size and must be used with M22520/2-01 tool frame for best results when crimping M2000 (M24308) Series contacts.

## Insertion/Removal Tool

M81969/39-01  
(M2000-107689)



One end of this tool is used to insert contacts into M2000 (M24308) Series connectors. The other end is used to extract contacts. This is accomplished by sliding the extraction tip down the wire into the connector until it bottoms against

the contacts. A slight rotation while pushing will release the contacts, which are then extracted by simultaneously pulling on the wire.