



Chipsmall Limited consists of a professional team with an average of over 10 year of expertise in the distribution of electronic components. Based in Hongkong, we have already established firm and mutual-benefit business relationships with customers from,Europe,America and south Asia,supplying obsolete and hard-to-find components to meet their specific needs.

With the principle of “Quality Parts,Customers Priority,Honest Operation,and Considerate Service”,our business mainly focus on the distribution of electronic components. Line cards we deal with include Microchip,ALPS,ROHM,Xilinx,Pulse,ON,Everlight and Freescale. Main products comprise IC,Modules,Potentiometer,IC Socket,Relay,Connector.Our parts cover such applications as commercial,industrial, and automotives areas.

We are looking forward to setting up business relationship with you and hope to provide you with the best service and solution. Let us make a better world for our industry!



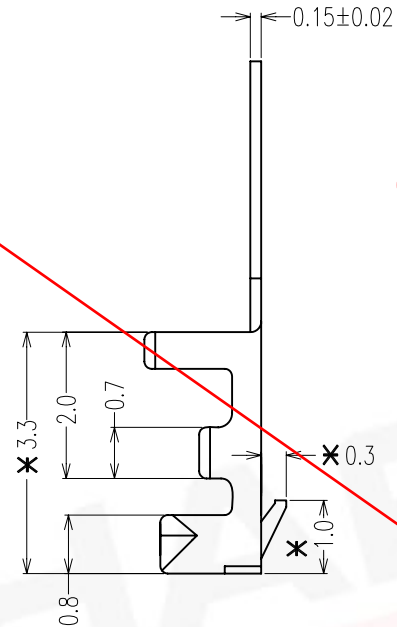
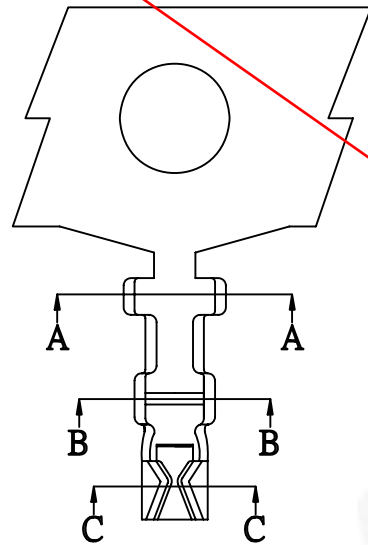
## Contact us

Tel: +86-755-8981 8866 Fax: +86-755-8427 6832

Email & Skype: info@chipsmall.com Web: www.chipsmall.com

Address: A1208, Overseas Decoration Building, #122 Zhenhua RD., Futian, Shenzhen, China



**OBSOLETE**

## SPECIFICATIONS:

MATERIAL:-

PHOSPHOR BRONZE

FINISH:-

TIN PLATED

ELECTRICAL:-

CURRENT RATING: 1A AC/DC

WORKING VOLTAGE: 100V AC/DC

WITHSTAND VOLTAGE: 500V AC/MINUTE

CONTACT RESISTANCE: 20 mΩ MIN.

INSULATION RESISTANCE: 1000 MΩ MIN.

ENVIRONMENTAL:-

TEMPERATURE RANGE: -25°C TO +85°C

OTHERS:-

APPLICABLE WIRE: AWG #28 TO #32

INSULATION OD: 0.90MM MAX.

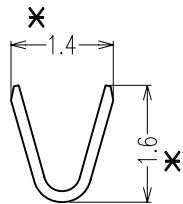
ACCEPTS: M30-130 XX 00 HOUSING

NOTES: ALL DIMENSIONS AND NOTES

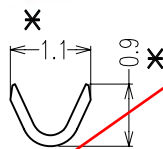
MARKED \* ARE CRITICAL AND

MUST BE CHECKED IN ACCORDANCE

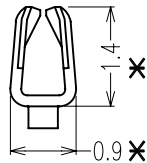
WITH QUALITY DOC. QI-02A



SEC: A-A



SEC: B-B



SEC: C-C

Allan	2	02.07.08	A139
HTUT	1	14.02.07	-
NAME	ISS.	DATE	C/NOTE
APPROVED: _____			
CHECKED: <i>Ben</i>			
DRAWN: Allan			
CUSTOMER REF.:			
ASSEMBLY DRG:			

**HARWIN**

HARWIN USA  
TEL: 603 893 5376  
FAX: 603 893 5396  
mis@harwin.com

HARWIN Europe (UK)  
TEL: 023 9231 4545  
FAX: 023 9231 4590  
mis@harwin.co.uk

HARWIN Asia  
TEL: +65 6 779 4909  
FAX: +65 6 779 3868  
mis@harwin.com.sg

THIS DRAWING AND ANY  
INFORMATION OR DESCRIPTIVE  
MATTER SET OUT HEREON ARE  
CONFIDENTIAL AND COPYRIGHT  
PROPERTY OF THE HARWIN  
GROUP AND MUST NOT BE  
DISCLOSED, LOANED, COPIED  
OR USED FOR MANUFACTURING,  
TENDERING OR FOR ANY  
OTHER PURPOSE WITHOUT  
THEIR WRITTEN PERMISSION.

## TOLERANCES

X. = ±1mm  
X.X = ±0.25mm  
X.XX = ±0.15mm  
X.XXX = ±0.08mm

ANGLES = ±5°  
UNLESS STATED

## MATERIAL:

SEE NOTES

## FINISH:

SEE NOTES

## S/AREA:

mm<sup>2</sup>

## TITLE:

1.25MM PITCH CRIMP TERMINAL

## DRAWING NUMBER:

M30-3000046

SHT  
1  
OF  
1