



Chipsmall Limited consists of a professional team with an average of over 10 year of expertise in the distribution of electronic components. Based in Hongkong, we have already established firm and mutual-benefit business relationships with customers from,Europe,America and south Asia,supplying obsolete and hard-to-find components to meet their specific needs.

With the principle of "Quality Parts,Customers Priority,Honest Operation,and Considerate Service",our business mainly focus on the distribution of electronic components. Line cards we deal with include Microchip,ALPS,ROHM,Xilinx,Pulse,ON,Everlight and Freescale. Main products comprise IC,Modules,Potentiometer,IC Socket,Relay,Connector.Our parts cover such applications as commercial,industrial, and automotives areas.

We are looking forward to setting up business relationship with you and hope to provide you with the best service and solution. Let us make a better world for our industry!



Contact us

Tel: +86-755-8981 8866 Fax: +86-755-8427 6832

Email & Skype: info@chipsmall.com Web: www.chipsmall.com

Address: A1208, Overseas Decoration Building, #122 Zhenhua RD., Futian, Shenzhen, China



Customer Information Sheet

DRAWING No.: M30-600XX46

SHEET 2 OF 2

IF IN DOUBT - ASK



NOT TO SCALE

THIRD ANGLE PROJECTION

ALL DIMENSIONS IN mm

SPECIFICATIONS:

MATERIAL:
 MOULDING = NYLON 6T NATURAL, UL94V-0
 CONTACT = BRASS
 RETAINER = PHOSPHOR BRONZE

FINISH:
 CONTACT = 2.03µ - 2.54µ 100% TIN
 OVER 0.76µ NICKEL
 RETAINER = 2.03µ - 2.54µ 100% TIN
 OVER 0.76µ NICKEL

ELECTRICAL:
 CURRENT RATING = 1A AC/DC
 VOLTAGE RATING = 150V AC/DC
 CONTACT RESISTANCE = 30mΩ MAX
 INSULATION RESISTANCE = 500 MΩ MIN
 DIELECTRIC WITHSTANDING VOLTAGE = 500V AC
 FOR ONE MINUTE

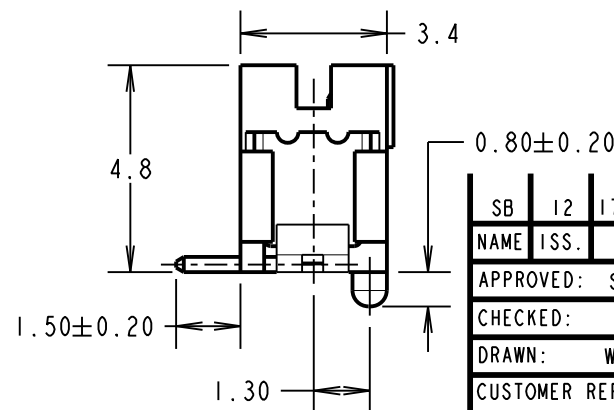
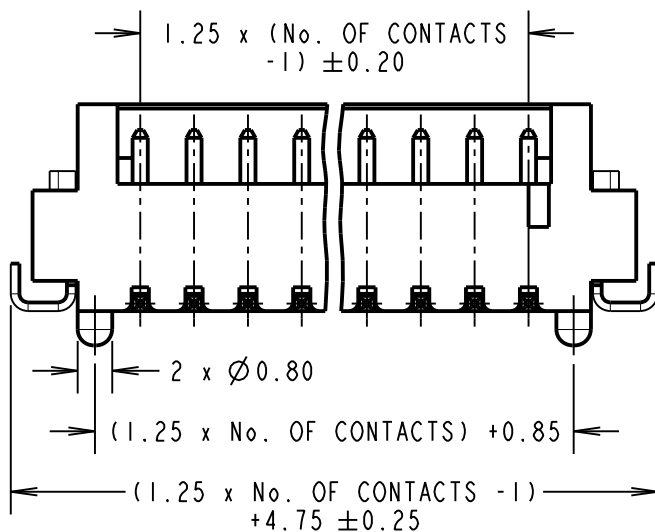
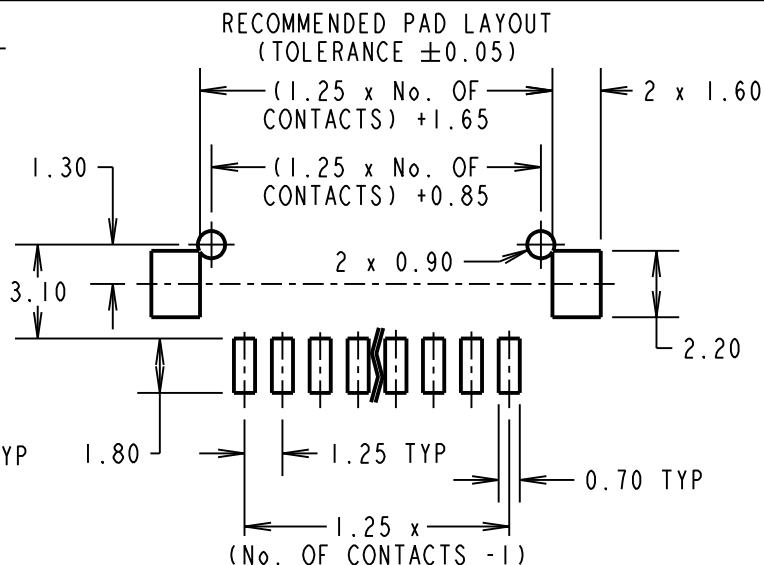
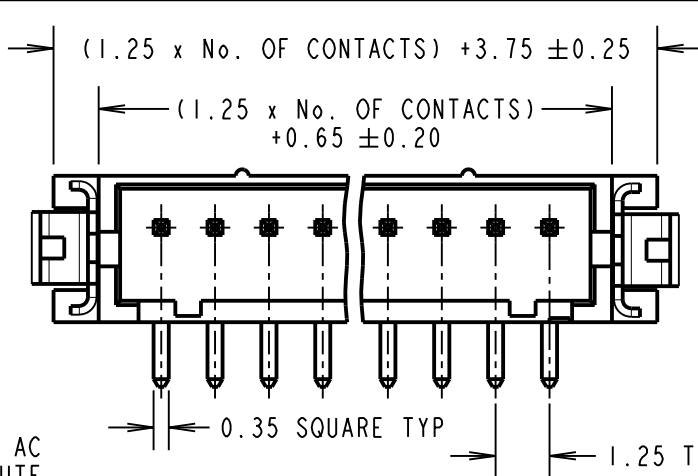
ENVIRONMENTAL:
 TEMPERATURE RANGE = -25° TO +85°C

PACKING: TUBE

FOR COMPLETE SPECIFICATION,
 SEE COMPONENT SPECIFICATION
 C025XX (LATEST ISSUE)

ORDER CODE:
M30-600XX46
 No. OF CONTACTS
 02 TO 15
 FINISH:
 46 = 100% TIN

- NOTES:**
- MATES WITH M30-1050046 AND M30-1060046 CRIMP CONTACTS, WITH M30-110XX00 CRIMP MOULDING.
 - COPLANARITY OF CONTACTS AND RETAINER TO BE 0.1mm MAX.



SB	12	17.09.12	11801
NAME	ISS.	DATE	C/NOTE
APPROVED: S.BENNETT			
CHECKED: S.FLOWER			
DRAWN: W.J.BOURNE			
CUSTOMER REF.:			
ASSEMBLY DRG:			

HARWIN

www.harwin.com
 technical@harwin.com

THIS DRAWING AND ANY INFORMATION OR DESCRIPTIVE MATTER SET OUT HEREON ARE CONFIDENTIAL AND COPYRIGHT PROPERTY OF THE HARWIN GROUP AND MUST NOT BE DISCLOSED, LOANED, COPIED OR USED FOR MANUFACTURING, TENDERING OR FOR ANY OTHER PURPOSE WITHOUT THEIR WRITTEN PERMISSION.

TOLERANCES
 X. = ± 1mm
 X.X = ± 0.25mm
 X.XX = ± 0.10mm
 X.XXX = ± 0.01mm
 ANGLES = ± 5°
 UNLESS STATED

MATERIAL:
 SEE ABOVE
FINISH: SEE ABOVE
S/AREA: mm²

TITLE:
 1.25mm PITCH SIL
 SMT BOARD MOUNT CONNECTOR

DRAWING NUMBER:
M30-600XX46

SHT
 2 OF 2