



Chipsmall Limited consists of a professional team with an average of over 10 year of expertise in the distribution of electronic components. Based in Hongkong, we have already established firm and mutual-benefit business relationships with customers from,Europe,America and south Asia,supplying obsolete and hard-to-find components to meet their specific needs.

With the principle of "Quality Parts,Customers Priority,Honest Operation,and Considerate Service",our business mainly focus on the distribution of electronic components. Line cards we deal with include Microchip,ALPS,ROHM,Xilinx,Pulse,ON,Everlight and Freescale. Main products comprise IC,Modules,Potentiometer,IC Socket,Relay,Connector.Our parts cover such applications as commercial,industrial, and automotives areas.

We are looking forward to setting up business relationship with you and hope to provide you with the best service and solution. Let us make a better world for our industry!



## Contact us

Tel: +86-755-8981 8866 Fax: +86-755-8427 6832

Email & Skype: info@chipsmall.com Web: www.chipsmall.com

Address: A1208, Overseas Decoration Building, #122 Zhenhua RD., Futian, Shenzhen, China



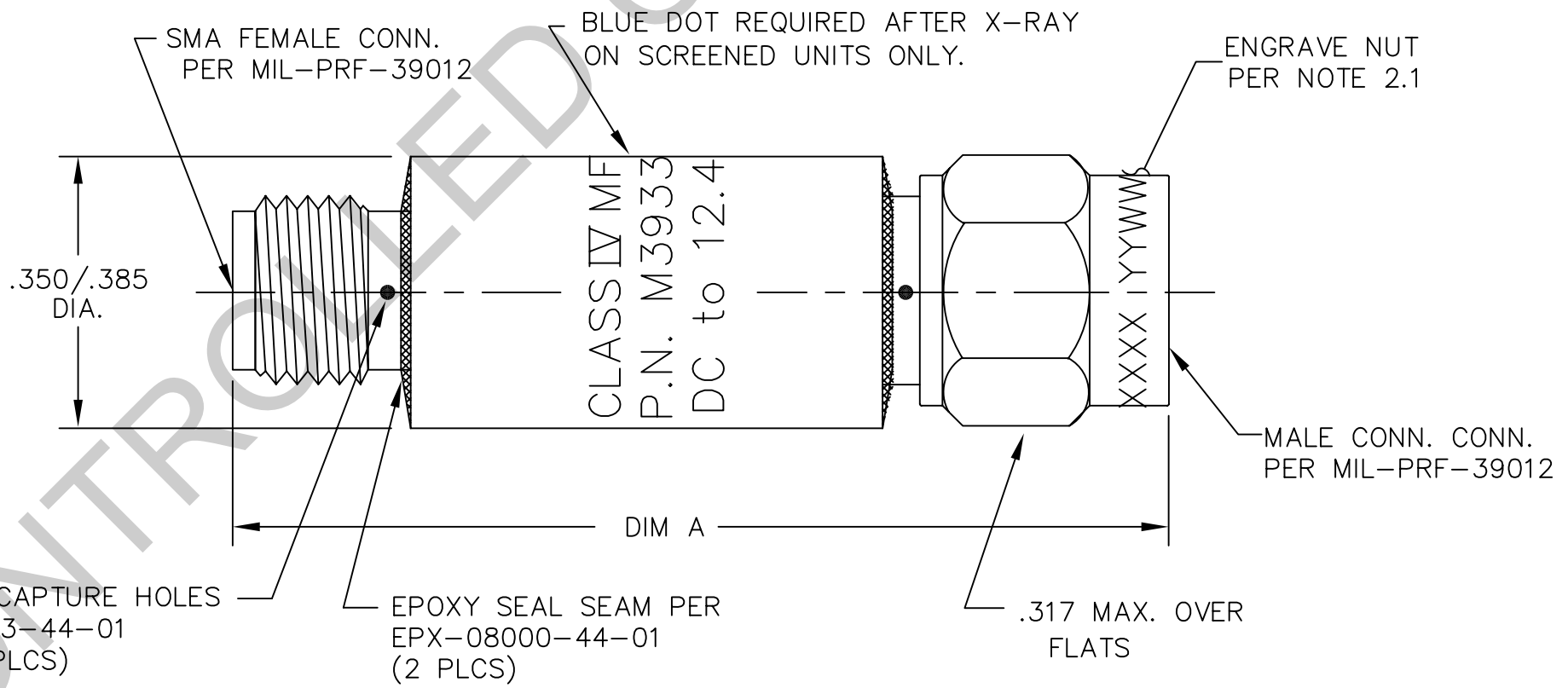
NOTES:

- 1.0 SPECIFICATIONS:  
 1.1 FREQUENCY RANGE: DC to 12.4  
 1.2 IMPEDANCE: 50 OHMS NOMINAL  
 1.3 VSWR MAX.:  
 DC to 4.0 GHz: 1.15:1  
 4.0 to 8.0 GHz: 1.20:1  
 8.0 to 12.4 GHz: 1.25:1  
 1.4 ATTENUATION & ACCURACY: SEE TABLE  
 1.5 MAXIMUM INPUT POWER  
 1.5.1 2 WATTS AVG. AT +25°C DERATED LINEARLY TO 0.5 WATTS AT +125°C  
 1.5.2 200 WATTS PEAK  
 1.6 OPERATING TEMP. RANGE:  
 -55°C to +125°C  
 1.7 WIEGHT: SEE TABLE

MMI MODEL NO.	ATTEN. (dB)	DEVIATION DC to 12.4 GHz	WEIGHT Oz. MAX.	DIM A MAX.	MMI MODEL NO.	ATTEN. (dB)	DEVIATION DC to 12.4 GHz	WEIGHT Oz. MAX.	DIM A MAX.
M3933/14-01	3	±0.3	0.5	1.24	M3933/14-11	8	±0.4	0.5	1.24
M3933/14-02	6	±0.3	0.5	1.24	M3933/14-12	9	±0.4	0.5	1.24
M3933/14-03	10	±0.3	0.5	1.24	M3933/14-13	30	±0.9	0.8	1.85
M3933/14-04	20	±0.5	0.5	1.24	M3933/14-14	40	±0.9	0.8	1.85
M3933/14-05	15	±0.5	0.5	1.24	M3933/14-17	28	±0.9	0.7	1.85
M3933/14-06	1	±0.3	0.5	1.24	M3933/14-18	16	±0.5	0.5	1.24
M3933/14-07	2	±0.3	0.5	1.24	M3933/14-19	14	±0.5	0.5	1.24
M3933/14-08	4	±0.3	0.5	1.24	M3933/14-20	13	±0.5	0.5	1.24
M3933/14-09	5	±0.3	0.5	1.24	M3933/14-21	12	±0.5	0.5	1.24
M3933/14-10	7	±0.4	0.5	1.24	M3933/14-22	11	±0.5	0.5	1.24
					M3933/14-23	1.5	±0.3	0.5	1.24
					M3933/14-24	31	±0.9	0.8	1.85

- 2.0 MARKING:  
 2.1 ENGRAVE SERIAL NO. AND DATE CODE ON NUT AS SHOWN.  
 2.2 MARK BODY AS SHOWN. (REF.: INK-09252-27-XX)

- 3.0 TESTING:  
 TEST IN CONJUNCTION WITH  
 ATP-07839-60-01 FOR SCREENED UNITS.  
 ATP-09210-60-01 FOR NON-SCREENED UNITS.



- 4.0 BAG MARKING:  
 SEE MODEL NO. FOR LAST 3 DIGITS  
 MODEL M3933/14-YYY  
 ATTENUATOR FIXED COAXIAL LINE  
 2 WATTS AVERAGE INPUT POWER  
 FREQ. RANGE: DC-12.4 GHz  
 MFR 34078  
 LOT NO. \_\_\_\_\_  
 DATE CODE: YYWW \_\_\_\_\_  
 YEAR & WEEK

UNLESS OTHERWISE NOTED DIMENSIONS ARE IN INCHES AND TOLERANCES ARE: 3 PLACE DECIMALS ±.005 2 PLACE DECIMALS ±.02 FRACTIONS ±1/64 PARALLELITY: T.I.R. _____ FLATNESS: T.I.R. _____ CONCENTRICITY: T.I.R. _____ ANGLES AND PERPENDICULARITY: ±1°	FSCM NO. <b>34078</b>	<b>MIDWEST MICROWAVE</b>	
	NOTICE: The information contained in this drawing is proprietary and must not be used without the permission of Midwest Microwave		TITLE ATTENUATOR
DRAWN/DATE A.BEATTY 4/8/94	ENG./DATE G.KOZAK 4/18/94	DRAWING NUMBER M3933/14-XX(N or S)	
CHECKED/DATE M.HOLLMAN 4/15/94	APPROVED/DATE	SCALE: 5=1	SHEET 1 of 1

DATE	5/30/89	11/15/90	1/16/91	1/30/91	1/25/93	4/8/94	1/16/95	2/3/99	12/12/02	3/10/06	8/17/07
DESCRIPTION	RELEASED	ECR 7780	ECR 7890	ECN 10218	UPDATE MOD. NO.	ECN 13483	ECN 14231	ECN 16967	ECN 18865	ECN 20764	ECN 21462
REV.	-	A	B	C	C1	D	E	F	G	H	J