



Chipsmall Limited consists of a professional team with an average of over 10 year of expertise in the distribution of electronic components. Based in Hongkong, we have already established firm and mutual-benefit business relationships with customers from,Europe,America and south Asia,supplying obsolete and hard-to-find components to meet their specific needs.

With the principle of "Quality Parts,Customers Priority,Honest Operation,and Considerate Service",our business mainly focus on the distribution of electronic components. Line cards we deal with include Microchip,ALPS,ROHM,Xilinx,Pulse,ON,Everlight and Freescale. Main products comprise IC,Modules,Potentiometer,IC Socket,Relay,Connector.Our parts cover such applications as commercial,industrial, and automotives areas.

We are looking forward to setting up business relationship with you and hope to provide you with the best service and solution. Let us make a better world for our industry!



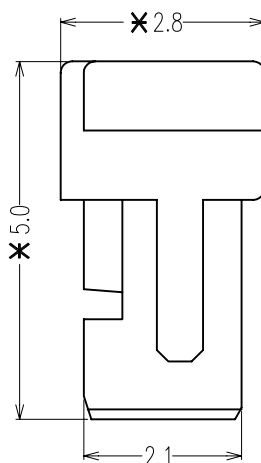
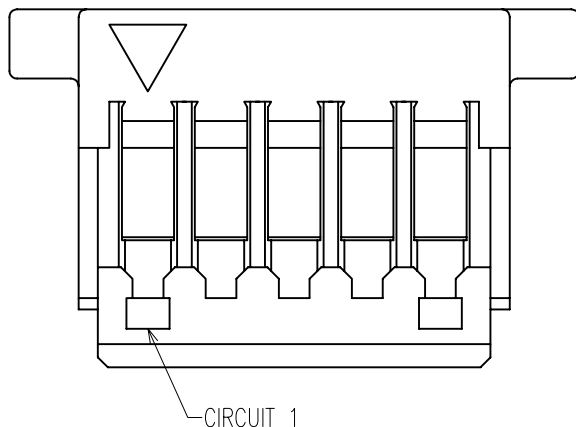
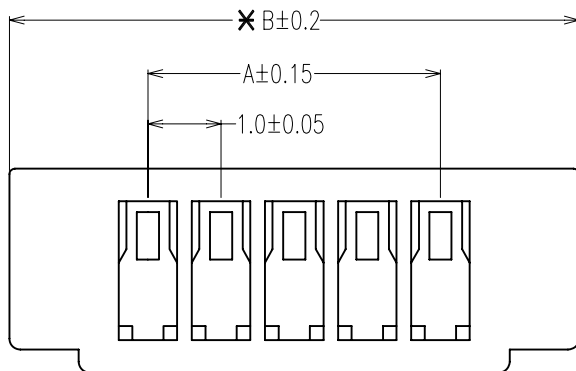
Contact us

Tel: +86-755-8981 8866 Fax: +86-755-8427 6832

Email & Skype: info@chipsmall.com Web: www.chipsmall.com

Address: A1208, Overseas Decoration Building, #122 Zhenhua RD., Futian, Shenzhen, China





NO. OF WAYS	PART NO.	DIM (mm)	
		A	B
2	M40-110 02 00	1.00	5.00
3	M40-110 03 00	2.00	6.00
4	M40-110 04 00	3.00	7.00
5	M40-110 05 00	4.00	8.00
6	M40-110 06 00	5.00	9.00
7	M40-110 07 00	6.00	10.00
8	M40-110 08 00	7.00	11.00
9	M40-110 09 00	8.00	12.00
10	M40-110 10 00	9.00	13.00
11	M40-110 11 00	10.00	14.00

NO. OF WAYS	PART NO.	DIM (mm)	
		A	B
12	M40-110 12 00	11.00	15.00
13	M40-110 13 00	12.00	16.00
14	M40-110 14 00	13.00	17.00
15	M40-110 15 00	14.00	18.00
16	M40-110 16 00	15.00	19.00
*17	M40-110 17 00	16.00	20.00
*18	M40-110 18 00	17.00	21.00
*19	M40-110 19 00	18.00	22.00
20	M40-110 20 00	19.00	23.00

PLS NOTE: FOR PART NO. WITH * . PLEASE CHECK WITH TECHNICAL SALES FOR AVAILABILITY

SPECIFICATIONS:

MATERIAL:-

MOULDING: P.B.T UL94V-0

ELECTRICAL:-

CURRENT RATING: 1A AC/DC

VOLTAGE RATING: 50V AC/DC

WITHSTAND VOLTAGE: 500V AC/MINUTE

CONTACT RESISTANCE: 20 mΩ MAX.

INSULATION RESISTANCE: 100 MΩ MIN.

ENVIRONMENTAL:-

TEMPERATURE RANGE: -25°C TO +85°C

OTHERS:-

AVAILABLE NO. OF WAYS: 2 TO 20

NOTES: ALL DIMENSIONS AND NOTES MARKED * ARE CRITICAL AND MUST BE CHECKED IN ACCORDANCE WITH QUALITY DOC. Q1-02A

Allan	2	05.11.07	A090
Allan	1	01.08.06	-
NAME	ISS.	DATE	C/NOTE

APPROVED:

CHECKED:

DRAWN: Allan

CUSTOMER REF.:

ASSEMBLY DRG:

TOLERANCES

X.X = ±0.25mm

X.XX = ±0.15mm

X.XXX = ±0.08mm



NOTES:

TO BE USED WITH TERMINALS

M40-1000046 AND M40-900 TO M40-907

ORDER CODE

M40-110 XX 00

NO. OF WAYS

HARWIN

HARWIN USA
TEL: 603 893 5376
FAX: 603 893 5396
mis@harwin.com

HARWIN Europe (UK)
TEL: 023 9231 4545
FAX: 023 9231 4590
mis@harwin.co.uk

HARWIN Asia
TEL: +65 6 779 4909
FAX: +65 6 779 3868
mis@harwin.com.sg

THIS DRAWING AND ANY INFORMATION OR DESCRIPTIVE MATTER SET OUT HEREON ARE CONFIDENTIAL AND COPYRIGHT PROPERTY OF THE HARWIN GROUP AND MUST NOT BE DISCLOSED, LOANED, COPIED OR USED FOR MANUFACTURING, TENDERING OR FOR ANY OTHER PURPOSE WITHOUT THEIR WRITTEN PERMISSION.

TOLERANCES

X. = ±1mm

X.X = ±0.25mm

X.XX = ±0.10mm

X.XXX = ±0.01mm

ANGLES = ±5°

UNLESS STATED

MATERIAL:

SEE NOTES

FINISH:

SEE NOTES

S/AREA:

mm²

TITLE:

1.00mm PITCH WIRE TO BOARD CONNECTOR

DRAWING NUMBER:

M40-110 XX 00

SHT
1
OF
1