



Chipsmall Limited consists of a professional team with an average of over 10 year of expertise in the distribution of electronic components. Based in Hongkong, we have already established firm and mutual-benefit business relationships with customers from,Europe,America and south Asia,supplying obsolete and hard-to-find components to meet their specific needs.

With the principle of “Quality Parts,Customers Priority,Honest Operation,and Considerate Service”,our business mainly focus on the distribution of electronic components. Line cards we deal with include Microchip,ALPS,ROHM,Xilinx,Pulse,ON,Everlight and Freescale. Main products comprise IC,Modules,Potentiometer,IC Socket,Relay,Connector.Our parts cover such applications as commercial,industrial, and automotives areas.

We are looking forward to setting up business relationship with you and hope to provide you with the best service and solution. Let us make a better world for our industry!



Contact us

Tel: +86-755-8981 8866 Fax: +86-755-8427 6832

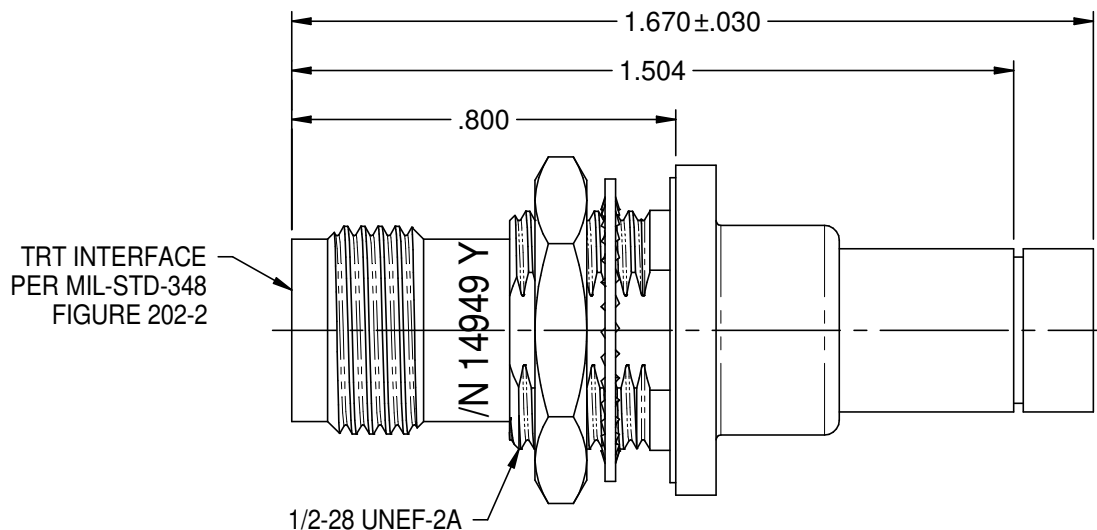
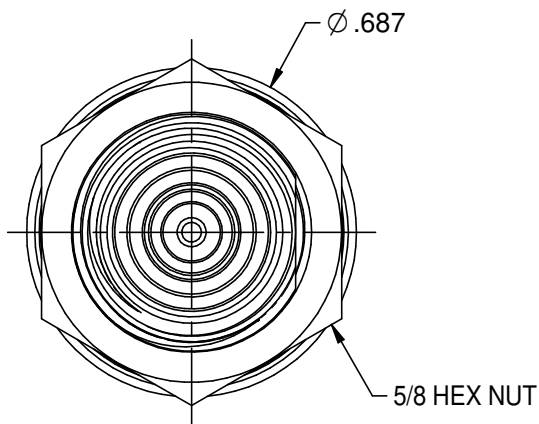
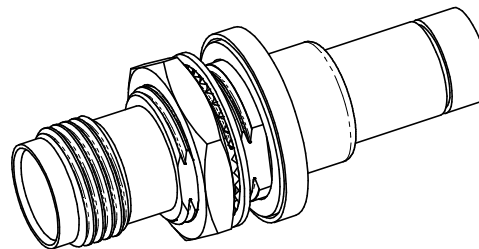
Email & Skype: info@chipsmall.com Web: www.chipsmall.com

Address: A1208, Overseas Decoration Building, #122 Zhenhua RD., Futian, Shenzhen, China



TABLE 1				
MILITARY PART NO.	MILITARY CABLE NO.	NSN	TROMPETER MODEL NO.	ASSEMBLE PER
M49142/09-0016	M17/45-RG108	-	3-0341-1	TAI-206
M49142/09-0017	M17/176-00002	5935015084556	3-0341-2	

REV	ECO	DATE
B	55164	9/5/2014



3-0341-1 SHOWN

NOTES: UNLESS OTHERWISE SPECIFIED.

1. MATERIAL & FINISH:

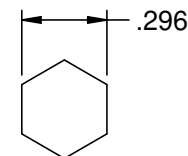
- 1.1 BODY, CRIMP FERRULE, CRIMP SLEEVE & INSERT: SILVER PLATED BRASS
- 1.2 INSULATOR: PTFE (TEFLON)
- 1.3 INTERMEDIATE CONTACT: GOLD PLATED BRASS
- 1.4 DIELECTRIC: PTFE (TEFLON)
- 1.5 CENTER CONTACT: GOLD PLATED BERYLLIUM COPPER
- 1.6 GASKET: SILICONE RUBBER
- 1.7 MOUNTING HARDWARE: SILVER PLATER BRASS ALLOY

2. ELECTRICAL:

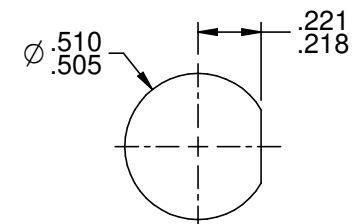
- 2.1 FREQUENCY (MAX): 500 MHz
- 2.2 IMPEDANCE: NON-CONSISTENT

3. PANEL THICKNESS (MAX): .109

4. PANEL NUT TORQUE (MAX): 35 IN LBS



RECOMMENDED
HEX CRIMP



RECOMMENDED
PANEL CUTOUT

<p>This PROPRIETARY Document is property of Cinch Connectivity Solutions. It is confidential in nature, non-transferable, and issued with the clear understanding that it is not to be copied without permission and is returnable upon demand.</p> <p>INTERPRET DRAWING IN ACCORDANCE WITH ASME Y14.5-2009.</p>	Model No.	3-0341-X		TROMPETER			
	Cage Code	14949				Title:	M49142/09 TOOL CRIMP TRT JACK
	RoHS2	2011/65/EU	3RD ANGLE PROJECTION	Drawing No.		Rev.	
	UNLESS OTHERWISE SPECIFIED: UNITS: INCH		Drawn by:	C. WALLACE		B	
ANGLES ±2°		Date:	9/10/2014	Size A	DO NOT SCALE DRAWING	Workmanship Std: TFS-4	Sheet 1 of 1