



Chipsmall Limited consists of a professional team with an average of over 10 year of expertise in the distribution of electronic components. Based in Hongkong, we have already established firm and mutual-benefit business relationships with customers from,Europe,America and south Asia,supplying obsolete and hard-to-find components to meet their specific needs.

With the principle of “Quality Parts,Customers Priority,Honest Operation,and Considerate Service”,our business mainly focus on the distribution of electronic components. Line cards we deal with include Microchip,ALPS,ROHM,Xilinx,Pulse,ON,Everlight and Freescale. Main products comprise IC,Modules,Potentiometer,IC Socket,Relay,Connector.Our parts cover such applications as commercial,industrial, and automotives areas.

We are looking forward to setting up business relationship with you and hope to provide you with the best service and solution. Let us make a better world for our industry!



Contact us

Tel: +86-755-8981 8866 Fax: +86-755-8427 6832

Email & Skype: info@chipsmall.com Web: www.chipsmall.com

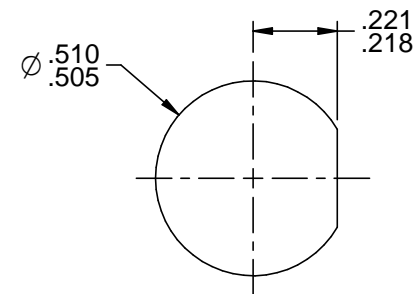
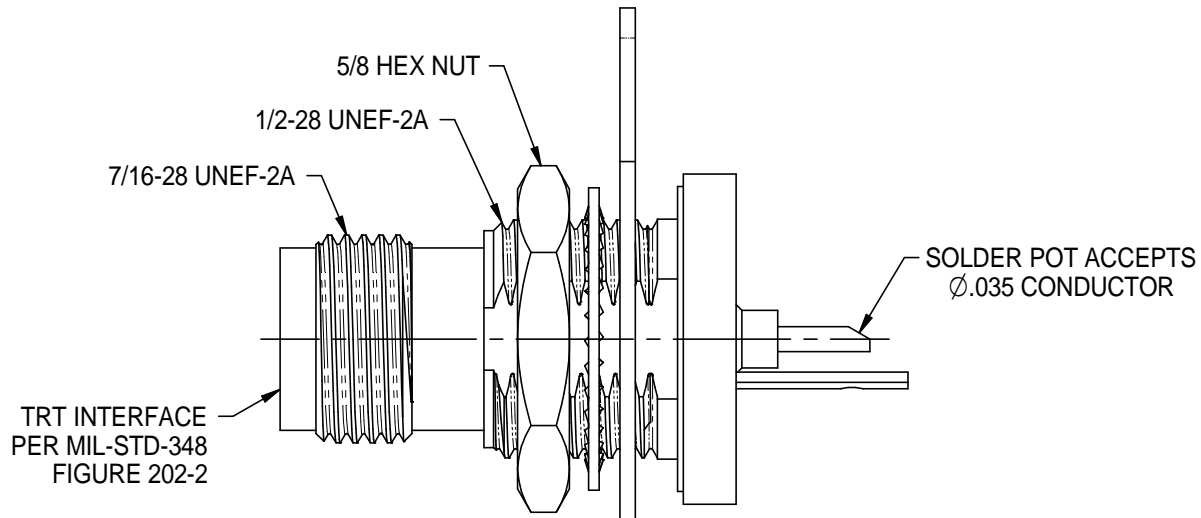
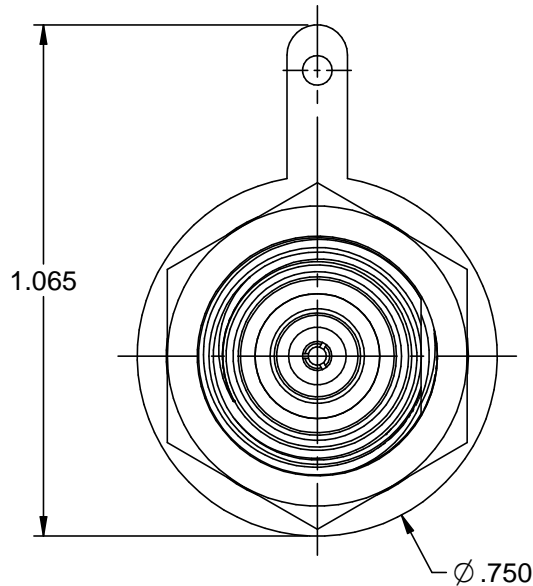
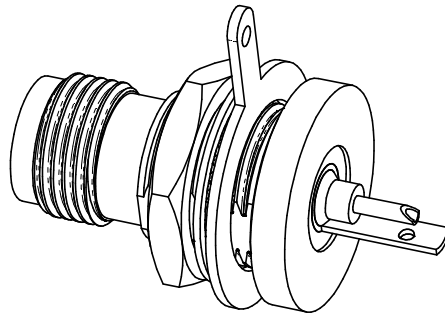
Address: A1208, Overseas Decoration Building, #122 Zhenhua RD., Futian, Shenzhen, China



TABLE 1

| MILITARY PART NO. | TROMPETER MODEL NO. | NSN |
|-------------------|---------------------|---------------|
| M42142/10-0001 | 3-0334 | 5935013794391 |

| REV | ECO | DATE |
|-----|-------|------------|
| J | 52839 | 12/28/2010 |
| K | 55161 | 9/5/2014 |



**RECOMMENDED
PANEL CUTOUT**

NOTES: UNLESS OTHERWISE SPECIFIED.

1. MATERIAL & FINISH:
 - 1.1 BODY: SILVER PLATED BRASS
 - 1.2 INSULATOR: PTFE (TEFLON)
 - 1.3 INTERMEDIATE CONTACT: GOLD PLATED BRASS
 - 1.4 DIELECTRIC: PTFE (TEFLON)
 - 1.5 CENTER CONTACT: GOLD PLATED BERYLLIUM COPPER
 - 1.6 GASKET: SILICONE RUBBER
 - 1.7 MOUNTING HARDWARE: SILVER PLATED BRASS ALLOY
2. ELECTRICAL:
 - 2.1 FREQUENCY (MAX): 500 MHz
 - 2.2 IMPEDANCE: NON-CONSISTENT
3. PANEL THICKNESS (MAX):
4. PANEL NUT TORQUE (MAX): 35 IN LBS

| | | | | | | | |
|---|--------------------------------|--|---|------------------|---|----------------------------------|--------------|
| <p>EMERSON Network Power Connectivity Solutions</p> <p><small>This PROPRIETARY Document is property of Emerson Network Power Connectivity Solutions. It is confidential in nature, non-transferable, and issued with the clear understanding that it is not traced or copied without permission and is returnable upon demand.</small></p> <p><small>INTERPRET DRAWING IN ACCORDANCE WITH ASME Y14.5-2009.</small></p> | Model No. | 3-0334 | <p>TROMPETER</p> <p>Title: M49142/10-0001 SOLDER POT BULKHEAD TRT JACK</p> | | | | |
| | RoHS2 | <input checked="" type="checkbox"/> 2011/65/EU UNLESS OTHERWISE SPECIFIED UNITS: INCH .XX ±.02 .XXX ±.005 ANGLES ±2° | | | Cage Code 14949 3RD ANGLE PROJECTION | Drawing No. | Rev. |
| | Drawn by: C. WALLACE | | Date: 9/8/2014 | Size A | DO NOT SCALE DRAWING | Workmanship Std: TFS-4 | Sheet 1 of 1 |
| | Drawing No. 3-0334 | | Rev. K | | | | |