



Chipsmall Limited consists of a professional team with an average of over 10 year of expertise in the distribution of electronic components. Based in Hongkong, we have already established firm and mutual-benefit business relationships with customers from,Europe,America and south Asia,supplying obsolete and hard-to-find components to meet their specific needs.

With the principle of “Quality Parts,Customers Priority,Honest Operation,and Considerate Service”,our business mainly focus on the distribution of electronic components. Line cards we deal with include Microchip,ALPS,ROHM,Xilinx,Pulse,ON,Everlight and Freescale. Main products comprise IC,Modules,Potentiometer,IC Socket,Relay,Connector.Our parts cover such applications as commercial,industrial, and automotives areas.

We are looking forward to setting up business relationship with you and hope to provide you with the best service and solution. Let us make a better world for our industry!



Contact us

Tel: +86-755-8981 8866 Fax: +86-755-8427 6832

Email & Skype: info@chipsmall.com Web: www.chipsmall.com

Address: A1208, Overseas Decoration Building, #122 Zhenhua RD., Futian, Shenzhen, China



Customer Information Sheet

DRAWING No.: M50-315XX42R

SHEET 3 OF 4

IF IN DOUBT - ASK

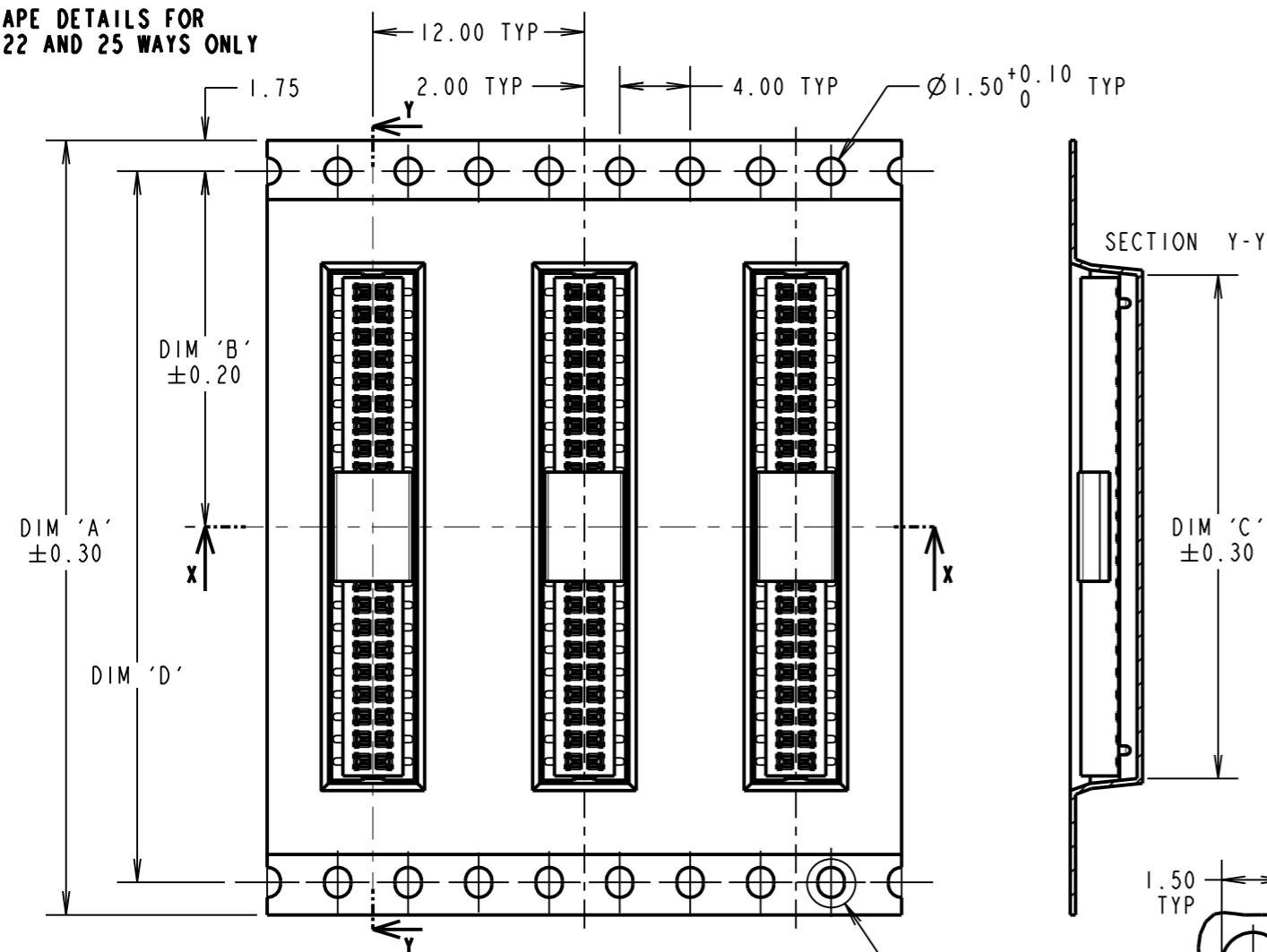
©

NOT TO SCALE

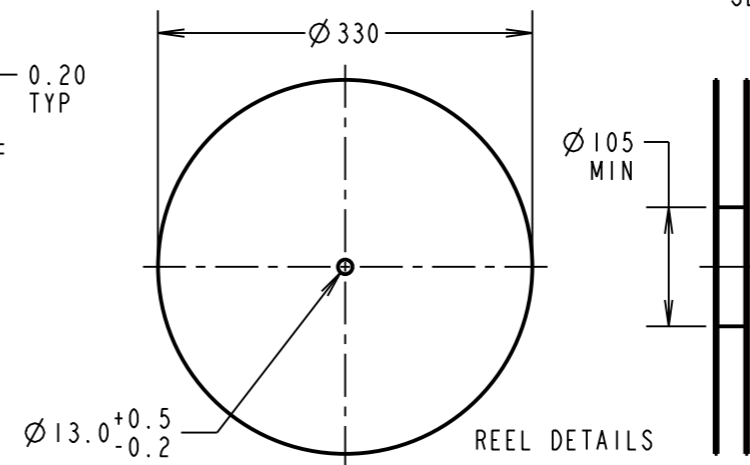
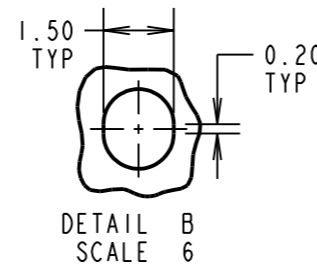
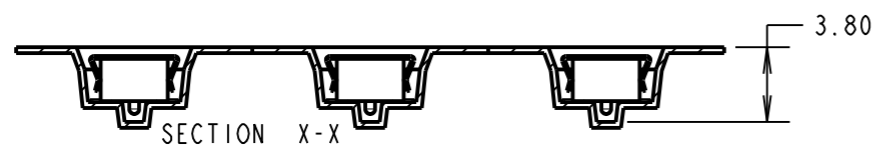
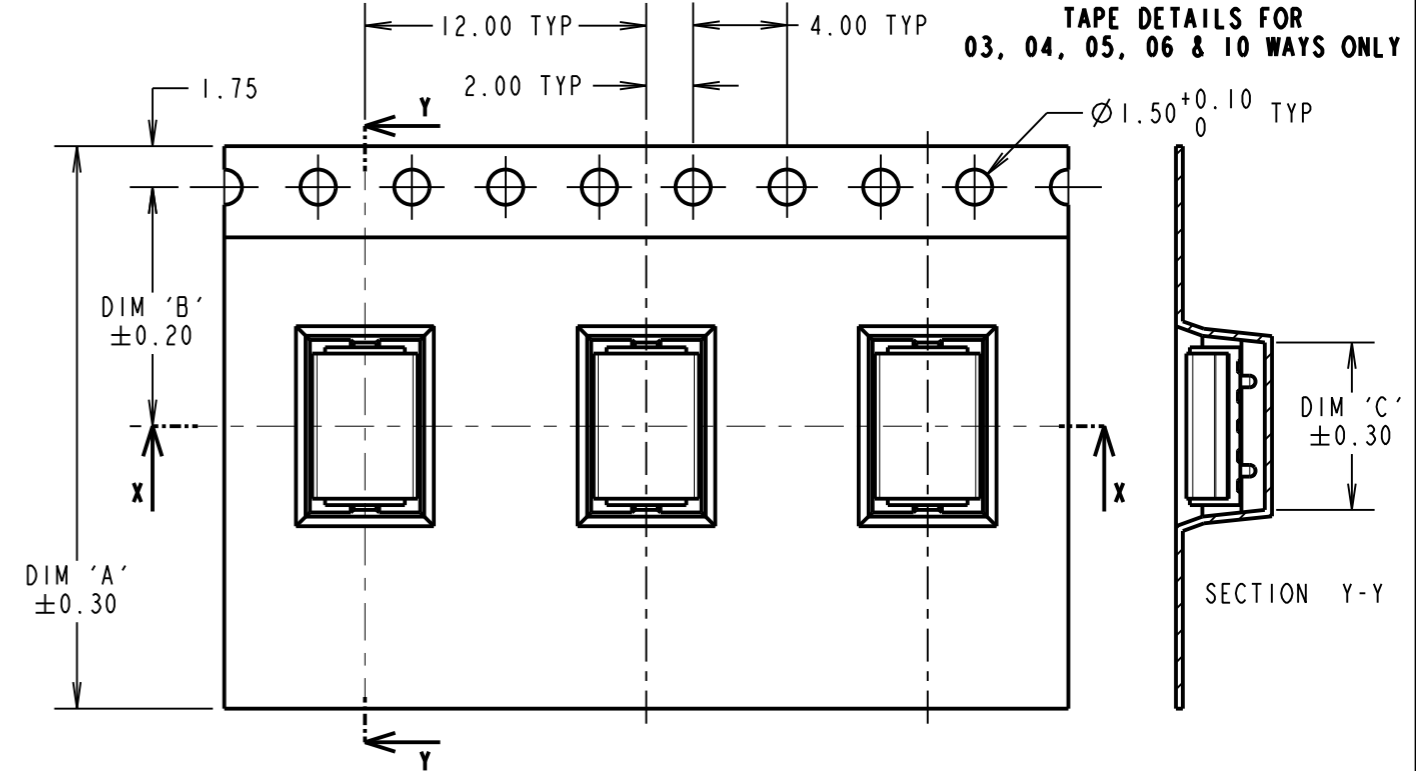
THIRD ANGLE PROJECTION

ALL DIMENSIONS IN mm

**TAPE DETAILS FOR
20, 22 AND 25 WAYS ONLY**



**TAPE DETAILS FOR
03, 04, 05, 06 & 10 WAYS ONLY**

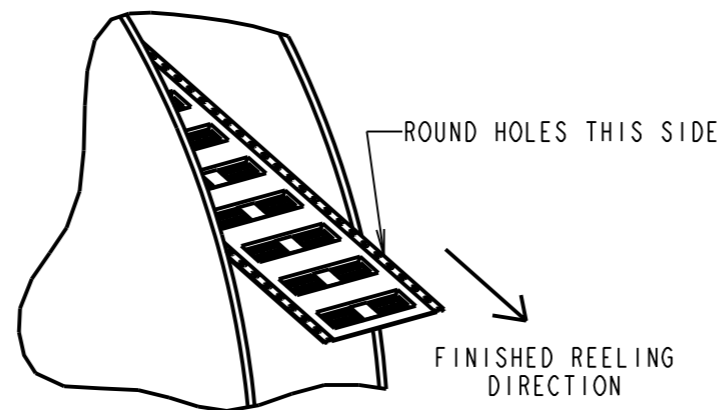


ORDER CODE: **M50-315XX42R**

No. OF CONTACTS PER ROW:
03, 04, 05, 06,
10, 20, 22, 25

FINISH:
42 = GOLD FLASH + 100% TIN OVER NICKEL

REELED PART No.	DIM 'A'	DIM 'B'	DIM 'C'	DIM 'D'	PACK SIZE
M50-3150342R	16.00	7.50	4.55	N/A	1400
M50-3150442R	16.00	7.50	5.78		1400
M50-3150542R	16.00	7.50	7.15		1400
M50-3150642R	24.00	10.20	8.30		1300
M50-3151042R	24.00	11.50	13.40		1400
M50-3152042R	44.00	20.20	26.10	40.40	1400
M50-3152242R	44.00	20.20	28.60	40.40	1300
M50-3152542R	44.00	20.20	32.45	40.40	1300



- NOTES:
- PRODUCT IS TAPE AND REELED IN GENERAL ACCORDANCE WITH EIA-481 (ELECTRONIC INDUSTRIES ASSOCIATION).
 - CUMULATIVE TOLERANCE OVER 10 PITCHES = ±0.20mm
 - FOR CONNECTOR DETAILS AND SPECIFICATIONS SEE SHEET 4.

MSP	8	10.08.16	13112
NAME	ISS.	DATE	C/NOTE
APPROVED:		M.PERREN	
CHECKED:		S.BENNETT	
DRAWN:		R.ADE	
CUSTOMER REF.:			
ASSEMBLY DRG.:			

HARWIN

www.harwin.com
technical@harwin.com

THIS DRAWING AND ANY INFORMATION OR DESCRIPTIVE MATTER SET OUT HEREON ARE CONFIDENTIAL AND COPYRIGHT PROPERTY OF THE HARWIN GROUP AND MUST NOT BE DISCLOSED, LOANED, COPIED OR USED FOR MANUFACTURING, TENDERING OR FOR ANY OTHER PURPOSE WITHOUT THEIR WRITTEN PERMISSION.

TOLERANCES
X. = ±1mm
X.X = ±0.50mm
X.XX = ±0.10mm
X.XXX = ±0.01mm
ANGLES = ±5°
UNLESS STATED

MATERIAL: SEE SHEET 4
FINISH: SEE ABOVE
S/AREA: mm²

TITLE: 1.27mm PITCH DIL SMT VERT LOW PROFILE SOCKET ASSY (TAPE & REEL)

DRAWING NUMBER: **M50-315XX42R** SHT 3 OF 4

Customer Information Sheet

DRAWING No.: M50-315XX42R

SHEET 4 OF 4

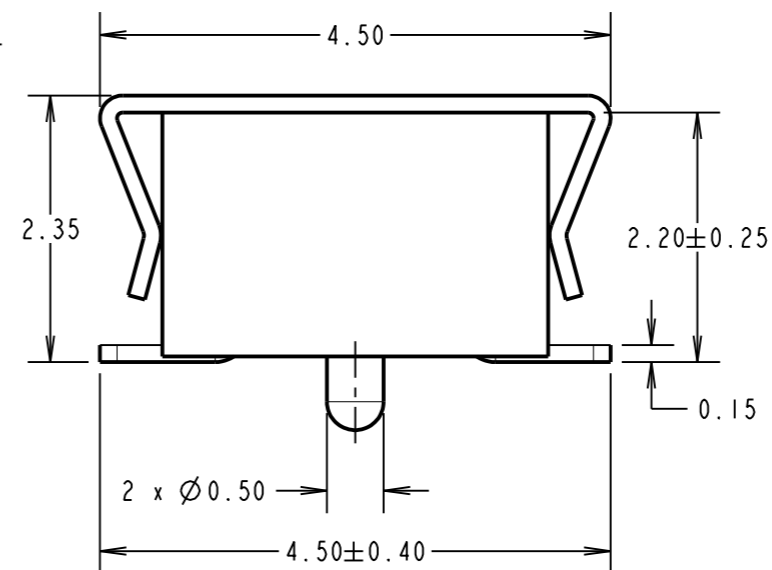
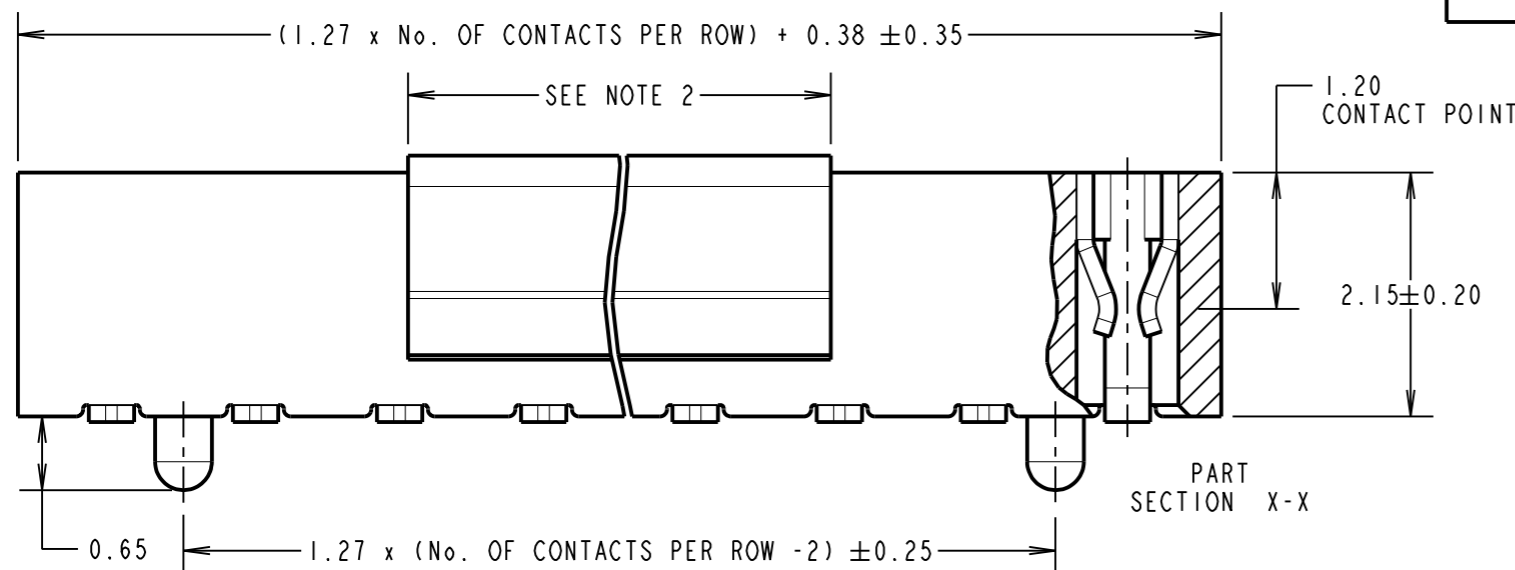
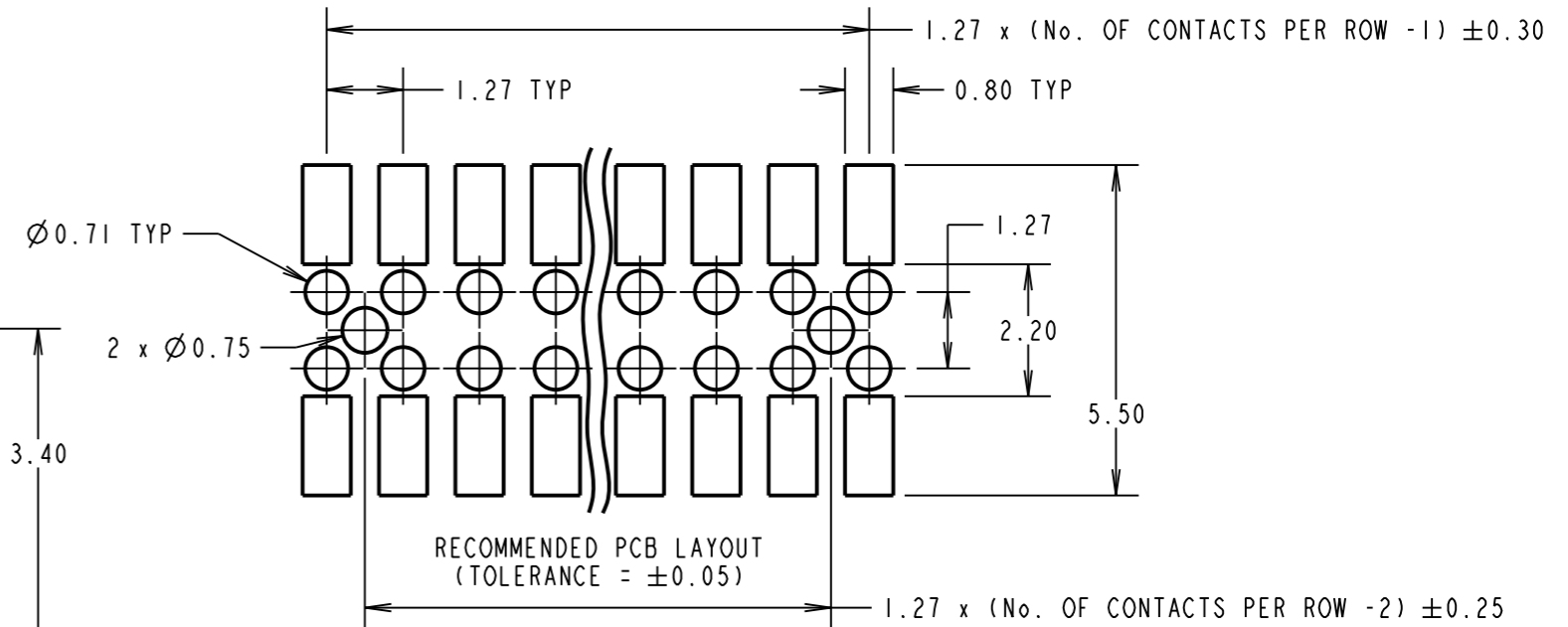
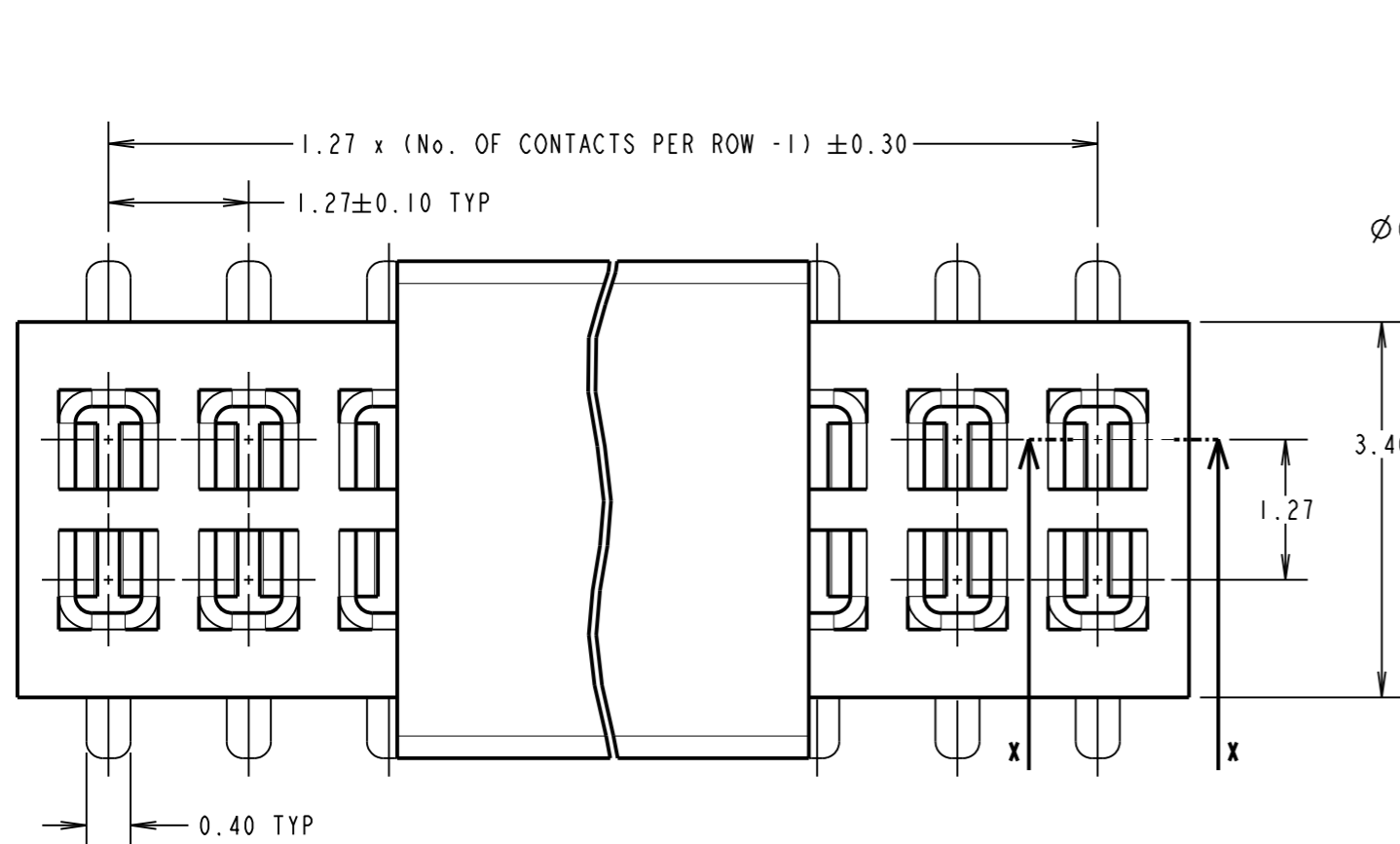
IF IN DOUBT - ASK

©

NOT TO SCALE

THIRD ANGLE PROJECTION

ALL DIMENSIONS IN mm



ORDER CODE:
M50-315XX42R
 No. OF CONTACTS PER ROW:
 03, 04, 05, 06,
 10, 20, 22, 25
 FINISH:
 42 = GOLD FLASH + 100% TIN OVER NICKEL

SPECIFICATION:

MATERIAL:
 MOULDING = NYLON-6T, UL94V-0, BLACK
 CONTACTS = PHOSPHOR BRONZE
FINISH:
 CONTACTS = 1.27μ NICKEL ALL OVER,
 GOLD FLASH ON CONTACT AREA,
 2.54μ 100% TIN ON TAILS

ELECTRICAL:
 CURRENT RATING = 1A
 CONTACT RESISTANCE = $20m\Omega$ MAX
 INSULATION RESISTANCE = $1000M\Omega$ MIN
 DIELECTRIC WITHSTANDING = 500V AC FOR ONE MINUTE

MECHANICAL:
 DURABILITY = 300 CYCLES MIN
 INSERTION FORCE = 1.5N MAX PER CONTACT
 WITHDRAWAL FORCE = 0.2N MIN PER CONTACT

ENVIRONMENTAL:
 TEMPERATURE RANGE = -40°C TO $+105^{\circ}\text{C}$
PACKING:
 REEL
 FOR COMPLETE SPECIFICATION, SEE COMPONENT SPECIFICATION C029XX (LATEST ISSUE)

MSP	8	10.08.16	13112
NAME	ISS.	DATE	C/NOTE
APPROVED: M.PERREN			
CHECKED: S.BENNETT			
DRAWN: R.ADDE			
CUSTOMER REF.:			
ASSEMBLY DRG:			

- NOTE:
 1. ALL TOLERANCES ARE ± 0.15 UNLESS OTHERWISE STATED.
 2. PICK AND PLACE CAP LENGTH = 4.20mm FOR 03 TO 05 CONTACTS PER ROW,
 6.90mm FOR 06 TO 40 CONTACTS PER ROW.
 3. FOR TAPE AND REEL DETAILS, SEE SHEET 3.

HARWIN

www.harwin.com
 technical@harwin.com

THIS DRAWING AND ANY INFORMATION OR DESCRIPTIVE MATTER SET OUT HEREON ARE CONFIDENTIAL AND COPYRIGHT PROPERTY OF THE HARWIN GROUP AND MUST NOT BE DISCLOSED, LOANED, COPIED OR USED FOR MANUFACTURING, TENDERING OR FOR ANY OTHER PURPOSE WITHOUT THEIR WRITTEN PERMISSION.

TOLERANCES
~~X = ± 1 mm~~
~~X.X = ± 0.50 mm~~
~~X.XX = ± 0.10 mm~~
~~X.XXX = ± 0.01 mm~~
 ANGLES = $\pm 5^{\circ}$
 UNLESS STATED

MATERIAL:
 SEE ABOVE
FINISH: SEE ABOVE
S/AREA: mm²

TITLE: 1.27mm PITCH DIL SMT VERT LOW PROFILE SOCKET ASSY (TAPE & REEL)

DRAWING NUMBER: M50-315XX42R
 SHT 4 OF 4