



Chipsmall Limited consists of a professional team with an average of over 10 year of expertise in the distribution of electronic components. Based in Hongkong, we have already established firm and mutual-benefit business relationships with customers from,Europe,America and south Asia,supplying obsolete and hard-to-find components to meet their specific needs.

With the principle of “Quality Parts,Customers Priority,Honest Operation,and Considerate Service”,our business mainly focus on the distribution of electronic components. Line cards we deal with include Microchip,ALPS,ROHM,Xilinx,Pulse,ON,Everlight and Freescale. Main products comprise IC,Modules,Potentiometer,IC Socket,Relay,Connector.Our parts cover such applications as commercial,industrial, and automotives areas.

We are looking forward to setting up business relationship with you and hope to provide you with the best service and solution. Let us make a better world for our industry!



Contact us

Tel: +86-755-8981 8866 Fax: +86-755-8427 6832

Email & Skype: info@chipsmall.com Web: www.chipsmall.com

Address: A1208, Overseas Decoration Building, #122 Zhenhua RD., Futian, Shenzhen, China



M68ICS05BOM/D

May 1998

**M68ICS05B
HC705B IN-CIRCUIT SIMULATOR
OPERATOR'S MANUAL**

Important Notice to Users

While every effort has been made to ensure the accuracy of all information in this document, Motorola assumes no liability to any party for any loss or damage caused by errors or omissions or by statements of any kind in this document, its updates, supplements, or special editions, whether such errors are omissions or statements resulting from negligence, accident, or any other cause. Motorola further assumes no liability arising out of the application or use of any information, product, or system described herein; nor any liability for incidental or consequential damages arising from the use of this document. Motorola disclaims all warranties regarding the information contained herein, whether expressed, implied, or statutory, *including implied warranties of merchantability or fitness for a particular purpose*. Motorola makes no representation that the interconnection of products in the manner described herein will not infringe on existing or future patent rights, nor do the descriptions contained herein imply the granting or license to make, use or sell equipment constructed in accordance with this description.

Trademarks

This document includes these trademarks:

Motorola and the Motorola logo are registered trademarks of Motorola Inc.

IBM is a registered trademark of IBM Corporation.

Windows is a registered trademark of Microsoft Corporation.

CASM05W, ICS05BW, and WinIDE software are © P & E Microcomputer Systems, Inc, 1996; all rights reserved.

Motorola Inc. is an Equal Opportunity /Affirmative Action Employer.

TABLE OF CONTENTS

CHAPTER 1 INTRODUCTION

1.1 OVERVIEW.....	1-1
1.2 TOOLKIT COMPONENTS.....	1-1
1.3 HARDWARE AND SOFTWARE REQUIREMENTS.....	1-2
1.4 TOOLKIT FEATURES.....	1-2
1.5 SPECIFICATIONS	1-3
1.6 ABOUT THIS USER'S MANUAL.....	1-3
1.7 QUICK START INSTRUCTIONS.....	1-4

CHAPTER 2 POD INSTALLATION

2.1 OVERVIEW.....	2-1
2.2 INSTALLING THE M68ICS05B POD.....	2-1

CHAPTER 3 SOFTWARE INSTALLATION AND INITIALIZATION

3.1 OVERVIEW.....	3-1
3.2 THE ICS05BW SOFTWARE COMPONENTS.....	3-1
3.2.1 The WinIDE Editor	3-1
3.2.2 CASM05W.....	3-1
3.2.3 ICS05BW	3-2
3.3 INSTALLING THE ICS05BW SOFTWARE.....	3-2
3.3.1 Installation Steps	3-2
3.3.2 Starting the ICS05BW Software	3-3
3.3.3 ICS Communication.....	3-3

CHAPTER 4 THE WinIDE USER INTERFACE

4.1 OVERVIEW.....	4-1
4.2 THE WINDOWS INTEGRATED DEVELOPMENT ENVIRONMENT.....	4-1
4.3 WinIDE MAIN WINDOW	4-2
4.3.1 Main Window Functions.....	4-2
4.3.2 Main Window Components	4-2

CHAPTER 4 THE WinIDE USER INTERFACE (continued)

4.4 GETTING STARTED.....	4-3
4.4.1 Prerequisites for Starting the WinIDE Editor.....	4-3
4.4.2 Starting the WinIDE Editor.....	4-4
4.4.3 Opening Source Files	4-4
4.4.4 Navigating in the WinIDE Editor.....	4-4
4.4.5 Using Markers	4-5
4.5 COMMAND-LINE PARAMETERS.....	4-6
4.6 WinIDE TOOLBAR.....	4-7
4.7 WinIDE MENUS	4-9
4.8 WinIDE FILE OPTIONS	4-11
4.8.1 New File	4-11
4.8.2 Open File	4-12
4.8.3 Save File.....	4-12
4.8.4 Save File As.....	4-12
4.8.5 Close File.....	4-13
4.8.6 Print File.....	4-13
4.8.7 Print Setup	4-14
4.8.8 Exit	4-14
4.9 WinIDE EDIT OPTIONS.....	4-14
4.9.1 Undo	4-14
4.9.2 Redo	4-15
4.9.3 Cut	4-15
4.9.4 Copy	4-15
4.9.5 Paste	4-16
4.9.6 Delete.....	4-16
4.9.7 Select All	4-16
4.10 WinIDE ENVIRONMENT OPTIONS	4-16
4.10.1 Open Project.....	4-17
4.10.2 Save Project.....	4-18
4.10.3 Save Project As	4-18
4.10.4 Close/New Project.....	4-18
4.10.5 Setup Environment.....	4-18
4.10.5.1 The General Environment Tab.....	4-19
4.10.5.2 General Editor Tab	4-20
4.10.5.3 Assembler/Compiler Tab	4-22
4.10.5.4 Executable 1 (Debugger) and Executable 2 (Programmer) Tab.....	4-26
4.10.6 Setup Fonts.....	4-28

CHAPTER 4 THE WinIDE USER INTERFACE (continued)

4.11 WinIDE SEARCH OPTIONS.....	4-29
4.11.1 Find.....	4-29
4.11.2 Replace.....	4-30
4.11.3 Find Next.....	4-31
4.11.4 Go to Line.....	4-31
4.12 WinIDE WINDOW OPTIONS.....	4-31
4.12.1 Cascade.....	4-32
4.12.2 Tile.....	4-33
4.12.3 Arrange Icons.....	4-34
4.12.4 Minimize All.....	4-35
4.12.5 Split.....	4-36

CHAPTER 5 ASSEMBLER INTERFACE

5.1 OVERVIEW.....	5-1
5.2 CASM05WASSEMBLER USER INTERFACE.....	5-2
5.2.1 Passing Command Line Parameters to the Assembler in Windows 3.x.....	5-3
5.2.2 Passing Command Line Parameters to the Assembler in Windows 95.....	5-4
5.3 ASSEMBLER PARAMETERS.....	5-4
5.4 ASSEMBLER OUTPUTS.....	5-5
5.4.1 Object Files.....	5-5
5.4.2 Map Files.....	5-6
5.4.3 Listing Files.....	5-6
5.4.4 Files from Other Assemblers.....	5-6
5.5 ASSEMBLER OPTIONS.....	5-7
5.5.1 Operands and Constants.....	5-7
5.5.2 Comments.....	5-8
5.6 ASSEMBLER DIRECTIVES.....	5-8
5.6.1 BASE.....	5-8
5.6.2 Cycle Adder.....	5-9
5.6.3 Conditional Assembly.....	5-11
5.6.4 INCLUDE.....	5-11
5.6.5 MACRO.....	5-12
5.7 LISTING DIRECTIVES.....	5-13
5.7.1 Listing Files.....	5-13
5.7.2 Labels.....	5-15

CHAPTER 5 ASSEMBLER INTERFACE (continued)

5.8 PSEUDO OPERATIONS.....	5-16
5.8.1 Equate (EQU).....	5-16
5.8.2 Form Constant Byte (FCB).....	5-17
5.8.3 Form Double Byte (FDB).....	5-17
5.8.4 Originate (ORG).....	5-17
5.8.5 Reserve Memory Byte (RMB).....	5-17
5.9 ASSEMBLER ERROR MESSAGES.....	5-18
5.10 USING FILES FROM OTHER ASSEMBLERS.....	5-20

CHAPTER 6 ICS05BW SIMULATOR USER INTERFACE

6.1 OVERVIEW.....	6-1
6.2 THE ICS05BW IN-CIRCUIT SIMULATOR.....	6-1
6.2.1 ICS05BW Simulation Speed.....	6-1
6.2.2 System Requirements for Running the ICS05BW.....	6-2
6.2.3 File Types and Formats.....	6-2
6.3 STARTING ICS05BW.....	6-5
6.4 ICS05BW WINDOWS.....	6-7
6.5 CODE WINDOWS.....	6-8
6.5.1 To Display the Code Windows Shortcut Menus.....	6-8
6.5.2 Code Window Shortcut Menu Functions.....	6-8
6.5.3 Code Window Keyboard Commands.....	6-9
6.6 VARIABLES WINDOW.....	6-10
6.6.1 Displaying the Variables Shortcut Menu.....	6-10
6.6.2 Variables Window Shortcut Menu Options.....	6-10
6.6.3 Variable Window Keyboard Commands.....	6-11
6.7 MEMORY WINDOW.....	6-12
6.8 STATUS WINDOW.....	6-13
6.9 CPU WINDOW.....	6-15
6.9.1 Changing Register Values.....	6-15
6.9.2 CPU Window Keyboard Commands.....	6-16
6.10 CHIP WINDOW.....	6-16
6.10.1 Reading Values in the Chip Window.....	6-16
6.10.2 Chip Window Keyboard Commands.....	6-17
6.11 CYCLES WINDOW.....	6-17

CHAPTER 6 ICS05BW SIMULATOR USER INTERFACE (continued)

6.12 STACK WINDOW	6-18
6.12.1 Interrupt Stack	6-18
6.12.2 Subroutine Stack	6-19
6.13 TRACE WINDOW	6-19
6.14 BREAKPOINT WINDOW	6-20
6.14.1 Adding a Breakpoint	6-20
6.14.2 Editing a Breakpoint.....	6-21
6.14.3 Deleting a Breakpoint.....	6-21
6.14.4 Removing All Breakpoints.....	6-21
6.15 PROGRAMMER WINDOWS.....	6-22
6.16 REGISTER BLOCK WINDOW.....	6-23
6.17 ENTERING DEBUGGING COMMANDS.....	6-24
6.18 ICS05BW TOOLBAR.....	6-25
6.19 ICS05BW MENUS	6-27
6.20 FILE OPTIONS.....	6-28
6.20.1 Load S19 File	6-29
6.20.2 Reload Last S19.....	6-29
6.20.3 Play Macro.....	6-30
6.20.4 Record Macro.....	6-30
6.20.5 Stop Macro	6-31
6.20.6 Open Logfile.....	6-31
6.20.7 Close Logfile	6-32
6.20.8 Exit	6-32
6.21 ICS05BW EXECUTE OPTIONS	6-33
6.21.1 Reset Processor.....	6-33
6.21.2 Step.....	6-33
6.21.3 Multiple Step	6-34
6.21.4 Go	6-34
6.21.5 Stop.....	6-34
6.21.6 Repeat Command	6-34
6.22 ICS05BW WINDOW OPTIONS	6-35
6.22.1 Open Windows.....	6-35
6.22.2 Change Colors	6-35
6.22.3 Reload Desktop	6-36
6.22.4 Save Desktop.....	6-36

CHAPTER 7 ICS05BW DEBUGGING COMMAND SET

7.1 OVERVIEW.....	7-1
7.2 ICS05BW COMMAND SYNTAX.....	7-2
7.3 COMMAND-SET SUMMARY	7-3
7.3.1 Argument Types.....	7-3
7.3.2 Command Summary.....	7-4
7.4 COMMAND DESCRIPTIONS.....	7-9

CHAPTER 8 EXAMPLE PROJECT

8.1 OVERVIEW.....	8-1
8.2 SETTING UP A SAMPLE PROJECT.....	8-1
8.2.1 Set Up the Environment	8-1
8.2.2 Create the Source Files.....	8-2
8.2.3 Assemble the Project.....	8-3

APPENDIX A S-RECORD INFORMATION

A.1 OVERVIEW.....	A-1
A.2 S-RECORD CONTENT.....	A-1
A.3 S-RECORD TYPES	A-2
A.4 S-RECORD CREATION	A-3
A.5 S-RECORD EXAMPLE	A-3
A.5.1 The S0 Header Record.....	A-4
A.5.2 The First S1 Record.....	A-5
A.5.3 The S9 Termination Record	A-6
A.5.4 ASCII Characters.....	A-6

APPENDIX B SUPPORT INFORMATION

B.1 OVERVIEW	B-1
B.2 FUNCTIONAL DESCRIPTION OF THE KIT.....	B-1
B.2.1 The Emulator	B-1
B.2.2 Programming	B-2
B.3 TROUBLESHOOTING THE QUICK START.....	B-2
B.4 TROUBLESHOOTING THE PROGRAMMER	B-4
B.5 SCHEMATIC DIAGRAM AND PARTS LIST.....	B-5
B.6 BOARD LAYOUT.....	B-11

GLOSSARY**INDEX****FIGURES**

1-1. <i>WinIDE Environment Settings</i> Dialog <i>EXE1 Tab</i>	1-5
1-2. <i>WinIDE Environment Settings</i> Dialog <i>Assembler/Compiler Tab</i>	1-5
1-3. The <i>WinIDE</i> Debugger Toolbar Button.....	1-6
1-4. The <i>WinIDE</i> Assemble/Compile File Toolbar Button.....	1-6
3-1. The <i>Pick Device</i> Dialog	3-4
4-1. <i>WinIDE</i> Window Components	4-2
4-2. <i>WinIDE</i> Status Bar.....	4-3
4-3. Edit Shortcut Menu	4-5
4-4. Marker Sub-menu	4-6
4-5. <i>WinIDE</i> Toolbar	4-7
4-6. File Menu	4-11
4-7. <i>Open File</i> Dialog.....	4-12
4-8. <i>Print</i> Dialog.....	4-13
4-9. Edit Menu.....	4-14
4-10. Environment Menu	4-17
4-11. <i>Specify project file to open</i> Dialog.....	4-17
4-12. <i>Specify project file to save</i> Dialog.....	4-18
4-13. <i>Environment Settings</i> Dialog <i>General Environment Tab</i>	4-19
4-14. <i>Environment Settings</i> Dialog: <i>General Editor Tab</i>	4-21
4-15. <i>Environment Settings</i> Dialog: <i>Assembler/Compiler Tab</i>	4-23
4-16. Error Format List.....	4-26
4-17. <i>Environment Settings</i> Dialog: <i>EXE 1 (Debugger)</i> and <i>EXE 2 (Programmer)</i>	4-27
4-18. <i>Setup Fonts</i> Dialog.....	4-28
4-19. Search Menu	4-29
4-20. <i>Find</i> Dialog	4-29
4-21. <i>Replace</i> Dialog.....	4-30
4-22. <i>Go To Line Number</i> Dialog.....	4-31
4-23. The Window Menu	4-32
4-24. <i>WinIDE</i> with Subordinate Windows Cascaded.....	4-32
4-25. <i>WinIDE</i> with Subordinate Windows Tiled.....	4-33
4-26. <i>WinIDE</i> with One Source Window and Remaining Windows Minimized	4-34

FIGURES (continued)

4-27. The WinIDE Editor with Subordinate Windows Minimized.....	4-35
4-28. Cascaded Windows with Active Window Split.....	4-36
5-1. WinIDE with CASM05W Assembler Window Displayed.....	5-2
5-2. Windows 95 Program Item Property Sheet (Shortcut Property for CASM05W.EXE).....	5-3
5-3. CASM05W for Windows Assembler Parameters.....	5-4
6-1. <i>Can't Contact Board</i> Dialog.....	6-6
6-2. The ICS05BW Windows Default Positions.....	6-7
6-3. Code Window in Disassembly Mode with Breakpoint Toggled.....	6-8
6-4. Code Window Shortcut Menu.....	6-8
6-5. <i>Window Base Address</i> Dialog.....	6-9
6-6. Variables Window with Shortcut Menu.....	6-10
6-7. <i>Add Variable</i> Dialog.....	6-10
6-8. Memory Window with Shortcut Menu.....	6-12
6-9. Status Window.....	6-13
6-10. Results of Entering the LF Command in the Status Window.....	6-14
6-11. <i>Specify Output LOG File!</i> Dialog.....	6-14
6-12. The <i>Logfile Already Exists</i> Message.....	6-14
6-13. CPU Window with Shortcut Menu.....	6-15
6-14. The <i>Change CCR</i> Dialog.....	6-16
6-15. Chip Window.....	6-17
6-16. Cycles Window.....	6-18
6-17. Stack Window.....	6-18
6-18. Trace Window.....	6-19
6-19. Breakpoint Window with Shortcut Menu.....	6-20
6-20. <i>Edit Breakpoint</i> Dialog.....	6-20
6-21. PROG05B Programmer Pick Window.....	6-22
6-22. Programmer Files Window.....	6-23
6-23. The Register Block Window.....	6-23
6-24. The WinReg Window with Typical Register File Information.....	6-24
6-25. WinIDE Toolbar.....	6-25
6-26. File Menu.....	6-28
6-27. <i>Specify S19 File to Load</i> Dialog.....	6-29
6-28. <i>Specify MACRO File to Execute</i> Dialog.....	6-30
6-29. <i>Specify MACRO File to Record</i> Dialog.....	6-30
6-30. <i>Specify Output LOG File</i> Dialog.....	6-31
6-31. <i>Logfile Already Exists</i> Dialog.....	6-31
6-32. A Sample Output Log File.....	6-32

FIGURES (continued)

6-33. ICS05BW Execute Menu.....	6-33
6-34. Window Menu	6-35
6-35. <i>Change Window Colors</i> Dialog	6-36
7-1. Assembly Window — ASM Command with (left), without (right) Argument.....	7-11
7-2. <i>Pick Device</i> Dialog.....	7-26
7-3. <i>Modify Memory</i> Dialog	7-59
7-4. PROG05B Programmer Pick Window	7-67
8-1. CASM05W Window.....	8-4
B-1. M68ICS05B Schematic Diagram (Sheet 1 of 3).....	B-6
B-2. M68ICS05B Schematic Diagram (Sheet 2 of 3).....	B-7
B-2. M68ICS05B Schematic Diagram (Sheet 3 of 3).....	B-8
B-3. M68ICS05B Board Layout.....	B-12

TABLES

1-1. M68ICS05B Specifications.....	1-3
3-1. The ICS05BW Software Files.....	3-3
4-1. WinIDE Toolbar Buttons	4-8
4-2. WinIDE Menus and Options Summary	4-9
4-2. WinIDE Menus and Options Summary (continued).....	4-10
5-1. Change Base Prefixes/Suffixes	5-8
5-2. Assembler Directives	5-10
5-3. Listing Directives	5-13
5-4. Listing File Fields	5-14
5-5. Pseudo Operations Allowed by the CASM05W.....	5-16
5-6. Assembler Error Messages.....	5-18
5-6. Assembler Error Messages (continued).....	5-19
6-1. Base Prefixes and Suffixes.....	6-11
6-2. ICS05BW Toolbar Buttons.....	6-26
6-3. ICS05BW Menus and Options Summary	6-27
6-3. ICS05BW Menus and Options Summary (continued).....	6-28
7-1. Argument Types.....	7-3
7-2. ICS05BW Command Overview.....	7-4
7-2. ICS05BW Command Overview (continued).....	7-5
7-2. ICS05BW Command Overview (continued).....	7-6
7-2. ICS05BW Command Overview (continued).....	7-7
7-2. ICS05BW Command Overview (continued).....	7-8

TABLES (continued)

7-2. ICS05BW Command Overview (continued).....	7-9
7-3. PROGRAM Commands.....	7-68
A-1. S-Record Fields.....	A-1
A-2. S-Record Field Contents	A-2
A-3. S-Record Types.....	A-3
A-4. S0 Header Record	A-4
A-5. S1 Header Record	A-5
A-6. S-9 Header Record.....	A-6
B-1. M68ICS05B Parts List	B-9
B-1. M68ICS05B Parts List (continued).....	B-10
B-1. M68ICS05B Parts List (continued).....	B-11

CHAPTER 1

INTRODUCTION

1.1 OVERVIEW

This chapter provides an overview of the M68ICS05B In-Circuit Simulator Kit components and a Quick Start guide to setting up a development project.

The Motorola M68ICS05B In-Circuit Simulator Kit is a development toolkit for designers who develop and debug target systems that incorporate M68HC705 B5, B16, and B32 Microcontroller Unit (MCU) devices. The toolkit contains all of the hardware and software needed to develop and simulate source code for and program the Motorola M68HC705B microcontrollers.

Together, the M68ICS05B printed circuit board (pod) and the ICS05BW software form a complete simulator and non-real-time I/O emulator for the M68HC705 B5, B16, and B32 devices. When you connect the pod to your PC and your target hardware, you can use the actual inputs and outputs of the target system during simulation of code.

Use the M68ICS05B toolkit with any IBM-Windows 3.x or Windows 95-based computer with a serial port.

1.2 TOOLKIT COMPONENTS

The complete M68ICS05B toolkit contains:

- Hardware:
 - The M68ICS05B in-circuit simulator pod.
 - Sample M68HC705B16 EPROM MCUs.
 - A 52-pin PLCC target emulation cable.
- Windows-optimized software components, collectively referred to as ICS05BW software, and consisting of:
 - WINIDE.EXE, the integrated development environment (IDE) software interface to your target system for editing and performing software or in-circuit simulation.
 - CASM05W.EXE, the CASM05W command-line cross-assembler.

-
- ICS05BW.EXE, the in-circuit/standalone simulator software for the M68ICS05B target MCU.
 - Documentation:
 - The *M68ICS05B In-Circuit Simulator Operator's Manual*.
 - Technical literature, including *Understanding Small Microcontrollers*, an introductory guide to understanding and using Motorola MC68HC05 family microcontrollers.

1.3 HARDWARE AND SOFTWARE REQUIREMENTS

The ICS05BW software requires this minimum hardware and software configuration:

- An IBM-compatible host computer running Windows 3.x or Windows 95 operating system.
- Approximately 640 Kb of memory (RAM) and 2 Mb free drive space.
- A serial port for communications between the M68ICS05B and the host computer.

1.4 TOOLKIT FEATURES

The M68ICS05B toolkit is a low-cost development system that supports in-circuit simulation. Its features include:

- Software and in-circuit simulation of M68HC705 B5, B16, and B32 MCUs
- Ability to program M68HC705 B5, B16, and B32 EPROM microcontrollers
- Communication with the host PC via a serial port
- ICS05BW software, including editor, assembler, and assembly source-level simulator
- 64 instruction breakpoints
- SCRIPT command for automatic execution of a sequence of commands
- Emulation cable for connection to the target system
- On-screen, context-sensitive Windows Help
- CHIPINFO command supplies M68ICS05B pod memory-map, vector, register, and pin-out information
- Software responds to both mouse and keyboard controls

1.5 SPECIFICATIONS

Table 1-1 summarizes the M68ICS05B hardware specifications.

Table 1-1. M68ICS05B Specifications

Characteristic	Specification
Temperature: Operating Storage	0° to 40° C -40° to +85° C
Relative humidity	0 to 95% (non-condensing)
Power requirement	+9 Vdc @ 0.1 A (maximum) (from included wall transformer)
Dimensions	3.5 x 3.2 in. (89 x 81 mm)

1.6 ABOUT THIS USER'S MANUAL

This manual covers the M68ICS05B software, hardware, and reference information as follows:

- Chapter 2** — Pod Installation
- Chapter 3** — Loading and Initializing the ICS05BW Software
- Chapter 4** — WinIDE User Interface
- Chapter 5** — ICS05BW In-Circuit Simulator User Interface
- Chapter 6** — CASM05W Assembler Interface
- Chapter 7** — ICS05BW Debugging Command Set
- Chapter 8** — Example Project
- Appendix A** — S-Record Information
- Appendix B** — M68ICS05B Support Information
- Glossary**
- Index**

NOTE

The procedural instructions in this user's manual assume that you are familiar with the Windows interface and selection procedures.

Figures in this manual show ICS05BW windows and dialog boxes as they appear in the Windows 95 environment.

1.7 QUICK START INSTRUCTIONS

The following instructions summarize the hardware and software installation instructions of Chapters 2 and 3.

If you are experienced in installing Motorola or other development tools, follow these steps.

- **Install the ICS05BW software:** follow the instructions on the diskette label to run the ICS05BW Setup program. During installation, follow the instructions in the installation wizard: choose the *Typical Install* option to install the files to your hard disk, or choose the *Compact Install* option to copy the files onto another diskette.
- **Connect the M68ICS05B pod:** connect the M68ICS05B pod to the host PC's serial port using the included cable. Plug the cable into the pod connector P2.
- **Supply power to the M68ICS05B pod:** connect the wall-mounted transformer's circular connector to the connector on the left side of the pod, next to the serial connector.
- **Start the WinIDE editor and open the project files:** Double click the WinIDE icon. From the WinIDE Environment menu, choose the *Open Project* option, and choose a project file from the *Specify project file to open* dialog. If no project file exists, choose the *New* option from the File menu to create a new project file. Paragraph 8.3 gives additional information about setting up a sample project.
- **Configure the environment for the ICS05BW software components:** from the WinIDE Environment menu, select the *Setup Environment* option to open the *Environment Settings* dialog and make the following changes:
 - Click on the *EXE1 Debugger* tab to bring the tab (Figure 1-1) to the front. Set the executable type, path and filename, command line options (including optional switches, filenames, or port settings), and other options for the ICS05BW debugger application.

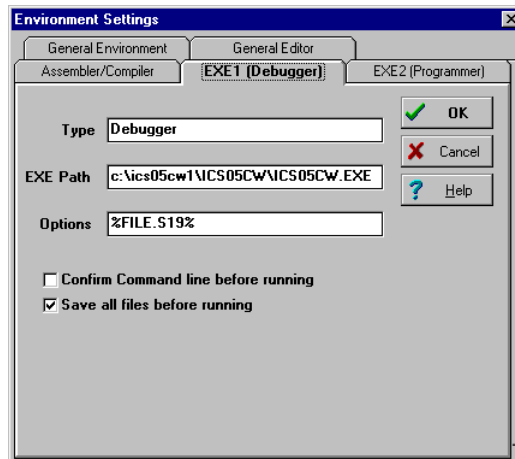


Figure 1-1. WinIDE Environment Settings Dialog EXE1 Tab

- Click on the *Assembler/Compiler* tab label to bring the tab (Figure 1-2) to the front. Set the executable path and filename, type, and other options for the CASM05W assembler or other application.

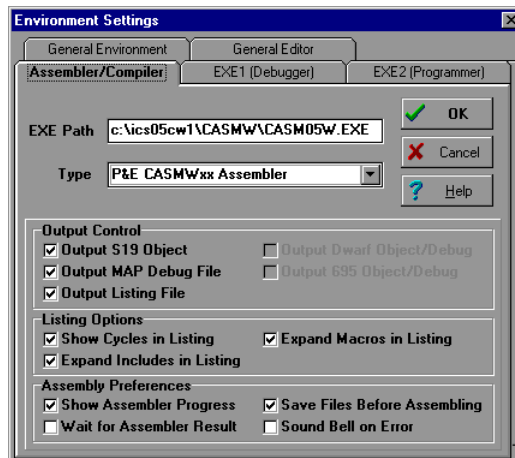


Figure 1-2. WinIDE Environment Settings Dialog Assembler/Compiler Tab

- If necessary, change the programmer settings in the *EXE2 (Programmer)* tab.
- Click on the *General Environment* and *General Editor* tabs and make changes in each as necessary.
- When you have specified all the environment settings, press the OK button to save the changes in the *WINIDE.INI* file and close the *Environment Settings* dialog.
- **Create a project file:** The desktop and environment settings you make in the *Environment Settings* dialog are stored in the *WINIDE.INI* file and read each time you start the WinIDE editor. You may also choose to save project-specific desktop and

environment settings in a project file (*.PPF) which is read when you open the project, allowing you to save and use a general environment as well as custom environments for individual projects. To create the project file:

- Specify the project-specific desktop and environment settings in the WinIDE editor.
- Choose the *Save Project As* option from the WinIDE Environment menu to name and save the project to a directory folder.
- **Run the ICS05BW simulator:** With a project or source file open in the WinIDE main window, click the Debugger (EXE1) button (Figure 1-3) on the WinIDE toolbar to start the ICS05BW debugger and debug the contents of the active source window. Additional information about the ICS05BW debugger can be found in Chapter 6 and Chapter 7.



Figure 1-3. The WinIDE Debugger Toolbar Button

- **Assemble the code:** Press the *Assemble/Compile File* button (Figure 1-4) on the WinIDE toolbar to assemble the source code in the active WinIDE window. Additional information about the CASM05W assembler can be found in Chapter 5.



Figure 1-4. The WinIDE Assemble/Compile File Toolbar Button

If you experience problems with the Quick Start procedures, refer to section B.3 for troubleshooting instructions.

CHAPTER 2

POD INSTALLATION

2.1 OVERVIEW

This chapter explains how to install the hardware components of the M68ICS05B in-circuit simulator on your host PC in both interactive and standalone modes.

When the M68ICS05B pod is connected to the serial port of a host PC, you can use the actual inputs and outputs of your target system during simulation of your source code. When the pod is not connected to the PC, you can use the ICS05BW software as a standalone simulator.

2.2 INSTALLING THE M68ICS05B POD

Before beginning, locate these pod components:

- Hardware reset switch S3
- Power On switch S1
- 9-pin RS-232 serial connector P2
- 9 Volt Input Circular connector P1

To install the M68ICS05B Pod:

1. Connect the M68ICS05B pod to the serial port of your computer: attach the supplied 9-pin serial cable to the connector on the M68ICS05B board and attach the other end to the host PC's serial port.
2. Connect the 9-volt power supply: attach the power supply plug to the circular power connector on the M68ICS05B pod and plug the power supply into a surge protection device or wall outlet.
3. To run the ICS05BW software with actual input and output from the target device, connect the M68ICS05B pod to the 52-pin PLCC socket on the target board using the emulation cable included in the M68ICS05B kit. When this connection is established and the pod and target system are started up, the target system will provide inputs to and accept output from the ICS05BW software.

CHAPTER 3

SOFTWARE INSTALLATION AND INITIALIZATION

3.1 OVERVIEW

This chapter how to install and initialize the ICS05BW software.

3.2 THE ICS05BW SOFTWARE COMPONENTS

The ICS05BW software consists of the following components:

- WINIDE.EXE: the Windows Integrated Development Environment editor
- CASM05W.EXE: the 68HC05 Cross Assembler
- ICS05BW.EXE: the in-circuit Simulator, optimized for the HC05Bx-family Motorola microcontrollers

3.2.1 The WinIDE Editor

The WinIDE editor is a text editing application that lets you use several different programs from within a single development environment. Use the WinIDE editor to edit source code, launch a variety of compatible assemblers, compilers, debuggers, or programmers, and configure the environment to read and display errors from such programs.

If you select error detection options in the *Environment Settings* dialog, the WinIDE editor will highlight errors in the source code, and display the error messages from the compiler or assembler in the editor.

To debug source code in the WinIDE code window, load compatible source-level map files. You can configure the CASM05W to produce such map files as an output.

Because the WinIDE editor is modular, you may, for example, choose to substitute a third party C-compiler or other assembler for the CASM05W cross assembler provided in the toolkit.

3.2.2 CASM05W

The CASM05W is a cross assembler that creates Motorola S19 object files and MAP files from assembly files containing 68HC05 instructions.

The CASM05W assembler has the same functionality as the DOS version of the assembler, optimized to take advantage of the Windows graphical environment. Using the assembler in conjunction with the WinIDE editor, you can edit standard ASCII files (such as the .ASM assembly files), and use menu options and toolbar buttons to call other customized assemblers, compilers, or debuggers. The resulting environment can allow assembled files to be downloaded and tested while the original source code is modified and assembled, all without leaving the WinIDE editing environment.

Paragraph 5-5 gives additional information about assembler options and how to use them.

3.2.3 ICS05BW

The ICS05BW is a simulator for HC705B series microcontrollers that can get inputs and outputs (I/O) for the device when the external M68ICS05B pod is attached to the host computer. If you want to use I/O from your own target board, you can attach the M68ICS05B pod to your board through the extension cable that comes with the toolkit. You can also program HC05B devices using the ICS05B board and ICS05BW software.

You can start or move to the ICS05BW in-circuit simulator software from the WinIDE editor. The ICS05BW software can also be started using standard Windows techniques and run independently of the WinIDE editor.

The ICS05BW simulator accepts standard Motorola S19 object code files as input for object code simulation and debugging. If you are using a third party assembly- or C-language compiler, the compiler must be capable of producing source-level map files to allow source-level debugging.

3.3 INSTALLING THE ICS05BW SOFTWARE

The ICS05BW software is supplied on two 3.5" diskettes containing a setup program that automatically installs the software on your hard drive.

3.3.1 Installation Steps

To install the software on your host computer's hard drive, follow these steps:

1. Insert the ICS05BW diskette into the 3.5-inch disk drive.
For Windows 3.x: in the Program Manager, select Run from the File menu.
For Windows 95: from the Start Menu, select the Run option.
2. In the Run dialog, enter Setup (or click the Browse button to select a different drive and/or directory) and press OK.

3. In the ICS05BW Microsoft Setup Wizard, follow the instructions that appear on the screen.

NOTE

Select either the Typical Installation type to install the files to your hard disk, or choose Compact Installation to copy the files to another diskette.

Table 3-1 lists the files and directories required to control the ICS05BW program modules.

Table 3-1. The ICS05BW Software Files

Directory	Filename	Description
Casmw	casm05w.exe	Windows Cross Assembler for the 68HC05
ics05bw	ics05bw.exe	Windows In-Circuit Simulator
WinIDE	winide.exe	Windows integrated Development Environment (WinIDE) program file
	Winide.hlp	Help for WinIDE

3.3.2 Starting the ICS05BW Software

Depending on the operating system you are using, choose the appropriate method for starting the WinIDE software:

- From the Windows 3.x Program Manager, double-click the WinIDE and/or ICS05BW icon(s).
- From the Windows 95 Start Menu, select the WinIDE and/or ICS05BW icon(s).

You can start the ICS05BW simulator alone or from within the WinIDE.

3.3.3 ICS Communication

When you double-click the ICS05BW icon, the software attempts to communicate with the pod using the specified COM port, baud rate, and default parameters. When the software connects to the pod, the Status Bar contains the message, "Contact with pod established."

If the pod is not installed, or the ICS05BW software cannot establish communications with the pod through the specified COM port, the *Can't Contact Board* dialog appears, with options for changing the COM port or baud rate and retrying the connection, or choosing to run the simulator in standalone mode (with no input or output from the pod).

NOTE

The COM port assignment defaults to COM 1 unless you specify another port in the startup command.

The first time you attempt to connect to the pod after installing the ICS05BW software, the software asks you to select chip from the *Pick Device* dialog (Figure 3-1):



Figure 3-1. The *Pick Device* Dialog

To open the *Pick Device* dialog, enter the CHIPMODE command in the ICS05BW Status Window command line.

CHAPTER 4

THE WinIDE USER INTERFACE

4.1 OVERVIEW

This chapter is an overview of the WinIDE windows, menus, toolbars, dialogs, options, and procedures for using each.

4.2 THE WINDOWS INTEGRATED DEVELOPMENT ENVIRONMENT

The Windows Integrated Development Environment (the WinIDE editor) is a graphical interface for editing, compiling, assembling, and debugging source code for embedded systems using the M68ICS05B In-Circuit Simulator.

The WinIDE interface consists of standard Windows title and menu bars, a WinIDE toolbar, a main window containing any open source or project file windows, and a status bar. The WinIDE components are labeled in Figure 4-1 and described in paragraph 4.3.2.