



Chipsmall Limited consists of a professional team with an average of over 10 year of expertise in the distribution of electronic components. Based in Hongkong, we have already established firm and mutual-benefit business relationships with customers from,Europe,America and south Asia,supplying obsolete and hard-to-find components to meet their specific needs.

With the principle of "Quality Parts,Customers Priority,Honest Operation,and Considerate Service",our business mainly focus on the distribution of electronic components. Line cards we deal with include Microchip,ALPS,ROHM,Xilinx,Pulse,ON,Everlight and Freescale. Main products comprise IC,Modules,Potentiometer,IC Socket,Relay,Connector.Our parts cover such applications as commercial,industrial, and automotives areas.

We are looking forward to setting up business relationship with you and hope to provide you with the best service and solution. Let us make a better world for our industry!



## Contact us

Tel: +86-755-8981 8866 Fax: +86-755-8427 6832

Email & Skype: info@chipsmall.com Web: www.chipsmall.com

Address: A1208, Overseas Decoration Building, #122 Zhenhua RD., Futian, Shenzhen, China



# Customer Information Sheet

DRAWING No.: M80-716XXXX

IF IN DOUBT - ASK

©

NOT TO SCALE

THIRD ANGLE PROJECTION

ALL DIMENSIONS IN mm

**SPECIFICATIONS:**

**MATERIAL:**  
 MOULDING = POLYAMIDE 46 UL94V-0  
 CONTACTS = COPPER ALLOY  
 JACKSCREWS = STAINLESS STEEL, CIRCLIP = SPRING STEEL

**FINISH:**  
 CONTACTS:  
 01 = 2.5 - 3.0µ 100% TIN OVER NICKEL BODY, 0.30µ GOLD CLIP  
 05 = 0.25 - 0.30µ GOLD BODY, 0.30µ GOLD CLIP

CIRCLIP = ZINC & PASSIVATE

**ELECTRICAL:**  
 CURRENT RATING AT 25°C = 3.0A MAX (SMALL)  
 15.0A MAX (LARGE)  
 CURRENT RATING AT 85°C = 2.2A MAX (SMALL)  
 11.0A MAX (LARGE)  
 VOLTAGE PROOF = 360V AC/DC  
 CONTACT RESISTANCE:  
 INITIAL = 20mΩ MAX  
 AFTER CONDITIONING = 25mΩ MAX

**INSULATION RESISTANCE:**  
 INITIAL = 1000MΩ MIN  
 AFTER CONDITIONING = 100MΩ MIN

**MECHANICAL:**  
 DURABILITY = 500 OPERATIONS  
 INSERTION FORCE = 2.8N MAX, 1.0N MIN  
 WITHDRAWAL FORCE = 1.8N MAX, 0.2N MIN

**ENVIRONMENTAL:**  
 TEMPERATURE RANGE = -55°C TO +125°C

**PACKING:**  
 TRAYS

FOR COMPLETE SPECIFICATION, SEE COMPONENT SPECIFICATION C017XX (LATEST ISSUE)

**NOTES:**

- FROM No. 1 POSITION, CONTACTS NUMBERED IN SEQUENCE FROM RIGHT TO LEFT AND FROM BOTTOM ROW TO TOP ROW.
- CONNECTOR SUPPLIED UN-ASSEMBLED.
- RECOMMENDED WIRE FOR SMALL CRIMPS = 22AWG PTFE INSULATED WIRE TO BS 3G 210 TYPE A, MAX INSULATION DIAMETER =  $\phi$ 1.10mm. RECOMMENDED WIRE FOR LARGE CRIMPS = 18 & 20AWG PTFE INSULATED WIRE TO BS 3G 210 TYPE A.
- FOR EXTRA CONTACTS, USE PART NUMBER M80-0110005 FOR M80-716XX05 AND M80-0110001 FOR M80-716XX01.
- RECOMMENDED HAND CRIMP TOOL = M22520/2-01 WITH POSITIONER T5747. REFER TO TOOLING INSTRUCTION SHEET IS-01 FOR COMPLETE CRIMPING INSTRUCTIONS.
- CONTACT INSERTION AND EXTRACTION TOOL = Z80-280. REFER TO TOOLING INSTRUCTION SHEET IS-25 FOR ASSEMBLY INSTRUCTIONS.

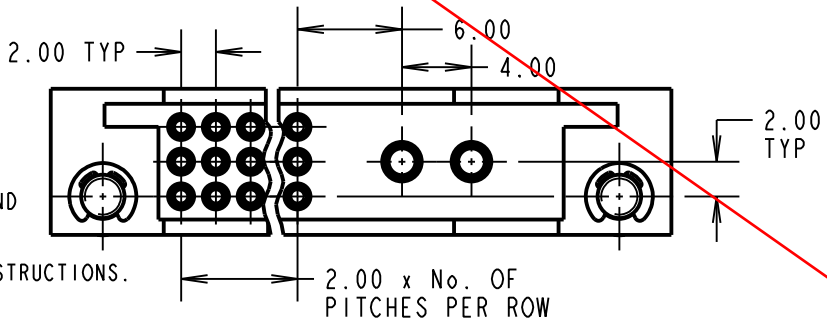
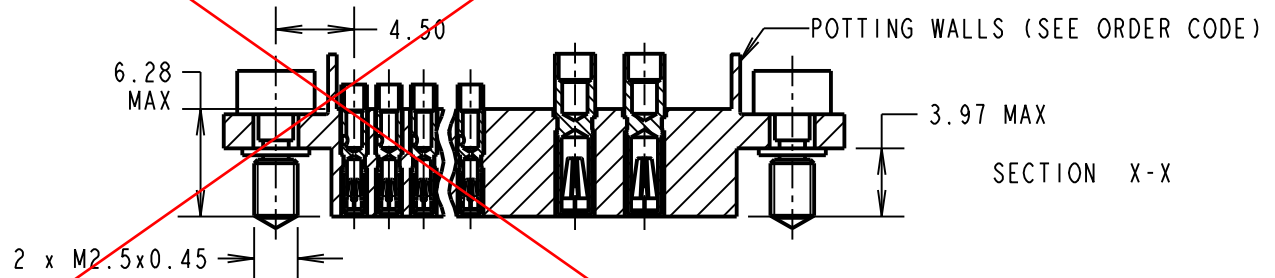
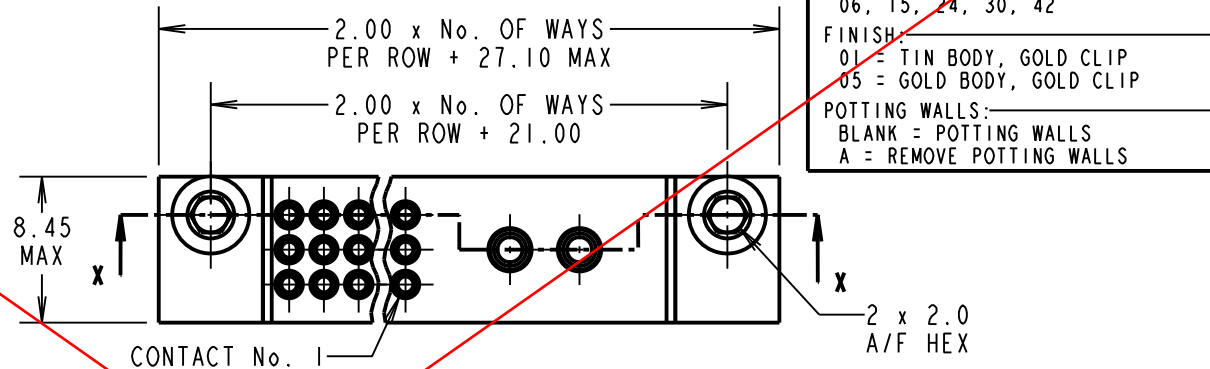
**OBSOLETE**

**ORDER CODE: M80-716XXXX**

No. OF SMALL CONTACTS: \_\_\_\_\_  
 06, 15, 24, 30, 42

**FINISH:**  
 01 = TIN BODY, GOLD CLIP  
 05 = GOLD BODY, GOLD CLIP

**POTTING WALLS:**  
 BLANK = POTTING WALLS  
 A = REMOVE POTTING WALLS



SB	8	22.07.11	11376
NAME	ISS.	DATE	C/NOTE
APPROVED: S.BENNETT			
CHECKED: M.G.PLESTED			
DRAWN: J. CLAY			
CUSTOMER REF.:			
ASSEMBLY DRG:			

**HARWIN**

HARWIN USA  
 TEL: 603 893 5376  
 FAX: 603 893 5396  
 mis@harwin.com

HARWIN Europe (UK)  
 TEL: 023 9231 4545  
 FAX: 023 9231 4590  
 mis@harwin.co.uk

HARWIN Asia  
 TEL: +65 6 779 4909  
 FAX: +65 6 779 3868  
 mis@harwin.com.sg

THIS DRAWING AND ANY INFORMATION OR DESCRIPTIVE MATTER SET OUT HEREON ARE CONFIDENTIAL AND COPYRIGHT PROPERTY OF THE HARWIN GROUP AND MUST NOT BE DISCLOSED, LOANED, COPIED OR USED FOR MANUFACTURING, TENDERING OR FOR ANY OTHER PURPOSE WITHOUT THEIR WRITTEN PERMISSION.

**TOLERANCES**  
 X. =  $\pm$ 1mm  
 X.X =  $\pm$ 0.25mm  
 X.XX =  $\pm$ 0.10mm  
 X.XXX =  $\pm$ 0.01mm  
 ANGLES =  $\pm$ 5°  
 UNLESS STATED

**MATERIAL:**  
 SEE ABOVE

**FINISH:** SEE ABOVE

**S/AREA:** mm<sup>2</sup>

**TITLE:** 3-ROW 2mm PITCH FEMALE CRIMP + POWER SOCKET ASSY (LARGE BORE) + JACKSCREWS

**DRAWING NUMBER:**  
**M80-716XXXX**

SHT 2 OF 2