



Chipsmall Limited consists of a professional team with an average of over 10 year of expertise in the distribution of electronic components. Based in Hongkong, we have already established firm and mutual-benefit business relationships with customers from,Europe,America and south Asia,supplying obsolete and hard-to-find components to meet their specific needs.

With the principle of “Quality Parts,Customers Priority,Honest Operation,and Considerate Service”,our business mainly focus on the distribution of electronic components. Line cards we deal with include Microchip,ALPS,ROHM,Xilinx,Pulse,ON,Everlight and Freescale. Main products comprise IC,Modules,Potentiometer,IC Socket,Relay,Connector.Our parts cover such applications as commercial,industrial, and automotives areas.

We are looking forward to setting up business relationship with you and hope to provide you with the best service and solution. Let us make a better world for our industry!



## Contact us

Tel: +86-755-8981 8866 Fax: +86-755-8427 6832

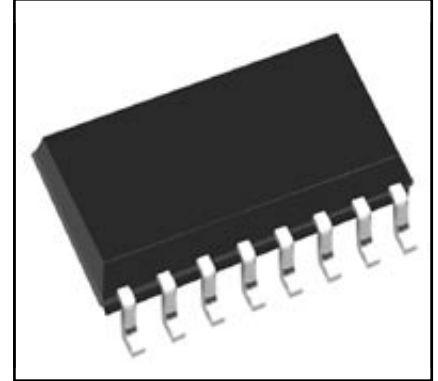
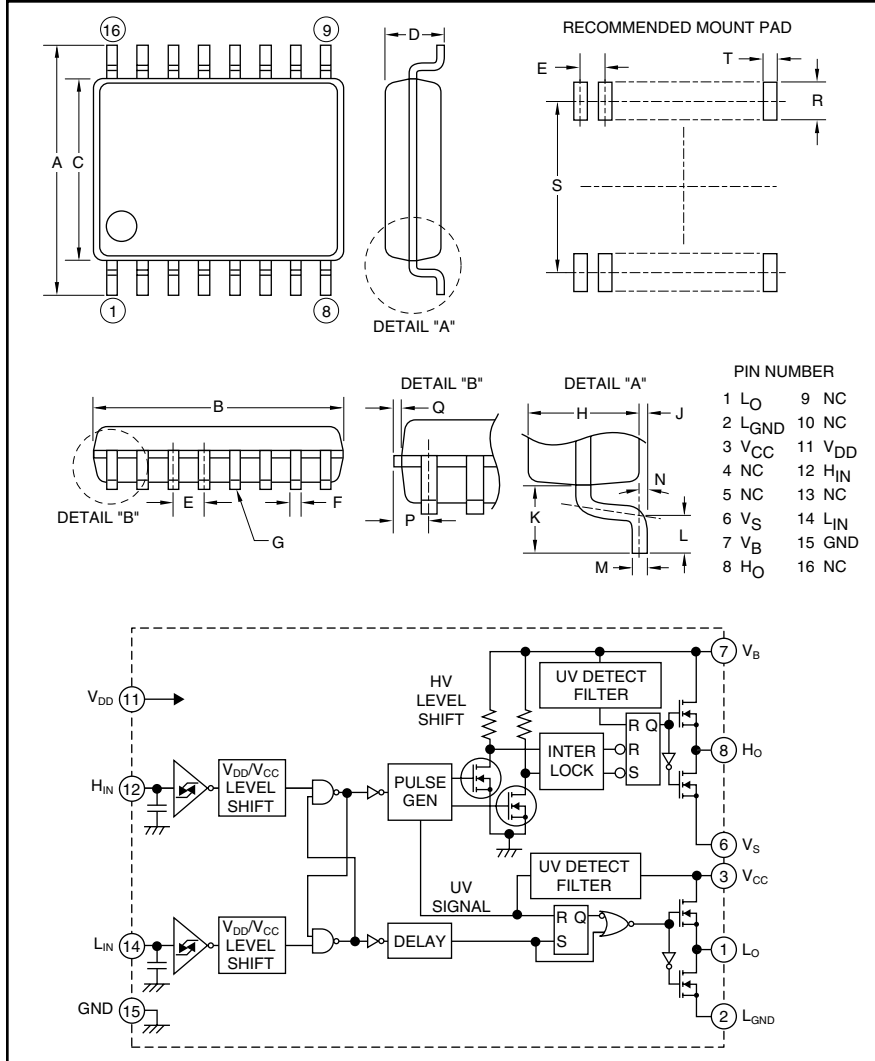
Email & Skype: info@chipsmall.com Web: www.chipsmall.com

Address: A1208, Overseas Decoration Building, #122 Zhenhua RD., Futian, Shenzhen, China



### HVIC

High Voltage Integrated Circuit  
600 Volts/±2 Amperes



#### Description:

M81701FP is a high voltage Power MOSFET and IGBT module driver for half-bridge applications.

#### Features:

- Floating Supply Voltage
- Output Current
- Half-Bridge Driver
- SOP-16

#### Applications:

- HID
- PDP
- MOSFET Driver
- IGBT Driver
- Inverter Module Control

#### Ordering Information:

M81701FP is a ±2 Ampere, 600 Volt HVIC, High Voltage Integrated Circuit

#### Outline Drawing and Circuit Diagram

Dimensions	Inches	Millimeters
A	0.31±0.01	7.8±0.3
B	0.41±0.004	10.1±0.1
C	0.21±0.004	5.3±0.1
D	0.12	2.10
E	0.05	1.27
F	0.02±0.002	0.4±0.05
G	0.004	0.1
H	0.07	1.8
J	0.01±0.004	0.1±0.1

Dimensions	Inches	Millimeters
K	0.05	1.25
L	0.024±0.008	0.6±0.2
M	0.1±0.002	0.2±0.05
N	4°±4°	4°±4°
P	0.03 Max.	0.755 Max.
Q	0.006	0.15
R	0.05 Min.	Min. 1.27
S	0.30	7.62
T	0.029	0.76



Powerex, Inc., 200 E. Hillis Street, Youngwood, Pennsylvania 15697-1800 (724) 925-7272

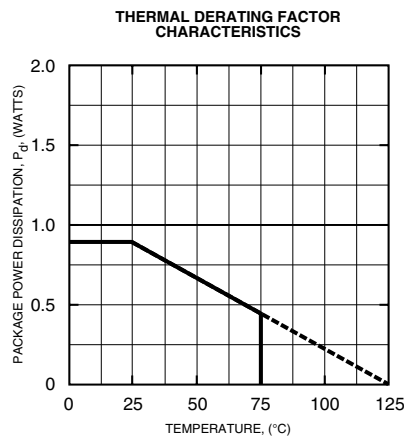
**M81701FP**  
**HVIC, High Voltage Integrated Circuit**  
 600 Volts/±2 Amperes

**Absolute Maximum Ratings,  $T_a = 25^\circ\text{C}$  unless otherwise specified**

Characteristics	Symbol	M81701FP	Units
High Side Floating Supply Absolute Voltage	$V_B$	-0.5 ~ 624	Volts
High Side Floating Supply Offset Voltage	$V_S$	-0.5 ~ 600	Volts
High Side Floating Supply Voltage ( $V_{BS} = V_B - V_S$ )	$V_{BS}$	-0.5 ~ 24	Volts
Allowable Offset Supply Voltage Minus Surge ( $P_W < 1\mu\text{s}$ )	$-V_S$	-5	Volts
High Side Output Voltage	$V_{HO}$	$V_S - 0.5 \sim V_B + 0.5$	Volts
Low Side Fixed Supply Voltage	$V_{CC}$	-0.5 ~ 24	Volts
Low Side Output Voltage	$V_{LO}$	-0.5 ~ $V_{CC} + 0.5$	Volts
Logic Supply Voltage	$V_{DD}$	-0.5 ~ 24	Volts
Logic Input Voltage ( $H_{IN}, L_{IN}$ )	$V_{IN}$	-0.5 ~ $V_{DD} + 0.5$	Volts
Low Side Return Offset Voltage ( $V_{CC} - L_{GND} < 24\text{V}$ )	$L_{GND}$	-5 ~ $V_{CC} + 0.5$	Volts
Allowable Offset Supply Voltage Transient	$dV_S/dt$	±50	V/ns
Package Power Dissipation ( $T_a = 25^\circ\text{C}$ , On Board)	$P_d$	0.88	Watts
Linear Derating Factor ( $T_a > 25^\circ\text{C}$ , On Board)	$K_\theta$	-8.8	mW/°C
Junction to Case Thermal Resistance	$R_{th(j-c)}$	50	°C/W
Junction Temperature	$T_j$	-20 ~ 125	°C
Operation Temperature	$T_{opr}$	-20 ~ 75	°C
Storage Temperature	$T_{stg}$	-40 ~ 125	°C

**Recommended Operating Conditions**

Characteristics	Symbol	Test Conditions	Min.	Typ.	Max.	Units
High Side Floating Supply Absolute Voltage	$V_B$		$V_S + 10$	—	$V_S + 20$	Volts
High Side Floating Supply Offset Voltage	$V_S$		0	—	500	Volts
High Side Floating Supply Voltage	$V_{BS}$	$V_{BS} = V_B - V_S$	10	—	20	Volts
Low Side Fixed Supply Voltage	$V_{CC}$		10	—	20	Volts
Logic Supply Voltage	$V_{DD}$		5	—	20	Volts
Logic Input Voltage	$V_{IN}$	$H_{IN}, L_{IN}$	0	—	$V_{DD}$	Volts
Low Side Return Offset Voltage	$L_{GND}$		-5	—	5	Volts





Powerex, Inc., 200 E. Hillis Street, Youngwood, Pennsylvania 15697-1800 (724) 925-7272

M81701FP

HVIC, High Voltage Integrated Circuit

600 Volts/±2 Amperes

## Electrical Characteristics

$T_a = 25^\circ\text{C}$ ,  $V_{CC} = V_{BS} (= V_B - V_S) = V_{DD} = 15\text{V}$ ,  $L_{GND} = 0\text{V}$  unless otherwise specified

Characteristics	Symbol	Test Conditions	Min.	Typ.	Max.	Units
Floating Supply Leakage Current	$I_{FS}$	$V_B = V_S = 600\text{V}$	—	—	1	$\mu\text{A}$
$V_{BS}$ Standby Current	$I_{BS}$		—	0.4	0.7	mA
$V_{CC}$ Standby Current	$I_{CC}$		—	0.75	1.5	mA
$V_{DD}$ Standby Current	$I_{DD}$		—	—	10	$\mu\text{A}$
High Level Output Voltage	$V_{OH}$	$I_O = 0\text{A}$ , $L_O$ , $H_O$	13.8	14.4	—	Volts
Low Level Output Voltage	$V_{OL}$	$I_O = 0\text{A}$ , $L_O$ , $H_O$	—	—	0.1	Volts
High Level Input Threshold Voltage	$V_{IH15}$	$H_{IN}$ , $L_{IN}$	—	8.4	9.5	Volts
Low Level Input Threshold Voltage	$V_{IL15}$	$H_{IN}$ , $L_{IN}$	6.0	6.8	—	Volts
High Level Input Threshold Voltage	$V_{IH5}$	$H_{IN}$ , $L_{IN}$ ( $V_{DD} = 5\text{V}$ )	—	3.1	4.1	volts
Low Level Input Threshold Voltage	$V_{IL5}$	$H_{IN}$ , $L_{IN}$ ( $V_{DD} = 5\text{V}$ )	1.4	2.4	—	Volts
High Level Input Bias Current	$I_{IH}$	$V_{IN} = 15\text{V}$	—	75	150	$\mu\text{A}$
Low Level Input Bias Current	$I_{IL}$	$V_{IN} = 0\text{V}$	—	—	1.0	$\mu\text{A}$
$V_{BS}$ Supply UV Reset Voltage	$V_{BSuvr}$		7.5	8.6	9.7	Volts
$V_{BS}$ Supply UV Hysteresis Voltage	$V_{BSuvh}$		0.1	0.4	0.7	Volts
$V_{BS}$ Supply UV Filter Time	$t_{VBSuv}$		—	10	—	$\mu\text{s}$
$V_{CC}$ Supply UV Reset Voltage	$V_{CCuvr}$		7.5	8.6	9.7	Volts
$V_{CC}$ Supply UV Hysteresis Voltage	$V_{CCuvh}$		0.1	0.4	0.7	Volts
$V_{CC}$ Supply UV Filter Time	$t_{VCCuv}$		—	10	—	$\mu\text{s}$
Output High Level Short Circuit Pulsed Current	$I_{OH}$	$V_O = 0\text{V}$ , $V_{IN} = 15\text{V}$ , $P_W < 10\mu\text{s}$	—	-2.5	—	Amperes
Output Low Level Short Circuit Pulsed Current	$I_{OL}$	$V_O = 15\text{V}$ , $V_{IN} = 0\text{V}$ , $P_W < 10\mu\text{s}$	—	2.5	—	Amperes
Output High Level ON Resistance	$R_{OH}$	$I_O = -200\text{mA}$ , $R_{OH} = (V_{OH} - V_O)/I_O$	—	10	13	$\Omega$
Output Low Level ON Resistance	$R_{OL}$	$I_O = 200\text{mA}$ , $R_{OL} = V_O/I_O$	—	2.5	3	$\Omega$
High Side Turn-On Propagation Delay	$t_{dLH(HO)}$	$C_L = 1000\text{pF}$ between $H_O - V_S$	—	—	350	ns
High Side Turn-Off Propagation Delay	$t_{dHL(HO)}$	$C_L = 1000\text{pF}$ between $H_O - V_S$	—	—	330	ns
High Side Turn-On Rise Time	$t_{rH}$	$C_L = 1000\text{pF}$ between $H_O - V_S$	—	—	60	ns
High Side Turn-Off Fall Time	$t_{fH}$	$C_L = 1000\text{pF}$ between $H_O - V_S$	—	—	30	ns
Low Side Turn-On Propagation Delay	$t_{dLH(LO)}$	$C_L = 1000\text{pf}$ between $L_O - \text{GND}$	—	—	350	ns
Low Side Turn-Off Propagation Delay	$t_{dHL(LO)}$	$C_L = 1000\text{pf}$ between $L_O - \text{GND}$	—	—	330	ns
Low Side Turn-On Rise Time	$t_{rL}$	$C_L = 1000\text{pf}$ between $L_O - \text{GND}$	—	—	60	ns
Low Side Turn-Off Rise Time	$t_{fL}$	$C_L = 1000\text{pf}$ between $L_O - \text{GND}$	—	—	30	ns
Delay Matching, High Side and Low Side Turn-On	$\Delta t_{dLH}$	$ t_{dLH(HO)} - t_{dLH(LO)} $	—	—	30	ns
Delay Matching, High Side and Low Side Turn-Off	$\Delta t_{dHL}$	$ t_{dHL(HO)} - t_{dHL(LO)} $	—	—	30	ns

**M81701FP**  
**HVIC, High Voltage Integrated Circuit**  
 600 Volts/±2 Amperes

FUNCTION TABLE (X: H or L)

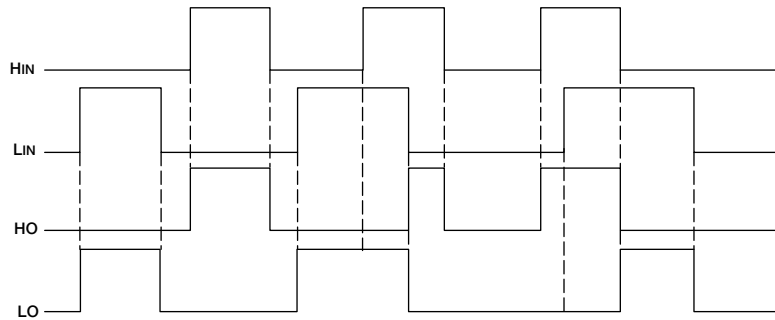
H <sub>IN</sub>	L <sub>IN</sub>	V <sub>BS</sub> UV	V <sub>CC</sub> UV	H <sub>O</sub>	L <sub>O</sub>	Behavioral State
L	L	H	H	L	L	LO = OFF, HO = OFF
L	H	H	H	L	H	LO = ON, HO = OFF
H	L	H	H	H	L	LO = OFF, HO = ON
H	H	H	H	*	*	
X	L	L	H	L	L	LO = OFF, HO = OFF, V <sub>BS</sub> UV tripped
X	H	L	H	L	H	LO = ON, HO = OFF, V <sub>BS</sub> UV tripped
L	X	H	L	L	L	LO = OFF, HO = OFF, V <sub>CC</sub> UV tripped
H	X	H	L	L	L	LO = OFF, HO = OFF, V <sub>CC</sub> UV tripped

Note : "L" state of V<sub>BS</sub> UV and V<sub>CC</sub> UV means that UV trip voltage.  
 \* If both input signals are "H", refer to TIMING DIAGRAM.

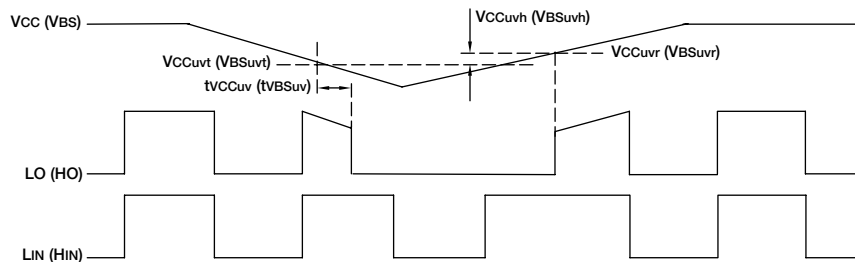
**TIMING DIAGRAM**

**1. Input/Output Timing Diagram**

When input signal (H<sub>IN</sub> or L<sub>IN</sub>) is "H", then output signal (H<sub>O</sub> or L<sub>O</sub>) is "H". In the case of both input signals (H<sub>IN</sub> and L<sub>IN</sub>) are "H", first coming input signal (H<sub>IN</sub> or L<sub>IN</sub>) "H" is only accepted. Corresponding this signal, output signal (H<sub>O</sub> or L<sub>O</sub>) becomes "H". Corresponding the other signal (L<sub>IN</sub> or H<sub>IN</sub>), output signal (L<sub>O</sub> or H<sub>O</sub>) keeps "L".



**2. V<sub>CC</sub> (V<sub>BS</sub>) Supply Under Voltage Lockout Timing Diagram**



**3. Allowable Supply Voltage Transient**

Allowable high side floating supply voltage (V<sub>BS</sub>) transient or low side fixed supply voltage (V<sub>CC</sub>) transient are below 50V/μs. In case V<sub>BS</sub> or V<sub>CC</sub> are started more than 50V/μs, output signal (H<sub>O</sub> or L<sub>O</sub>) may be "H".