



Chipsmall Limited consists of a professional team with an average of over 10 year of expertise in the distribution of electronic components. Based in Hongkong, we have already established firm and mutual-benefit business relationships with customers from,Europe,America and south Asia,supplying obsolete and hard-to-find components to meet their specific needs.

With the principle of “Quality Parts,Customers Priority,Honest Operation,and Considerate Service”,our business mainly focus on the distribution of electronic components. Line cards we deal with include Microchip,ALPS,ROHM,Xilinx,Pulse,ON,Everlight and Freescale. Main products comprise IC,Modules,Potentiometer,IC Socket,Relay,Connector.Our parts cover such applications as commercial,industrial, and automotives areas.

We are looking forward to setting up business relationship with you and hope to provide you with the best service and solution. Let us make a better world for our industry!



Contact us

Tel: +86-755-8981 8866 Fax: +86-755-8427 6832

Email & Skype: info@chipsmall.com Web: www.chipsmall.com

Address: A1208, Overseas Decoration Building, #122 Zhenhua RD., Futian, Shenzhen, China

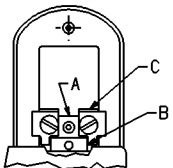


TO INSTALL DIE SET AND ADJUST HYTOOL™

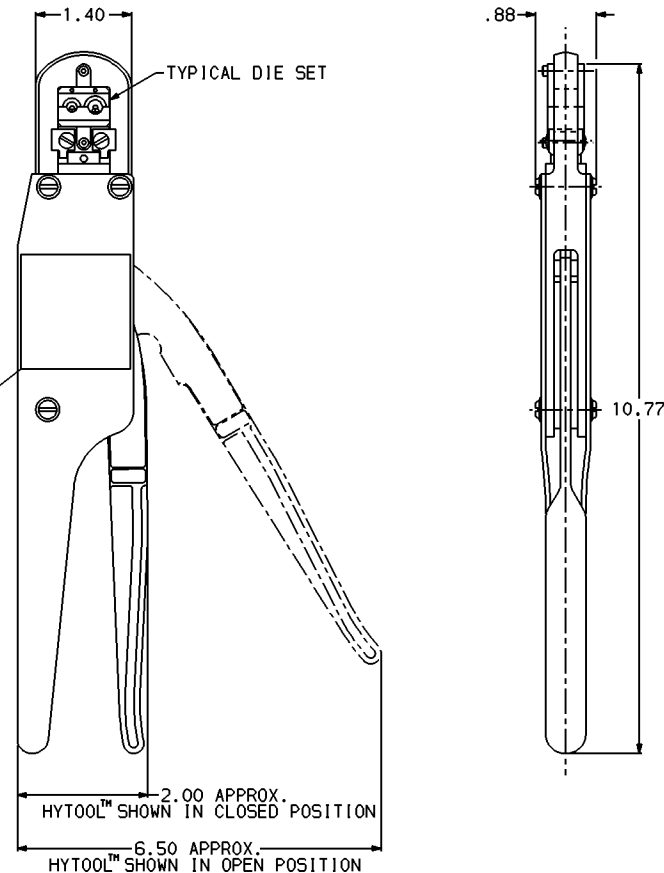
KEEP TOOL ADJUSTED SO THAT NORMAL HAND FORCE (45 TO 55 LBS.) IS REQUIRED TO BUTT DIES (NO CRIMP) AND RELEASE RATCHET.

1. SELECT PROPER DIE SET TO MATCH CONNECTOR AND CABLE SIZE TO BE INSTALLED.
2. LOOSEN ALLEN HEAD DIE HOLDER LOCK SCREW 'A' USING 3/32 ALLEN WRENCH.
3. TURN COUPLER BUSHING 'B' SO THAT RAM DIE HOLDER 'C' MOVES TO FULL DOWN POSITION.
4. WITH STAMPED LETTERING ON FACE OF THE DIE SET FACING THE OPERATOR, PLACE DIES IN TOOL SO THAT THE HOLDING PRONGS STRADDLE THE HEAD AND RAM. HAND TIGHTEN HOLDING SCREWS IN EACH DIE.
5. CLOSE HANDLES AND ALIGN BOTH PARTS OF DIE SET. TURN COUPLER BUSHING 'B' SO THAT RAM DIE HOLDER 'C' MOVES UP TO FULL EXTENT (UNTIL DIES BUTT).
6. RELEASE HANDLES SLIGHTLY AND TURN BUSHING COUPLER 'B' 1/4 TURN MORE (TO MOVE RAM DIE HOLDER 'C' UPWARD).
7. REMOVE LOWER DIE AND TIGHTEN ALLEN SCREW 'A'. REPLACE LOWER DIE. ACTUATE TOOL AND CHECK HAND FORCE.

NOTE: REPEAT STEPS 2, 6 AND 7 IF FORCE IS TOO LIGHT. BACK OFF 'B' SLIGHTLY IF FORCE IS TOO GREAT.



REV.	DATE	DESCRIPTION	BY	C'K'D.
9	7/29/96	REDRAWN TO CAD AND ADDED M8ND-81G1 TO TABLE PER (PCN 2701)	JWA	RDP



M8ND	LABEL
M8ND-81	NO LABEL
M8ND-81G1	SPECIAL DISASSEMBLED VERSION

NOTES:

1. RATCHET MECHANISM PERMITS HYTOOL™ TO BE OPENED ONLY AFTER INSTALLATION OPERATION HAS BEEN COMPLETED.
2. REQUIRES A STANDARD 3/32 ALLEN HEX SOCKET WRENCH FOR RAM ADJUSTMENT.

MATERIAL - STEEL

WEIGHT - APPROX. 1-3/4 LBS.

ACCOMMODATES - ALL 'N' TYPE DIE SETS DESIGNED FOR CONDUCTOR TERMINATIONS.

REFERENCE - REPAIR PARTS LIST - SD53968

HAND HYLUGGER		SCALE
CAT NO: M8ND TABLE		NYS
DRWN: R.U.N.	3/5/94	CHECKED: L.R.S. 4/8/94
DSGN APPVL: J MURRAY	12/26/95	MFG APPVL: N/A
S.A. APPVL: D VARIO	1/5/96	MKTG APPVL: C CHADBOURNE 1/4/96
CAD FILE: SD30323-SHT01		PH REF: N/A
FRAMATONE CONNECTORS USA INC.		MDL REF: N/A
BURNDY ELECTRICAL		PROJECT: .
MANCHESTER, NH 03108		DRAWING NO. SD30323
U. S. A.		REV 9
1-800-346-4175		SHEET 1 OF 1

REV. 06/19/95