



Chipsmall Limited consists of a professional team with an average of over 10 year of expertise in the distribution of electronic components. Based in Hongkong, we have already established firm and mutual-benefit business relationships with customers from,Europe,America and south Asia,supplying obsolete and hard-to-find components to meet their specific needs.

With the principle of "Quality Parts,Customers Priority,Honest Operation,and Considerate Service",our business mainly focus on the distribution of electronic components. Line cards we deal with include Microchip,ALPS,ROHM,Xilinx,Pulse,ON,Everlight and Freescale. Main products comprise IC,Modules,Potentiometer,IC Socket,Relay,Connector.Our parts cover such applications as commercial,industrial, and automotives areas.

We are looking forward to setting up business relationship with you and hope to provide you with the best service and solution. Let us make a better world for our industry!



Contact us

Tel: +86-755-8981 8866 Fax: +86-755-8427 6832

Email & Skype: info@chipsmall.com Web: www.chipsmall.com

Address: A1208, Overseas Decoration Building, #122 Zhenhua RD., Futian, Shenzhen, China



Customer Information Sheet

DRAWING No.: M90-602XX45

SHEET 2 OF 2

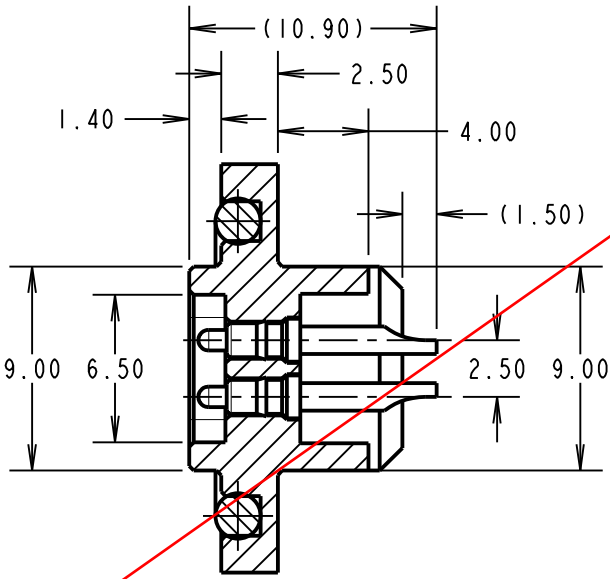
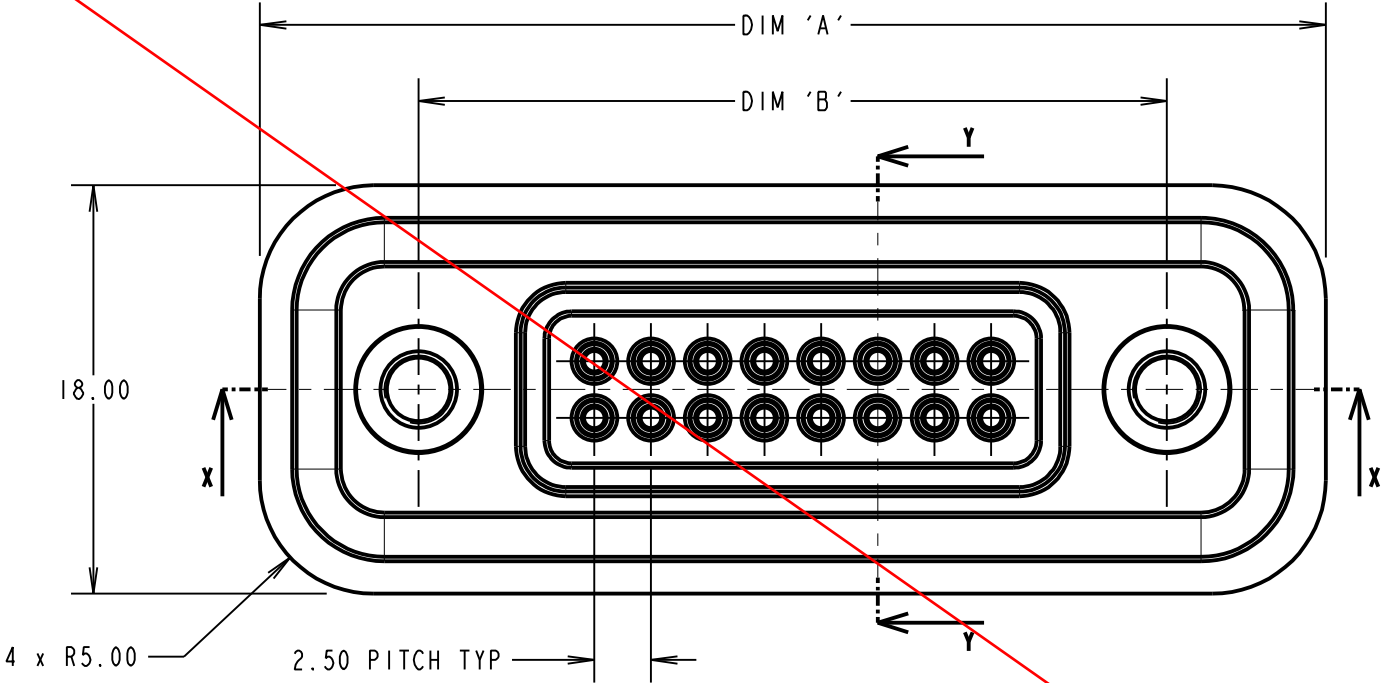
IF IN DOUBT - ASK

©

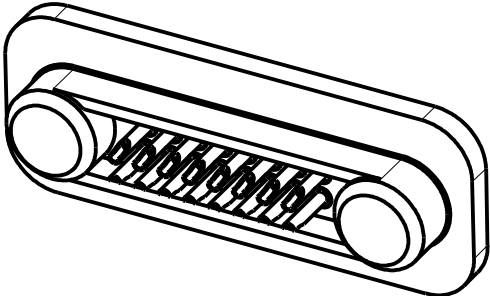
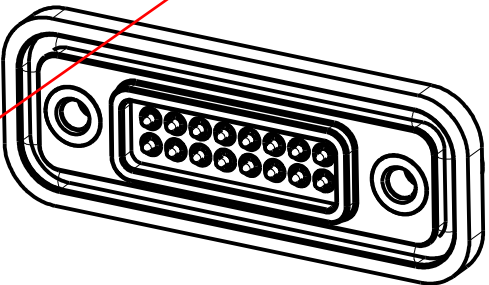
NOT TO SCALE

THIRD ANGLE PROJECTION

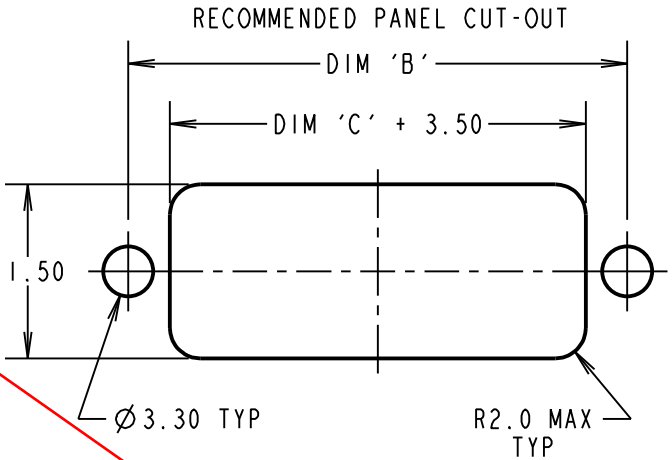
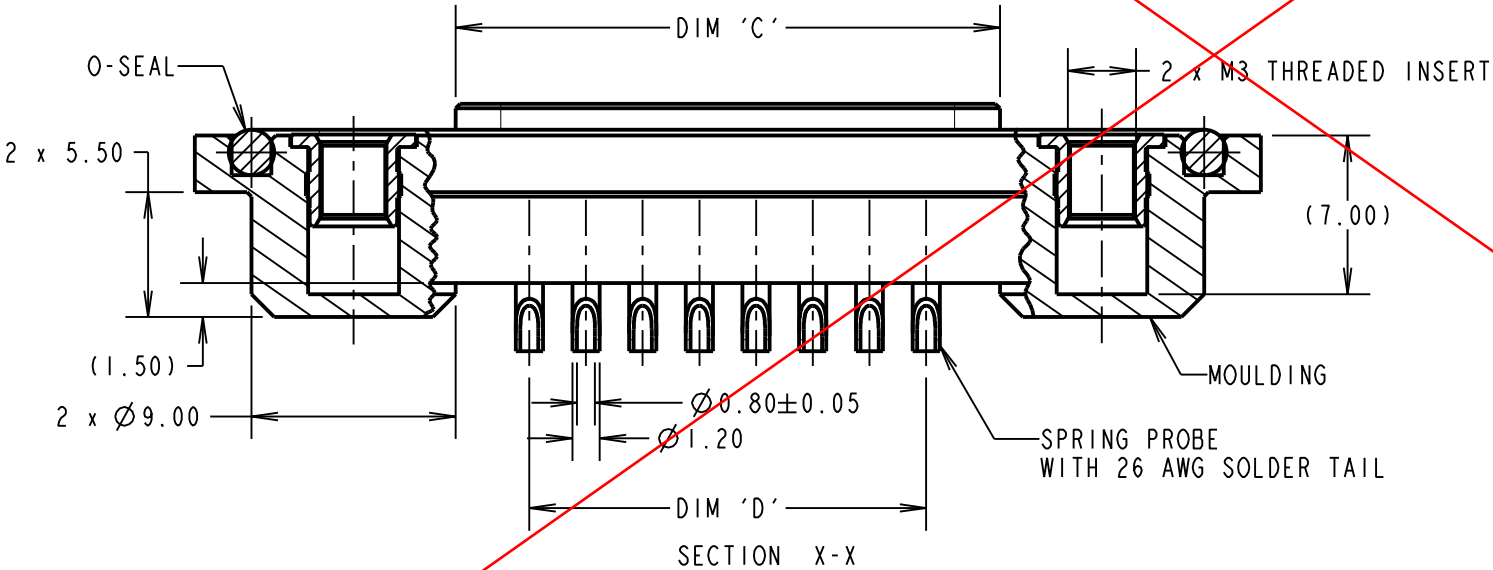
ALL DIMENSIONS IN mm



SECTION Y-Y



OBSOLETE



SPECIFICATION:
MATERIAL:
O-SEAL: THERMOPLASTIC ELASTOMER, 35 SHORE A
MOULDING: 30% GLASS FILLED POLYAMIDE 46, UL94V-0, BLACK
SPRING PROBE BODY + PISTON: BRASS
SPRING: STEEL
THREADED INSERT: BRASS
FINISH:
SPRING PROBE:
BODY + PISTON = GOLD OVER NICKEL
SPRING = ZINC
ELECTRICAL:
CONTACT RATING: 1A
WORKING VOLTAGE: 240V DC
CONTACT RESISTANCE: 50 MILLIOHMS
INSULATION RESISTANCE: 1000 MEGOHMS MIN AT 500V DC
ENVIRONMENTAL:
OPERATING TEMPERATURE: -40°C TO +100°C

- NOTES:
- DRAWING SHOWS 16-WAY CONNECTOR.
 - RECOMMENDED BULKHEAD MOUNTING THICKNESS: 1.50mm.
 - RECOMMENDED MOUNTING SCREWS: M3x6 CSK.
 - SUITABLE FOR 26 AWG CABLE
 - MAXIMUM TORQUE FOR M3 x 6mm CSK MOUNTING SCREWS = 80cNM
WHEN CONNECTOR IS MOUNTED TO PANEL WITH DIAMETER 3.3 MAX FIXING HOLES.
 - WHEN FULLY MATED WITH FIXED CONNECTOR, MOUNTING FLANGES
WILL HAVE A GAP OF 3.5mm ±0.1mm TO ALLOW FOR PANEL THICKNESS.

PART No.	No. OF WAYS	DIMENSION			
		A	B	C	D
M90-6020845	8 WAY	37.0	23.00	14.00	7.50
M90-6021245	12 WAY	42.0	28.00	19.00	12.50
M90-6021645	16 WAY	47.0	33.00	24.00	17.50

MSP	7	21.04.15	12843
NAME	ISS.	DATE	C/NOTE
APPROVED: M.PERREN			
CHECKED: M.G.PLESTED			
DRAWN: S.FLOWER			
CUSTOMER REF.:			
ASSEMBLY DRG:			

HARWIN

www.harwin.com
technical@harwin.com

THIS DRAWING AND ANY INFORMATION OR DESCRIPTIVE MATTER SET OUT HEREON ARE CONFIDENTIAL AND COPYRIGHT PROPERTY OF THE HARWIN GROUP AND MUST NOT BE DISCLOSED, LOANED, COPIED OR USED FOR MANUFACTURING, TENDERING OR FOR ANY OTHER PURPOSE WITHOUT THEIR WRITTEN PERMISSION.

TOLERANCES
X. = ±1mm
X.X = ±0.50mm
X.XX = ±0.10mm
X.XXX = ±0.01mm
ANGLES = ±5°
UNLESS STATED

MATERIAL:
SEE SPECIFICATION
FINISH:
S/AREA: mm²

TITLE:
SPRING PROBE ASSEMBLY
WITH 26 AWG SOLDER TAILS
DRAWING NUMBER:
M90-602XX45
SHT 2 OF 2