



Chipsmall Limited consists of a professional team with an average of over 10 year of expertise in the distribution of electronic components. Based in Hongkong, we have already established firm and mutual-benefit business relationships with customers from,Europe,America and south Asia,supplying obsolete and hard-to-find components to meet their specific needs.

With the principle of “Quality Parts,Customers Priority,Honest Operation,and Considerate Service”,our business mainly focus on the distribution of electronic components. Line cards we deal with include Microchip,ALPS,ROHM,Xilinx,Pulse,ON,Everlight and Freescale. Main products comprise IC,Modules,Potentiometer,IC Socket,Relay,Connector.Our parts cover such applications as commercial,industrial, and automotives areas.

We are looking forward to setting up business relationship with you and hope to provide you with the best service and solution. Let us make a better world for our industry!



Contact us

Tel: +86-755-8981 8866 Fax: +86-755-8427 6832

Email & Skype: info@chipsmall.com Web: www.chipsmall.com

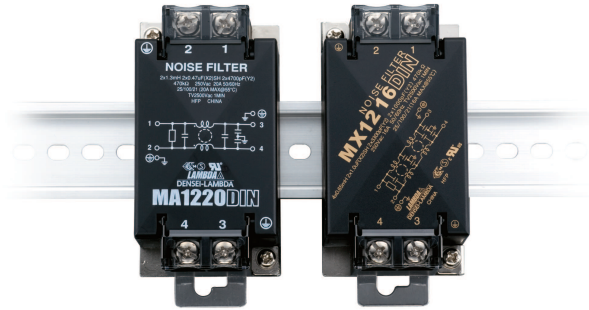
Address: A1208, Overseas Decoration Building, #122 Zhenhua RD., Futian, Shenzhen, China



6A to 30A, 250VAC EMI Filters

Features

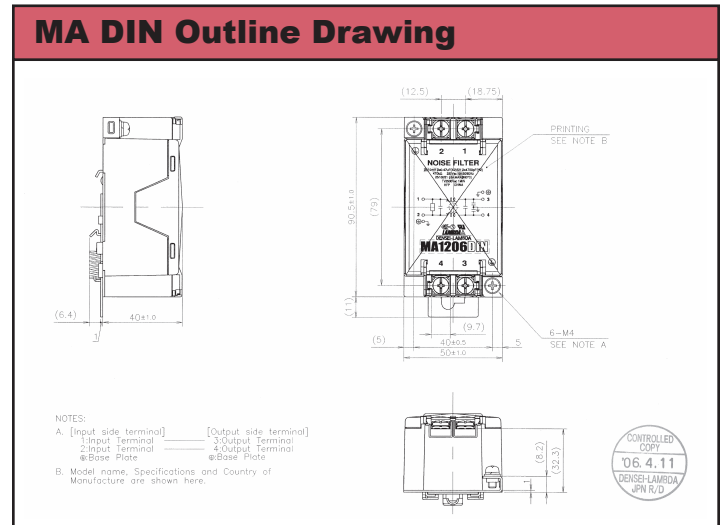
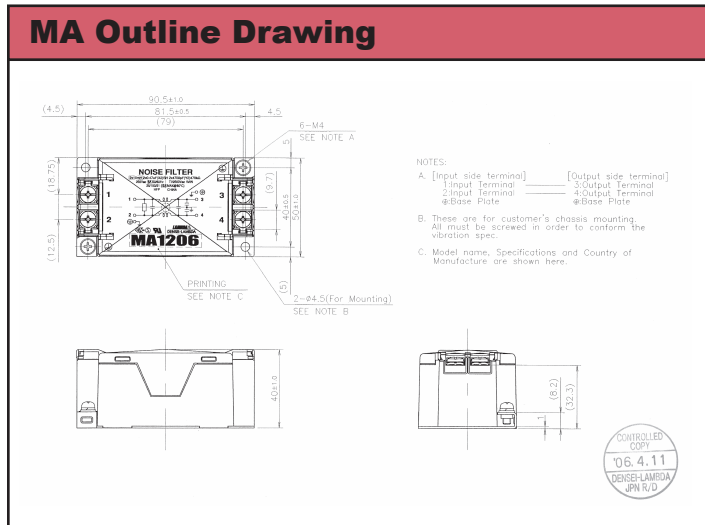
- ◆ Easy Connection and Installation
- ◆ Captive screws accepting ring tag terminals
- ◆ Chassis or DIN Rail mount
- ◆ Safety Agency Approved, RoHS Compliant
- ◆ MA series (single stage) Low frequency attenuation
- ◆ MX series (two stage) Wide band attenuation



Last time buy - June 1, 2014

Specifications						
Model		MA1206	MA1210	MA1216	MA1220	MA1230
		MX1206	MX1210	MX1216	MX1220	MX1230
Rated Current	A	6A	10A	16A	20A	30A
Rated Voltage	V	250VAC or VDC				
Test Voltage (For 1 min.)	V	Terminals to Case: 2500VAC at 25C, 70% RH				
Isolation Resistance	MΩ	100MΩ minimum at 70% RH (terminals to case, 500VDC)				
Leakage Current	mA	1mA max at 250VAC 60Hz				
DC Resistance (both lines) MA/MX	mΩ	120/130	50/65	20/20	14/14	6/7
Temperature Rise	°C	30°C Maximum				
Operating Temperature	°C	-40 to +85°C (see derating curve)				
Storage Temperature	°C	-40 to +85				
Operating Humidity	-	30 to 95% RH (non condensing)				
Storage Humidity	-	10 to 95% RH (non condensing)				
Vibration (non operating)	-	10-55-10Hz sweep for 1 min. Amplitude 1.5mm constant (max 88.3m/s ² , X, Y, Z 2 hours each)				
Safety Standards	-	Approved by UL1283, CSA Std C22.2 No.8 (CUL)(1), EN60939 (SEMKO)				
Size WxLxH	mm	50 x 90.5 x 40 (50 x 101.5 x 46.4 with DIN Rail mounting clip)				
Weight (Typ)	g	280 (290 for DIN Rail mount versions)				
Warranty	-	1 Year				

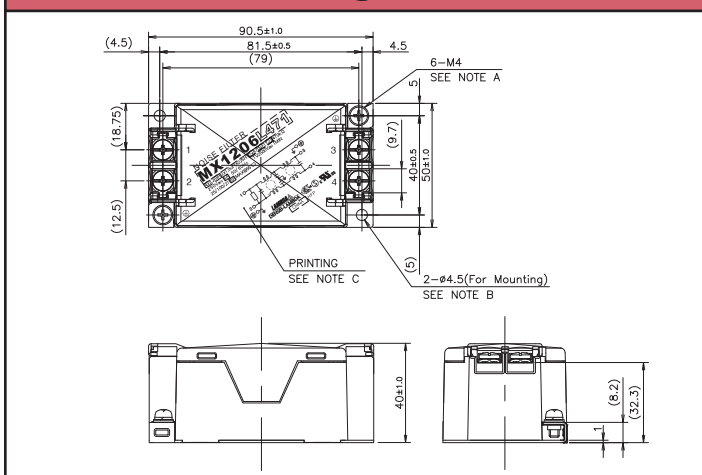
(1) MX12 only



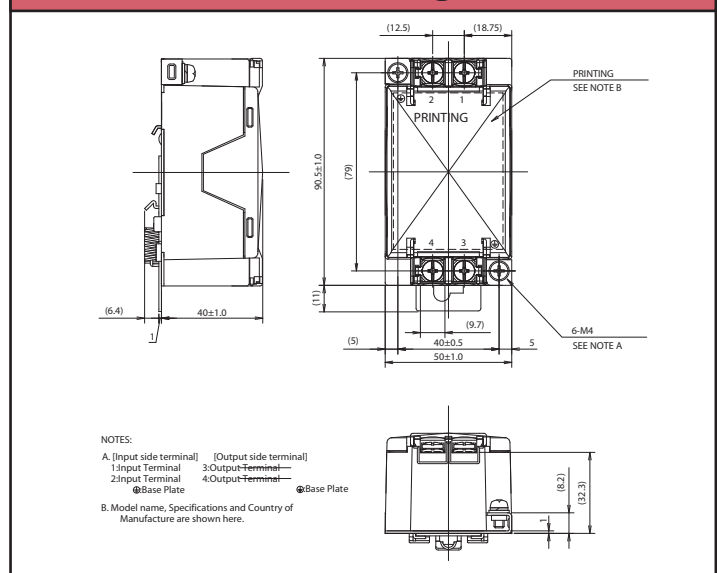
Model Selector

Model	Current Rating	Leakage Current (250VAC 60Hz)	Attenuation Characteristic	Mounting
MA1206	6A		Low Frequency (150 - 500kHz)	Chassis
MA1206DIN	6A		Low Frequency (150 - 500kHz)	DIN Rail
MX1206	6A		Wide band (150kHz - 30MHz)	Chassis
MX1206DIN	6A		Wide band (150kHz - 30MHz)	DIN Rail
MA1210	10A		Low Frequency (150 - 500kHz)	Chassis
MA1210DIN	10A		Low Frequency (150 - 500kHz)	DIN Rail
MX1210	10A		Wide band (150kHz - 30MHz)	Chassis
MX1210DIN	10A		Wide band (150kHz - 30MHz)	DIN Rail
MA1216	16A		Low Frequency (150 - 500kHz)	Chassis
MA1216DIN	16A		Low Frequency (150 - 500kHz)	DIN Rail
MX1216	16A		Wide band (150kHz - 30MHz)	Chassis
MX1216DIN	16A		Wide band (150kHz - 30MHz)	DIN Rail
MA1220	20A		Low Frequency (150 - 500kHz)	Chassis
MA1220DIN	20A		Low Frequency (150 - 500kHz)	DIN Rail
MX1220	20A		Wide band (150kHz - 30MHz)	Chassis
MX1220DIN	20A		Wide band (150kHz - 30MHz)	DIN Rail
MA1230	30A		Low Frequency (150 - 500kHz)	Chassis
MA1230DIN	30A		Low Frequency (150 - 500kHz)	DIN Rail
MX1230	30A		Wide band (150kHz - 30MHz)	Chassis
MX1230DIN	30A		Wide band (150kHz - 30MHz)	DIN Rail

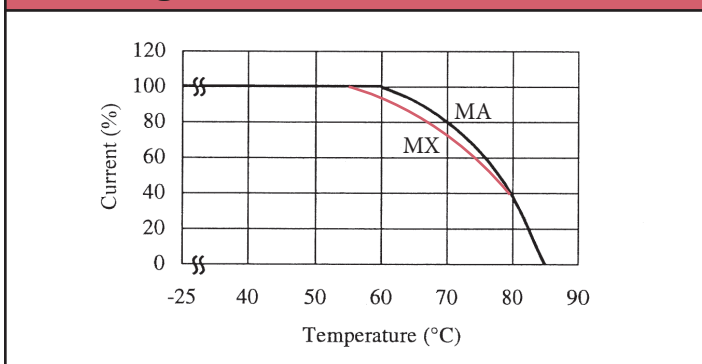
MX Outline Drawing



MX DIN Outline Drawing



Derating



Other Filter Solutions

MAW	0.5 - 5A, 250VAC filters (wire ended)
MC13	6 - 30A, 500VAC 3 phase filters
MX13	30 - 150A, 3 phase filters
MBS	30 & 50A, 75VDC filters
PAN	20A, 75VDC filters (pcb mount)

For Additional Information, please visit us.tdk-lambda.com/lp/products/ma-mx12-series.htm



Last time buy - June 1, 2014