



Chipsmall Limited consists of a professional team with an average of over 10 year of expertise in the distribution of electronic components. Based in Hongkong, we have already established firm and mutual-benefit business relationships with customers from,Europe,America and south Asia,supplying obsolete and hard-to-find components to meet their specific needs.

With the principle of “Quality Parts,Customers Priority,Honest Operation,and Considerate Service”,our business mainly focus on the distribution of electronic components. Line cards we deal with include Microchip,ALPS,ROHM,Xilinx,Pulse,ON,Everlight and Freescale. Main products comprise IC,Modules,Potentiometer,IC Socket,Relay,Connector.Our parts cover such applications as commercial,industrial, and automotives areas.

We are looking forward to setting up business relationship with you and hope to provide you with the best service and solution. Let us make a better world for our industry!



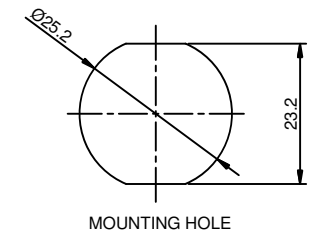
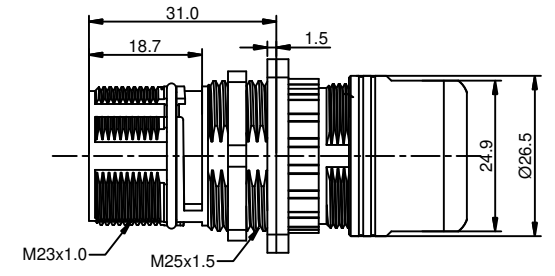
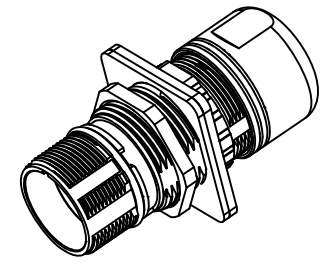
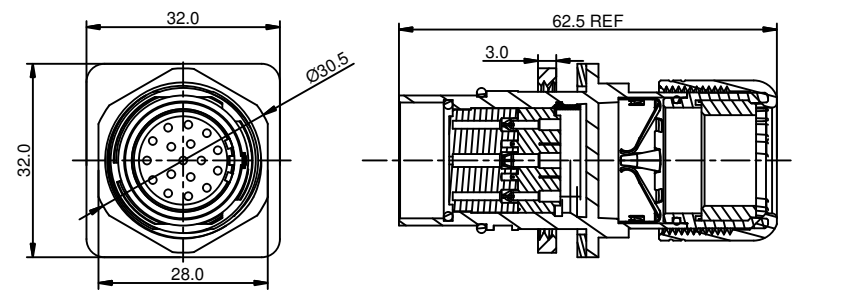
## Contact us

Tel: +86-755-8981 8866 Fax: +86-755-8427 6832

Email & Skype: info@chipsmall.com Web: www.chipsmall.com

Address: A1208, Overseas Decoration Building, #122 Zhenhua RD., Futian, Shenzhen, China





REVISIONS					
REV	ECO	DESCRIPTION	DATE	BY	APPR
B1	-	RELEASE NEW DWG FORMAT	Jul.15,2014	Tod	Tommy
B2	-	UPDATE THE DURABILITY	Jun.27,2015	Drack	Tommy
B3	-	UPDATED	08DEC15	MRF	Tommy

		Cable OD Range
1	MA3TNxxx00-S1	4.5-7.5 mm
2	MA3TNxxx00-S2	7.5-11.0 mm
3	MA3TNxxx00-S3	11.0-15.0 mm

REV	ECO	DESCRIPTION	DATE	BY	APPR
-		MA3TNP1900-S3	M23, RECP, BULKHEAD, 19POS, P TYPE		27
-		MA3TNP1900-S2	M23, RECP, BULKHEAD, 19POS, P TYPE		26
-		MA3TNP1900-S1	M23, RECP, BULKHEAD, 19POS, P TYPE		25
-		MA3TNE1900-S3	M23, RECP, BULKHEAD, 19POS, E TYPE		24
-		MA3TNE1900-S2	M23, RECP, BULKHEAD, 19POS, E TYPE		23
-		MA3TNE1900-S1	M23, RECP, BULKHEAD, 19POS, E TYPE		22
-					21
-		MA3TNP1700-S3	M23, RECP, BULKHEAD, 17POS, P TYPE		20
-		MA3TNP1700-S2	M23, RECP, BULKHEAD, 17POS, P TYPE		19
-		MA3TNP1700-S1	M23, RECP, BULKHEAD, 17POS, P TYPE		18
-		MA3TNE1700-S3	M23, RECP, BULKHEAD, 17POS, E TYPE		17
-		MA3TNE1700-S2	M23, RECP, BULKHEAD, 17POS, E TYPE		16
-		MA3TNE1700-S1	M23, RECP, BULKHEAD, 17POS, E TYPE		15
-					14
-		MA3TNP1600-S3	M23, RECP, BULKHEAD, 16POS, P TYPE		13
-		MA3TNP1600-S2	M23, RECP, BULKHEAD, 16POS, P TYPE		12
-		MA3TNP1600-S1	M23, RECP, BULKHEAD, 16POS, P TYPE		11
-		MA3TNE1600-S3	M23, RECP, BULKHEAD, 16POS, E TYPE		10
-		MA3TNE1600-S2	M23, RECP, BULKHEAD, 16POS, E TYPE		9
-		MA3TNE1600-S1	M23, RECP, BULKHEAD, 16POS, E TYPE		8
-					7
-		MA3TNP1200-S3	M23, RECP, BULKHEAD, 12POS, P TYPE		6
-		MA3TNP1200-S2	M23, RECP, BULKHEAD, 12POS, P TYPE		5
-		MA3TNP1200-S1	M23, RECP, BULKHEAD, 12POS, P TYPE		4
-		MA3TNE1200-S3	M23, RECP, BULKHEAD, 12POS, E TYPE		3
-		MA3TNE1200-S2	M23, RECP, BULKHEAD, 12POS, E TYPE		2
-		MA3TNE1200-S1	M23, RECP, BULKHEAD, 12POS, E TYPE		1

QUANTITY	PART NUMBER	DESCRIPTION	ITEM
----------	-------------	-------------	------

MATERIALS LIST			
UNLESS OTHERWISE SPECIFIED		SIGNATURES	DATE
1) All dimensions are in metric(mm). 2) Tolerances are as follows: 1 PL DEC ±0.30 2 PL DEC ±0.15 3 PL DEC ±0.08		Drack	Jun.27,2015
3) Note reference =		CHECKED:	
		ENGINEER:	
		APPROVAL:	
MATERIAL SPECIFICATIONS:		CUSTOMER:	
PROCESS SPECIFICATIONS:		THIS DRAWING IS SUPPLIED FOR INFORMATION ONLY. DESIGN FEATURES, SPECIFICATIONS AND PERFORMANCE DATA SHOWN HEREON ARE THE PROPERTY OF THE AMPHENOL CORPORATION. NO RIGHTS OF REPRODUCTION ARE IMPLIED. ALL DIMENSIONS ARE SUBJECT TO NORMAL MANUFACTURING VARIATIONS.	
NEXT ASSY:		SCALE: NONE	

# Amphenol

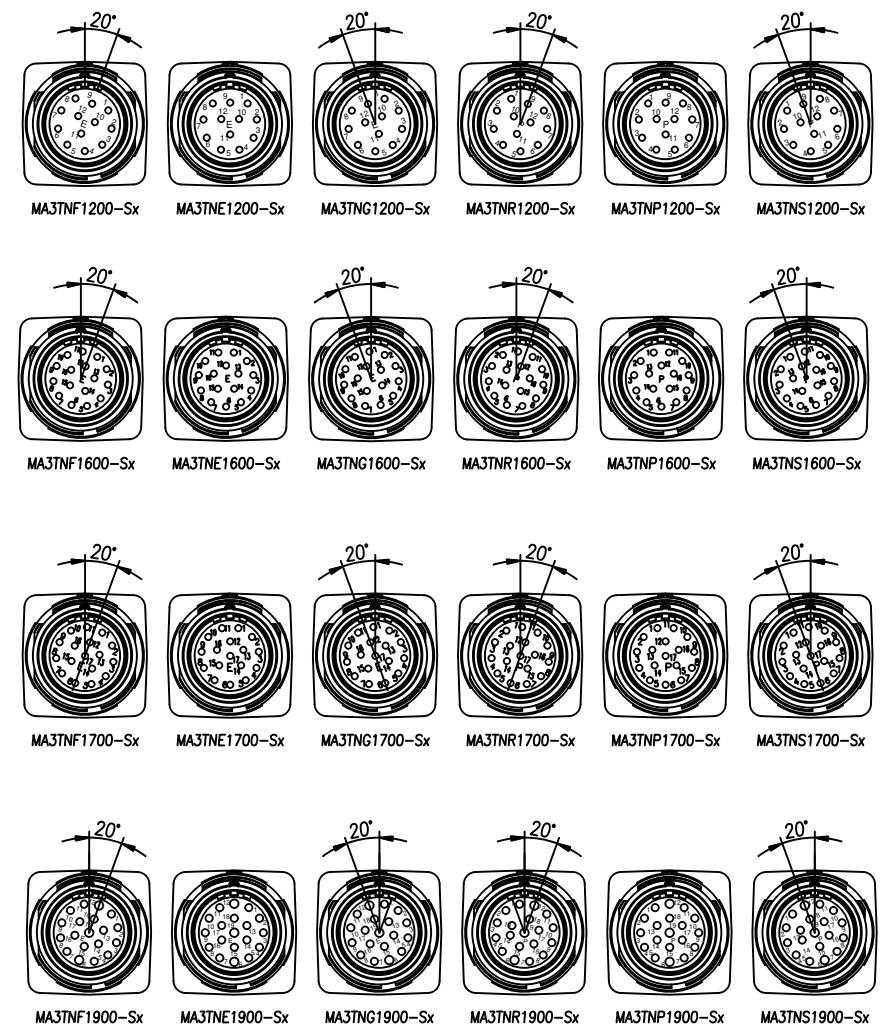
Sine Systems - www.amphenol-sine.com  
44724 Morley Drive  
Clinton Township, MI 48036

**M23, RECP, BULKHEAD, THREADED**

SIZE	TYPE	DWG NO.	REVISION
B	C-	MA3TNxxx00-Sx	B3

C-MA3TNxxx00-Sx SHEET 1 OF 1

- NOTES: UNLESS OTHERWISE SPECIFIED
- MATERIAL:  
INSULATION INSERT: PA66,UL94 V0  
SEAL: VITON  
HOUSING BODY: ZINC DIE CAST, NICKEL PLATED
  - SPECIFICATIONS:
    - CURRENT RATING: 10 AMPS - 12 POSITION  
9 AMPS - 16 POSITION  
9 AMPS - 17 POSITION  
7 AMPS - 19 POSITION
    - VOLTAGE RATING: 160V AC/DC - 12 POSITION  
125V AC/DC - 16 POSITION  
125V AC/DC - 17 POSITION  
63V AC/DC - 19 POSITION
    - OPERATING TEMPERATURE: -20°C TO +130°C
    - DIELECTRIC WITHSTANDING VOLTAGE: LESS THAN 2 MILLIAMPS CURRENT LEAKAGE @ 2500 VOLTS AC.
    - DEGREE OF PROTECTION: IP67 ( MATED CONDITION )
    - DEGREE OF POLLUTION: 3 PER UL840
    - OVERVOLTAGE CATEGORY: III PER UL840
    - MATING CYCLE DURABILITY: >500 CYCLES
    - RoHS COMPLIANT
  - ALL DIMENSIONS ARE FOR REFERENCE USE ONLY.



TITLE: M23, RECP, BULKHEAD, THREADED  
DWG NO.: MA3TNxxx00-Sx  
REV: B3  
SH: 1  
OF: 1