



Chipsmall Limited consists of a professional team with an average of over 10 year of expertise in the distribution of electronic components. Based in Hongkong, we have already established firm and mutual-benefit business relationships with customers from,Europe,America and south Asia,supplying obsolete and hard-to-find components to meet their specific needs.

With the principle of “Quality Parts,Customers Priority,Honest Operation,and Considerate Service”,our business mainly focus on the distribution of electronic components. Line cards we deal with include Microchip,ALPS,ROHM,Xilinx,Pulse,ON,Everlight and Freescale. Main products comprise IC,Modules,Potentiometer,IC Socket,Relay,Connector.Our parts cover such applications as commercial,industrial, and automotives areas.

We are looking forward to setting up business relationship with you and hope to provide you with the best service and solution. Let us make a better world for our industry!



Contact us

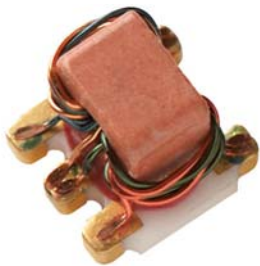
Tel: +86-755-8981 8866 Fax: +86-755-8427 6832

Email & Skype: info@chipsmall.com Web: www.chipsmall.com

Address: A1208, Overseas Decoration Building, #122 Zhenhua RD., Futian, Shenzhen, China



MABA-000001-50KIT1 Designer's Kit



Delivering designer's kits...
transformers ranging from 1 to 3000 MHz

Features:

- Very wide bandwidth
- Termination finish, both gold over nickel plated and tin plated
- Various surface mount parts
- Aqueous washable
- RoHS compliant

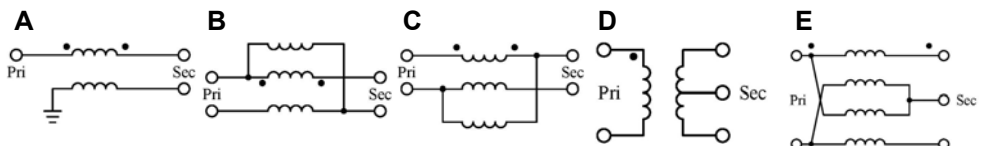
Competitive pricing - Call for quotes

Each kit contains 15 models, 10 of each, 150 total

MABA-000001-50KIT1 Electrical Specifications of each model

Part Number	Ω Ratio	Specified Freq (MHz)	Insertion Loss			Configuration
			3 dB MHz	2 dB MHz	1 dB MHz	
MABA-009180-500MHZ	1:1	3-500	0.40-500	0.50-300	1-100	D
ETC1-1-6TR	1:1	760-960	-	760-960	-	C
ETC1-1-10TR	1:1	1710-1910	-	1710-1910	-	B
MABA-009602-ES2922	1:1	5-1200	-	600-1200	5-600	C
MABA-007159-000000	1:1	4.5-3000	2000-2800	1000-2000	4.5-1000	A
MABA-010125-TC1113	1:1	4.5-3000	2000-3000	1000-2000	4.5-1000	A
MABA-009250-CT0068	1:2	1-350	-	-	3-300	D
MABA-009484-ETC31T	1:3	2-500	-	-	2-500	D
MABAES0061	1:4	3-800	2-800	5-600	10-100	D
MABA-009711-ETK2MM	1:4	2-1000	700-1000	500-700	3-500	E
MABA-008639-TC41T7	1:4	6-1000	600-1000	6-600	-	E
MABA-007236-C16423	1:4	500-2500	500-3000	-	750-1200	E
MABA-010143-FLUX18	1:8	2-500	-	2-500	-	D
ETC9-1T-5TR	1:9	10-75	-	10-75	-	D
ETC16-1T-2TR	1:16	5-40	-	-	5-40	D

Configurations:



M/A-COM Technology Solutions Inc.

- Lowell, Massachusetts 01851
- North America 800.366.2266
 - Europe +353.21.244.6400
 - India +91.80.43537383
 - China +86.21.2407.1588

www.macomtech.com

The First Name in Microwave