



Chipsmall Limited consists of a professional team with an average of over 10 year of expertise in the distribution of electronic components. Based in Hongkong, we have already established firm and mutual-benefit business relationships with customers from,Europe,America and south Asia,supplying obsolete and hard-to-find components to meet their specific needs.

With the principle of “Quality Parts,Customers Priority,Honest Operation,and Considerate Service”,our business mainly focus on the distribution of electronic components. Line cards we deal with include Microchip,ALPS,ROHM,Xilinx,Pulse,ON,Everlight and Freescale. Main products comprise IC,Modules,Potentiometer,IC Socket,Relay,Connector.Our parts cover such applications as commercial,industrial, and automotives areas.

We are looking forward to setting up business relationship with you and hope to provide you with the best service and solution. Let us make a better world for our industry!



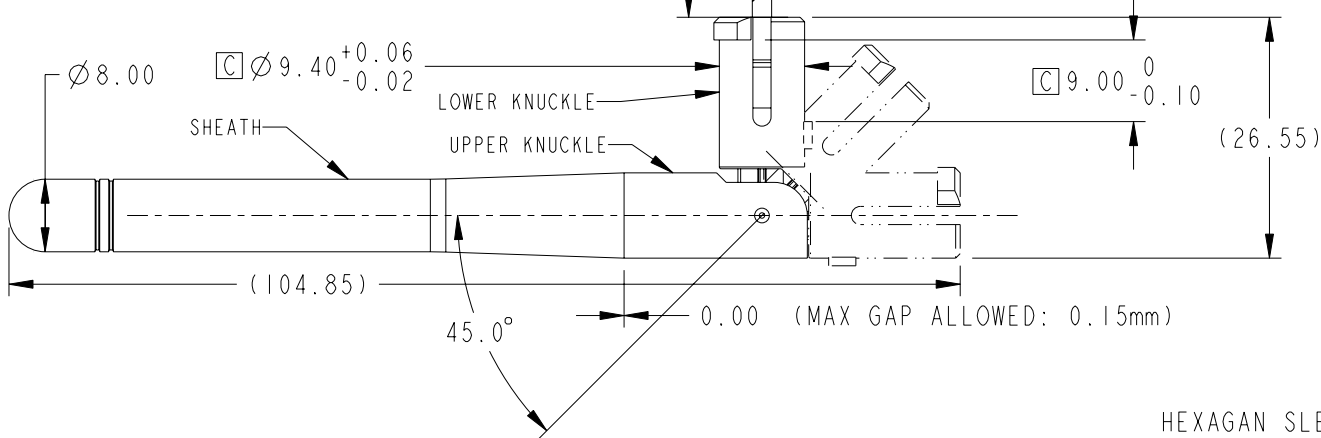
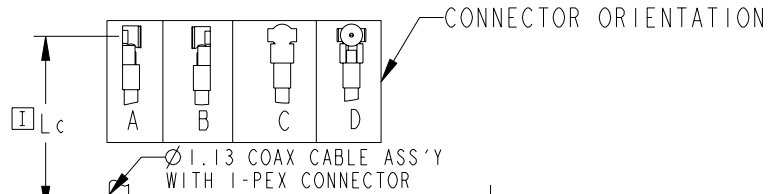
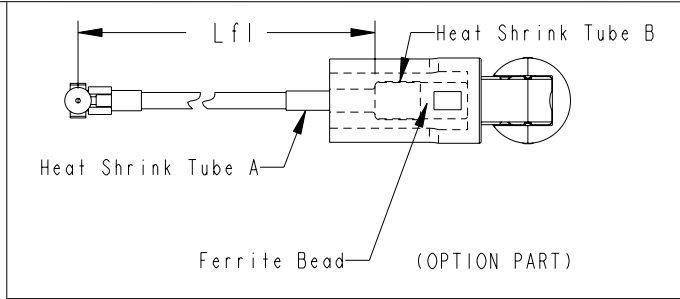
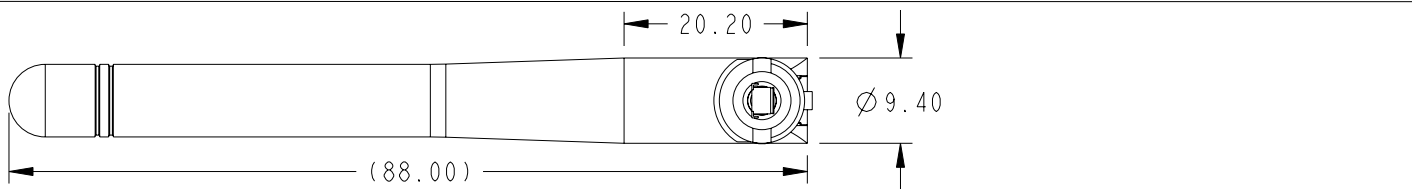
## Contact us

Tel: +86-755-8981 8866 Fax: +86-755-8427 6832

Email & Skype: info@chipsmall.com Web: www.chipsmall.com

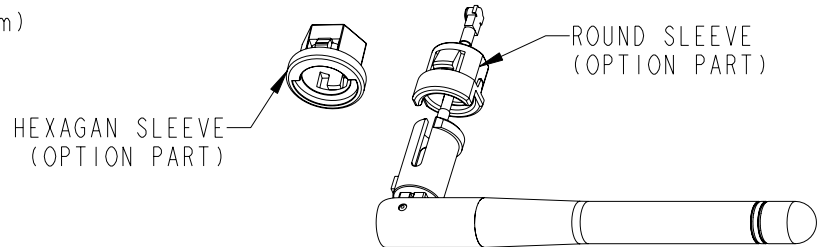
Address: A1208, Overseas Decoration Building, #122 Zhenhua RD., Futian, Shenzhen, China





**APPROVED**


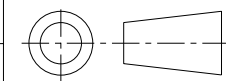
FREQUENCY RANGE	2.4-2.5GHz
IMPEDANCE	50 ohms
VSWR	<2.0:1



TOLERANCE (UNLESS STATED)	X = ±0.3	SYM	ECO/DESCRIPTION	DATE	CK	APP	 ANTENNA SBU PENANG, MALAYSIA	DRAWN BY: TL KHOO			
	XX = ±0.13							CHECKED BY: GJ CHIN			
- PRODUCT & PROCESS MUST COMPLY TO LT-GES - MISSING INFORMATION REFER TO 3D DATA - DIMENSIONS ARE IN MILLIMETERS UNLESS STATED OTHERWISE - THIS DRAWING WAS GENERATED VIA PRO/ENGINEER - PRINT NOT TO SCALE		(F06)	ECO-00403	20/6/08	CHIN	GERALD	CONFIDENTIAL THE INFORMATION CONTAINED IN THIS DOCUMENT IS OF PROPRIETARY NATURE. IT MAY NOT BE REPRODUCED OR USED WITHOUT EXPRESS WRITTEN PERMISSION OF LAIRD TECHNOLOGIES, ANTENNA SBU	DWG. NO.:	PG.	REV	
		(F07)	ECO-00428	07/08/08	KHOO	FONG		MAF95102	1/4	F10	
		(F08)	ECO-00531	6/4/09	KHOO	CHIN		DESCRIPTION: REDANG SNAP IN MASTER PRINT, WRR SERIES	MATERIAL: N/A		
		(F09)	ECO-00556	28/7/09	KHOO	CHIN					
		(F10)	CRN #984	22/5/13	HANG	TEOH	© 2007 LAIRD TECHNOLOGIES	PROJECT NO. R.TBL	DATE: 08/10/07	SCALE:	UNITS: MM

No	FG NO.	Rev	Description	Project#	Lc/±5	Lfl	Connector Orientation	Connector part no.	Antenna Color	Sleeve	Ferrite Bead
1	MAF94049	C1	REDANG DIPOLE SNAP-IN (IPEX)	CWC0031	125	(20)	A	MAP30105	ST Black (PC30020)	NIL	MAP58006
2	MAF94065	C2	REDANG SINGLE-BAND SNAP-IN (IPEX)	CWC0031	130	(20)	A	MAP30105	ST Black (PC30020)	NIL	MAP58010
3	MAF94068	C1	REDANG DIPOLE SNAP-IN (IPEX)	CWC0031	65	(20)	A	MAP30105	ST Black (PC30020)	NIL	MAP58006
4	MAF94141	C1	REDANG SNAP IN SB (GREY)	CWC0112	130	(133)	A	MAP30105	DK Gray (PC30277)	MAP44035 ROUND SLEEVE	MAP58006
5	MAF94151	C1	REDANG SNAP IN SB (RAL9003 WHITE)	CWC0112	130	(133)	A	MAP30105	White (PC20053)	NIL	MAP58006
6	MAF94156	C1	REDANG SNAP IN SB (STANDARD BLACK)	CWC0112	130	(133)	A	MAP30105	ST Black (PC30020)	MAP44002 ROUND SLEEVE	MAP58006
7	MAF94164	C1	REDANG SNAP IN SB (ANTHRACITE COLOR)	CWC0112	130	(133)	A	MAP30105	Anthracite (PC30287)	NIL	MAP58006
8	MAF94177	C1	REDANG SNAP IN SB (STANDARD BLACK)	CWC0112	130	(133)	A	MAP30105	ST Black (PC30020)	NIL	MAP58006
9	MAF94225	C1	REDANG WLAN ANTENNA	CWC0076	35	N/A	C	MAP30105	ST Black (PC30020)	MAP44015 HEXAGON SLEEVE	NIL
10	MAF94385	C1	REDANG DIPOLE SNAP-IN (IPEX)	CWC0031	100.0	N/A	A	MAP30105	ST Black (PC30020)	NIL	NIL
11	MAF94386	C1	REDANG SNAP IN SINGLE BAND	CWC0031	280.0	N/A	A	MAP30105	ST Black (PC30020)	MAP44002 ROUND SLEEVE	NIL
12	MAF94402	C1	REDANG SNAP IN SB (GREY)	CWC0270	100.0	NA	A	MAP30105	DK Gray (PC30277)	NIL	NIL
13	MAF94403	C1	REDANG WLAN ANTENNA	CWC0270	200.0	N/A	C	MAP30105	ST Black (PC30020)	MAP44002 ROUND SLEEVE	NIL
14	MAF94404	C1	REDANG WLAN ANTENNA	CWC0270	600.0	N/A	C	MAP30105	ST Black (PC30020)	MAP44002 ROUND SLEEVE	NIL
15	MAF94436	C1	REDANG SNAP IN SINGLE BAND	CWC0031	280.0	N/A	A	MAP30105	ST Black (PC30020)	NIL	NIL

(F06) NOTE: 1. ALL COAX CABLE IS  $\varnothing 1.13$  UNLESS SPECIFIED  
2. DK GRAY IS BASED ON PANTONE COOL GRAY 9

TOLERANCE (UNLESS STATED)	X = ±0.3	SYM	ECO/DESCRIPTION	DATE	CK	APP	 ANTENNA SBU PENANG, MALAYSIA	DRAWN BY: TL KHOO		
	XX = ±0.13							CHECKED BY: GJ CHIN		
- PRODUCT & PROCESS MUST COMPLY TO LT-GES - MISSING INFORMATION REFER TO 3D DATA - DIMENSIONS ARE IN MILLIMETERS UNLESS STATED OTHERWISE - THIS DRAWING WAS GENERATED VIA PRO/ENGINEER - PRINT NOT TO SCALE			<div style="border: 2px solid green; padding: 5px; display: inline-block;"> <b>APPROVED</b> </div>	<small>CONFIDENTIAL</small> THE INFORMATION CONTAINED IN THIS DOCUMENT IS OF PROPRIETARY NATURE. IT MAY NOT BE REPRODUCED OR USED WITHOUT EXPRESS WRITTEN PERMISSION OF LAIRD TECHNOLOGIES, ANTENNA SBU			DWG. NO.: MAF95102	PG. 2/4	REV F10	
DESCRIPTION: REDANG SNAP IN MASTER PRINT, WRR SERIES				MATERIAL: N/A		© 2007 LAIRD TECHNOLOGIES	PROJECT NO. R.TBL	DATE: 08/10/07	SCALE:	UNITS: MM