



Chipsmall Limited consists of a professional team with an average of over 10 year of expertise in the distribution of electronic components. Based in Hongkong, we have already established firm and mutual-benefit business relationships with customers from,Europe,America and south Asia,supplying obsolete and hard-to-find components to meet their specific needs.

With the principle of "Quality Parts,Customers Priority,Honest Operation,and Considerate Service",our business mainly focus on the distribution of electronic components. Line cards we deal with include Microchip,ALPS,ROHM,Xilinx,Pulse,ON,Everlight and Freescale. Main products comprise IC,Modules,Potentiometer,IC Socket,Relay,Connector.Our parts cover such applications as commercial,industrial, and automotives areas.

We are looking forward to setting up business relationship with you and hope to provide you with the best service and solution. Let us make a better world for our industry!



## Contact us

Tel: +86-755-8981 8866 Fax: +86-755-8427 6832

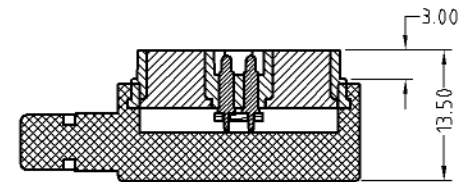
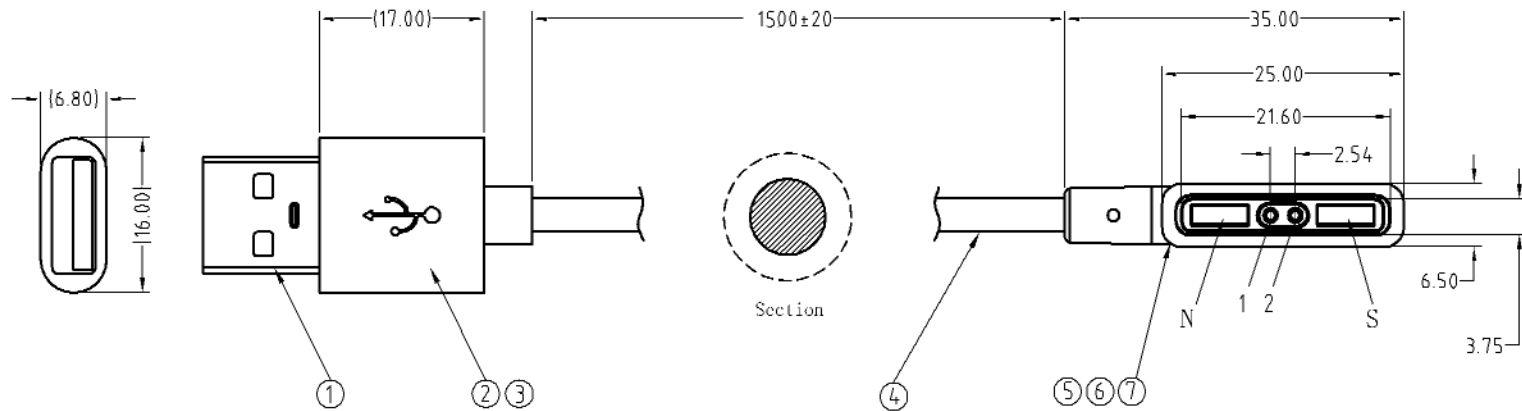
Email & Skype: info@chipsmall.com Web: www.chipsmall.com

Address: A1208, Overseas Decoration Building, #122 Zhenhua RD., Futian, Shenzhen, China



**PROPRIETARY INFORMATION:**  
 PROPRIETARY OF GLOBTEK, INC. ANY REPRODUCTION, DISCLOSURE OR  
 USE OF THIS DRAWING, IN WHOLE OR IN PART, IS HEREBY  
 PROHIBITED EXCEPT AS SPECIFIED IN WRITING BY GLOBTEK, INC.

REVISION			
REV	DESCRIPTION	DATE	APPROVED
A	INITIAL RELEASE, RFS. 26876	08/23/17	DR



7	Magnet Connector
6	Lucency PE 3g
5	Black PVC UL94 V-0 4g
4	OD3.5 2Cx20 AWG Black Jacket PVC 55P 1500 mm
3	Black PVC UL94 V-0 4g
2	Lucency PE 3g
1	USB/AM 0.025 mmAu Black salt spray test 48H
(NO)	(Specification)

USB → CONN
Vcc_1 --- 1 Red
GND_4 --- 4 Black

**RELEASED**  
 By N.Frost at 3:48 pm, Aug 31, 2017

**Note:**  
**Mechanical:**  
 Contact force: 70g±20g at 1.0 mm working stroke  
 Full stroke: 1.40 mm  
 Life test: 50,000 cycles  
**Electrical:**  
 Rated current & voltage: DC 12V, 2A Max.  
 Contact resistance: 50 milliohm Max.  
 100% open & short test



DASH NO.	PART NO	REV.	DESCRIPTION	NOTES
<b>TABULATION BLOCK</b>				
INIT.BY: DR		DATE: 08/23/17	<b>GlobTek, Inc.</b> 186 Veterans Dr. Northvale, NJ 07647 www.globtek.com Tel. 201-784-1000 Fax 201.784.0111	
DRAWN: NF		DATE: 08/23/17	DWG TITLE: MAGNETIC CABLE CONNECTOR	
APRVD: DR		DATE: 08/23/17	REV. A	
SCALE: NONE			PART NO: <b>MAG2C2A11851M5USBA(R)</b>	SHEET 1/1

**Foot Note:**  
 Globtek Inc. will not be liable for the safety and performance of these power product if unauthorized access and repair occurs. End user should consult the applicable UL, CSA or EN Standards for proper installation instruction.

**Limitation of Use:**  
 Globtek product are not authorized for use as mission critical components in life support, hazardous environment, nuclear or aircraft applications without prior written approval from the CEO of Globtek Inc.

Contents of this document are subject to change without prior notice