



Chipsmall Limited consists of a professional team with an average of over 10 year of expertise in the distribution of electronic components. Based in Hongkong, we have already established firm and mutual-benefit business relationships with customers from,Europe,America and south Asia,supplying obsolete and hard-to-find components to meet their specific needs.

With the principle of “Quality Parts,Customers Priority,Honest Operation,and Considerate Service”,our business mainly focus on the distribution of electronic components. Line cards we deal with include Microchip,ALPS,ROHM,Xilinx,Pulse,ON,Everlight and Freescale. Main products comprise IC,Modules,Potentiometer,IC Socket,Relay,Connector.Our parts cover such applications as commercial,industrial, and automotives areas.

We are looking forward to setting up business relationship with you and hope to provide you with the best service and solution. Let us make a better world for our industry!



Contact us

Tel: +86-755-8981 8866 Fax: +86-755-8427 6832

Email & Skype: info@chipsmall.com Web: www.chipsmall.com

Address: A1208, Overseas Decoration Building, #122 Zhenhua RD., Futian, Shenzhen, China





MAX11008 Evaluation Kit/ Evaluation System

Evaluate: MAX11008

General Description

The MAX11008 evaluation kit (EV kit) is an assembled and tested circuit board that demonstrates the MAX11008 dual RF LDMOS CODEC smart regulator for LDMOS FET bias control. Windows® 98/2000/XP software provides a handy user interface to exercise the features of the MAX11008.

Windows is a registered trademark of Microsoft Corp.

Features

- ◆ Proven PCB Layout
- ◆ Complete Evaluation System
- ◆ Convenient On-Board Test Points
- ◆ Data-Logging Software
- ◆ Lead(Pb)-Free and RoHS Compliant
- ◆ Fully Assembled and Tested

Component List

MAX11008EVC16 System Component List

PART	QTY	DESCRIPTION
MAX11008EVKIT+	1	MAX11008 EV kit
HSI2CMOD	1	High-speed I ² C interface module
68HC16MODULE-DIP	1	68HC16 μ C module

Ordering Information

PART	TYPE	INTERFACE REQUIREMENTS
MAX11008EVKIT+	EV Kit	User-provided I ² C interface
MAX11008EVC16	EV Sys	Windows PC with RS-232 serial port

+Denotes lead(Pb)-free and RoHS compliant.

Component List (continued)

MAX11008EVKIT Component List

DESIGNATION	QTY	DESCRIPTION
C4, C8, C10, C12, C16, C18, C26, C27	8	1 μ F \pm 20%, 25V X5R ceramic capacitors (0603) TDK C1608X5R1E105M
C5, C9, C11, C13, C14, C15, C24, C25, C28, C29	10	0.1 μ F \pm 20%, 16V X7R ceramic capacitors (0603) TDK C1608X7R1C104M
C6, C7	0	Not installed, ceramic capacitors (0603)
C17	1	10 μ F \pm 20%, 25V X7R ceramic capacitor (1210) TDK C3225X7R1E106M
C19	1	4.7 μ F \pm 20%, 6.3V X5R ceramic capacitor (0603) TDK C1608X5R0J475M
C20–C23	4	100pF \pm 10%, 50V C0G ceramic capacitors (0603) TDK C1608C0G1H101K

DESIGNATION	QTY	DESCRIPTION
D1, D2	2	nnp transistors (3 SOT23) Fairchild MMBT3904 Top mark: 1A
FB1	1	70 Ω , 4A ferrite bead (0603) Murata BLM1856700N1
J1	1	20-pin, 2 x 10 right-angle female receptacle
JU0–JU4	5	3-pin jumpers
JU5–JU20	16	2-pin jumpers
M1, M2	2	FETs, n-channel (TO-220AB) $V_{DS} = 55V$ (High V_{DS} \rightarrow Low g_m) $R_{DS(on)} = 0.024\Omega$ at $V_{DS} = 10V$ $I_D = 29A$ at $+100^\circ C$ International Rectifier IRFZ44N
R1, R2	2	1.00k Ω \pm 1% resistors (1206)
R3, R9	2	4.99k Ω \pm 1% resistors (1206)

MAX11008 Evaluation Kit/ Evaluation System

Component List (continued)

MAX11008EVKIT Component List (continued)

DESIGNATION	QTY	DESCRIPTION
R4	1	0Ω resistor (0603)
R5, R6	2	100Ω ±5% resistors (1206)
R7, R8	2	1.00Ω ±1% sense resistors (2010) Vishay (Dale) CRCW20101R00FNEF
R10, R11	2	0Ω resistors (1206)
R12, R13	2	10kΩ ±5% resistors (1206)
R14, R15	2	47Ω ±5% resistors (1206)
U1	1	Dual RF LDMOS CODEC (48 TQFN-EP*) Maxim 11008BETM+

DESIGNATION	QTY	DESCRIPTION
U2	1	2.5V voltage reference (8 SO) Maxim MAX6126AASA25+
U3	1	28V input linear regulator (5 SOT23) Maxim MAX1615EUK+T (Top Mark: ABZD)
—	21	Shunts
—	1	PCB: MAX11008 Evaluation Kit+

*EP = Exposed pad.

Component Suppliers

SUPPLIER	PHONE	WEBSITE
Fairchild Semiconductor	888-522-5372	www.fairchildsemi.com
International Rectifier	310-322-3331	www.irf.com
TDK Corp.	847-803-6100	www.component.tdk.com
Vishay	402-563-6866	www.vishay.com

Note: Indicate you are using the MAX11008 when contacting these component suppliers.

Quick Start

Required Equipment

- Maxim MAX11008EVC16 (contains MAX11008EVKIT+ board, HSI2CMOD, and 68HC16MODULE-DIP)
- DC power supply, 8V at 500mA
- DC power supply, 10V at 1000mA
- Windows 98/2000/XP computer with a spare serial (COM) port
- 9-pin I/O extension cable

Note: In the following sections, software-related items are identified by bolding. Text in **bold** refers to items directly from the EV kit software. Text in **bold and underlined** refers to items from the Windows operating system.

Procedure

The MAX11008 EV kit is fully assembled and tested. Follow the steps below to verify board operation. **Caution:** **Do not turn on the power until all connections are completed.**

- 1) Ensure that the MAX11008EVKIT jumpers are set in accordance with Table 1.

- 2) Carefully connect the boards by aligning the 40-pin header of the HSI2CMOD with the 40-pin connector of the 68HC16MODULE-DIP module. Gently press them together. The two boards should be flush against one another. Next, connect the MAX11008 EVKIT 20-pin connector to the HSI2CMOD board.
- 3) Connect the 8V DC power source to the 68HC16MODULE at the terminal block located next to the on/off switch, along the top edge of the module. Observe the polarity marked on the board.
- 4) Connect a cable from the computer's serial port to the 68HC16MODULE. If using a 9-pin serial port, use a straight-through, 9-pin female-to-male cable. If the only available serial port uses a 25-pin connector, a standard 25-pin to 9-pin adapter is required. The EV kit software checks the modem status lines (CTS, DSR, DCD) to confirm that the correct port has been selected.
- 5) Install the evaluation software on your computer by launching MAX11008.msi. (The latest software can be found at www.maxim-ic.com/evkitsoftware.) The program files are copied and icons are created for them in the Windows **Start** menu.

MAX11008 Evaluation Kit/ Evaluation System

- 6) Turn on the 8V DC power supply.
- 7) Start the MAX11008EVKIT program by opening its icon in the **Start** menu.
- 8) Click the **Connect** button to establish communications with the 68HC16MODULE and HSI2CMOD boards. The program prompts you to connect the μ C module and turn its power on. Slide SW1 to the ON position. Select the correct serial port, and click OK. The program automatically downloads its software to the module. (During connection, you will be asked to move the HSI2CMOD rev A board's jumper JU5 shunt.)
- 9) After successful connection, you will be prompted to read the EEPROM and perform a full reset. Answer YES to ensure that the software graphical user interface (GUI) and the working registers match the initial values stored in the MAX11008's nonvolatile EEPROM.
- 10) Bring up the **ADC / Control** tab.
- 11) Connect the 10V DC power supply to the MAX11008EVKIT's DRAIN1 (+) and SOURCE1 (-), leaving DRAIN2 and SOURCE2 unconnected.
Note: The power-supply grounds are connected through resistor R10.
- 12) Turn on the 10V DC power supply. FET M1 may begin drawing current. Adjust the channel 1 VGS OFFSET control until the drain current is 125mA. Keep a note of this board calibration value in case factory defaults must be restored.
- 13) Check **Force GATE1 off**, and FET M1 stops drawing current.
- 14) Connect the 10V DC power supply to DRAIN2 (+) and SOURCE2 (-). FET M2 may begin drawing current. Adjust the channel 2 VGS OFFSET control until the drain current is 125mA. Keep a note of this board calibration value in case factory defaults must be restored.
- 15) Uncheck **Force GATE1 off**. Both M1 and M2 should draw 125mA each, compensating for temperature rise.

Detailed Description of Software

The MAX11008 EV kit software GUI is organized into several tabs.

Hardware Connection Tab (Figure 1)

Individual working registers may be read or written from this tab. When the software first starts, click the **Connect** button to establish communications with the 68HC16MODULE and HSI2CMOD boards. During connection, you will be asked to move the HSI2CMOD rev

A board's jumper JU5 shunt. After successful connection, you will be prompted to read the EEPROM and perform a full reset. Answering NO to this prompt allows complete control of all read and write operations. Answering YES to the prompt initializes the GUI by bringing up the **EEPROM** tab, clicking **Refresh**, then bringing up the **ADC / Control** tab and clicking **Full Reset**, and finally in **Working Registers** clicking **Refresh**.

Warning: Writing the UMSG or STRM registers while the ADC is continuously converting overwrites the contents of the EEPROM with ADC conversion data. The GUI hides these detailed operations. Refer to source code files drv11008.cpp and kit11008.asm for implementation details.

EEPROM Tab (Figure 2)

Clicking the **Refresh** button reads the entire MAX11008 nonvolatile memory into the GUI.

To write a new value to an EEPROM cell, edit its hexadecimal value in the grid, either by clicking with the mouse or by using the arrow keys and function key F2. A prompt dialog box confirms writing the value and the register.

The EV kit software uses BUSY hardware handshaking when performing UMSG (EEPROM block read). The EV kit does not perform any handshaking when performing STRM (EEPROM block write), since the communications data link to the PC is too slow to overflow the MAX11008's FIFO.

Restoring Factory Configuration

The MAX11008 EV kit can be restored to its factory-default EEPROM image by clicking **Load from File** and choosing file MAX11008EVKIT-EEPROM.txt.

Working Registers Tab (Figure 3)

The GUI remembers the working register values read from or written to the hardware. Some of the working registers are write-only, so the GUI cannot always determine the value.

Clicking the **Refresh** button reads all readable MAX11008 working registers into the GUI.

To write a new value to a register, edit either its hexadecimal value or the individual bits, either by clicking with the mouse or by using the arrow keys and function key F2. A prompt dialog box confirms writing the value and the register.

Working register values are read from the EEPROM at device power-up, and after performing a full reset. The **Full Reset** button is located on the **ADC / Control** tab.

MAX11008 Evaluation Kit/ Evaluation System

Tables Tab (Figure 4)

There are four look-up tables (LUTs) that can be loaded: TLUT1 and TLUT2 for temperature compensation, and ALUT1 and ALUT2 for optional additional compensation. The EV kit software includes an MS-Excel spreadsheet file MAX11008_LUT_Example.xls, which models how physical temperature and voltage parameters can be mapped into the MAX11008's EEPROM memory. Refer to the *Temperature/APC Configuration Registers* section in the MAX11008 IC data sheet for detailed operation of the look-up tables.

A set of radio buttons selects one of the four LUT configuration registers. After clicking the appropriate radio button for TLUT1, ALUT1, TLUT2, or ALUT2, the software displays configuration values (pointer offset, linear interpolation, pointer size, table size, and start of table). After modifying any of these configuration values, click the **Apply Changes** button to write the new configuration value for the selected table.

To initialize a table, click the radio button selecting the desired table. Enter the value 0 into the edit field next to the **Fill with constant** button, then click to fill the table with zeros. Enter the known correction values into the table from the **EEPROM** tab, or click **Load from file** to load the table points from a text file. Finally, click **Interpolate entries that contain zero** to perform linear interpolation on all zero value table entries. (This operation is not the same as the MAX11008's linear interpolation *between* table entries. The GUI software interpolation fills in *missing* table entries.)

The memory map display shows which address range is assigned to each enabled look-up table. Two or more look-up tables may be assigned to the same address range; however, they will contain identical data. Overlapping table ranges are not recommended.

Alarms Tab (Figure 5)

The **Alarms** tab configures the ALARM output pin, temperature and current alarm limits, hysteresis, and alarm behavior.

ADC / Control Tab (Figure 6)

The **ADC / Control** tab configures the system parameters, reads ADC data, and controls the gate-driver outputs.

Keyboard Navigation

When you type on the keyboard, the system must know which control should receive the keys. Press the Tab key to move the keyboard's focus from one control to the next. The focused control is indicated by a dotted outline. Shift+Tab moves the focus to the previously focused control. Buttons respond to the keyboard's SPACE bar. Some controls respond to the keyboard's UP and DOWN arrow keys. Activate the program's menu bar by pressing the F10 key, then press the letter of the menu item you want. Most menu items have one letter underlined, indicating their shortcut key.

— Detailed Description of Hardware

For the purpose of "table-top" demonstration, two MOSFETS (M1 and M2) are provided on-board, taking the place of the LDMOS FETs that would be used in a real application. Diode-connected BJT transistors D1 and D2 sense the temperature of each FET while remaining electrically isolated by different PCB copper layers. Capacitors C20 and C21 filter the external temperature measurements. Gate drive is lowpass filtered by R14/C28 and R15/C29. Drain current is measured by Kelvin-connected precision resistors R7 and R8, filtered by R5/C22 and R6/C23. Drain voltage is sensed by 6:1 resistor-dividers R9/R1 and R3/R3.

Power is provided from the HSI2CMOD board connected to J1. The digital supply connects directly to 5V through jumper JU8. On-board MAX1615 regulator U3 provides the 5V analog supply through jumper JU12. On-board MAX6126 voltage reference U2 drives both REFADC and REFDAC through jumpers JU5 and JU6. The MAX11008 power is bypassed by C4, C5, and C24–C27.

The complete evaluation system is a three-board set, with the 68HC16 microcontroller driving the HSI2CMOD board's high-speed I²C interface core. Refer to the HSI2CMOD online documentation for details.

MAX11008 Evaluation Kit/ Evaluation System

Evaluate: MAX11008

Table 1. Jumper Settings

JUMPER	SHUNT POSITION	DESCRIPTION
JU8	Closed*	DVDD is powered from connector J1
	Open	DVDD must be provided by user
JU12	Closed*	AVDD is powered by on-board regulator U3
	Open	AVDD must be provided by user
JU5	Closed*	REFDAC = 2.500V from U2
	Open	REFDAC = internal 2.5V from U1
JU6	Closed*	REFADC = 2.500V from U2
	Open	REFADC = internal 2.5V from U1
JU7	Closed*	Demo circuit RCS1+ connection
	Open	Use external user-provided current-sense connection
JU9	Closed*	Demo circuit RCS1- connection
	Open	Use external user-provided current-sense connection
JU10	Closed*	Demo circuit ADCIN1 sense M1 $V_{DRAIN}/4$
	Open	Use external user-provided ADCIN1 connection
JU11	Closed*	Demo circuit M1 gate connection
	Open	Connect to external user-provided FET gate
JU13	Closed*	Demo circuit D1 temperature sensor connection
	Open	Connect external user current-sense diode
JU15	Closed*	Demo circuit RCS2+ connection
	Open	Use external user-provided current-sense connection
JU14	Closed*	Demo circuit RCS2- connection
	Open	Use external user-provided current-sense connection
JU16	Closed*	Demo circuit ADCIN2 sense M2 $V_{DRAIN}/4$
	Open	Use external user-provided ADCIN2 connection
JU17	Closed*	Demo circuit M2 gate connection
	Open	Connect to external user-provided FET gate
JU18	Closed*	Demo circuit D2 temperature sensor connection
	Open	Connect external user current-sense diode
JU19	Closed*	Force OPSAFE1 pin to DGND, normal operation
	Open	OPSAFE1 must be driven by a user-provided source
JU20	Closed*	Force OPSAFE2 pin to DGND, normal operation
	Open	OPSAFE2 must be driven by a user-provided source

*Default position.

MAX11008 Evaluation Kit/ Evaluation System

Table 1. Jumper Settings (continued)

JUMPER	SHUNT POSITION	DESCRIPTION
JU0	1-2*	A0 = DVDD (I ² C address selection)
	2-3	A0 = DGND (I ² C address selection)
	Open	A0 must be driven by user
JU1	1-2*	A1 = DVDD (I ² C address selection)
	2-3	A1 = DGND (I ² C address selection)
	Open	A1 must be driven by user
JU2	1-2*	A2 = DVDD (I ² C address selection)
	2-3	A2 = DGND (I ² C address selection)
	Open	A2 must be driven by user
JU3	1-2*	$\overline{\text{CNVST}}$ = DVDD (inactive)
	2-3	$\overline{\text{CNVST}}$ = DGND (active)
	Open	$\overline{\text{CNVST}}$ can be driven by user
JU4	1-2	DGND3 = DVDD (selecting SPI™ interface)
	2-3*	DGND3 = DGND (selecting I ² C interface)

*Default position.
SPI is a trademark of Motorola, Inc.

MAX11008 Evaluation Kit/ Evaluation System

Evaluate: MAX11008

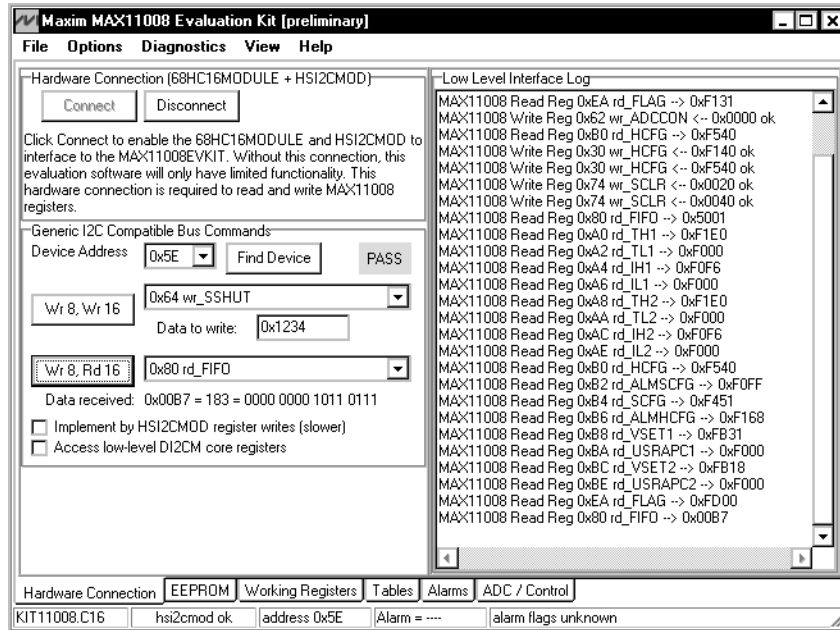


Figure 1. Hardware Connection Tab After Successful Connection

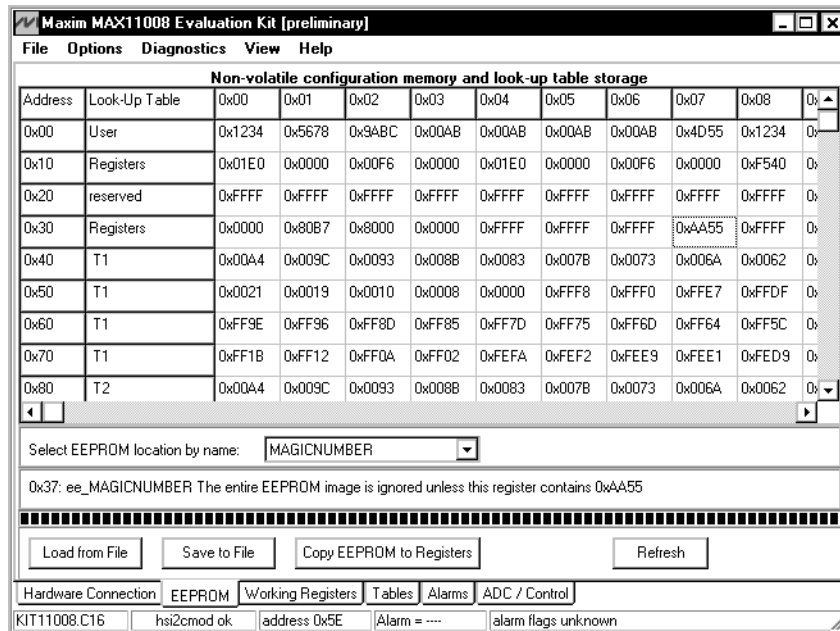


Figure 2. EEPROM Tab Showing a Typical Configuration

MAX11008 Evaluation Kit/ Evaluation System

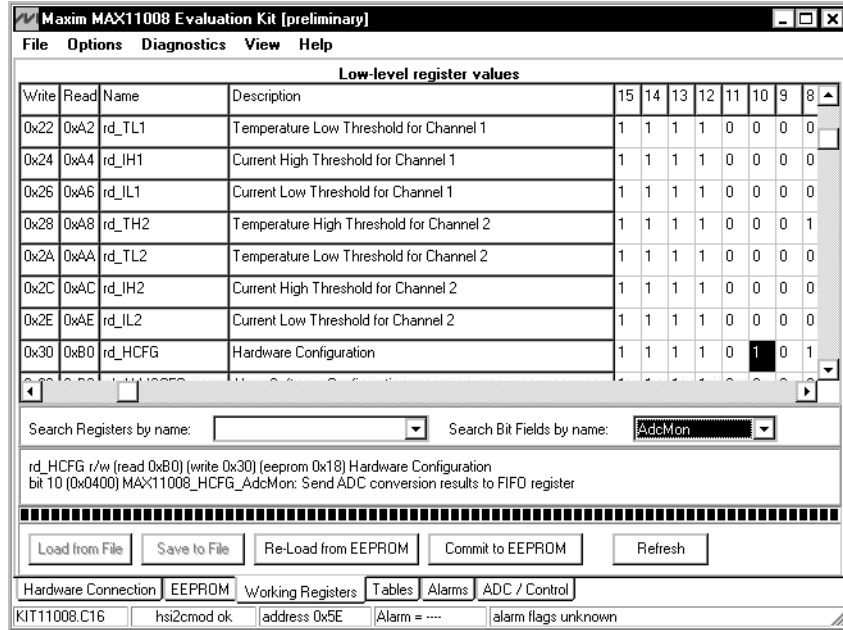


Figure 3. Working Registers Tab Showing a Bit Field Search

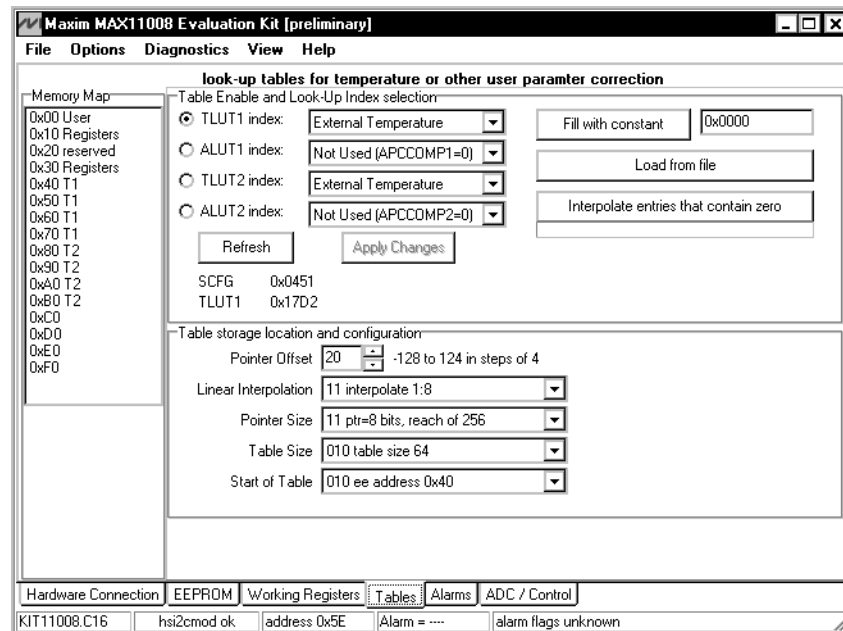


Figure 4. Tables Tab Showing a Typical Configuration

MAX11008 Evaluation Kit/ Evaluation System

Evaluate: MAX11008

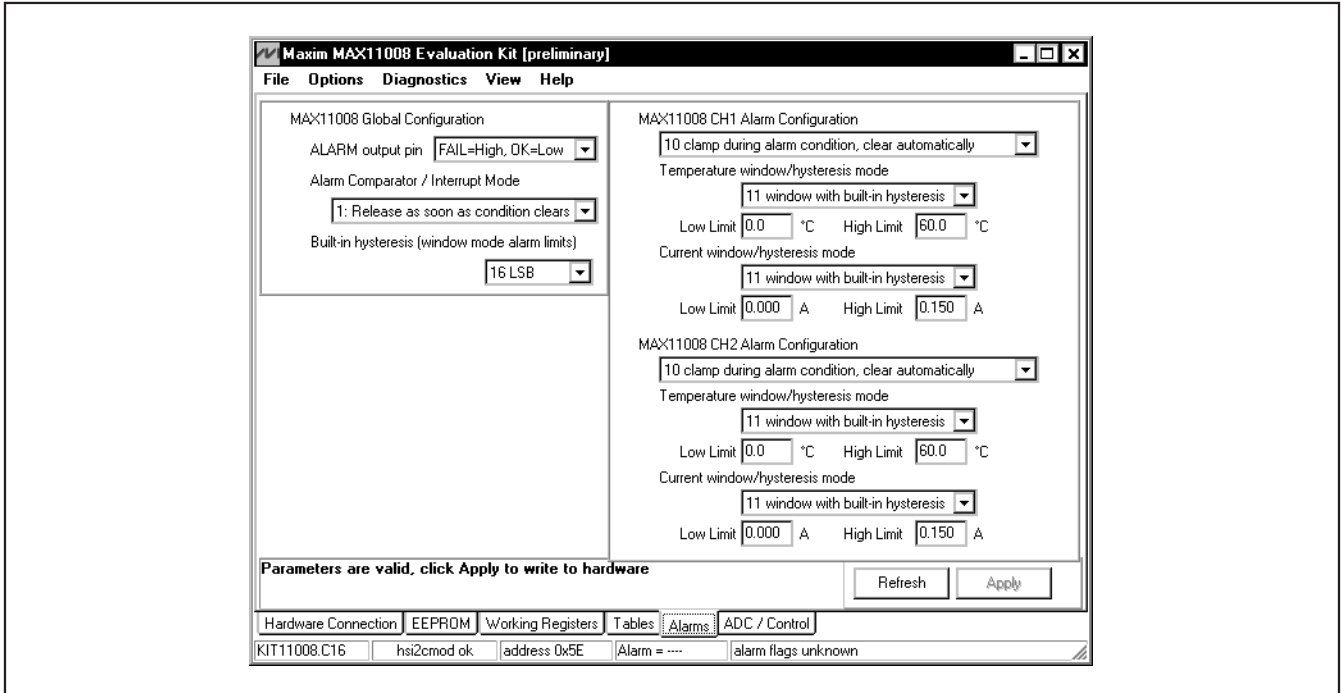


Figure 5. Alarms Tab Showing a Typical Configuration

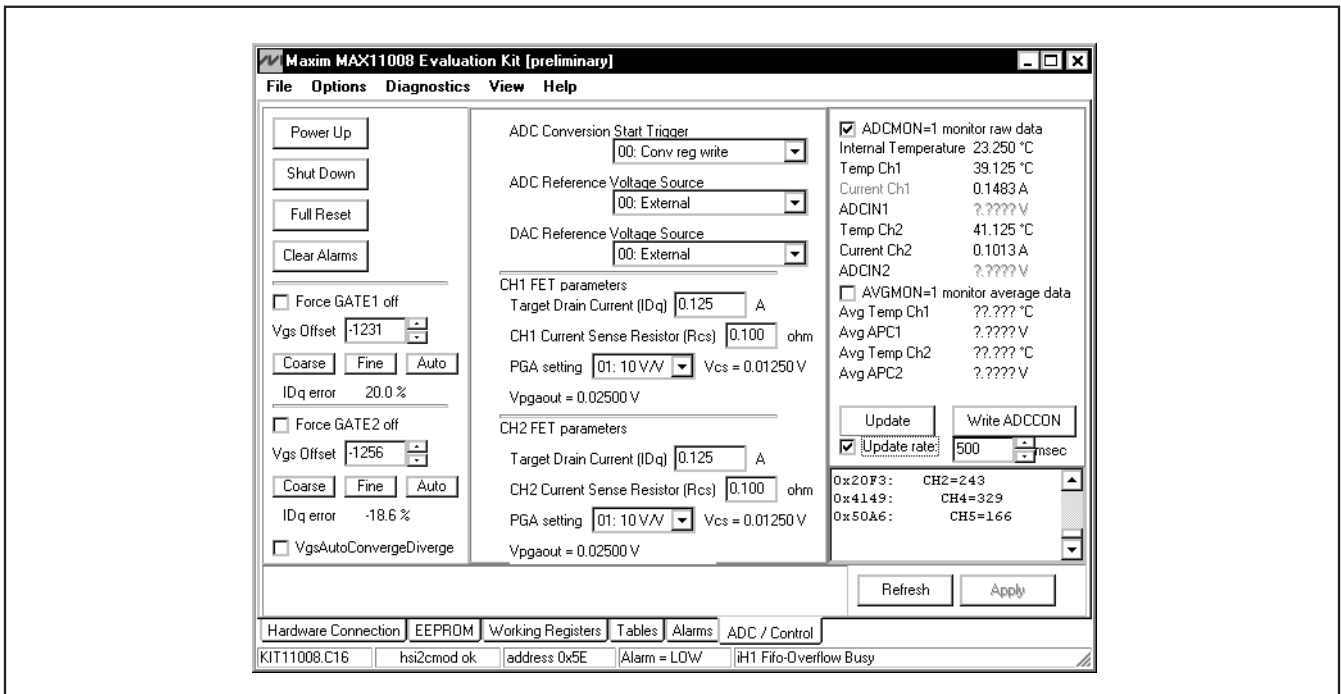


Figure 6. ADC / Control Tab Showing a Typical Configuration

MAX11008 Evaluation Kit/ Evaluation System

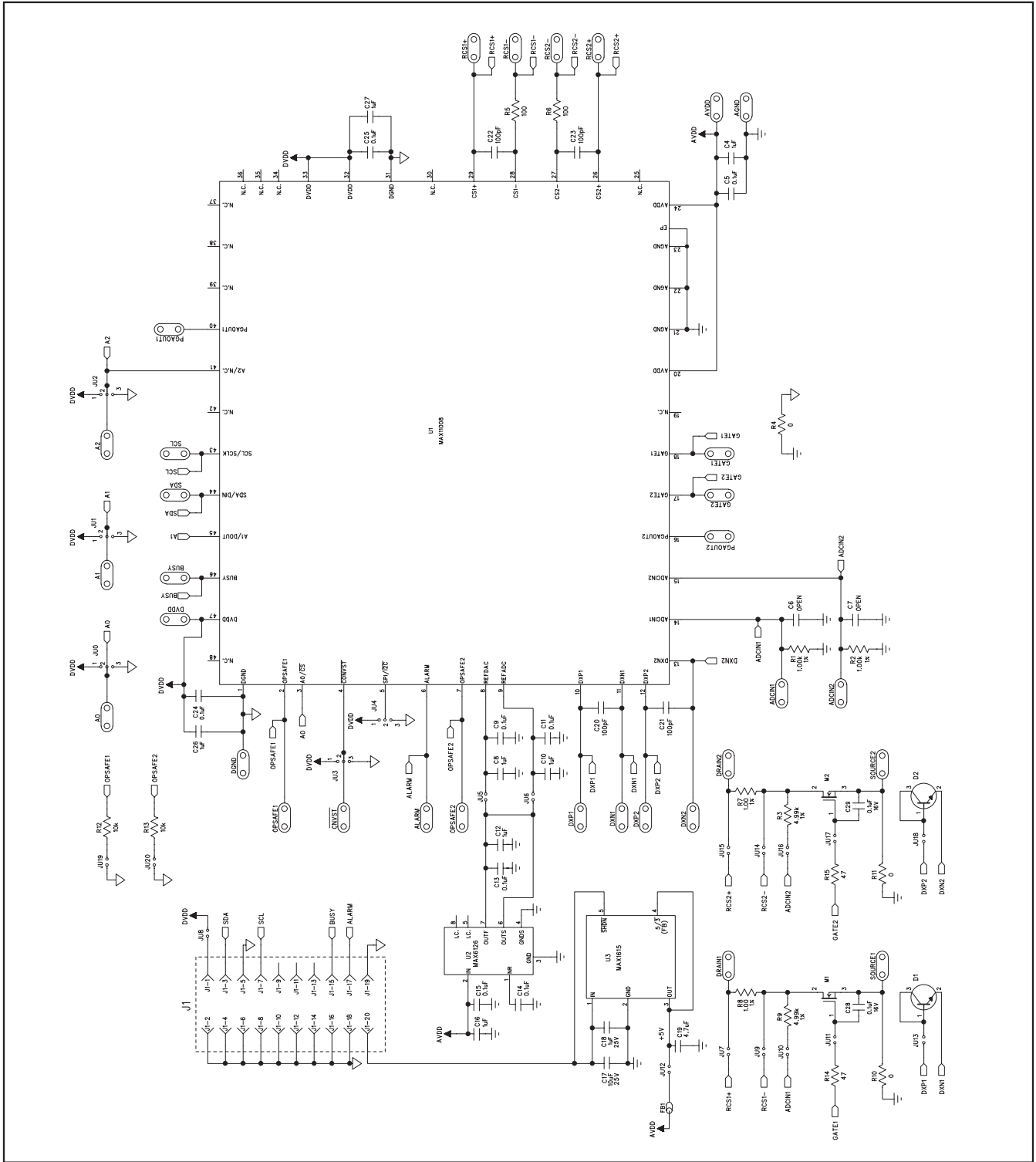


Figure 7. MAX11008 EV Kit Schematic

MAX11008 Evaluation Kit/ Evaluation System

Evaluate: MAX11008

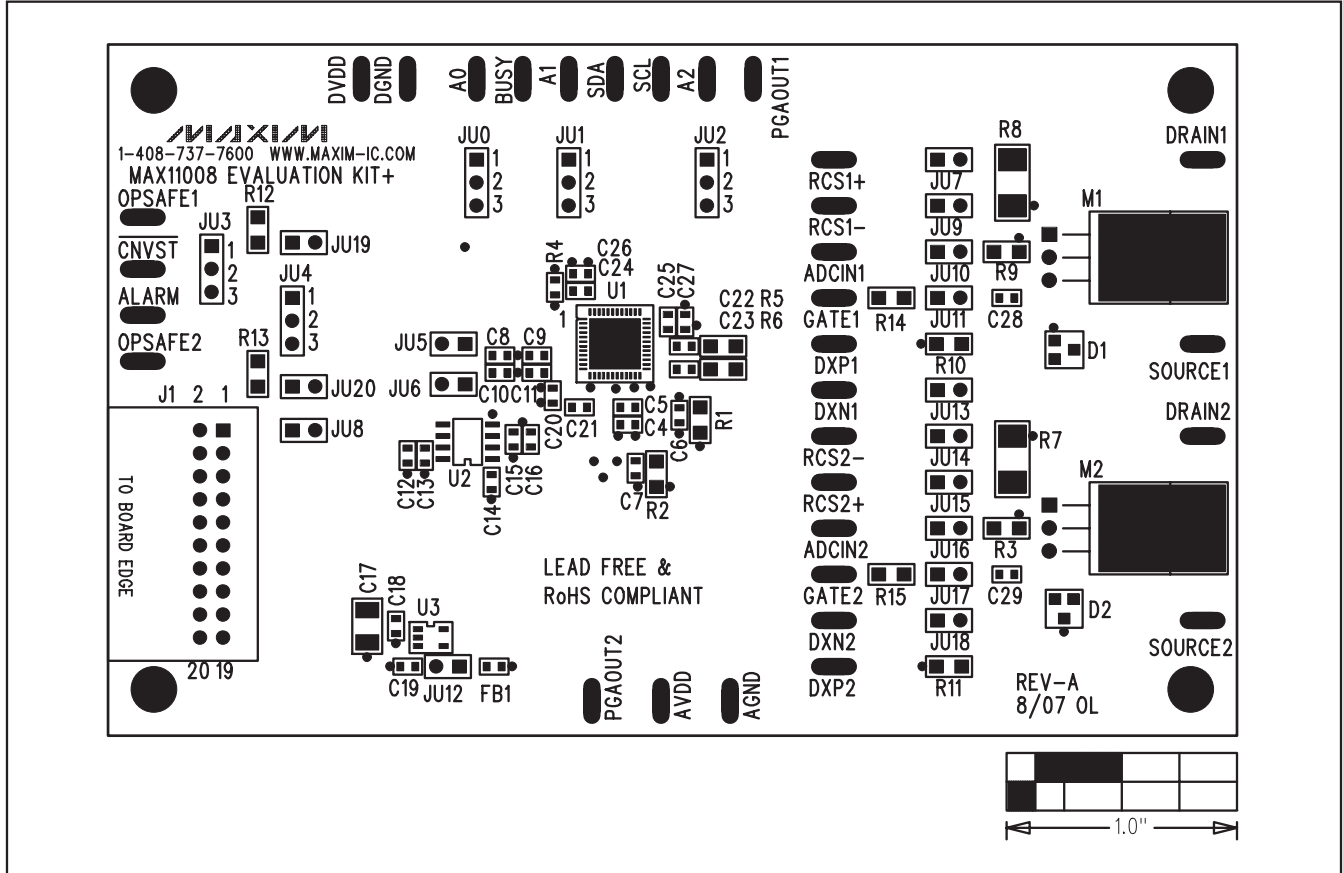


Figure 8. MAX11008 EV Kit Component Placement Guide—Component Side

MAX11008 Evaluation Kit/ Evaluation System

Evaluate: MAX11008

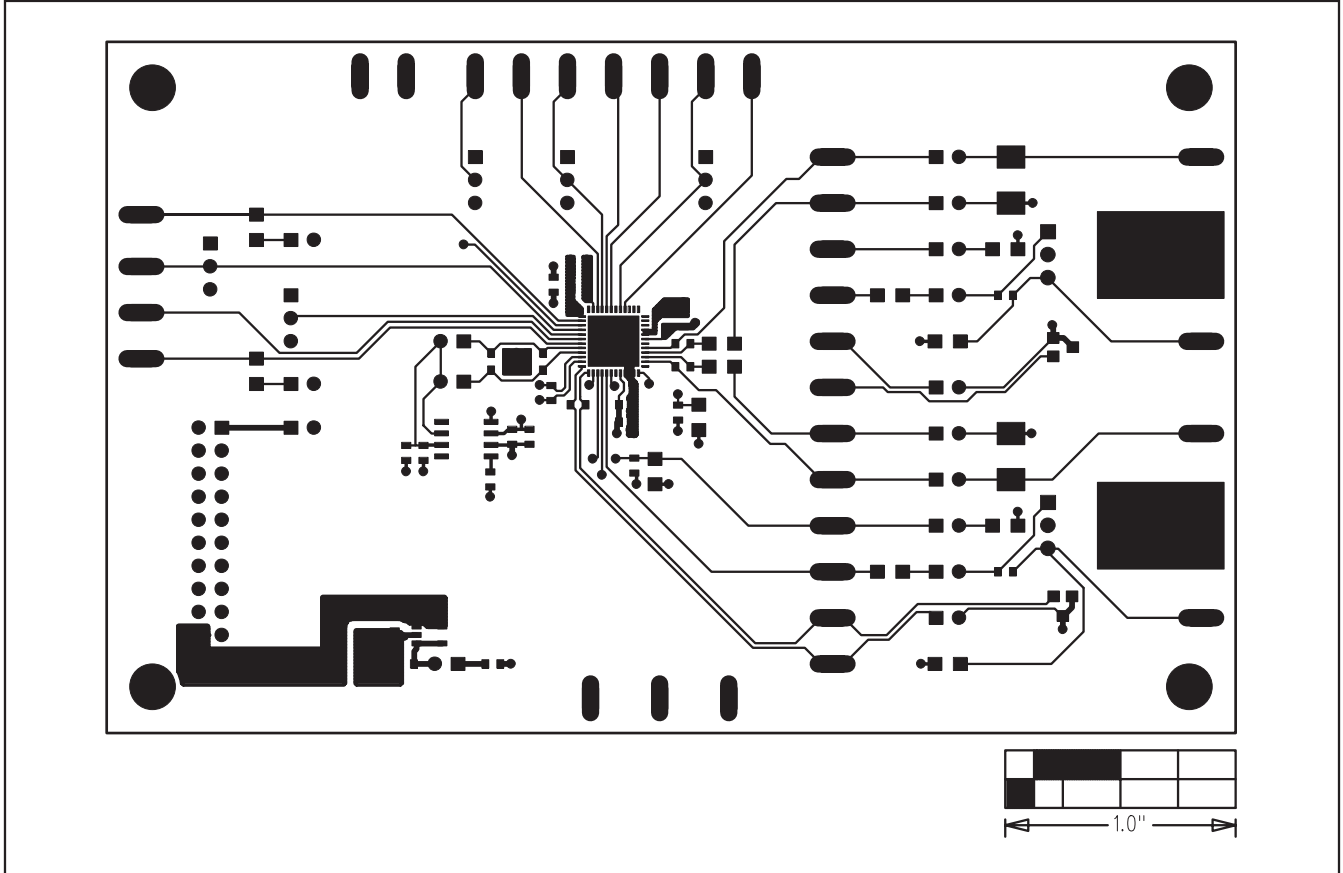


Figure 9. MAX11008 EV Kit PCB Layout—Component Side

MAX11008 Evaluation Kit/ Evaluation System

Evaluate: MAX11008

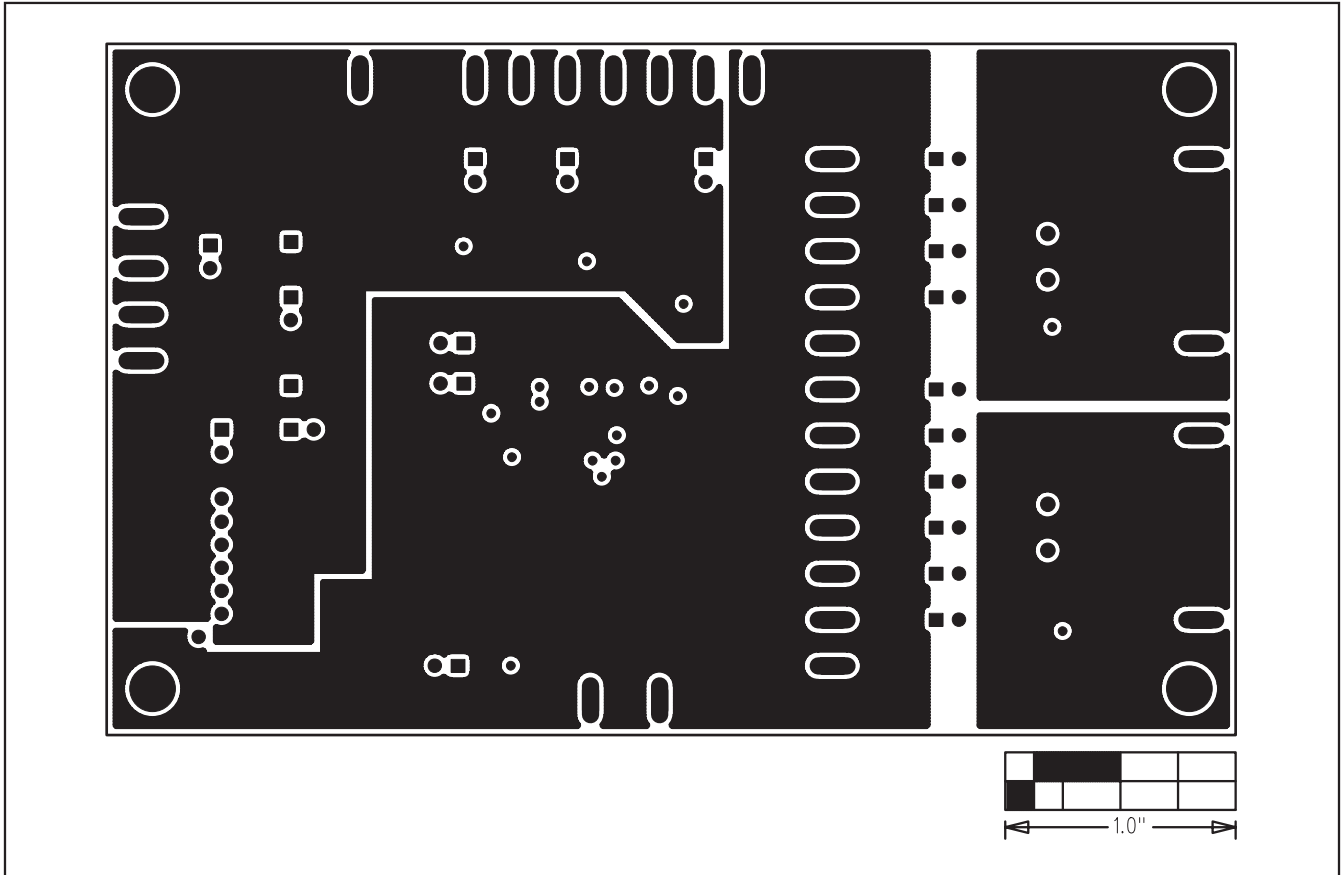


Figure 10. MAX11008 EV Kit PCB Layout—Ground Layer 2

MAX11008 Evaluation Kit/ Evaluation System

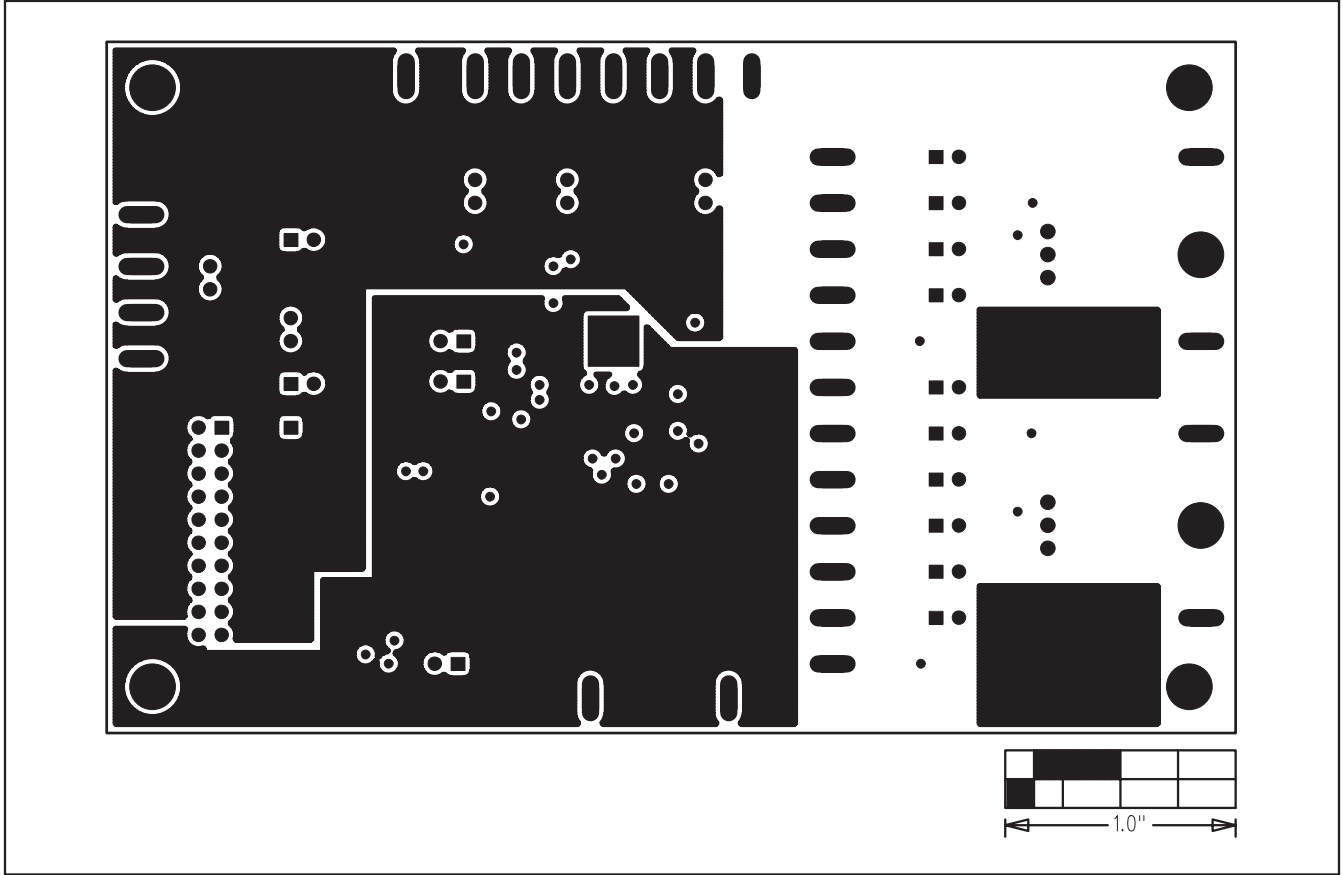


Figure 11. MAX11008 EV Kit PCB Layout—Power Layer 3

MAX11008 Evaluation Kit/ Evaluation System

Evaluate: MAX11008

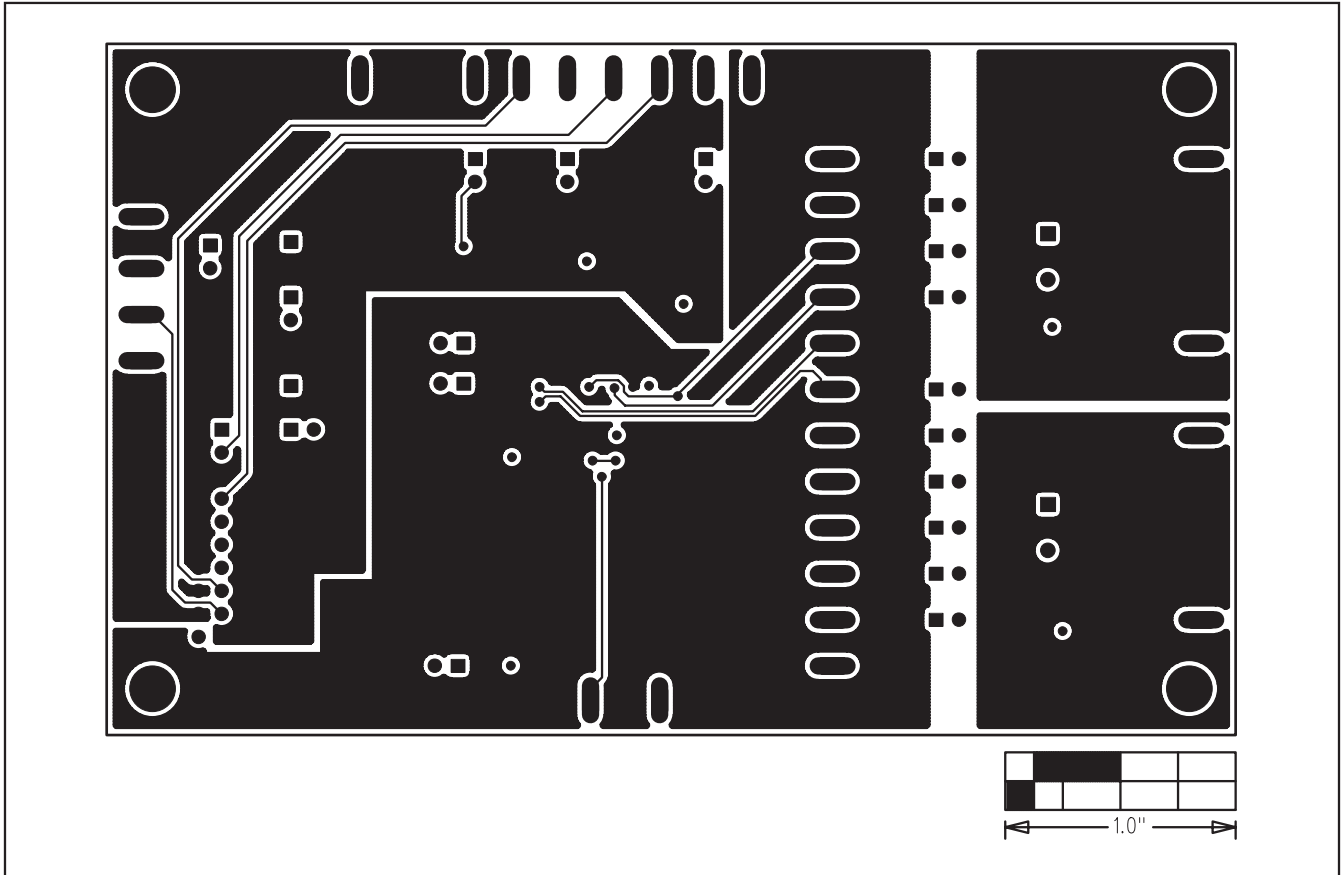


Figure 12. MAX11008 EV Kit PCB Layout—Solder Side

Maxim cannot assume responsibility for use of any circuitry other than circuitry entirely embodied in a Maxim product. No circuit patent licenses are implied. Maxim reserves the right to change the circuitry and specifications without notice at any time.

Maxim Integrated Products, 120 San Gabriel Drive, Sunnyvale, CA 94086 408-737-7600 _____ 15