



Chipsmall Limited consists of a professional team with an average of over 10 year of expertise in the distribution of electronic components. Based in Hongkong, we have already established firm and mutual-benefit business relationships with customers from,Europe,America and south Asia,supplying obsolete and hard-to-find components to meet their specific needs.

With the principle of "Quality Parts,Customers Priority,Honest Operation,and Considerate Service",our business mainly focus on the distribution of electronic components. Line cards we deal with include Microchip,ALPS,ROHM,Xilinx,Pulse,ON,Everlight and Freescale. Main products comprise IC,Modules,Potentiometer,IC Socket,Relay,Connector.Our parts cover such applications as commercial,industrial, and automotives areas.

We are looking forward to setting up business relationship with you and hope to provide you with the best service and solution. Let us make a better world for our industry!



Contact us

Tel: +86-755-8981 8866 Fax: +86-755-8427 6832

Email & Skype: info@chipsmall.com Web: www.chipsmall.com

Address: A1208, Overseas Decoration Building, #122 Zhenhua RD., Futian, Shenzhen, China



MAX13054A Shield EV Kit

Evaluates: MAX13054A

General Description

The MAX13054A Shield is a fully assembled and tested PCB that demonstrates the functionality of the MAX13054A fault-protected with extended common mode input range and 25kV ESD Human Body Model (HBM) controller area network (CAN) transceiver. The shield features a digital isolator, used as a level translator between the CAN bus and the controller interface and operates from a range of 1.71V to 5.5V supply.

Features

- Integrated Protection Increases Robustness
 - $\pm 65\text{V}$ Fault Tolerant CANH and CANL
 - $\pm 25\text{kV}$ ESD HBM (Human Body Model)
 - $\pm 25\text{V}$ Extended Common Mode Input Range (CMR)
 - Transmitter Dominant Timeout Prevents Lockup
 - Short-Circuit Protection
 - Thermal Shutdown
- Family Provides Flexible Design Options
 - STBY Input for Low-Current Mode, Slow Slew Rate, Normal Operating Mode
 - 1.62V to 5.5V Logic-Supply (V_L) Range
- High-Speed Operation of Up to 2Mbps
- Operating Temperature Range of -40°C to $+125^\circ\text{C}$ in 8-pin SOIC Package

Ordering Information appears at end of data sheet.

Quick Start

Required Equipment

- MAX13054A Shield
- 5V, 500mA DC power supply
- Signal/function generator
- Oscilloscope

Procedure

- 1) Place the MAX13054A Shield on a nonconductive surface to ensure that nothing on the PCB gets shorted to the workspace.
- 2) Set the jumpers of **JU1**, **JU2**, **JU_CANH**, and **JU_CANL** to 2-3 position.
- 3) Place two shunts on **JU8**.
 - a. Shunt pins 4-5 to connect TXD signal to D0 of **JU6**.
 - b. Shunt pins 2-3 to connect RXD signal to D1 of **JU6**.
- 4) Shunt STBY_U1 and GND on **JU12**, 1-2 position.
- 5) Place shunts on **JU3**, **JU10**, **JU15**, and **JU20**, 1-2 position.
- 6) Verify that all jumpers are in their default position as shown in [Table 1](#).
- 7) With +5V power supply disabled, connect the positive terminal to VCC_EXT, VL_EXT, and IOREF test points. Connect the negative terminal to the GND test point.
- 8) Connect the positive terminal of the function generator to D1 of **JU6** and negative terminal to any GND test points on the shield.
- 9) Turn on the +5V DC power supply.
- 10) Set Function generator to output a 250KHz square wave between 0V and 5V, and then enable function generator output.
- 11) Connect oscilloscope probes on CANH and CANL to GND test points of the Shield. Verify the difference voltage between CANH and CANL matches TXD input signal. The difference voltage should be between +1.5V and +3V in dominant mode and -120mV to +12mV in recessive mode.
- 12) Connect an oscilloscope probe on D0 of **JU6** and verify the RXD output signal matches the TXD input signal.

Detailed Description of Hardware

The MAX13054A Shield is a fully assembled and tested circuit board for evaluating the MAX13054A fault-protected high speed CAN transceiver (U1) with $\pm 65V$ of fault protection. The Shield is designed to evaluate MAX13054A alone or in a CAN system. The MAX13054A Shield enables mbed or Arduino platform to communicate on a CAN bus. The MAX14932 digital isolator is used as a level translator with a 1.71V to 5.5V supply range.

Powering the Board

The MAX13054A Shield requires one power supply for 5V operation. The power supply can come from an external supply or the Arduino/Mbed microcontroller's 5V supply. To select the external supply, shunt the JU1 VDD pin to VDD_EXT pin option, 2-3 default position. To connect the Arduino/mbed 5V supply to VDD, shunt JU1 VDD pin to 5V, 1-2 position. Similarly, the V_L supply is selected using JU2. Shunt JU2 to 2-3 position to select the external supply from a range of 1.62V to 5.5V. Shunt JU2 to 1-2 position to select the Arduino/mbed 5V supply. Refer to [Table 1](#) for jumper settings.

On-Board Termination

A properly terminated CAN bus is terminated at each end with the characteristic impedance of the cable. For CAT5 or CAT6 cables, this is typically 120Ω on each end for a 60Ω load on the CAN driver. The MAX13054A Shield features a selectable 60Ω load and a 60Ω - 60Ω split termination circuit between the CANH and CANL driver

outputs. The 60Ω - 60Ω split termination has a footprint for a capacitor to reduce high frequency noise and common mode drift. If the board is evaluated in a system and is connected at the end of the cable, then select the 120Ω (60Ω - 60Ω) termination. The termination resistors on the MAX13054A Shield should be changed to a 60Ω with optional footprint for a 100pF load, to simulate a complete system load during evaluation. CANH and CANL can also be left unloaded.

TXD and RXD Configuration

Digital channel assignments for TXD and RXD are selected via JU8. It consists of three columns, and 14 rows. The columns labeled TXD and RXD are connected to INA1 and OUTA1 pins on of the MAX14932FASE+ (U2), respectively. The middle column is the digital I/O pins, D0 to D13. This provides flexibility for the user to select different resources on the microcontroller for transmitting and receiving signals to and from the CAN transceiver. [Table 2](#) shows the list of JU8 jumper options.

DB9 Connector

The MAX13054A Shield has a DB9 connector to CANH and CANL (pins 7 and 2, respectively).

SD Card

The MAX13054A Shield has a SD card socket. The micro-SD card is connected to D10-D13 to interface with Arduino/mbed board through SPI.

Table 1. Jumper Settings

JUMPER	SHUNT POSITION	DESCRIPTION
JU_CANH and JU_CANL	1-2	Connects 120.8Ω between CANH and CANL
	2-3*	Connects 60.4Ω between CANH and CANL
	Open	No load is connected between CANH and CANL
JU1	1-2	VDD is shorted to 5V supply
	2-3*	VDD is shorted to VDD_EXT supply
	Open	VDD is open
JU2	1-2	VL is shorted to 5V supply
	2-3*	VL is shorted to VDD_EXT supply
	Open	VL is open
JU3	1-2*	Connects VL to U1 Pin 5
JU8	–	Refer to TXD and RXD Configuration
JU9	1-2	Connects STBY to D7
	Open*	Disconnects STBY from D7
JU10	1-2*	Connects TVS diode to CANL
	Open	Disconnects TVS diode to CANL
JU12	1-2*	Connects STBY to ground
	1-3	Connects STBY to a 26.1KΩ resistor to ground.
	1-4	Connects STBY to the U2's OUTB2 pin used for Arduino/mbed interface.
	Open	Internal pull up for standby mode.
JU15	1-2*	Connects 15pF to receiver output to ground.
	Open	Disconnects 15pF on receiver output.
JU20	1-2*	Connects TVS diode to CANH
	Open	Disconnects TVS diode to CANH

Note: *‘*’ indicates default jumper state.*

Table 2. TXD and RXD Jumper Settings

JUMPER	SHUNT POSITION	DESCRIPTION
JU8	1-2	Connects TXD to D0
	4-5*	Connects TXD to D1
	7-8	Connects TXD to D2
	10-11	Connects TXD to D3
	13-14	Connects TXD to D4
	16-17	Connects TXD to D5
	19-20	Connects TXD to D6
	22-23	Connects TXD to D7
	25-26	Connects TXD to D8
	28-29	Connects TXD to D9
	31-32	Connects TXD to D10
	34-35	Connects TXD to D11
	37-38	Connects TXD to D12
	40-41	Connects TXD to D13
	43-44	Connects TXD to D14
46-47	Connects TXD to D15	

JUMPER	SHUNT POSITION	DESCRIPTION
JU8	2-3*	Connects RXD to D0
	5-6	Connects RXD to D1
	8-9	Connects RXD to D2
	11-12	Connects RXD to D3
	14-15	Connects RXD to D4
	17-18	Connects RXD to D5
	20-21	Connects RXD to D6
	23-24	Connects RXD to D7
	26-27	Connects RXD to D8
	29-30	Connects RXD to D9
	32-33	Connects RXD to D10
	35-36	Connects RXD to D11
	38-39	Connects RXD to D12
	41-42	Connects RXD to D13
	44-45	Connects RXD to D14
47-48	Connects RXD to D15	

Note: ** indicates default jumper state.

Ordering Information

PART	TYPE
MAX13054AESHLD#	8 SO

#Denotes RoHS-compliant.

MAX13054A Shield Bill of Materials

Item	REF DES	Quantity	Value	DNI/DNP	Description	MFG PART #	Manufacturer
1	C1, C2	2	10UF	-	CAPACITOR; SMT (0805); CERAMIC CHIP; 10UF; 10V; TOL=10%; MODEL=GRM SERIES; TG=-55 DEGC TO +125 DEGC; TC=X7R	GRM21BR71A106KE51	MURATA
2	C3-C6	4	0.1UF	-	CAPACITOR; SMT; 0402; CERAMIC; 0.1uF; 16V; 5%; X7R; -55degC to +125degC; 0 +/-15% degC MAX.	C0402C104J4RAC	KEMET
3	C7	1	0.047UF	-	CAPACITOR; SMT (0402); CERAMIC CHIP; 0.047UF; 25V; TOL=10%; TG=-55 DEGC TO +125 DEGC	C1005X7R1E473K; GRM155R71E473K	TDK; MURATA
4	C10	1	15PF	-	CAPACITOR; SMT (0402); CERAMIC CHIP; 15PF; 50V; TOL=5%; TG=-55 DEGC TO +125 DEGC; TC=COG	C0402COG500-150JNP; GRM1555C1H150JA01	VENKEL LTD.; MURATA
5	CANH, CANL, RXD_U1, TXD_U1	4	N/A	-	TEST POINT; PIN DIA=0.1IN; TOTAL LENGTH=0.3IN; BOARD HOLE=0.04IN; WHITE; PHOSPHOR BRONZE WIRE SILVER;	5002	KEystone
6	D1, D2	2	25.6V	-	DIODE; TVS; SMC (DO-214AB); VRM=25.6V; IPP=36A	SM15T30CA	ST MICROELECTRONICS
7	IOREF	1	N/A	-	TEST POINT; PIN DIA=0.1IN; TOTAL LENGTH=0.3IN; BOARD HOLE=0.04IN; RED; PHOSPHOR BRONZE WIRE SILVER PLATE FINISH;	5000	KEystone
8	J3, J6	2	SSQ-108-24-G-S	-	CONNECTOR; FEMALE; THROUGH HOLE; .025INCH SQ POST SOCKET; STRAIGHT; 8PINS ;	SSQ-108-24-G-S	SAMTEC
9	J4	1	SSQ-106-24-G-S	-	CONNECTOR; FEMALE; THROUGH HOLE; .025INCH SQ POST SOCKET; STRAIGHT; 6PINS ;	SSQ-106-24-G-S	SAMTEC
10	J5	1	SSQ-110-24-G-S	-	CONNECTOR; FEMALE; THROUGH HOLE; .025INCH SQ POST SOCKET; STRAIGHT; 10PINS ;	SSQ-110-24-G-S	SAMTEC
11	J7	1	182-009-113R531	-	CONNECTOR; MALE; THROUGH HOLE; D-SUBMINIATURE CONNECTOR; RIGHT ANGLE; 9PINS	182-009-113R531	NORCOMP
12	J14	1	502570-0893	-	CONNECTOR; FEMALE; SMT; MICROSD CARD CONNECTOR; RIGHT ANGLE; 10PINS	502570-0893	MOLEX
13	JU1, JU2	2	PCC03SAAN	-	CONNECTOR; MALE; THROUGH HOLE; BREAKAWAY; STRAIGHT THROUGH; 3PINS; -65 DEGC TO +125 DEGC	PCC03SAAN	SULLINS
14	JU3, JU9, JU10, JU15, JU20	5	PCC02SAAN	-	CONNECTOR; MALE; THROUGH HOLE; BREAKAWAY; STRAIGHT THROUGH; 2PINS; -65 DEGC TO +125 DEGC	PCC02SAAN	SULLINS
15	JU8	1	TSW-116-07-T-T	-	CONNECTOR; MALE; THROUGH HOLE; 0.025IN SQ POST HEADER; STRAIGHT; 48PINS	TSW-116-07-T-T	SAMTEC
16	JU12	1	TSW-104-07-L-S	-	EVKIT PART-CONNECTOR; MALE; THROUGH HOLE; TSW SERIES; SINGLE ROW; STRAIGHT; 4PINS	TSW-104-07-L-S	SAMTEC
17	JU13	1	OSTTA024163	-	CONNECTOR; FEMALE; THROUGH HOLE; 5.08MM TERM BLOCK CONNECTOR; STRAIGHT; 2PINS; -30 DEGC TO +105 DEGC	OSTTA024163	ON-SHORE TECHNOLOGY INC.
18	JU_CANH, JU_CANL	2	PBC03SAAN	-	CONNECTOR; MALE; THROUGH HOLE; BREAKAWAY; STRAIGHT; 3PINS; -65 DEGC TO +125 DEGC	PBC03SAAN	SULLINS
19	R1, R3	2	0	-	RESISTOR; 0402; 0 OHM; 0%; JUMPER; 0.10W; THICK FILM	ERJ-2GE0R00X	PANASONIC
20	R2, R8, R10, R12	4	1.8K	-	RESISTOR; 0402; 1.8K OHM; 1%, 100PPM, 0.0625W, THICK FILM	CRCW04021K80FK; RC0402FR-071K8L	VISHAY DALE; YAGEO PHICOMP

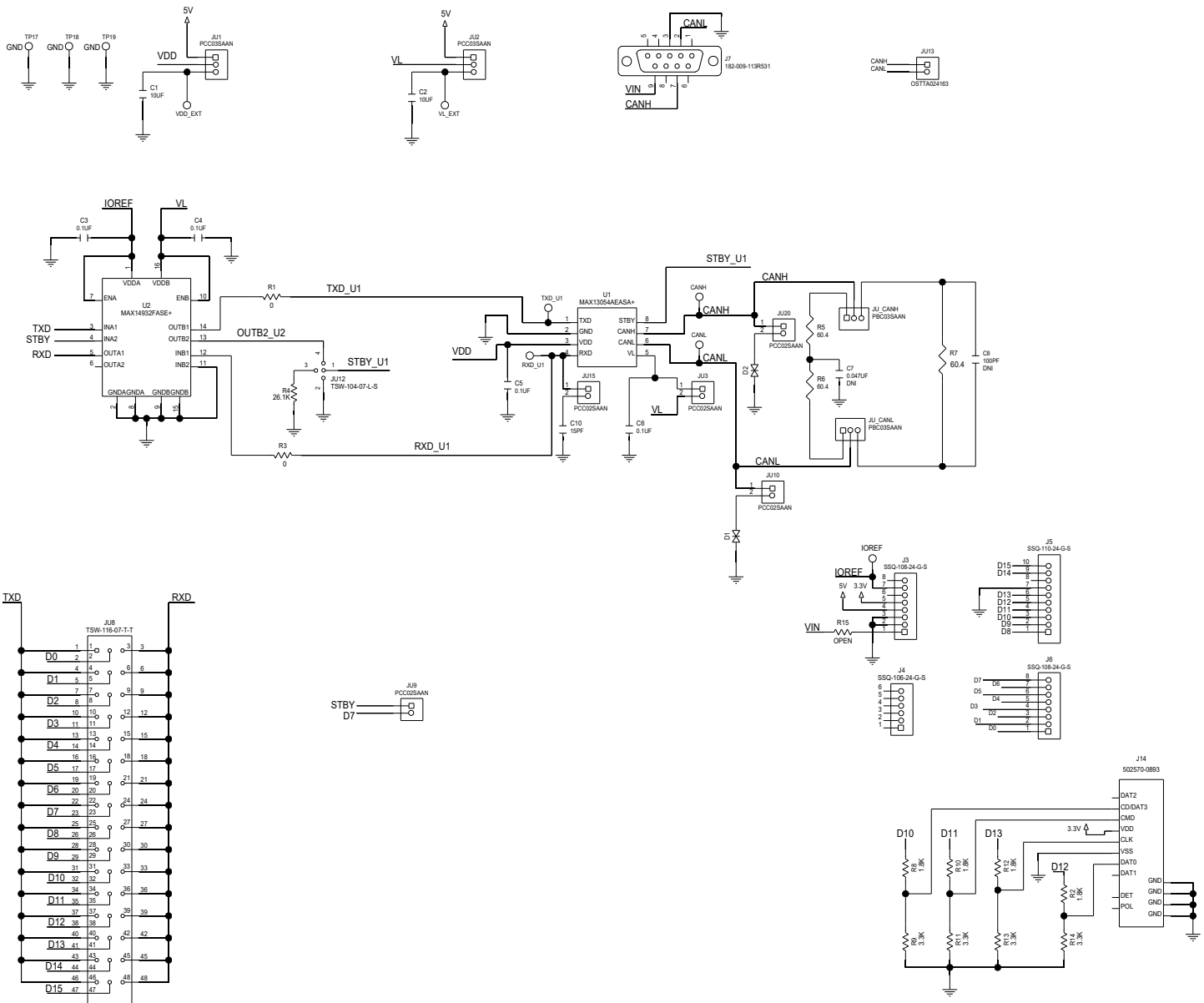
MAX13054A Shield Bill of Materials (continued)

Item	REF DES	Quantity	Value	DNI/DNP	Description	MFG PART #	Manufacturer
21	R4	1	26.1K	-	RESISTOR; 0402; 26.1K OHM; 1%; 100PPM; 0.063W; THICK FILM	CRCW040226K1FK	VISHAY DALE
22	R5, R6	2	60.4	-	RESISTOR; 0603; 60.4 OHM; 1%; 100PPM; 0.10W; THICK FILM	CRCW060360R4FK	VISHAY DALE
23	R7	1	60.4	-	RES; SMT (1210); 60.4R; 1%; +/- 100PPM/DEGK; 0.75W	CRCW121060R4FKEAHP	VISHAY DRALORIC
24	R9, R11, R13, R14	4	3.3K	-	RESISTOR, 0402, 3.3K OHM, 1%, 100PPM, 0.0625W, THICK FILM	CRCW04023K30FK	VISHAY DALE
25	TP17, TP19	2	N/A	-	TEST POINT; PIN DIA=0.125IN; TOTAL LENGTH=0.445IN; BOARD HOLE=0.063IN; BLACK; PHOSPHOR BRONZE WIRE SILVER PLATE FINISH;	5011	KEYSTONE
26	TP18	1	N/A	-	TEST POINT; PIN DIA=0.1IN; TOTAL LENGTH=0.3IN; BOARD HOLE=0.04IN; BLACK; PHOSPHOR BRONZE WIRE SILVER PLATE FINISH;	5001	KEYSTONE
27	U1	1	MAX13054AEASA+	-	EVKIT PART - IC; TXRX; +5V; 2MBPS CAN TRANSCEIVER WITH +/-60V FAULT PROTECTION; +/-25V CMR AND +/-25KV ESD; PACKAGE OUTLINE DRAWING: 21-0041; LAND PATTERN NUMBER: 90-0096; PACKAGE CODE: S8+4; NSOIC8	MAX13054AEASA+	MAXIM
28	U2	1	MAX14932FASE+	-	IC; DISO; 2/2 CHANNEL; 150MBPS; DEFAULT LOW; 2.75KVRMS DIGITAL ISOLATOR; NSOIC16 150MIL	MAX14932FASE+	MAXIM
29	VDD_EXT, VL_EXT	2	N/A	-	TESTPOINT WITH 1.80MM HOLE DIA, RED, MULTIPURPOSE;	5010	KEYSTONE
30	PCB	1	PCB	-	PCB:MAX13054AESHLD	MAX13054AESHLD	MAXIM
31	C8	0	100PF	DNP	CAPACITOR; SMT (0402); CERAMIC CHIP; 100PF; 50V; TOL=5%; TG=-55 DEGC TO +125 DEGC; TC=COG	C0402C101J5GAC; NMC0402NPO101J; CC0402JRNPO9BN101; GRM1555C1H101JA01; C1005COG1H101J050	KEMET; NIC COMPONENTS CORP.; YAGEO PHICOMP; MURATA; TDK
32	R15	0	OPEN	DNP	RESISTOR; 0402; OPEN; FORMFACTOR	N/A	N/A
TOTAL		55					

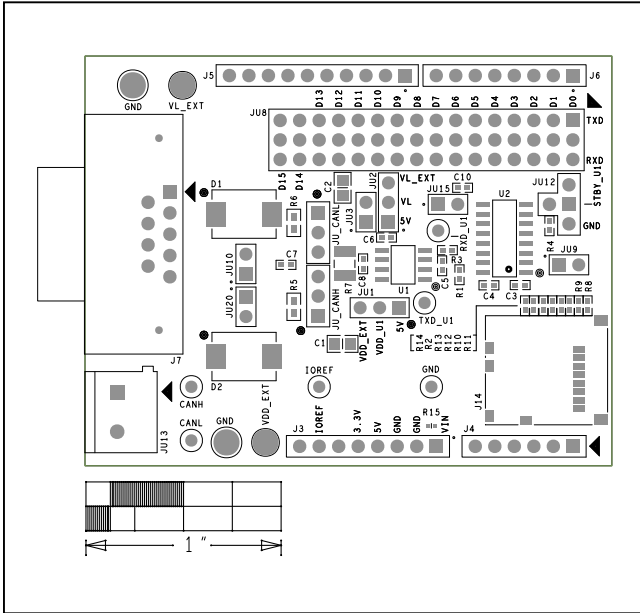
MAX13054A Shield EV Kit

Evaluates: MAX13054A

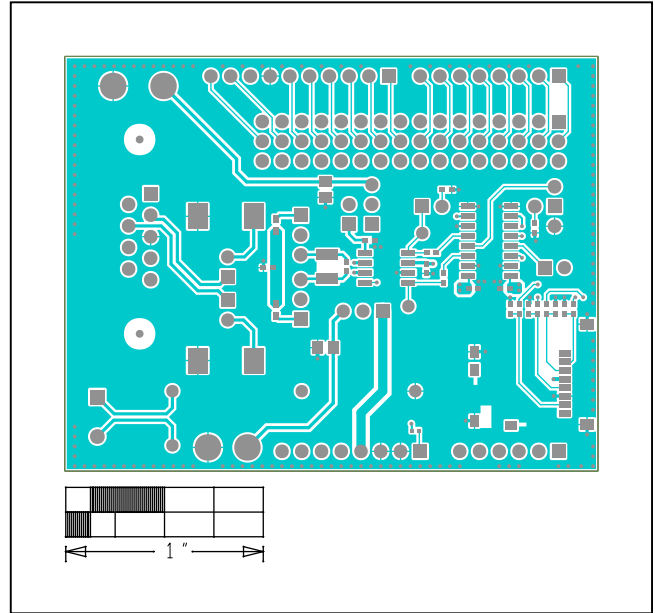
MAX13054A Shield Schematic



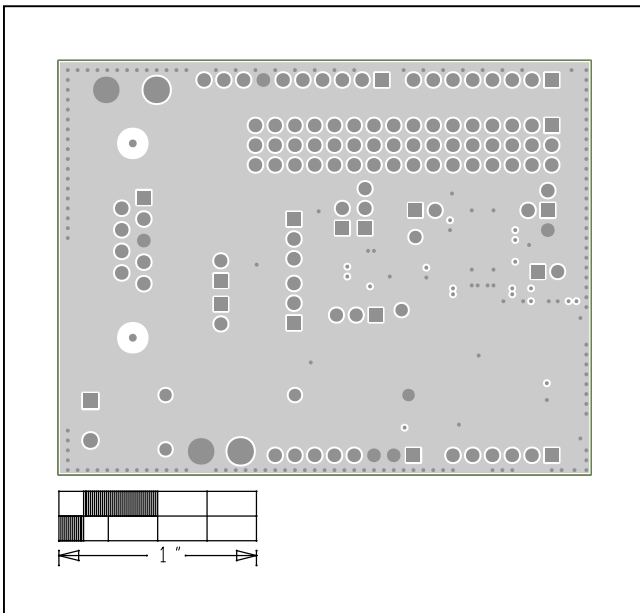
MAX13054A Shield PCB Layout Diagrams



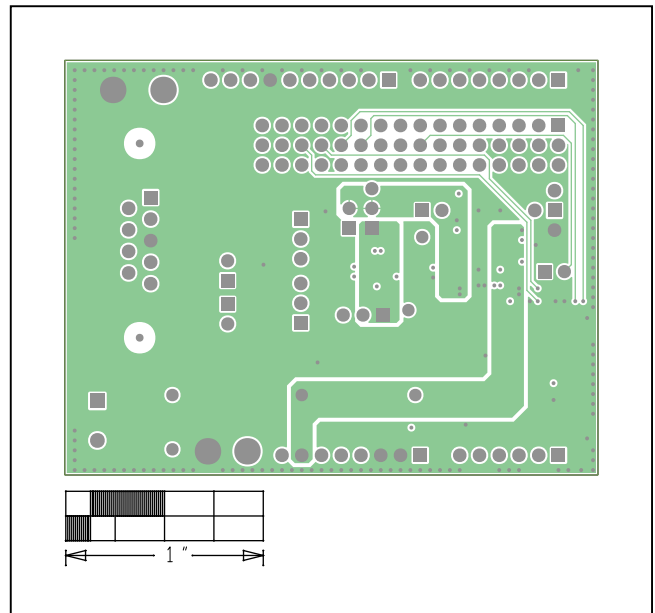
MAX13054A Shield—Top Silkscreen



MAX13054A Shield—Top

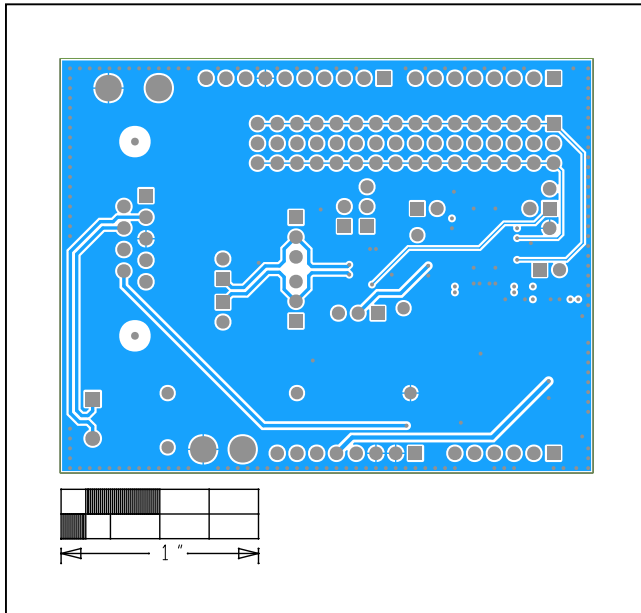


MAX13054A Shield—Internal 2

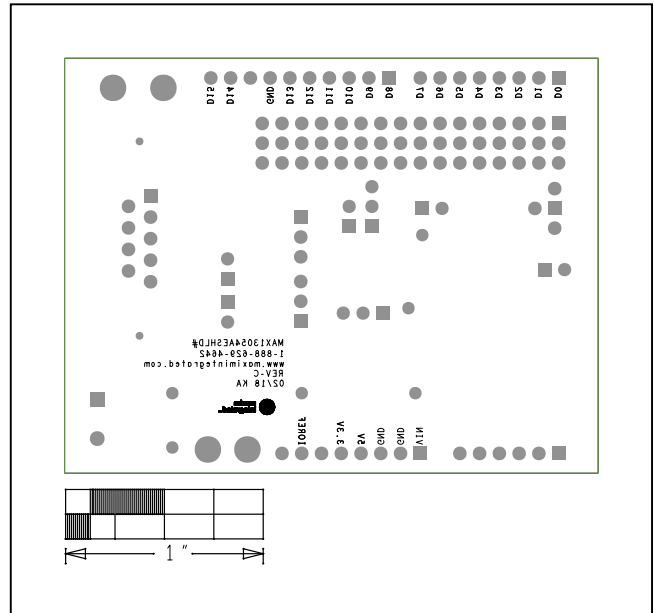


MAX13054A Shield—Internal 3

MAX13054A Shield PCB Layout Diagrams (continued)



MAX13054A Shield—Bottom



MAX13054A Shield—Bottom Silkscreen

Revision History

REVISION NUMBER	REVISION DATE	DESCRIPTION	PAGES CHANGED
0	2/18	Initial release	—
1	4/18	Updated <i>General Description</i> , <i>Detailed Description</i> , Table 2, schematic, bill of materials and PCB layout diagrams	1,2, 4–11

For pricing, delivery, and ordering information, please contact Maxim Direct at 1-888-629-4642, or visit Maxim Integrated's website at www.maximintegrated.com.

Maxim Integrated cannot assume responsibility for use of any circuitry other than circuitry entirely embodied in a Maxim Integrated product. No circuit patent licenses are implied. Maxim Integrated reserves the right to change the circuitry and specifications without notice at any time.