



Chipsmall Limited consists of a professional team with an average of over 10 year of expertise in the distribution of electronic components. Based in Hongkong, we have already established firm and mutual-benefit business relationships with customers from,Europe,America and south Asia,supplying obsolete and hard-to-find components to meet their specific needs.

With the principle of "Quality Parts,Customers Priority,Honest Operation,and Considerate Service",our business mainly focus on the distribution of electronic components. Line cards we deal with include Microchip,ALPS,ROHM,Xilinx,Pulse,ON,Everlight and Freescale. Main products comprise IC,Modules,Potentiometer,IC Socket,Relay,Connector.Our parts cover such applications as commercial,industrial, and automotives areas.

We are looking forward to setting up business relationship with you and hope to provide you with the best service and solution. Let us make a better world for our industry!



## Contact us

Tel: +86-755-8981 8866 Fax: +86-755-8427 6832

Email & Skype: info@chipsmall.com Web: www.chipsmall.com

Address: A1208, Overseas Decoration Building, #122 Zhenhua RD., Futian, Shenzhen, China



## General Description

The MAX20735 Evaluation Kit (EV kit) serves as a reference platform for evaluating the MAX20735 voltage regulator IC. This single-chip, integrated switching regulator provides an extremely compact, low-cost, highly efficient, fast, accurate and reliable power delivery solution for emerging low-output voltage applications up to 40A. Refer to the MAX20735 IC data sheet for more information.

The EV kit consists of a fully assembled and tested PCB implementation of the MAX20735. Jumper pins, test points, and input/output connectors are included for flexibility and ease-of-use in a wide range of applications.

The evaluation board is configured with an “edge strip” to allow high di/dt loading when evaluating the system. The +V<sub>OUT</sub> connection is on the top side, while the return (or -V<sub>OUT</sub>) is on the bottom side, directly mirroring the top-side strip.

Either solder directly to the output “strip” or use the J8 terminal block to interface to a load.

## Features

- High Efficiency and Power Density
- Low Component Count
- Small Solution Size
  - 509mm<sup>2</sup> Including Inductor and Output Capacitors
- Optimized Performance
- Reduced Design-In Time
- Proven PCB Layout
- Fully Assembled and Tested

## Getting Started

### Required Equipment

- MAX20735 EV kit
- 4.5V to 16V power supply
- 0A to 40A Load
- Oscilloscope, probes, voltmeter

### Procedure

The EV kit is fully assembled and tested. Follow the steps below to verify board operation:

- 1) Connect a powered-off 4.5V to 16V input supply to J1.
  - Optionally, connect supply sense leads to V<sub>DD1</sub> and GND1 for best accuracy.
- 2) Connect the load to J3 or J8.
- 3) Connect the V<sub>OUT</sub> scope probe/voltmeter to J4 or J11, as desired.
  - J4 and J11 are connected to the sense point for best accuracy.
- 4) Position the SW1 toggle switch, pointing away from J1 to enable the IC (if desired).
- 5) Turn on the power supply and observe that V<sub>OUT</sub> = 1V.
- 6) For efficiency measurements, J6 has appropriate Kelvin sense points.

[Ordering Information](#) appears at end of data sheet.

**Operation**

The MAX20735 IC is a monolithic, high-frequency step-down switching regulator optimized for applications requiring small-size, high-efficiency, and low-output voltages. Detailed product and application information is provided in the MAX20735 IC data sheet.

**Output Enable (OE)**

OE is used to enable/disable the output voltage. The output voltage is enabled/disabled by SW1. Pointing SW1 in the direction of the silkscreened arrow enables the regulator.

**Output-Voltage Selection**

The EV kit is setup to initially boot up to an output voltage of 1V. This has been accomplished by setting the reference to come up to a  $V_{BOOT}$  of 0.6484V and placing a voltage-divider in the feedback path with a divide ratio of 0.6484. For different  $V_{OUT}$  values, the  $V_{BOOT}$  and feedback-divider ratio can be changed, as described in the MAX20735 IC data sheet.

$R_{GAIN}$  and  $C_{OUT}$  can also be changed to affect performance. Refer to the MAX20735 IC data sheet for more details.

**Soft-Start and Switching Frequency**

These are programmable parameters. For the EV kit, soft-start is set to 3ms, and switching frequency to 400kHz.

**Status Monitoring**

Whenever the part is actively regulating, and the output voltage is within the power-good window, the STAT pin is high. In all other conditions, including enabled but in a fault state, the STAT pin is pulled low. Refer to the MAX20735 IC data sheet for more details.

**Input-Voltage Monitoring**

The  $V_{DD1}$  and GND1 sense points monitor the input supply.

**Switching-Voltage Monitoring**

The switching waveform can be monitored on VX1.

**Output-Voltage Monitoring**

J4-1 and J4-2 monitor the output voltage of  $V_{OUT}$  and GND, respectively. These test points should not be used for loading. Alternatively, scopejack J11 can be used to monitor the output voltage.

**Efficiency Testing**

- J6 provides convenient access to the appropriate  $V_{IN}$  and  $V_{OUT}$  sense points.
- $V_{IN\_EFF\pm}$  are on J6 pins 1 and 2.
- $V_{OUT\_EFF\pm}$  are on J6 pins 3 and 4.
- Input and output currents should be measured with 0.1% lab shunts.
- For increased accuracy, shunt mismatch can be measured and calibrated out by doing a test running the same current through both shunts.
- For increased accuracy, shunt mismatch can be measured and calibrated out by doing a test running the same current through both shunts.

**Ordering Information**

DEVICE TYPE	TYPE
MAX20735EVKIT#	EV Kit

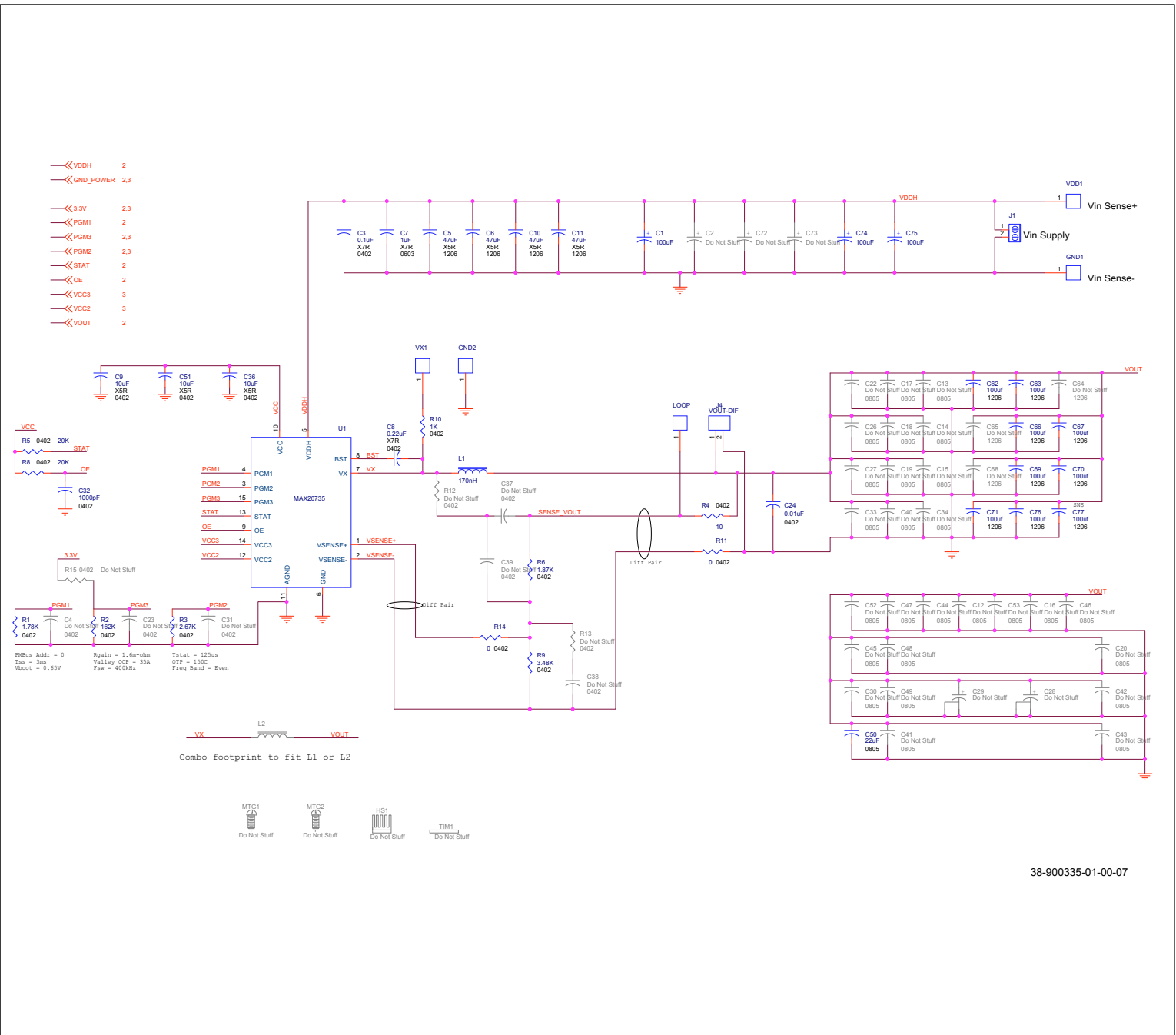
#Denotes RoHS compliant.



## MAX20735 Bill of Materials

Part Reference	Quantity	Description
C1, C74, C75	3	100uF, 25V, 20%, TANTALUM
C24	1	0.01uF, 25V, 10%, X7R
C3	1	0.1uF, 25V, 10%, X7R
C32	1	1000pF, 50V, 10%, X7R
C5, C6, C10, C11	4	47uF, 25V, 20%, X5R
C50	1	22uF, 6.3V, 20%, X6S
C60, C61	2	1.0uF, 25V, 20%, X5R
C62, C63, C66, C67, C69, C70, C71, C76, C77	9	100uf, 6.3V, 20%, X5R
C7	1	1uF, 25V, 10%, X7R
C8	1	0.22uF, 16V, 10%, X7R
C9, C36, C51	3	10uF, 6.3V, 20%, X5R
GND1, GND2, GND3, LOOP, VDD1, VX1	6	1_PIN-1X1 Straight
J1, J8	2	2_PIN-2 Pin, Terminal Block w/Screws, Blue
J11	1	Shielded Scope Probe Jack, Vertical
J3	1	2_Pin-Edge Fingers
J4	1	VOUT-DIF-1X2 Straight
J6	1	8_PIN-2X4 Straight
J7	1	6_PIN-2X3 Straight
L1	1	170nH, 10%, Isat= 66A
R1	1	1.78KΩ, 1%, 1/16W
R10, R20, R21, R22, R23	5	1KΩ, 5%, 1/16W
R11, R14	2	0Ω, 5%, 1/16W
R2	1	162KΩ, 1%, 1/16W
R3	1	2.67KΩ, 1%, 1/16W
R4	1	10Ω, 1%, 1/16W
R5, R8	2	20KΩ, 5%, 1/16W
R6	1	1.87KΩ, 1%, 1/16W
R9	1	3.48KΩ, 1%, 1/16W
SW1	1	DPDT-DPDT, 6pins, 1switch
U1	1	MAX20735
	1	PCB# 35-900335-01-00

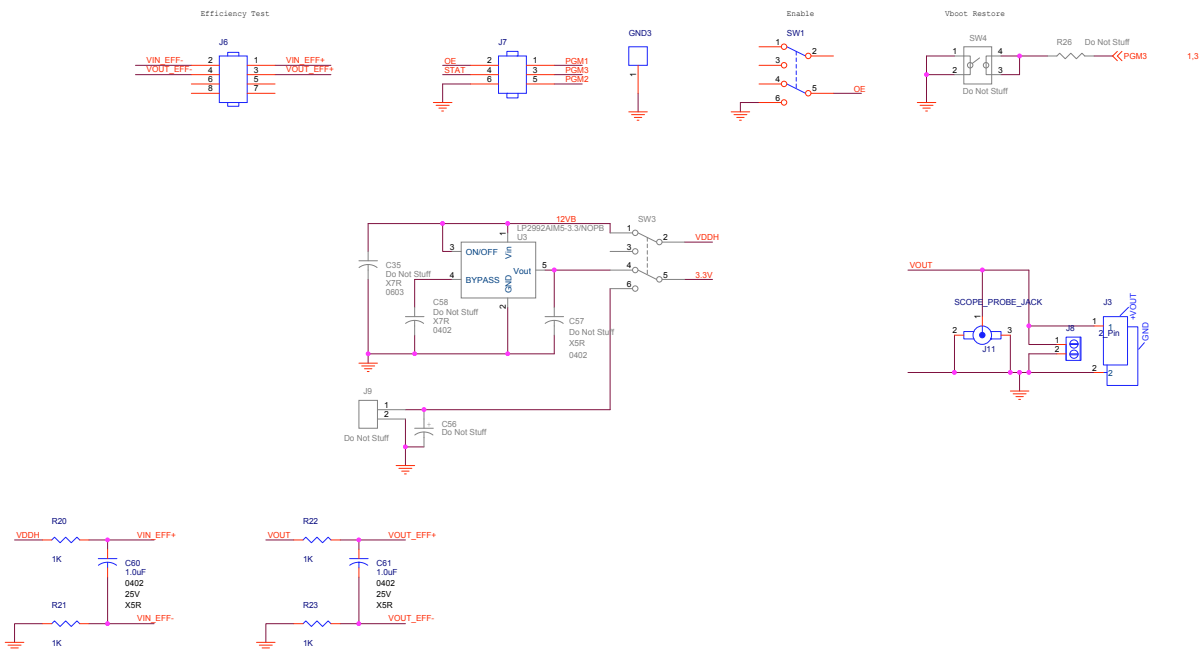
MAX20735 Schematics



38-900335-01-00-07

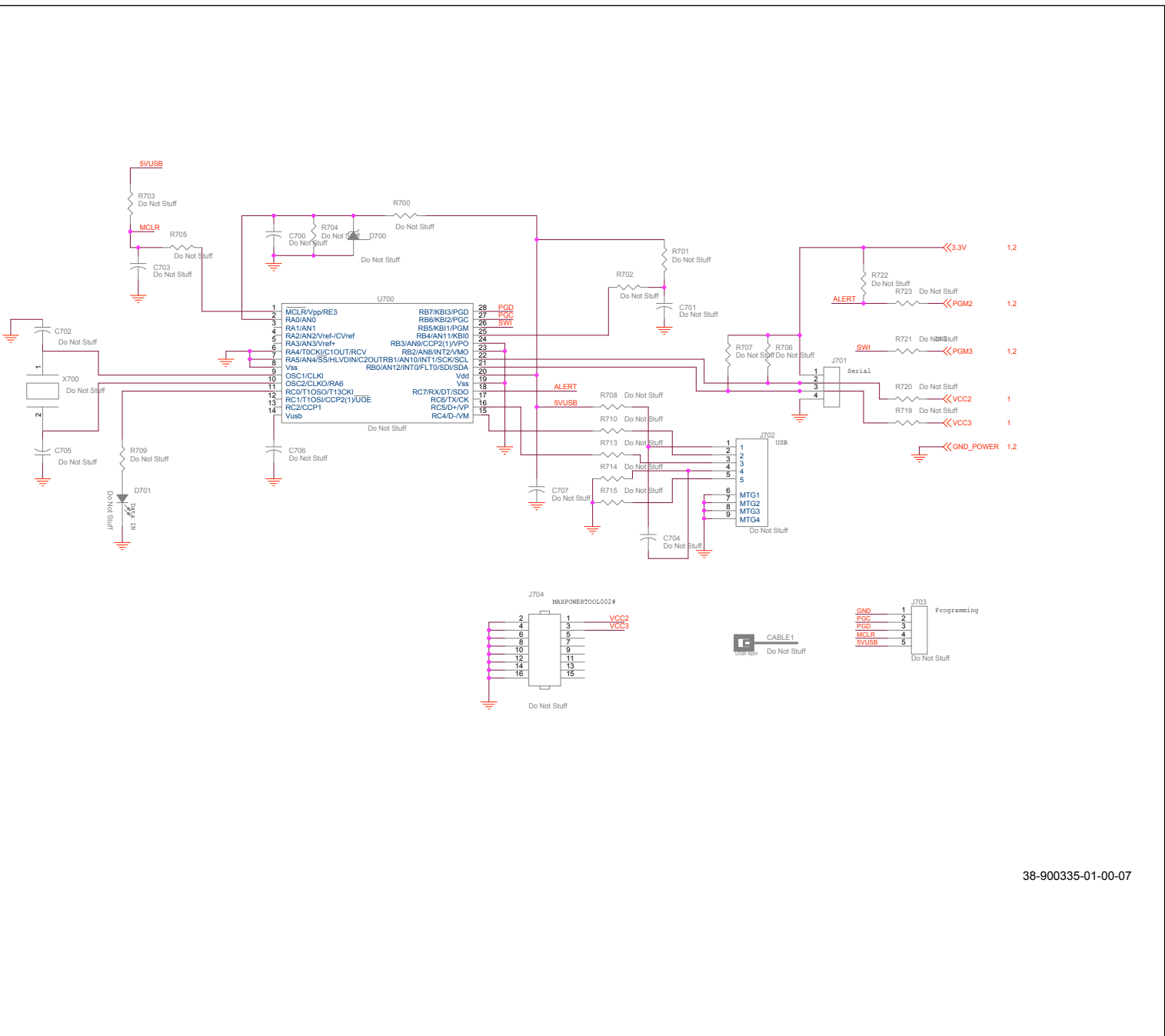
MAX20735 Schematics (continued)

- ⎓ VDDH 1
- ⎓ GND\_POWER 1,3
- ⎓ 3.3V 1,3
- ⎓ PGM1 1
- ⎓ PGM3 1,3
- ⎓ PGM2 1,3
- ⎓ STAT 1
- ⎓ OE 1
- ⎓ VCC3 1,3
- ⎓ VCC2 1,3
- ⎓ VOUT 1



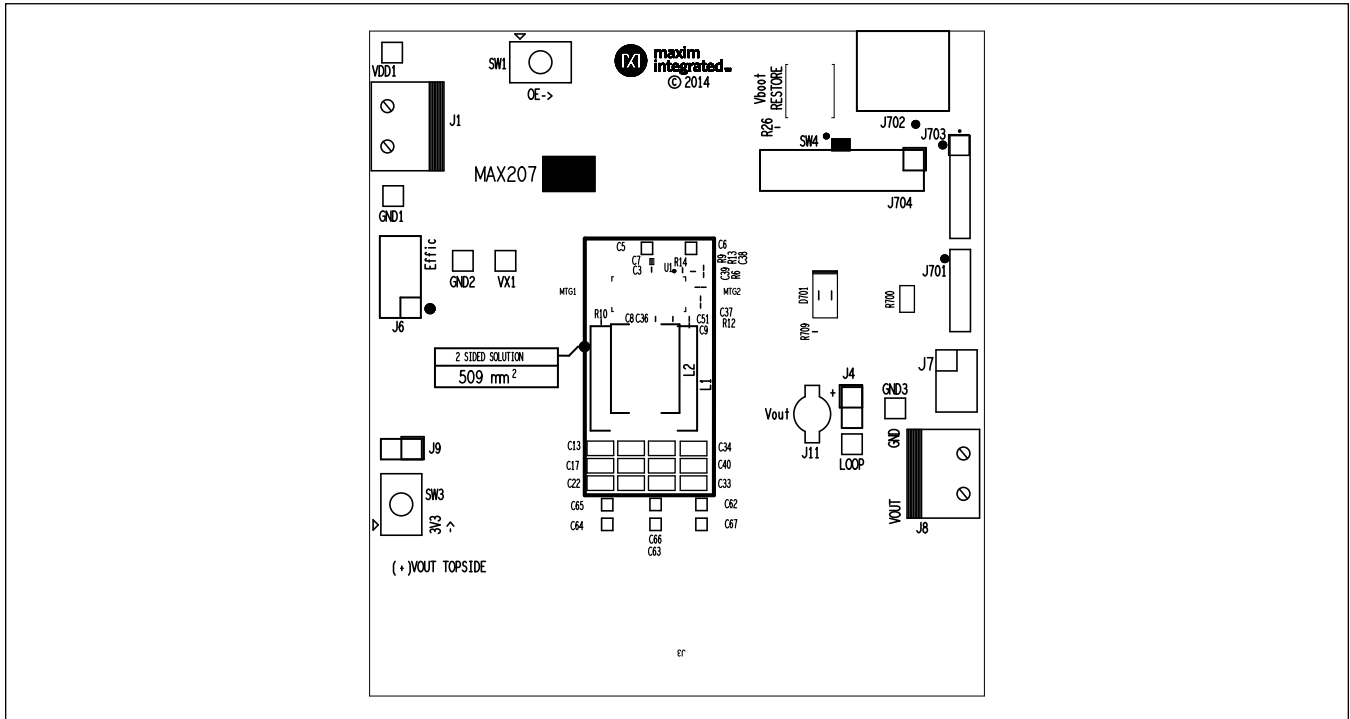
38-900335-01-00-07

MAX20735 Schematics (continued)

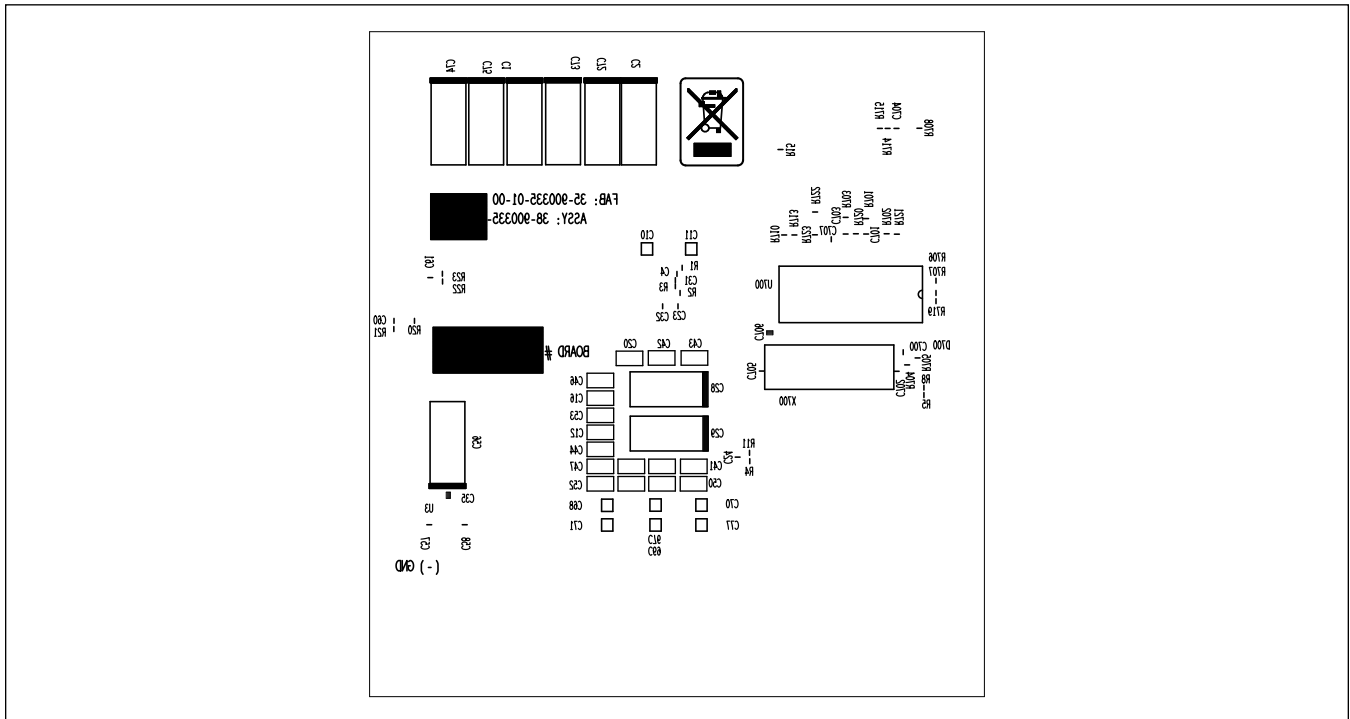


38-900335-01-00-07

MAX20735 PCB Layer



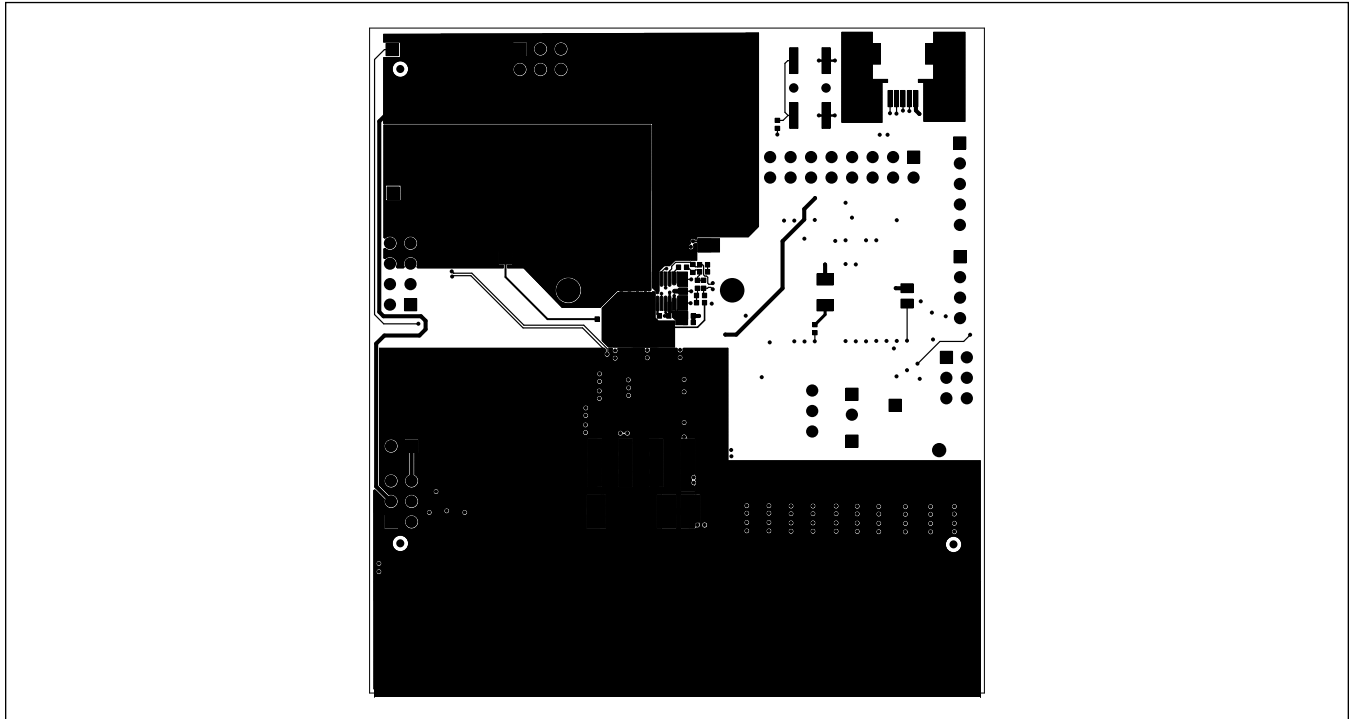
Top Silkscreen



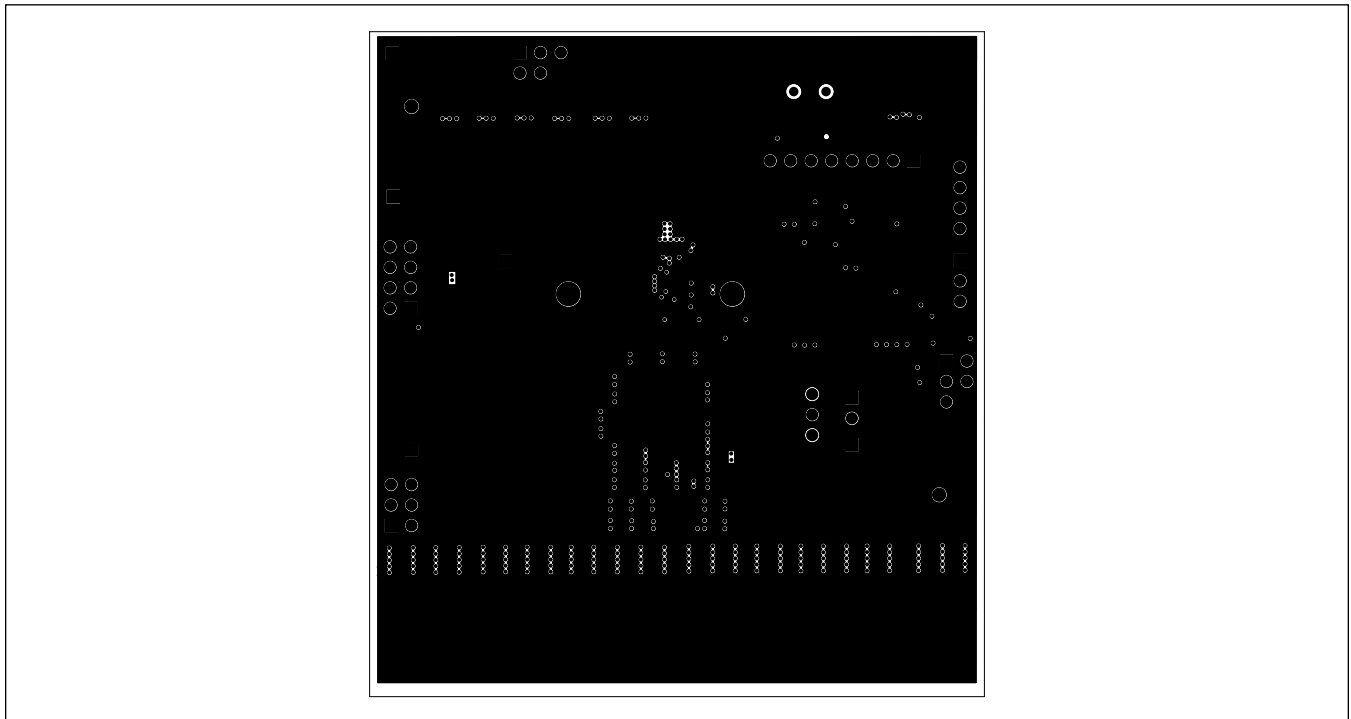
Bottom Silkscreen



MAX20735 PCB Layer (continued)

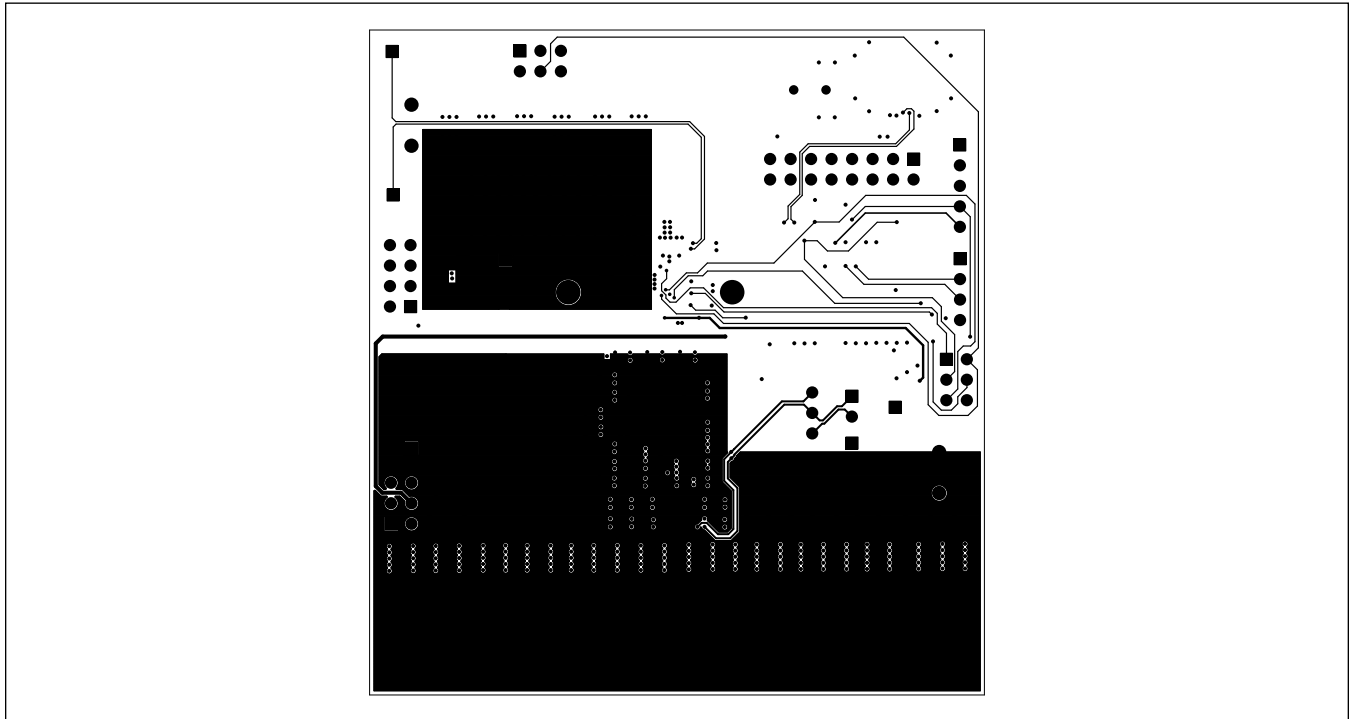


Layer 1

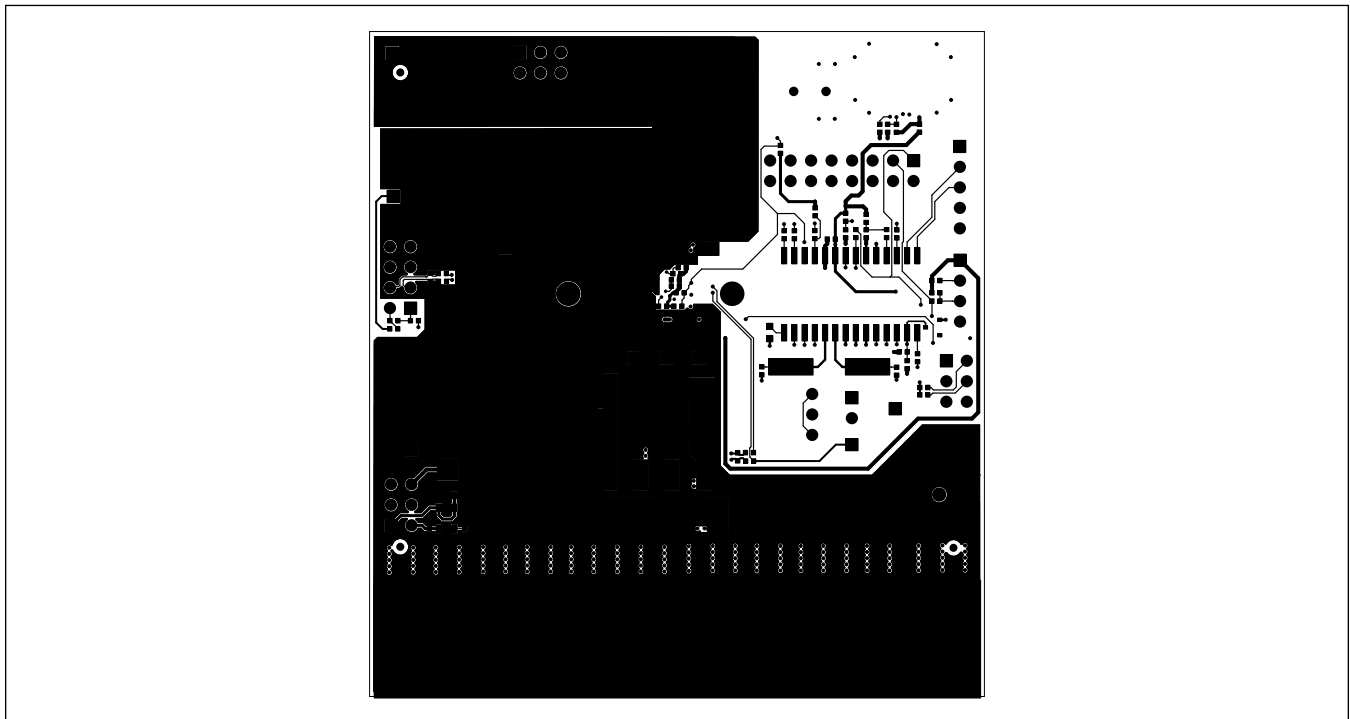


Layer 2

MAX20735 PCB Layer (continued)



Layer 3



Layer 4

### Revision History

REVISION NUMBER	REVISION DATE	DESCRIPTION	PAGES CHANGED
0	8/16	Initial release	—

For pricing, delivery, and ordering information, please contact Maxim Direct at 1-888-629-4642, or visit Maxim Integrated's website at [www.maximintegrated.com](http://www.maximintegrated.com).

*Maxim Integrated cannot assume responsibility for use of any circuitry other than circuitry entirely embodied in a Maxim Integrated product. No circuit patent licenses are implied. Maxim Integrated reserves the right to change the circuitry and specifications without notice at any time.*