



Chipsmall Limited consists of a professional team with an average of over 10 year of expertise in the distribution of electronic components. Based in Hongkong, we have already established firm and mutual-benefit business relationships with customers from,Europe,America and south Asia,supplying obsolete and hard-to-find components to meet their specific needs.

With the principle of “Quality Parts,Customers Priority,Honest Operation,and Considerate Service”,our business mainly focus on the distribution of electronic components. Line cards we deal with include Microchip,ALPS,ROHM,Xilinx,Pulse,ON,Everlight and Freescale. Main products comprise IC,Modules,Potentiometer,IC Socket,Relay,Connector.Our parts cover such applications as commercial,industrial, and automotives areas.

We are looking forward to setting up business relationship with you and hope to provide you with the best service and solution. Let us make a better world for our industry!



Contact us

Tel: +86-755-8981 8866 Fax: +86-755-8427 6832

Email & Skype: info@chipsmall.com Web: www.chipsmall.com

Address: A1208, Overseas Decoration Building, #122 Zhenhua RD., Futian, Shenzhen, China



MAX34406 Evaluation Kit

Evaluates: MAX34406

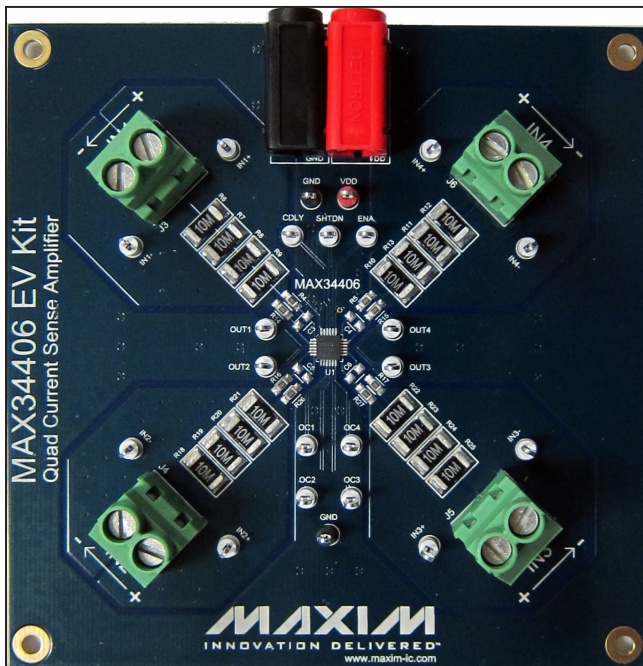
General Description

The MAX34406 evaluation kit (EV kit) simplifies evaluation of the MAX34406 quad current-sense amplifier with overcurrent threshold comparators. The EV kit is fully assembled and ready for operation. It is shipped with four 10mΩ sense resistors in parallel on each channel, which creates an effective sense resistance of 2.5mΩ. The EV kit ships with the MAX34406 device installed, which provides a fixed gain of 100V/V. The 2.5mΩ sense resistance and 100V/V gain provide an overcurrent threshold of 4A on each channel. The sense resistors on the EV kit can be changed to adjust the overcurrent threshold. The PCB and the terminals on the EV kit can support currents up to 32A on each channel.

Features

- ◆ Quick Evaluation of the MAX34406
- ◆ Fully Assembled and Tested
- ◆ Ready for Operation Out of the Box
- ◆ Configured for 4A Thresholds on Each Channel
- ◆ Support Currents Up to 32A on Each Channel
- ◆ Access to Sense Resistors for Threshold Adjustment
- ◆ Amplifier Filtering Can be Added
- ◆ Labeled Test Points for Key Signals
- ◆ PCB Mounting Holes

MAX34406 EV Kit Board



EV Kit Contents

- ◆ MAX34406 EV Kit Board

Equipment Needed

The following equipment is required to use the MAX34406 EV kit:

- 3.3V to 5V (10mA) DC power supply to supply the MAX34406 bias
- 4A current source (2V to 28V) to test the full range of the current-sense amplifier
- Small flat-head screwdriver for attaching leads to the current-sense terminals

[Ordering Information](#) appears at end of data sheet.

MAX34406 Evaluation Kit

Evaluates: MAX34406

Getting Started

- Connect a 3.3V to 5V DC power supply to the red (+) and black (-) banana jacks and apply power. The DC power supply is used by the MAX34406 to power up the internal voltage reference, comparators, and logic. The power supply is not required for the current sense amplifiers and will not damage the device if it is left unconnected.
- Using a screwdriver, connect the through current to be measured to one or more of the green 2-position terminals (labeled IN1 to IN4). Be sure that the current flow is as shown on the PCB; otherwise, the current-sense amplifier will not indicate any current flow. Current flowing in the wrong direction will not damage the device.
- Apply 0 to 3A (with a common-mode voltage of 2V to 28V) through the green terminals and measure the resulting analog signal at the OUT test points near the center of the PCB ([Figure 2](#)). The OUT signals should change linearly from 0 to 750mV as the current changes from 0 to 3A.
- Applying more than 4A causes the overcurrent thresholds to fire and the SHTDN output and associated OC1 to OC4 outputs to assert. All these signals have labeled test points on the EV kit.

Component List

DESIGNATION	QTY	DESCRIPTION
C1	1	0.1 μ F capacitor
C2	1	0.01 μ F capacitor
C3–C10	8	Do not populate
J1	1	Red banana jack
J2	1	Black banana jack
J3–J6	4	2-position screw terminal
R1, R3, R28, R29, R30, R31	6	10k Ω resistors
R2	1	Do not populate
R4, R5, R14, R15, R16, R17, R26, R27	8	0 Ω resistors
R6–R13, R18–R25	16	10m Ω \pm 1% resistors
TP1–TP26	26	Test points
U1	1	Quad current-sense amplifier (24 TQFN-EP) Maxim MAX34406HETG+
—	—	PCB: MAX34406 EV Kit

MAX34406 Evaluation Kit Evaluates: MAX34406

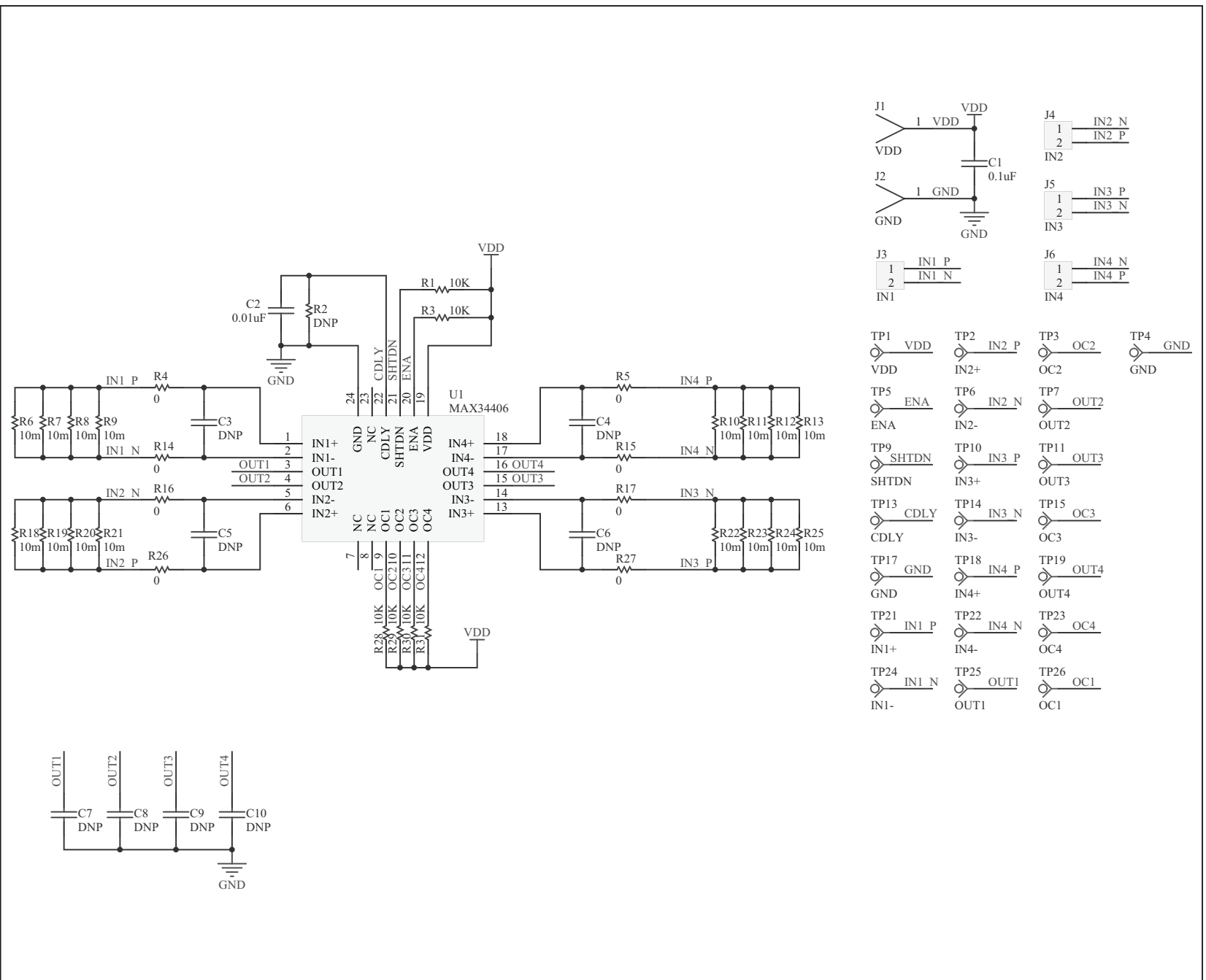


Figure 1. MAX34406 EV Kit Schematic

MAX34406 Evaluation Kit

Evaluates: MAX34406

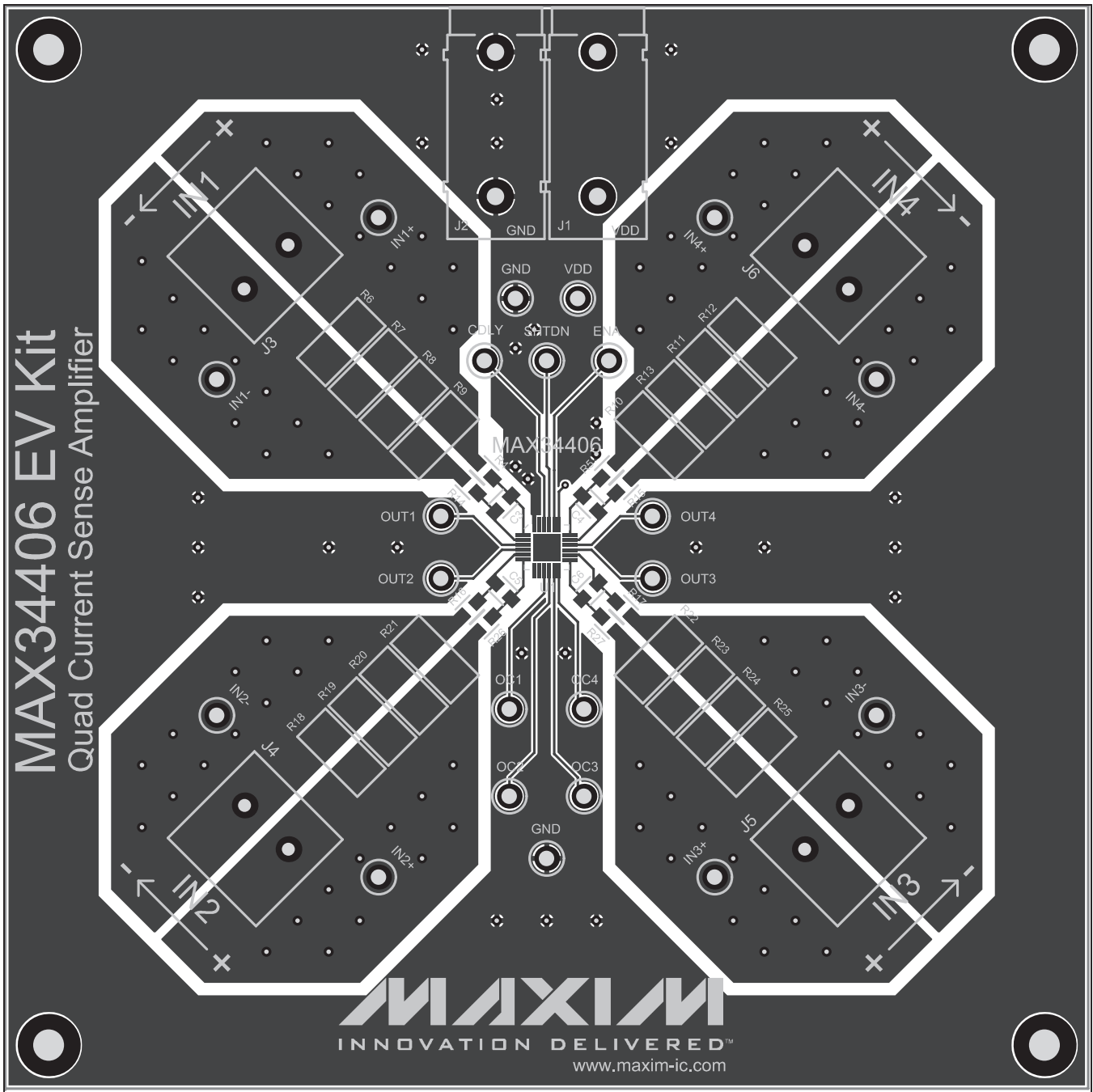


Figure 2. MAX34406 EV Kit PCB Top Drawing

MAX34406 Evaluation Kit

Evaluates: MAX34406

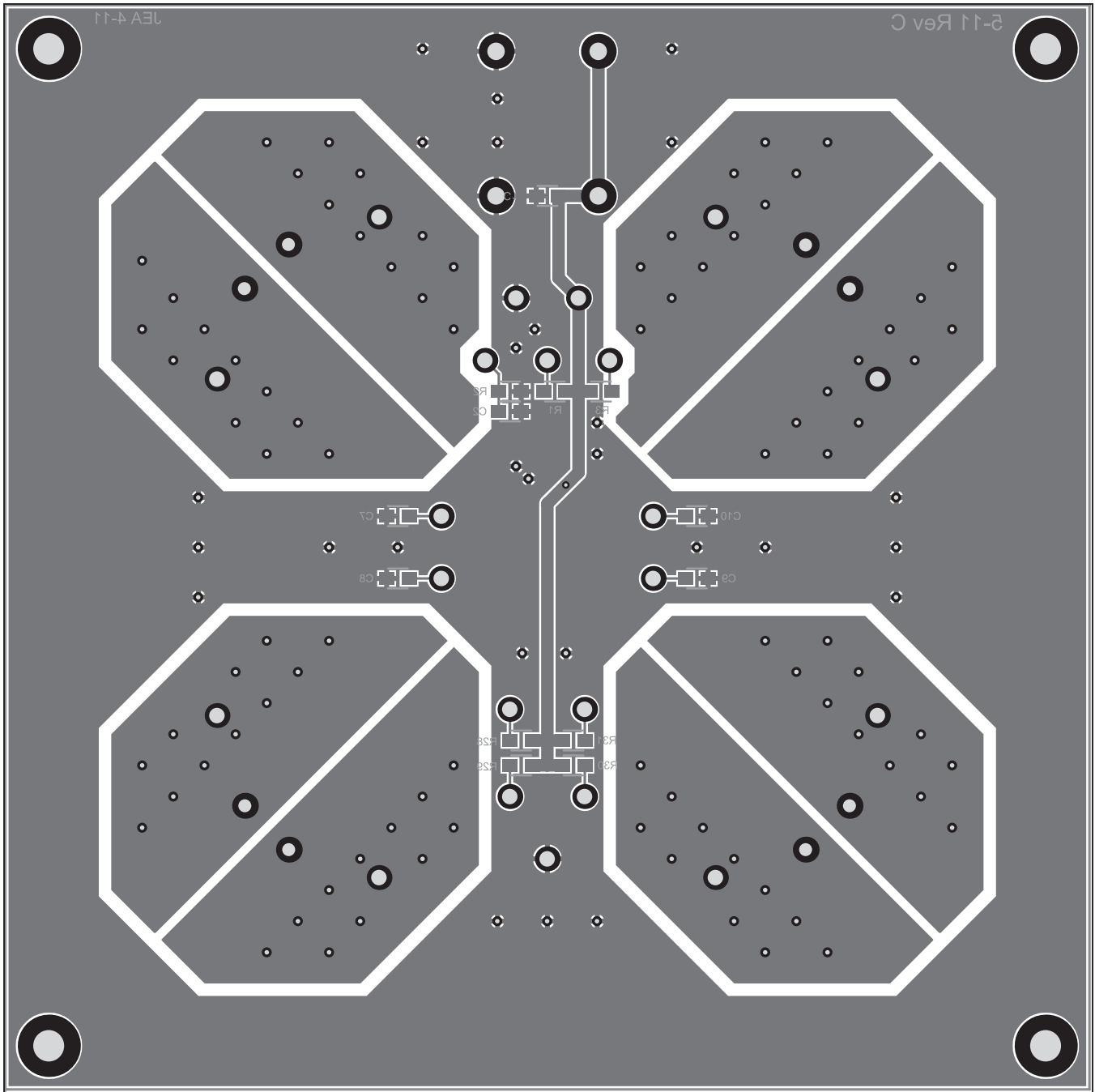


Figure 3. MAX34406 EV Kit PCB Bottom Drawing

MAX34406 Evaluation Kit

Evaluates: MAX34406

Ordering Information

PART	TYPE
MAX34406EVKIT#	EV Kit

#Denotes a RoHS-compliant device that may contain lead(Pb) under the RoHS requirements.

MAX34406 Evaluation Kit

Evaluates: MAX34406

Revision History

REVISION NUMBER	REVISION DATE	DESCRIPTION	PAGES CHANGED
0	11/11	Initial release	—

Maxim cannot assume responsibility for use of any circuitry other than circuitry entirely embodied in a Maxim product. No circuit patent licenses are implied. Maxim reserves the right to change the circuitry and specifications without notice at any time.

Maxim Integrated Products, 120 San Gabriel Drive, Sunnyvale, CA 94086 408-737-7600 _____ 7