



Chipsmall Limited consists of a professional team with an average of over 10 year of expertise in the distribution of electronic components. Based in Hongkong, we have already established firm and mutual-benefit business relationships with customers from,Europe,America and south Asia,supplying obsolete and hard-to-find components to meet their specific needs.

With the principle of “Quality Parts,Customers Priority,Honest Operation,and Considerate Service”,our business mainly focus on the distribution of electronic components. Line cards we deal with include Microchip,ALPS,ROHM,Xilinx,Pulse,ON,Everlight and Freescale. Main products comprise IC,Modules,Potentiometer,IC Socket,Relay,Connector.Our parts cover such applications as commercial,industrial, and automotives areas.

We are looking forward to setting up business relationship with you and hope to provide you with the best service and solution. Let us make a better world for our industry!



Contact us

Tel: +86-755-8981 8866 Fax: +86-755-8427 6832

Email & Skype: info@chipsmall.com Web: www.chipsmall.com

Address: A1208, Overseas Decoration Building, #122 Zhenhua RD., Futian, Shenzhen, China





MAX3541/MAX3542 Evaluation Kits

General Description

The MAX3541/MAX3542 evaluation kits (EV kits) simplify the testing and evaluation of the MAX3541/MAX3542 PAL, DVB-T, and hybrid tuners. The evaluation kits are fully assembled and tested at the factory. Standard 50Ω SMA connectors are included on the EV kits for the inputs and outputs to allow quick-and-easy evaluation on the test bench.

This document provides a list of equipment required to evaluate the device, a straightforward test procedure to verify functionality, a description of the EV kit circuits, the circuit schematics, a components list of materials for the kits, and artwork for each layer of the PCBs.

Features

- ◆ Easy Evaluation of the MAX3541/MAX3542
- ◆ 50Ω SMA Connectors
- ◆ All Critical Peripheral Components Included
- ◆ Fully Assembled and Tested
- ◆ PC Control Software Available at www.maxim-ic.com

Ordering Information

| PART | TYPE |
|--------------|--------|
| MAX3541EVKIT | EV Kit |
| MAX3542EVKIT | EV Kit |

Component List

| DESIGNATION | QTY | DESCRIPTION |
|--|-----|--|
| +3_3V, IF_AGC, MUX, TP1 | 4 | Red test points, PC mini red Keystone 5000 |
| VCC2 (+5V) | 0 | Not installed, PC mini red test point |
| C1, C6, C37, C70, C71, C72, C73, C74 | 8 | 100pF ±5% ceramic capacitors (0603) Murata GRM1885C1H101J |
| C2, C4, C5, C52, C53, C54, C56, C59, C62, C63, C64, C66, C86 | 13 | 1000pF ±5% ceramic capacitors (0402) Murata GRM1555C1H102J |
| C3 | 1 | 0.033μF ±5% ceramic capacitor (0805) Murata GRM21A7U1H333J |
| C7 | 1 | 2.0pF ±0.1pF ceramic capacitor (0402) Murata GRM1555C1H2R0B |
| C8, C78, C87 | 3 | 1000pF ±10% ceramic capacitors (0603) Murata GRM188R71H102K |
| C9, C12 | 2 | 39pF ±5% ceramic capacitors (0603) Murata GRM1885C1H390J |
| C10, C30 | 2 | 0.1μF ±10% ceramic capacitors (0402) Murata GRM155R71C104K |
| C11 | 1 | 5.6pF ±0.25pF ceramic capacitor (0402) Murata GRM1555C1H5R6C |
| C13, C14 | 0 | Not installed, ceramic capacitors |
| C17 | 1 | 22nF ±10% ceramic capacitor (0603) Murata GRM188R71H223K |

| DESIGNATION | QTY | DESCRIPTION |
|---------------|-----|---|
| C18 | 1 | 4.7pF ±0.25pF ceramic capacitor (0402) Murata GRM1555C1H4R7C |
| C21, C25, C35 | 3 | 82pF ±5% ceramic capacitors (0603) Murata GRM1885C1H820J |
| C28 | 1 | 150pF ±5% ceramic capacitor (0603) Murata GRM1885C1H151 |
| C29, C31 | 1 | 47pF ±5% ceramic capacitors (0603) Murata GRM1885C1H470J |
| C45 | 1 | 22pF ±5% ceramic capacitor (0402) Murata GRM1555C1H220J |
| C55 | 1 | 10μF ±10% ceramic capacitor (0805) Murata GRM21BR61A106K |
| C60, C61 | 2 | 100pF ±5% ceramic capacitors (0402) Murata GRM1555C1H101J |
| C65 | 1 | 0.47μF ±10% ceramic capacitor (0805) Murata GRM219R71C474K |
| C75, C77 | 2 | 0.1μF ±10% ceramic capacitors (0603) Murata GRM188R71C104K |
| C76 | 1 | 10μF ±10% tantalum capacitor (R case) AVX TAJR106K006 |
| C82 | 1 | 820pF ±10% ceramic capacitor (0603) Murata GRM188R71H821K |
| C85 | 1 | 560pF ±10% ceramic capacitor (0402) Murata GRM155R71H561K |
| C96 | 1 | 8.2pF ±0.25pF ceramic capacitor (0603) Murata GRM1885C1H8R2C |

Evaluate: MAX3541/MAX3542



MAX3541/MAX3542 Evaluation Kits

Component List (continued)

| DESIGNATION | QTY | DESCRIPTION |
|---------------|-----|---|
| D1 | 1 | DA221 dual switching diode ROHM DA221TL |
| FL2 | 1 | X6966 bandpass filter EPCOS B39361X6966N201 |
| GND1, GND4 | 2 | Black test points, PC mini black Keystone 5001 |
| GND2 | 0 | Not installed, PC mini black test point |
| J3, J19 | 2 | Connector SMA end-launch jack receptacles, 0.062in Johnson 142-0701-801 |
| J13 | 1 | DB25 right-angle female connector AMP 5745783-4 |
| JP1, JP2, JP6 | 3 | 1 x 2-pin in-line headers, 100 mil centers Sullins PEC36SAAN |
| JP11, JP12 | 2 | 1 x 3-pin in-line header, 100 mil centers Sullins PEC36SAAN |
| L1 | 1 | 18nH ±5% inductor (0603) Murata LQG18HN18NJ00 |
| L2, L15 | 2 | 270nH ±5% inductors (0603) TOKO LL1608-FSLR27J |
| L3 | 1 | 200nH ±5% inductor (0603) Murata LQW18ANR20J00 |
| L5 | 1 | 15nH ±3% inductor (0402) Murata LQW15AN15NH00 |
| L9 | 1 | 120nH ±5% inductor (0603) Murata LQW18ANR12J0 |
| L10 | 1 | 220nH ±5% inductor (0603) Murata LQW18ANR22J00 |
| L11 | 1 | 56pF ±5% ceramic capacitor (0603) Murata GRM1885C1H560J |
| L14 | 1 | 56nH ±5% inductor (0603) TOKO LL1608-FSL56NJ |

| DESIGNATION | QTY | DESCRIPTION |
|---------------------------|-----|--|
| R1 | 1 | 2kΩ ±5% resistor* (0603) |
| R3, R8, R48 | 3 | 100Ω ±5% resistors* (0402) |
| R4, R55 | 2 | 0Ω ±0% resistors—short* (0603) |
| R5 | 1 | 75Ω ±5% resistor* (0402) |
| R6, R13, R40, R41, R42 | 5 | 100Ω ±5% resistors* (0603) |
| R7, R9 | 2 | 10kΩ ±5% resistors* (0402) |
| R10 | 1 | 86.6Ω ±1% resistor* (0603) |
| R11 | 1 | 43.2Ω ±1% resistor* (0603) |
| R12, R28, R49 | 3 | 1kΩ ±5% resistors* (0603) |
| R14 | 1 | 300Ω ±5% resistor* (0603) |
| R15, R16 | 2 | 36Ω ±5% resistors* (0603) |
| R38 | 1 | 2.2kΩ ±5% resistor* (0402) |
| R39 | 1 | 4.3kΩ ±5% resistor* (0402) |
| R43, R44, R58 | 3 | 5.1kΩ ±5% resistors* (0603) |
| R45, R46, R47 | 3 | 2.7kΩ ±5% resistors* (0603) |
| R56, R59, R60 | 3 | Not installed, resistors |
| R61, R62 | 2 | 39Ω ±5% resistors (0603) |
| T8 | 1 | 4:1 transformer TOKO 617PT-1664 |
| U3 | 1 | SN74LV07ADR ±0% hex buffer/driver Texas Instruments SN74LV07ADR |
| U4 | 1 | See the <i>EV Kit-Specific Component List</i> |
| Y2 | 1 | 8MHz crystal Citizen America HCM49-8.000MABJ-UT |
| — | 3 | Shunts, shorting jumper (JP2, JP11, JP12) Sullins SSC02SYAN |
| — | 1 | PCB: MAX3541/42 Evaluation Kit |

*Use lead-free parts only.

**EP = Exposed pad.

EV Kit-Specific Component List

| EV KIT PART NUMBER | DESIGNATION | DESCRIPTION |
|--------------------|-------------|---|
| MAX3541EVKIT | U4 | Complete single-conversion television tuner (48 fCLGA-EP) Maxim MAX3541ELM+ |
| MAX3542EVKIT | | Complete single-conversion television tuner (48 fCLGA-EP) Maxim MAX3542ULM+ |

MAX3541/MAX3542 Evaluation Kits

Component Suppliers

| SUPPLIER | PHONE | WEBSITE |
|--|--------------|------------------------------|
| AVX Corporation | 843-946-0238 | www.avxcorp.com |
| Citizen America Corp. | 310-781-1460 | www.citizenocrystal.com |
| EPCOS AG | 732-906-4300 | www.epcos.com |
| Johnson Components | 507-833-8822 | www.johnsoncomponents.com |
| Keystone Electronics Corp. | 209-796-2032 | www.keyelco.com |
| Murata Electronics North America, Inc. | 770-436-1300 | www.murata-northamerican.com |
| ROHM Co., Ltd. | 858-625-3630 | www.rohm.com |
| Sullins Electronics Corp. | 760-744-0125 | www.sullinselectronics.com |
| Texas Instruments Inc. | 972-644-5580 | www.ti.com |
| TOKO America, Inc. | 847-297-0070 | www.tokoam.com |

Note: Indicate that you are using the MAX3541/MAX3542 when contacting these component suppliers.

Quick Start

Required Equipment

- One power supply capable of supplying at least 500mA at +3.3V
- One dual-output power supply capable of supplying up to 3V at least 5mA (to apply gain control voltages)
- One RF signal generator capable of delivering at least 0dBm of output power at frequency. (HP 8482A or equivalent)
- One RF spectrum analyzer capable of covering the operating frequency range of the device.
- A PC (486DX33 or better) with Windows® 95/98, 2000, NT 4.0, XP or later operating system, 64MB of memory, and an available parallel port
- One 25-pin parallel cable
- 50Ω SMA cables
- (Optional) One multichannel digital oscilloscope
- (Optional) A network analyzer to measure return loss
- (Optional) An ammeter to measure supply current

Connections and Setup

This section provides a step-by-step guide to testing the basic functionality of the EV kits in UHF mode.

Caution: Do not turn on DC power or RF signal generators until all connections are completed.

- 1) Verify that the JP1 and JP6 shunts are removed, the JP2 shunt is installed, and JP11 and JP12 have shunts across pins 1-2.
- 2) With its output disabled, set the DC power supply to +3.3V. Connect the power supply to the V_{CC} (through an ammeter if desired) and GND terminals on the EV kits. If available, set the current limit to 500mA.
- 3) With its output disabled, set both outputs of the dual-output DC power-supply voltages to +3V. Connect one of the outputs to the TP1 connector and the other output to the IF_AGC connector.
- 4) With its output disabled, set the RF signal generator to a 50.5MHz frequency and a -80dBm power level. Connect the output of the RF signal generator to the SMA connector labeled RFIN on the evaluation board.
- 5) Connect a 25-pin parallel cable between the PC's parallel port and the MAX3541/MAX3542 evaluation board.
- 6) Turn on the +3.3V V_{CC} power supply, followed by the +3V dual-output gain-control power supply. The supply current from the +3.3V V_{CC} supply should read approximately 230mA. Be sure to adjust the power supply to account for any voltage drop across the ammeter.

Windows is a registered trademark of Microsoft Corp.

MAX3541/MAX3542 Evaluation Kits

- 7) Install and run the MAX3541/MAX3542 control software. Software is available for download at www.maxim-ic.com/evkitssoftware.
- 8) Load the default register settings from the control software by clicking Edit: Load Defaults.
- 9) Connect the SMA connector labeled IF_OUT on the evaluation board to a spectrum analyzer or to an oscilloscope.
- 10) Enable the RF signal generator's output.
- 11) Set the center frequency to the IF frequency set on the control software. Check the output.

Gain Adjustment Calculations

Add an additional 6dB to the voltage gain to account for the 2:1 transformer on the output. Add another 3.96dB to the voltage gain to account for the minimum loss pad (R10 and R11) on the input. When measuring noise figure, account for 5.7dB power loss of the minimum loss pad.

A 36MHz IF anti-aliasing filter is provided on the EV kits (C9, C12, C21, C25, C28, C29, C31, C35, L3, L9, L10, and L11). Anti-aliasing filter requirements vary depending on applications; users should consult their demodulator vendors for more specific information.

Layout Considerations

The MAX3541/MAX3542 EV kits serve as a guide for PCB layout. Keep RF signal lines as short as possible to minimize losses and radiation. Use controlled impedance on all high-frequency traces. The exposed pad must be soldered evenly to the board's ground plane for proper operation. Use abundant vias beneath the exposed pad for maximum heat dissipation. Use abundant ground vias between RF traces to minimize undesired coupling.

To minimize coupling between different sections of the IC, the ideal power-supply layout is a star configuration, which has a large decoupling capacitor at the central VCC node. The VCC traces branch out from this node, with each trace going to separate VCC pins of the MAX3541/MAX3542. Each VCC pin must have a bypass capacitor with low impedance to ground at the frequency of interest. Do not share ground vias among multiple connections to the PCB ground plane.

MAX3541/MAX3542 Evaluation Kits

Evaluate: MAX3541/MAX3542

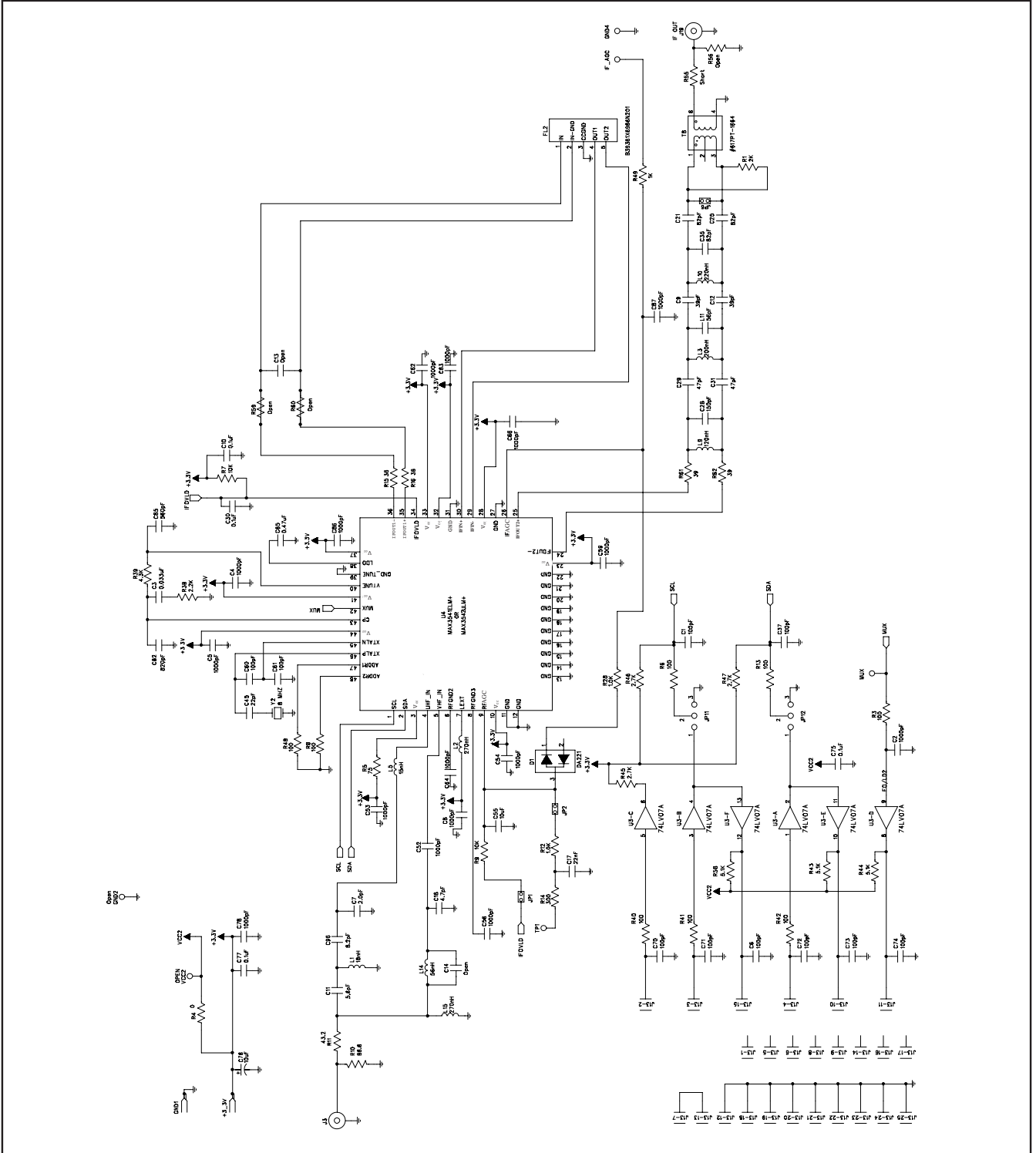


Figure 1. MAX3541/MAX3542 EV Kits Schematic

MAX3541/MAX3542 Evaluation Kits

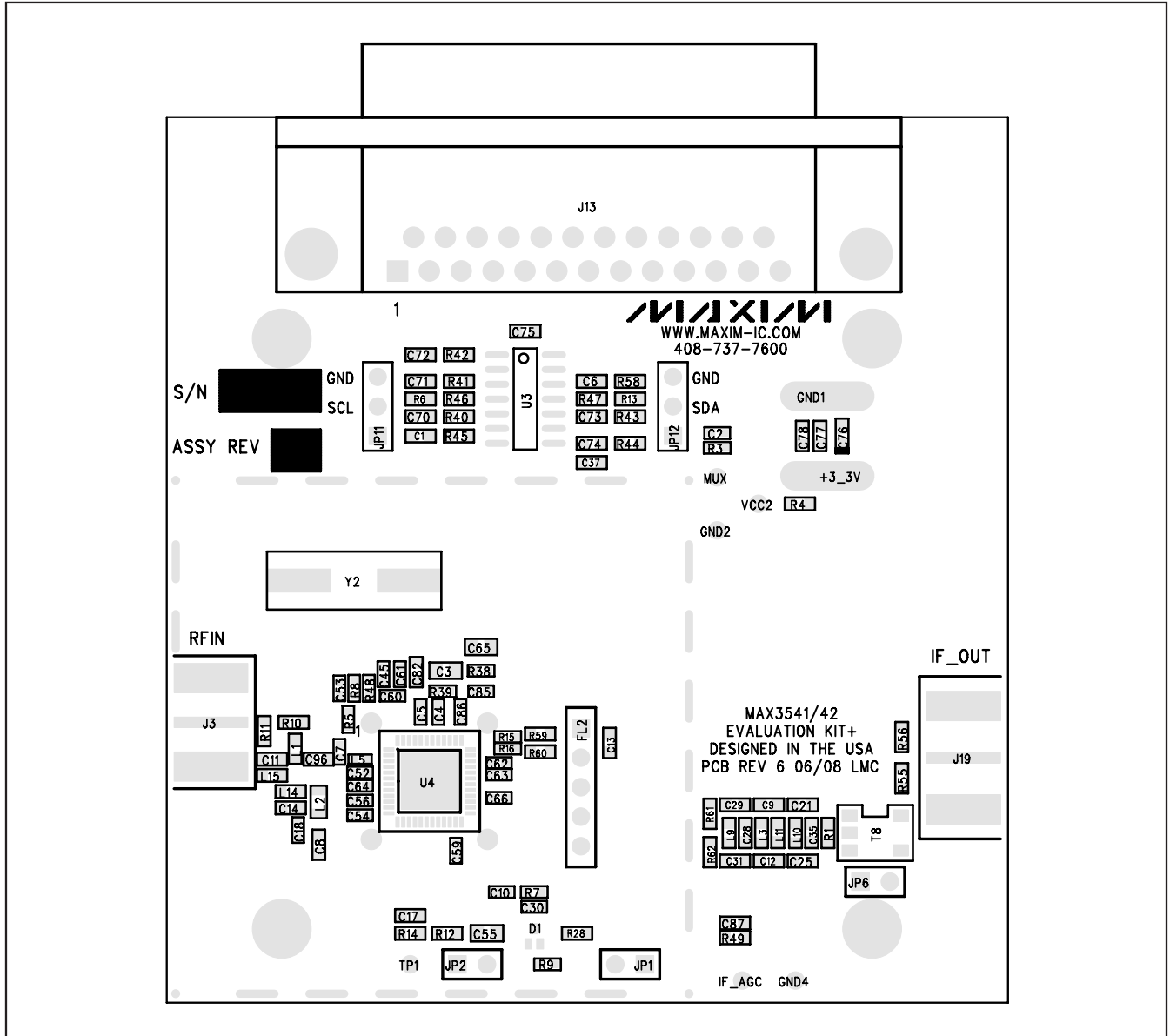


Figure 2. MAX3541/MAX3542 EV Kits PCB Layout—Component Placement Guide

MAX3541/MAX3542 Evaluation Kits

Evaluate: MAX3541/MAX3542

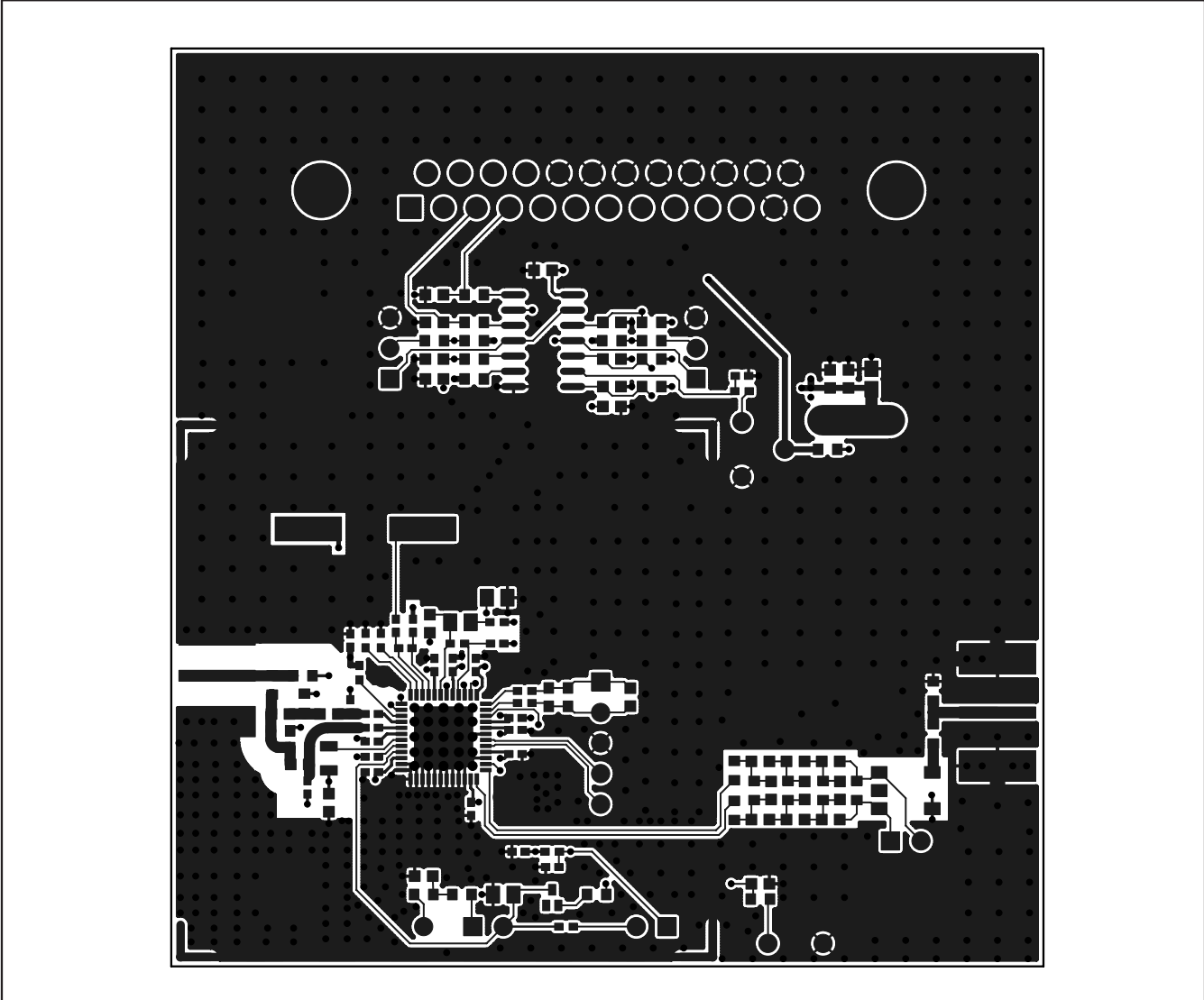


Figure 3. MAX3541/MAX3542 EV Kits PCB Layout—Primary Component Side

MAX3541/MAX3542 Evaluation Kits

Evaluate: MAX3541/MAX3542

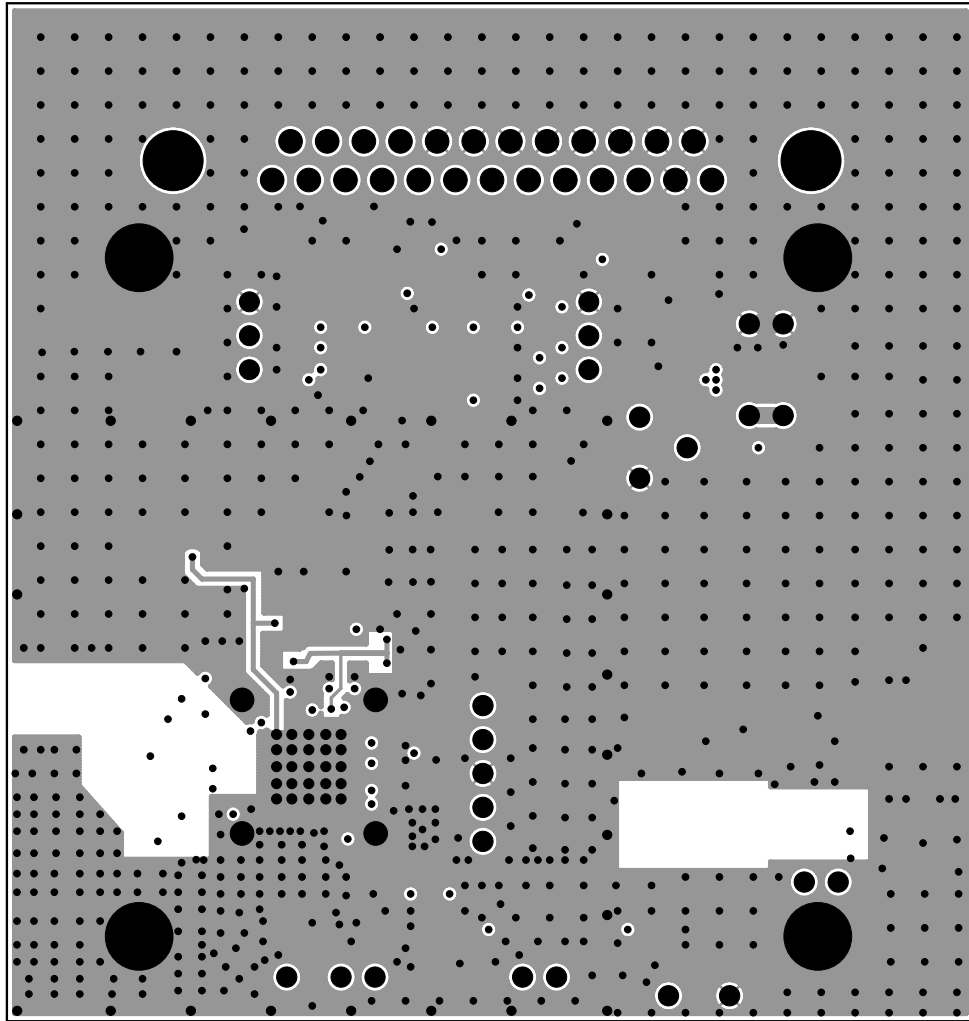


Figure 4. MAX3541/MAX3542 EV Kits PCB Layout—Inner Layer 2

MAX3541/MAX3542 Evaluation Kits

Evaluate: MAX3541/MAX3542

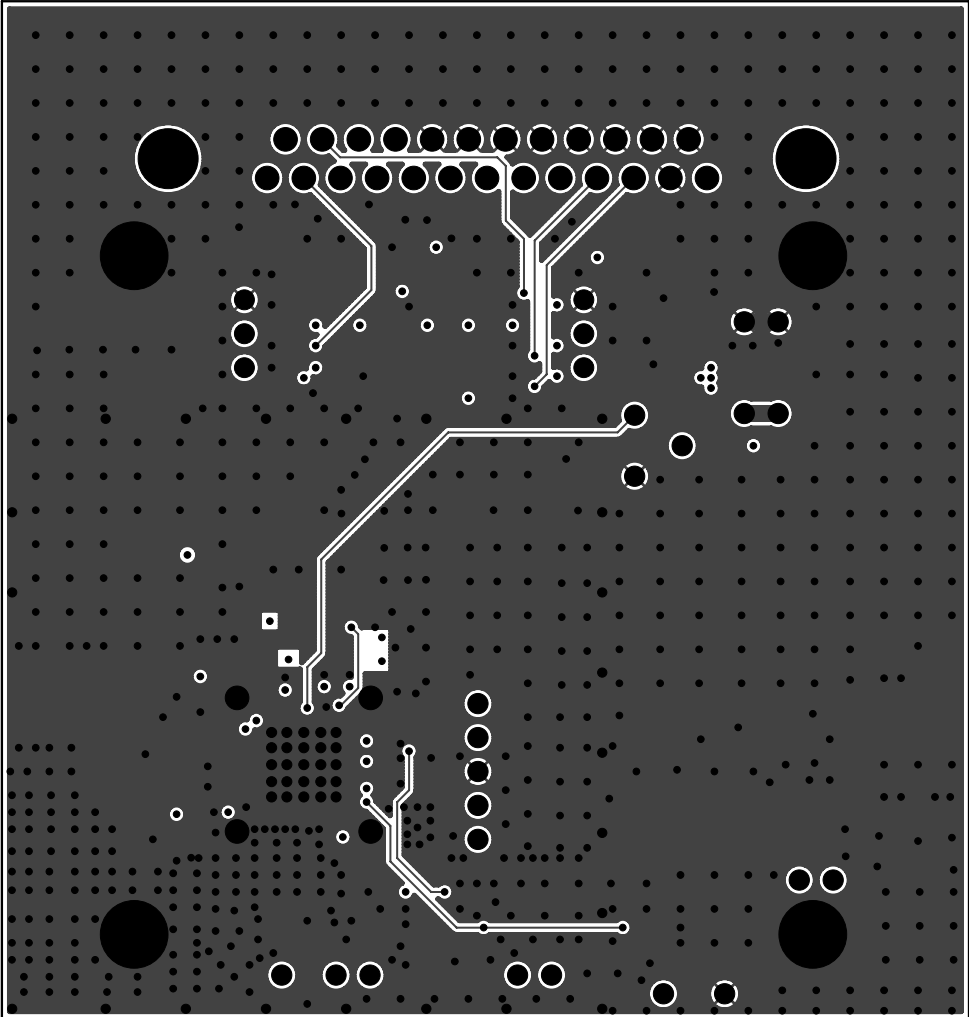


Figure 5. MAX3541/MAX3542 EV Kits PCB Layout—Inner Layer 3

MAX3541/MAX3542 Evaluation Kits

Evaluate: MAX3541/MAX3542

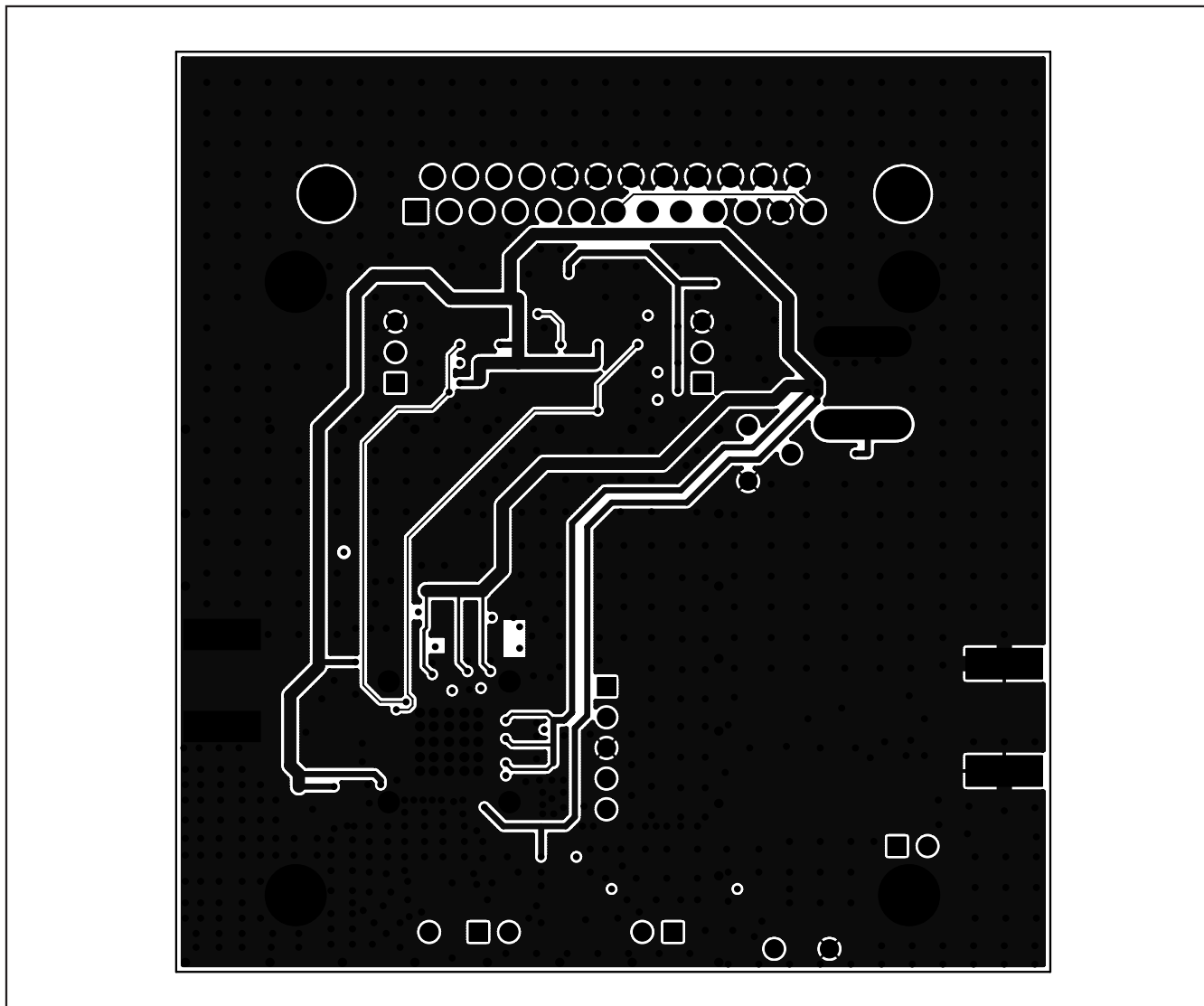


Figure 6. MAX3541/MAX3542 EV Kits PCB Layout—Secondary Component Side

Maxim cannot assume responsibility for use of any circuitry other than circuitry entirely embodied in a Maxim product. No circuit patent licenses are implied. Maxim reserves the right to change the circuitry and specifications without notice at any time.

10 **Maxim Integrated Products, 120 San Gabriel Drive, Sunnyvale, CA 94086 408-737-7600**

© 2009 Maxim Integrated Products

Maxim is a registered trademark of Maxim Integrated Products, Inc.