



Chipsmall Limited consists of a professional team with an average of over 10 year of expertise in the distribution of electronic components. Based in Hongkong, we have already established firm and mutual-benefit business relationships with customers from,Europe,America and south Asia,supplying obsolete and hard-to-find components to meet their specific needs.

With the principle of “Quality Parts,Customers Priority,Honest Operation,and Considerate Service”,our business mainly focus on the distribution of electronic components. Line cards we deal with include Microchip,ALPS,ROHM,Xilinx,Pulse,ON,Everlight and Freescale. Main products comprise IC,Modules,Potentiometer,IC Socket,Relay,Connector.Our parts cover such applications as commercial,industrial, and automotives areas.

We are looking forward to setting up business relationship with you and hope to provide you with the best service and solution. Let us make a better world for our industry!



Contact us

Tel: +86-755-8981 8866 Fax: +86-755-8427 6832

Email & Skype: info@chipsmall.com Web: www.chipsmall.com

Address: A1208, Overseas Decoration Building, #122 Zhenhua RD., Futian, Shenzhen, China





MAX4374 Evaluation Kit

General Description

The MAX4374 evaluation kit (EV kit) provides a proven design to evaluate the MAX4374 low-cost, micropower, high-side current-sense supervisor that contains a high-side current-sense amplifier, bandgap reference, and comparator with latching output. This EV kit demonstrates the MAX4374 in a 10-pin μ MAX[®] package. The MAX4374 is also available in 14-pin SO, but that package is not compatible with this EV kit.

The MAX4374 EV kit PCB comes with a MAX4374FEUB+ installed, which is the 50V/V gain version. The MAX4374 EV kit can also be used to evaluate the MAX4374T (20V/V gain version), MAX4374H (100V/V gain version), MAX4375T (20V/V gain version), MAX4375F (50V/V gain version), and MAX4375H (100V/V gain version). Contact the factory for free samples of the pin-compatible MAX4374TEUB+, MAX4374HEUB+, MAX4375TEUB+, MAX4375FEUB+, or MAX4375HEUB+ devices.

Features

- ◆ Precision Real-Time Current Monitoring
- ◆ Overcurrent Protection and Reset Circuits
- ◆ Overvoltage Indicator Circuit
- ◆ 0 to 28V Input Common-Mode Range
- ◆ 50 μ A Supply Current
- ◆ 1mV (max) Input Offset Voltage
- ◆ 2% (max) Full-Scale Accuracy
- ◆ Lead(Pb)-Free and RoHS Compliant
- ◆ Proven PCB Layout
- ◆ Fully Assembled and Tested

Ordering Information

| PART | TYPE |
|---------------|--------|
| MAX4374EVKIT+ | EV Kit |

μ MAX is a registered trademark of Maxim Integrated Products, Inc.

+Denotes lead(Pb)-free and RoHS compliant.

Component List

| DESIGNATION | QTY | DESCRIPTION |
|-------------|-----|---|
| C1 | 1 | 0.1 μ F \pm 10%, 16V X7R ceramic capacitor (0603) Murata GRM188R71C104K |
| C2 | 1 | 4.7 μ F \pm 10%, 6.3V X5R ceramic capacitor (0603) Murata GRM188R60J475K |
| C3 | 1 | 0.22 μ F \pm 10%, 16V X7R ceramic capacitor (0603) Murata GRM188R71C224K |
| C4 | 1 | 10 μ F \pm 20%, 25V X5R ceramic capacitor (1206) Murata GRM31CR61E106K |
| C5 | 0 | Not installed, capacitor |
| M1 | 1 | 30V, 12A p-channel MOSFET (6 SC70) Vishay SiA421DJ |
| M2 | 1 | 30V, 2.5A dual n-channel MOSFET (6 SuperSOT) Fairchild FDC6561AN |

| DESIGNATION | QTY | DESCRIPTION |
|-------------|-----|---|
| RSENSE | 1 | 0.075 Ω \pm 1%, 1/2W sensing resistor (1206) IRC LRC-LR1206LF-01-R075-F |
| R1, R3 | 2 | 10k Ω \pm 5% resistors (0603) |
| R2 | 1 | 100k Ω \pm 5% resistor (0603) |
| R4 | 1 | 20k Ω \pm 5% resistor (0603) |
| R5 | 1 | 470k Ω \pm 5% resistor (0603) |
| R6 | 1 | 52.3k Ω \pm 1% resistor (0603) |
| R8 | 1 | 205k Ω \pm 1% resistor (0603) |
| R7, R9 | 2 | 10k Ω \pm 1% resistors (0603) |
| S1 | 1 | Pushbutton switch |
| U1 | 1 | Current-sense amplifier (10 μ MAX) Maxim MAX4374FEUB+ |
| — | 1 | PCB: MAX4374 Evaluation Kit+ |

MAX4374 Evaluation Kit

Component Suppliers

| SUPPLIER | PHONE | WEBSITE |
|--|--------------|-----------------------------|
| Fairchild Semiconductor | 888-522-5372 | www.fairchildsemi.com |
| IRC, Inc. | 361-992-7900 | www.irctt.com |
| Murata Electronics North America, Inc. | 770-436-1300 | www.murata-northamerica.com |
| Vishay | 402-563-6866 | www.vishay.com |

Note: Indicate that you are using the MAX4374 when contacting these component suppliers.

Quick Start

Recommended Equipment

- MAX4374 EV kit
- 5V/10mA DC power supply
- 12V/1.5A DC power supply
- An electronic load capable of sinking 1.1A (e.g., HP 6060B)
- Two digital voltmeters

Procedure

The MAX4374 EV kit is fully assembled and tested. Follow the steps below to verify the board operation.

Caution: Do not turn on power supply or the electronic load until all connections are completed.

- 1) Connect the positive terminal of the 5V supply to the VCC pad. Connect the negative terminal of the 5V supply to the GND pad.
- 2) Connect the positive terminal of the 12V supply to the VIN pad. Connect the negative terminal of the 12V supply to the GND pad.
- 3) Set the electronic load to sink 500mA.
- 4) Connect the electronic load's positive terminal to the LOAD pad and the negative terminal to the GND pad.
- 5) Connect the first voltmeter across the OUT and GND pads.
- 6) Connect the second voltmeter across the COUT2 and GND pads.
- 7) Turn on the power supplies.
- 8) Turn on the electronic load.
- 9) Verify that the OUT voltmeter reading is approximately 1.875V and the COUT2 voltmeter is approximately 0V.

10) Slowly increase the sink current to above 1A. When the OUT voltage reaches approximately 3.75V, the comparator output of the part trips the PMOS switches and shuts off the load-current path.

11) Verify that the overcurrent circuitry shuts off the load current.

12) Reset the current path by pressing the S1 pushbutton after an overcurrent condition.

Detailed Description of Hardware

The MAX4374 evaluation kit (EV kit) provides a proven design to evaluate the MAX4374 low-cost, micropower, high-side current-sense supervisor that contains a high-side current-sense amplifier, bandgap reference, and comparator with latching output. This EV kit demonstrates the MAX4374 in a 10-pin μ MAX package. The MAX4374 is also available in 14-pin SO, but that package is not compatible with this EV kit.

Measuring the Load Current

The load current is measured as a voltage drop (V_{SENSE}) across an external sense resistor. This voltage is then amplified by the current-sense amplifier and presented as a voltage at its output pin (OUT). Like all differential amplifiers, the output voltage has two components of error, an offset error and a gain error. The offset error affects accuracy at low V_{SENSE} and the gain error affects accuracy at large V_{SENSE} . By minimizing both offset and gain errors, accuracy can be optimized over a wide dynamic range.

Output-Voltage Calculation

The MAX4374 EV kit is installed with a MAX4374FEUB+, which has a gain of 50V/V. The current-sense resistor (R_{SENSE}) value is 0.075Ω with $\pm 1\%$ tolerance. The V_{OUT} is given by:

$$V_{OUT} = I_{LOAD} \times R_{SENSE} \times A_V$$

where A_V is the gain and I_{LOAD} is the current load applied to the device. Note that A_V for the MAX4374FEUB+ is 50V/V.

MAX4374 Evaluation Kit

Overcurrent Protection Circuit

The MAX4374 evaluation kit (EV kit) has an on-board overcurrent protection circuit. The overcurrent protection circuit uses the latched output (COUT1) to control the external p-channel MOSFET (M1) through a level translator (M2). M1, controlled by the MAX4374, opens the current path during overload conditions. When the load current exceeds 1A, COUT1 turns M1 off. Reset the current path by pressing the pushbutton (S1) after an overcurrent condition.

Overvoltage Indicator Circuit

The MAX4374 evaluation kit (EV kit) uses the open-drain comparator output (COUT2) as the overvoltage indicator. The COUT2 pin is at 0V when VIN is below 13V. When VIN is above 13V, COUT2 will be pulled high to VCC by the external pullup resistor.

Evaluates: MAX4374/MAX4375

MAX4374 Evaluation Kit

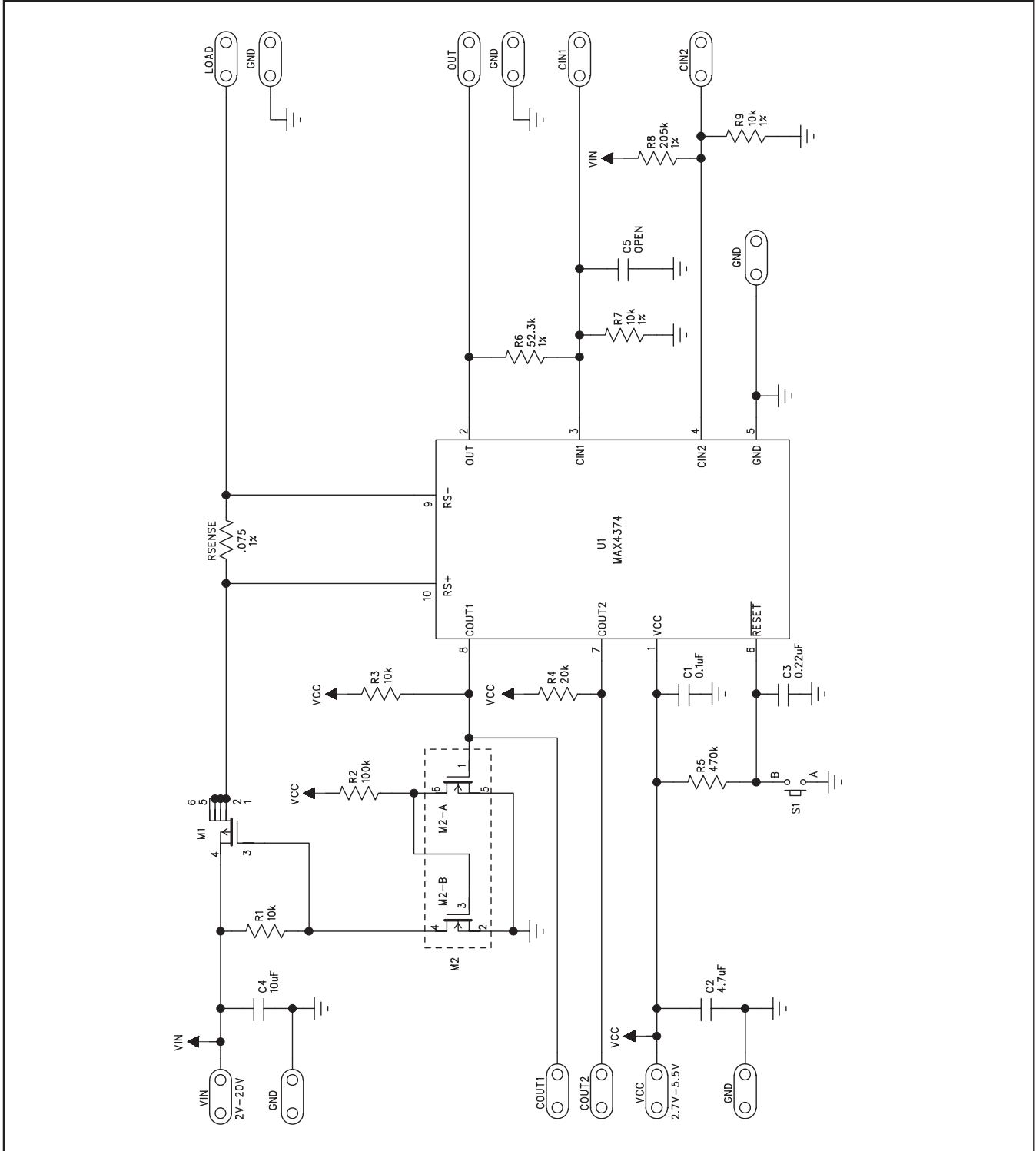


Figure 1. MAX4374 EV Kit Schematic

MAX4374 Evaluation Kit

Evaluates: MAX4374/MAX4375

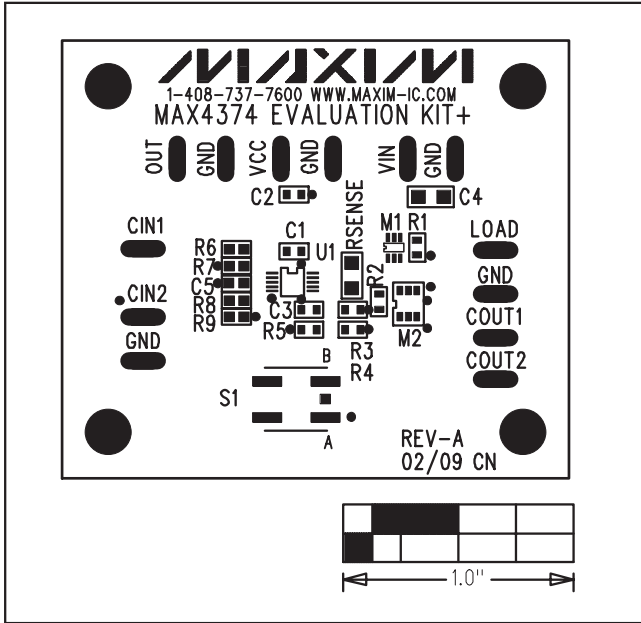


Figure 2. MAX4374 EV Kit Component Placement Guide

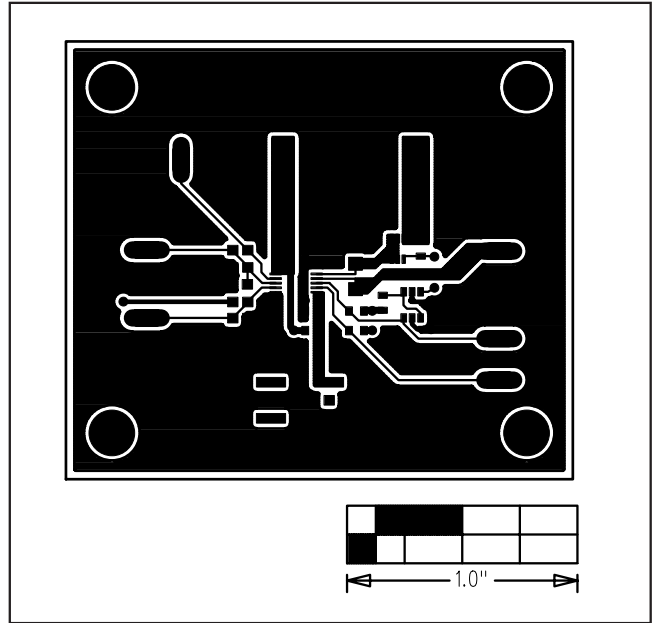


Figure 3. MAX4374 EV Kit PCB Layout—Component Side

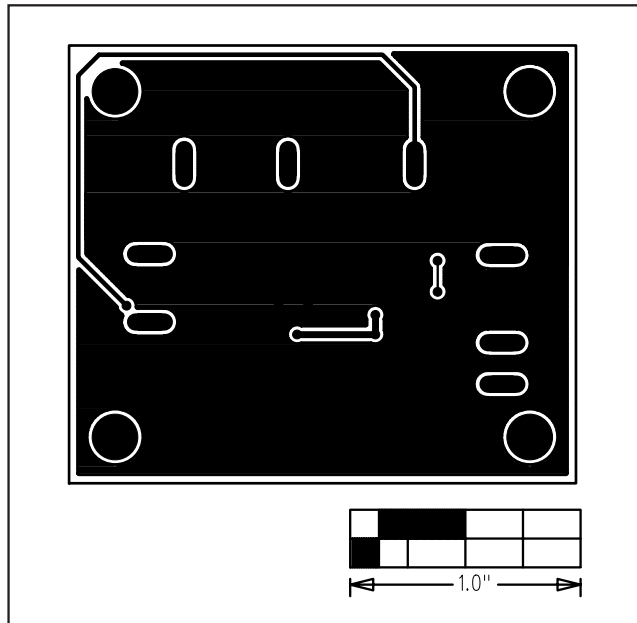


Figure 4. MAX4374 EV Kit PCB Layout—Solder Side

Maxim cannot assume responsibility for use of any circuitry other than circuitry entirely embodied in a Maxim product. No circuit patent licenses are implied. Maxim reserves the right to change the circuitry and specifications without notice at any time.

Maxim Integrated Products, 120 San Gabriel Drive, Sunnyvale, CA 94086 408-737-7600 _____ 5