



Chipsmall Limited consists of a professional team with an average of over 10 year of expertise in the distribution of electronic components. Based in Hongkong, we have already established firm and mutual-benefit business relationships with customers from,Europe,America and south Asia,supplying obsolete and hard-to-find components to meet their specific needs.

With the principle of “Quality Parts,Customers Priority,Honest Operation,and Considerate Service”,our business mainly focus on the distribution of electronic components. Line cards we deal with include Microchip,ALPS,ROHM,Xilinx,Pulse,ON,Everlight and Freescale. Main products comprise IC,Modules,Potentiometer,IC Socket,Relay,Connector.Our parts cover such applications as commercial,industrial, and automotives areas.

We are looking forward to setting up business relationship with you and hope to provide you with the best service and solution. Let us make a better world for our industry!



## Contact us

Tel: +86-755-8981 8866 Fax: +86-755-8427 6832

Email & Skype: info@chipsmall.com Web: www.chipsmall.com

Address: A1208, Overseas Decoration Building, #122 Zhenhua RD., Futian, Shenzhen, China





# 1.2A PWM Step-Down Converter in 2mm x 2mm WLP/UCSP for PA Power

## General Description

The MAX8836Z high-frequency step-down converter is optimized to provide a fixed output voltage with ultra-low dropout. The device integrates a high-efficiency PWM step-down converter for medium- and low-power transmission, and a 60mΩ typical bypass FET for ultra low-dropout operation. A 200mA low-noise, high-PSRR low-dropout regulator (LDO) is also integrated.

Fast-switching allows the use of small ceramic input and output capacitors while maintaining low ripple voltage. The feedback network is integrated, further reducing external component count and total solution size. At high duty cycle, the MAX8836Z automatically switches to the bypass mode, connecting the input to the output through a low-impedance (60mΩ typ) MOSFET. The LDO in the MAX8836Z is designed for low-noise operation (35μVRMS typ). Both the PWM step-down and LDO are individually enabled through separate logic-control interfaces.

The MAX8836Z is available in 16-bump, 2mm x 2mm WLP and UCSP™ packages (0.7mm max height).

## Applications

WCDMA/NCDMA Cellular Handsets  
Wireless PDAs  
Smartphones

## Ordering Information

PART	PIN-PACKAGE	TEMP RANGE
MAX8836ZEWEET	16 WLP (W162B2+1)	-40°C to +85°C
MAX8836ZEREEET	16 UCSP (R162A2+1)	-40°C to +85°C

+Denotes a lead-free/RoHS-compliant package.

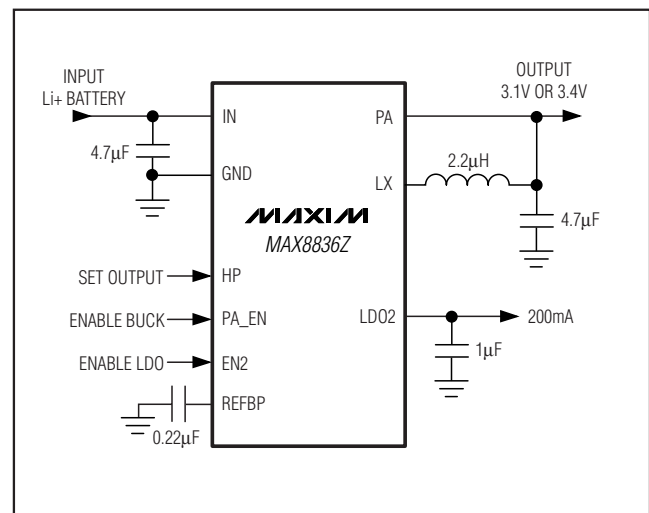
T = Tape and reel.

## Features

- ◆ **PA Step-Down Converter**
  - Selectable Output Voltage (3.1V or 3.4V)
  - 25μs Settling Time for 3.1V to 3.4V<sub>OUT</sub> Change
  - 60mΩ PFET at 100% Duty-Cycle for Low Dropout
  - Low Output Voltage Ripple
  - 1.2A Output Drive Capability
  - ±2% Output Voltage Accuracy
  - Tiny External Components
- ◆ **Low-Noise LDO**
  - Low 35μVRMS (typ) Output Noise
  - High 65dB (typ) PSRR
  - Guaranteed 200mA Output Current Drive Capability
  - ON/OFF Control
- ◆ **Low 0.1μA Shutdown Current**
- ◆ **2.7V to 5.5V Supply Voltage Range**
- ◆ **Thermal Shutdown**
- ◆ **Tiny 2mm x 2mm x 0.7mm WLP and UCSP Packages (4 x 4 Grid)**

MAX8836Z

## Typical Operating Circuit



Pin Configuration appears at end of data sheet.

UCSP is a trademark of Maxim Integrated Products, Inc.



Maxim Integrated Products 1

For pricing, delivery, and ordering information, please contact Maxim Direct at 1-888-629-4642, or visit Maxim's website at [www.maxim-ic.com](http://www.maxim-ic.com).

## 1.2A PWM Step-Down Converter in 2mm x 2mm WLP/UCSP for PA Power

### ABSOLUTE MAXIMUM RATINGS

IN1A, IN1B, IN2, EN2, REFBP to AGND.....-0.3V to +6.0V  
 PAA, PAB, PA\_EN, HP to AGND.....-0.3V to (VIN1A/VIN1B + 0.3V)  
 LDO2 to AGND .....-0.3V to (VIN2 + 0.3V)  
 IN2 to IN1B/IN1A .....-0.3V to +0.3V  
 PGND to AGND .....-0.3V to +0.3V  
 LX Current .....0.7A<sub>RMS</sub>  
 IN1A/IN1B and PAA/PAB Current .....2A<sub>RMS</sub>

PAA and PAB Short Circuit to GND or IN.....Continuous  
 Continuous Power Dissipation (T<sub>A</sub> = +70°C)  
 16-Bump WLP (derate 12.5mW/°C above +70°C).....1W  
 16-Bump UCSP (derate 12.5mW/°C above +70°C) .....1W  
 Junction Temperature.....+150°C  
 Storage Temperature Range .....-65°C to +150°C  
 Bump Temperature (soldering, reflow).....+260°C

**Note:** This device is constructed using a unique set of packaging techniques that impose a limit on the thermal profile the device can be exposed to during board level solder attach and rework. This limit permits only the use of the solder profiles recommended in the industry-standard specification, JEDEC 020A, paragraph 7.6, Table 3 for IR/VPR and Convection reflow. Preheating is required. Hand or wave soldering is not allowed.

Stresses beyond those listed under "Absolute Maximum Ratings" may cause permanent damage to the device. These are stress ratings only, and functional operation of the device at these or any other conditions beyond those indicated in the operational sections of the specifications is not implied. Exposure to absolute maximum rating conditions for extended periods may affect device reliability.

### ELECTRICAL CHARACTERISTICS

(VIN1A = VIN1B = VIN2 = VPA\_EN = VEN2 = 3.6V, VHP = 0V, T<sub>A</sub> = -40°C to +85°C. Typical values are at T<sub>A</sub> = +25°C, unless otherwise noted.) (Note 1)

PARAMETER	CONDITIONS		MIN	TYP	MAX	UNITS
<b>INPUT SUPPLY</b>						
Input Voltage	VIN1A, VIN1B, VIN2		2.7		5.5	V
Input Undervoltage Threshold	VIN1A, VIN1B, VIN2 rising, 180mV typical hysteresis		2.52	2.63	2.70	V
HP, PA_EN, EN2 Pulldown Resistor			400	800	1600	kΩ
Shutdown Supply Current	VPA_EN = VEN2 = 0V	T <sub>A</sub> = +25°C		0.1	4	μA
		T <sub>A</sub> = +85°C		0.1		
No-Load Supply Current	VPA_EN = 0V, ILDO2 = 0A			100	150	μA
	VEN2 = 0V, I <sub>PA</sub> = 0A, switching			3500		
	VEN2 = 0V, I <sub>PA</sub> = 0A, no switching			180		
<b>THERMAL PROTECTION</b>						
Thermal Shutdown	T <sub>A</sub> rising, 20°C typical hysteresis			+160		°C
<b>LOGIC CONTROL</b>						
PA_EN, EN2, HP Logic-Input High Voltage			1.3			V
PA_EN, EN2, HP Logic-Input Low Voltage					0.4	V
Logic-Input Current (PA_EN, EN2, HP)	V <sub>IL</sub> = 0V	T <sub>A</sub> = +25°C		0.01	1	μA
		T <sub>A</sub> = +85°C		0.1		
<b>PA OUTPUT VOLTAGE</b>						
Output Voltage	I <sub>LX</sub> = 0A, VIN1A = VIN1B = VIN2 = 3.9V	HP = 0	3.365	3.434	3.503	V
		HP = 1	3.010	3.065	3.190	
Output Voltage Load Regulation				I <sub>LX</sub> × R <sub>L</sub> /2		V



# 1.2A PWM Step-Down Converter in 2mm x 2mm WLP/UCSP for PA Power

MAX8836Z

## ELECTRICAL CHARACTERISTICS (continued)

( $V_{IN1A} = V_{IN1B} = V_{IN2} = V_{PA\_EN} = V_{EN2} = 3.6V$ ,  $V_{HP} = 0V$ ,  $T_A = -40^{\circ}C$  to  $+85^{\circ}C$ . Typical values are at  $T_A = +25^{\circ}C$ , unless otherwise noted.) (Note 1)

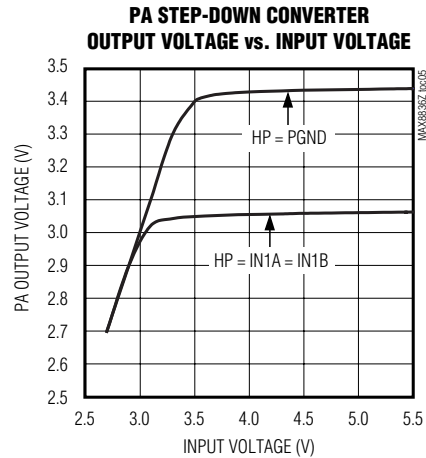
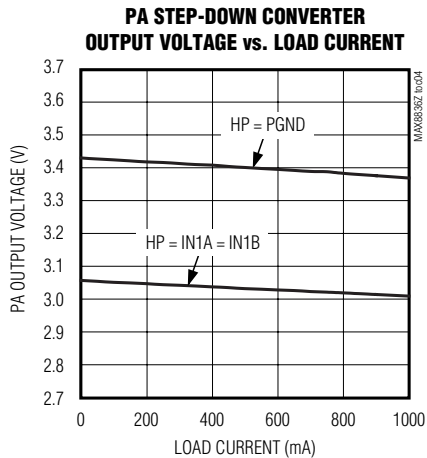
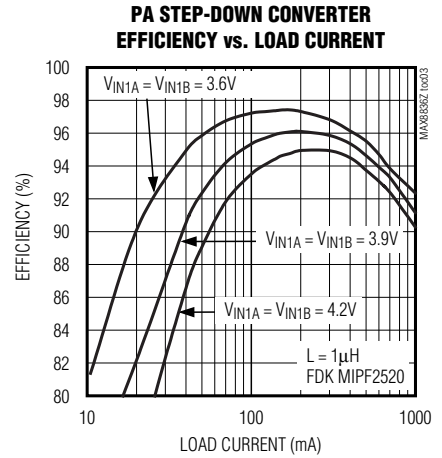
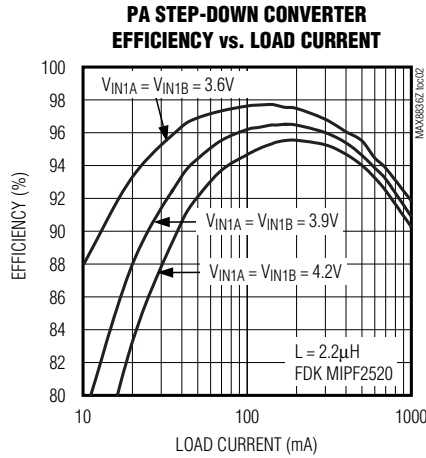
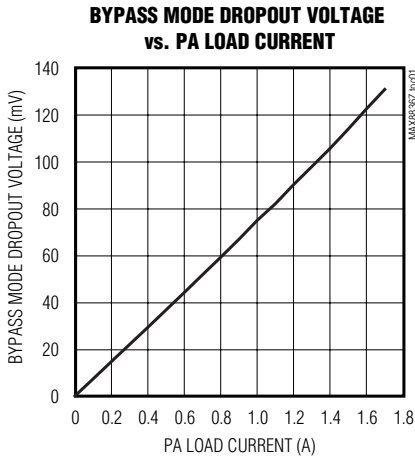
PARAMETER	CONDITIONS	MIN	TYP	MAX	UNITS	
<b>LX</b>						
On-Resistance	p-channel MOSFET switch, $I_{LX} = -40mA$	0.15			$\Omega$	
	n-channel MOSFET rectifier, $I_{LX} = 40mA$	0.15				
LX Leakage Current	$V_{IN1A} = V_{IN1B} = V_{IN2} = 5.5V$ , $V_{LX} = 0V$	$T_A = +25^{\circ}C$	0.1	5	$\mu A$	
		$T_A = +85^{\circ}C$	1			
p-Channel MOSFET Peak Current Limit	$V_{LX} = 0V$	1.3	1.5	1.8	A	
n-Channel MOSFET Valley Current Limit		1.1	1.3	1.6	A	
Minimum On- and Off-Times		0.07			$\mu s$	
Power-Up Delay	From PA_EN rising to LX rising	80			190	$\mu s$
<b>BYPASS</b>						
On-Resistance	p-channel MOSFET bypass, $I_{PA} = -90mA$	$T_A = +25^{\circ}C$	0.060	0.1	$\Omega$	
		$T_A = +85^{\circ}C$	0.1			
Bypass Current Limit	$V_{PA} = 0V$	0.8	1.4	1.8	A	
Total Bypass Current Limit	$V_{LX} = V_{PA} = 0V$	2.1	2.9	3.6	A	
Bypass Threshold	$V_{IN2}$ rising, 150mV hysteresis	0.985 x $V_{PA}$			V/V	
Bypass Off-Leakage Current	$V_{IN1A} = V_{IN1B} = V_{IN2} = 5.5V$ , $V_{PAA} = V_{PAB} = 0V$	$T_A = +25^{\circ}C$	0.01	5	$\mu A$	
		$T_A = +85^{\circ}C$	0.1			
<b>LDO2</b>						
Output Voltage $V_{LDO2}$	$V_{IN2} = 5.5V$ , $I_{LDO2} = 1mA$ ; $V_{IN2} = 3.4V$ , $I_{LDO2} = 1mA$	2.765	2.85	2.936	V	
Output Current		200			mA	
Current Limit	$V_{LDO2} = 0V$	250	550	750	mA	
Dropout Voltage	$I_{LDO2} = 100mA$ , $T_A = +25^{\circ}C$ ( $V_{LDO2} \geq 2.5V$ )	70			mV	
Line Regulation	$V_{IN2}$ stepped from 3.5V to 5.5V, $I_{LDO2} = 100mA$	2.4			mV	
Load Regulation	$I_{LDO2}$ stepped from 50 $\mu A$ to 200mA	25			mV	
Power-Supply Rejection $\Delta V_{LDO2}/\Delta V_{IN2}$	10Hz to 10kHz, $C_{LDO2} = 1\mu F$ , $I_{LDO2} = 30mA$	65			dB	
Output Noise	100Hz to 100kHz, $C_{LDO2} = 1\mu F$ , $I_{LDO2} = 30mA$	35			$\mu V_{RMS}$	
Output Capacitor for Stable Operation	$0 < I_{LDO2} < 10mA$	100			nF	
	$0 < I_{LDO2} < 200mA$	1			$\mu F$	
Shutdown Output Impedance	$V_{EN2} = 0V$	1			k $\Omega$	
<b>REFBP</b>						
REFBP Output Voltage	$0 \leq I_{REFBP} \leq 1\mu A$	1.237	1.250	1.263	V	
REFBP Supply Rejection	$V_{IN2}$ stepped from 2.55V to 5.5V	0.2			5	mV

**Note 1:** All devices are 100% production tested at  $T_A = +25^{\circ}C$ . Limits over the operating temperature range are guaranteed by design.

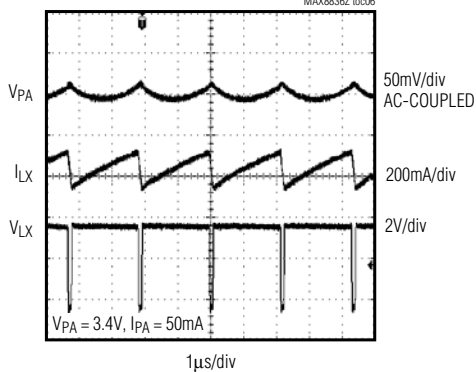
# 1.2A PWM Step-Down Converter in 2mm x 2mm WLP/UCSP for PA Power

## Typical Operating Characteristics

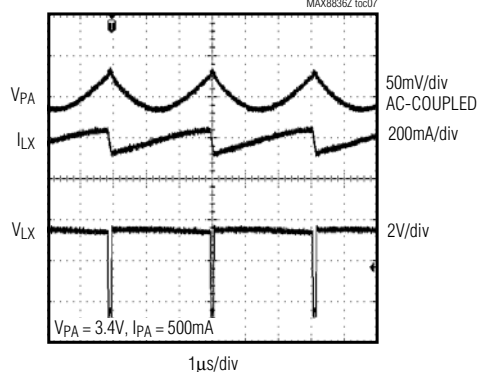
( $V_{IN1A} = V_{IN1B} = V_{IN2} = 3.6V$ ,  $V_{PA} = 3.4V$ ,  $V_{LDO2} = 2.85V$ ,  $R_{PA} = 7.5\Omega$ , circuit of MAX8805WEVKIT,  $T_A = +25^\circ C$ , unless otherwise noted.)



**PA STEP-DOWN CONVERTER LIGHT-LOAD SWITCHING WAVEFORMS**



**PA STEP-DOWN CONVERTER HEAVY-LOAD SWITCHING**



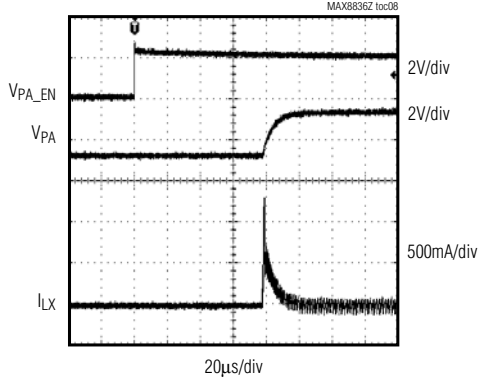
# 1.2A PWM Step-Down Converter in 2mm x 2mm WLP/UCSP for PA Power

## Typical Operating Characteristics (continued)

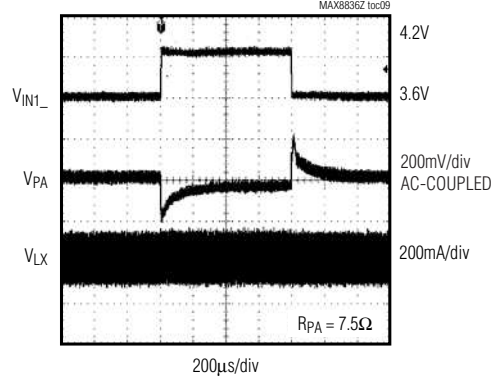
( $V_{IN1A} = V_{IN1B} = V_{IN2} = 3.6V$ ,  $V_{PA} = 3.4V$ ,  $V_{LDO2} = 2.85V$ ,  $R_{PA} = 7.5\Omega$ , circuit of MAX8805WEVKIT,  $T_A = +25^\circ C$ , unless otherwise noted.)

MAX8836Z

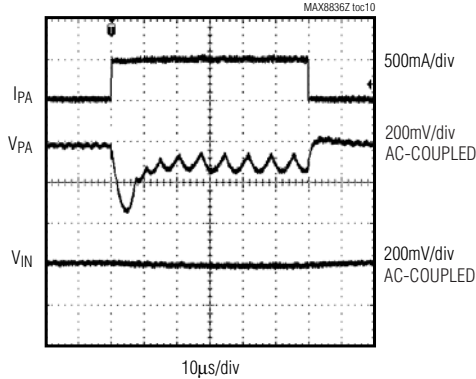
**PA STEP-DOWN CONVERTER  
SOFT-START WAVEFORMS**



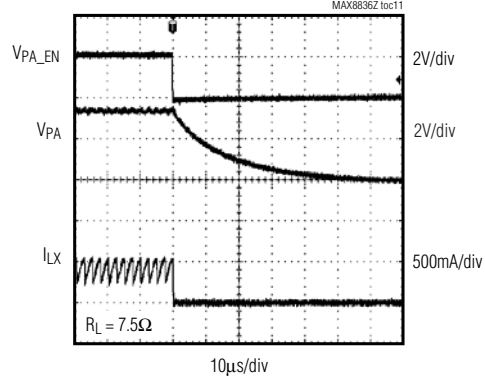
**PA STEP-DOWN CONVERTER  
LINE-TRANSIENT RESPONSE**



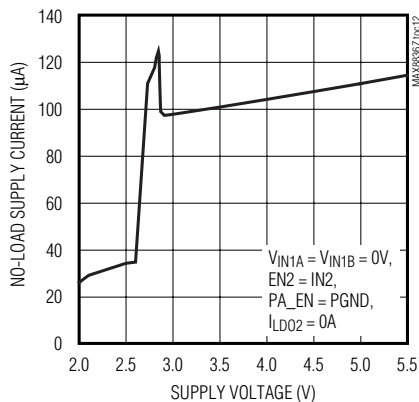
**PA STEP-DOWN CONVERTER  
LOAD-TRANSIENT RESPONSE**



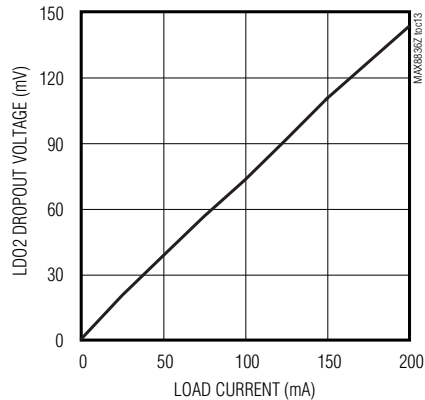
**PA STEP-DOWN CONVERTER  
SHUTDOWN RESPONSE**



**LDO2 SUPPLY CURRENT  
vs. SUPPLY VOLTAGE**



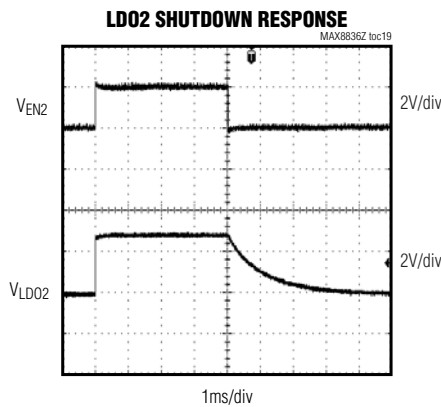
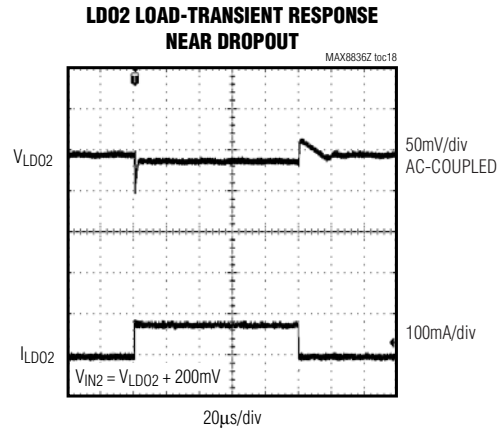
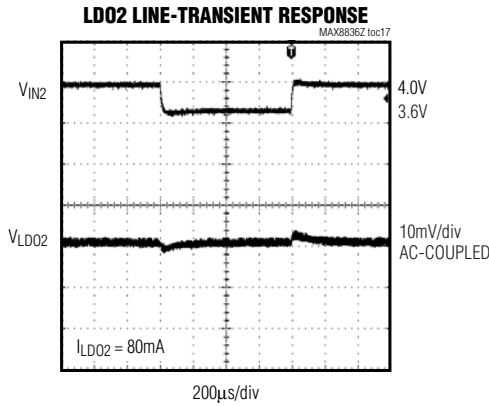
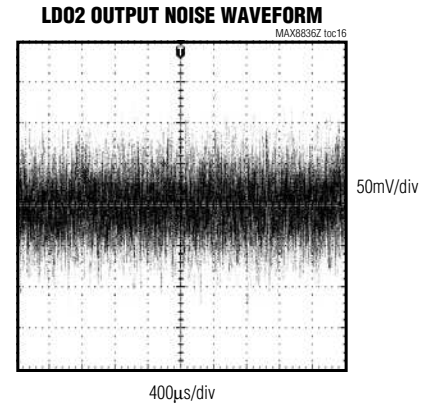
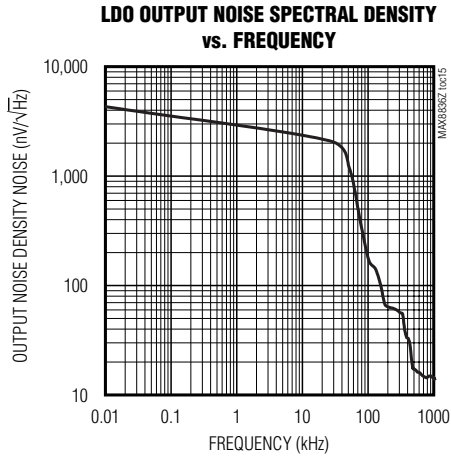
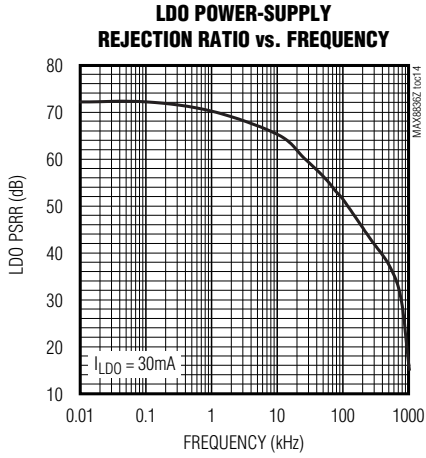
**LDO2 DROPOUT VOLTAGE  
vs. LOAD CURRENT**



# 1.2A PWM Step-Down Converter in 2mm x 2mm WLP/UCSP for PA Power

## Typical Operating Characteristics (continued)

( $V_{IN1A} = V_{IN1B} = V_{IN2} = 3.6V$ ,  $V_{PA} = 3.4V$ ,  $V_{LD02} = 2.85V$ ,  $R_{PA} = 7.5\Omega$ , circuit of MAX8805WEVKIT,  $T_A = +25^\circ C$ , unless otherwise noted.)



# 1.2A PWM Step-Down Converter in 2mm x 2mm WLP/UCSP for PA Power

## Pin Description

PIN	NAME	FUNCTION
A1	REFBP	Reference Noise Bypass. Bypass REFBP to AGND with a 0.22 $\mu$ F ceramic capacitor to reduce noise on the LDO outputs. REFBP is internally pulled down through a 1k $\Omega$ resistor during shutdown.
A2	AGND	Low-Noise Analog Ground. Connect AGND to PGND using a common ground plane. Refer to the MAX8805W Evaluation Kit for more information.
A3	N.I.C.	Not Internally Connected. Connect to AGND for improved thermal performance.
A4	PGND	Power Ground for PA Step-Down Converter. Connect AGND to PGND using a common ground plane. Refer to the MAX8805W Evaluation Kit for more information.
B1	LDO2	200mA LDO Regulator 2 Output. Bypass LDO2 with a 1 $\mu$ F ceramic capacitor as close as possible to LDO2 and AGND. LDO2 is internally pulled down through a 1k $\Omega$ resistor when this regulator is disabled.
B2	PA_EN	PA Step-Down Converter Enable. Active-high enable input. Connect to IN1A/IN1B or logic-high for normal operation. Pulled down to ground through an internal 800k $\Omega$ resistor.
B3	EN2	LDO2 Enable. Active-high enable input. Connect to IN2 or logic-high for normal operation. Pulled down to ground through an internal 800k $\Omega$ resistor.
B4	LX	Inductor Connection. Connect an inductor from LX to the output of the PA step-down converter.
C1	IN2	Supply Voltage Input for LDO2 and Internal Reference. Connect IN2 to a battery or supply voltage from 2.7V to 5.5V. Bypass IN2 with a 2.2 $\mu$ F ceramic capacitor as close as possible to IN2 and AGND. Connect IN2 to the same source as IN1A and IN1B.
C2	HP	PA Output Voltage Select. Pulled down to ground through an internal 800k $\Omega$ resistor.
C3, C4	IN1B, IN1A	Supply Voltage Input for PA Step-Down Converter. Connect IN1_ to a battery or supply voltage from 2.7V to 5.5V. Bypass the connection of IN1_ with a 4.7 $\mu$ F ceramic capacitor as close as possible to IN1_ and PGND. IN1A and IN1B are internally connected together. Connect IN1_ to the same source as IN2.
D1	N.C.	Internally Connected to IN2. Do not connect to this pin.
D2	T.P.	Test Point. This pin is used internally for factory test. This pin must be either externally connected to AGND or unconnected. This pin has an internal 120k $\Omega$ pulldown to AGND.
D3, D4	PAB, PAA	PA Connection for Bypass Mode. Internally connected to IN1_ using the internal bypass MOSFET during bypass mode. PA_ is connected to the internal feedback network. Bypass PA_ with a 4.7 $\mu$ F ceramic capacitor as close as possible to PA_ and PGND.

**MAX8836Z**



# 1.2A PWM Step-Down Converter in 2mm x 2mm WLP/UCSP for PA Power

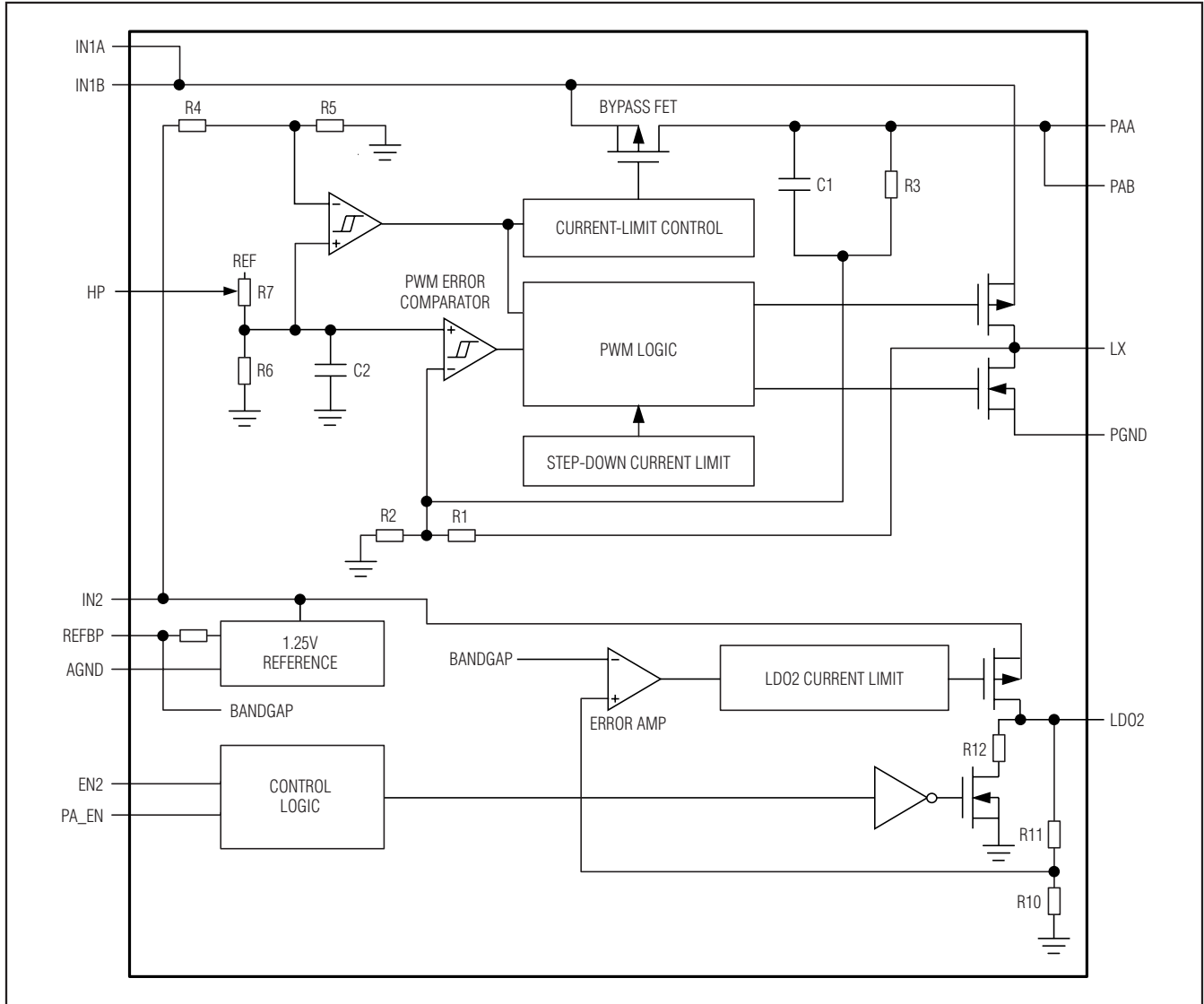


Figure 1. Block Diagram

# 1.2A PWM Step-Down Converter in 2mm x 2mm WLP/UCSP for PA Power

## Detailed Description

The MAX8836Z is designed to provide a fixed output voltage of 3.4V with ultra-low dropout. The device contains a high-frequency, high-efficiency step-down converter, and 200mA low-noise LDO. The step-down converter delivers over 1.2A. The hysteretic PWM control scheme provides extremely fast transient response. A 60mΩ bypass FET connects directly to the battery during high-power transmission.

### Step-Down Converter Control Scheme

A hysteretic PWM control scheme ensures high efficiency, fast switching, fast transient response, low-output ripple, and physically tiny external components. The control scheme is simple: when the output voltage is below the regulation threshold, the error comparator begins a switching cycle by turning on the high-side switch. This high-side switch remains on until the minimum on-time expires and the output voltage is within regulation, or the inductor current is above the current-limit threshold. Once off, the high-side switch remains off until the minimum off-time expires and the output voltage falls again below the regulation threshold. During the off period, the low-side synchronous rectifier turns on and remains on until the high-side switch turns on again. The internal synchronous rectifier eliminates the need for an external Schottky diode.

### Voltage-Positioning Load Regulation

The MAX8836Z step-down converter utilizes a unique feedback network. By taking DC feedback from the LX node through R1 in Figure 1, the usual phase lag due to the output capacitor is removed, making the loop exceedingly stable and allowing the use of very small ceramic output capacitors. To improve the load regulation, resistor R3 is included in the feedback. This configuration yields load regulation equal to half of the inductor's series resistance multiplied by the load current. This voltage-positioning load regulation greatly reduces overshoot during load transients or when changing the output voltage from one level to another.

### Step-Down Converter Bypass Mode

During high-power transmission, the bypass mode connects IN1A and IN1B directly to PAA and PAB with the internal 60mΩ (typ) bypass FET, while the step-down converter is forced into 100% duty-cycle operation. The low on-resistance in this mode provides low dropout, long battery life, and high output current capability.

### Automatic Bypass Mode

Forced bypass mode is automatically invoked when the DC-DC converter operates at more than 99% duty cycle (typ). See Figure 2. Note that IN2 is used instead of IN1 to prevent switching noise from causing false engagement of automatic bypass mode. For this reason, IN2 must be connected to the same source as IN1.

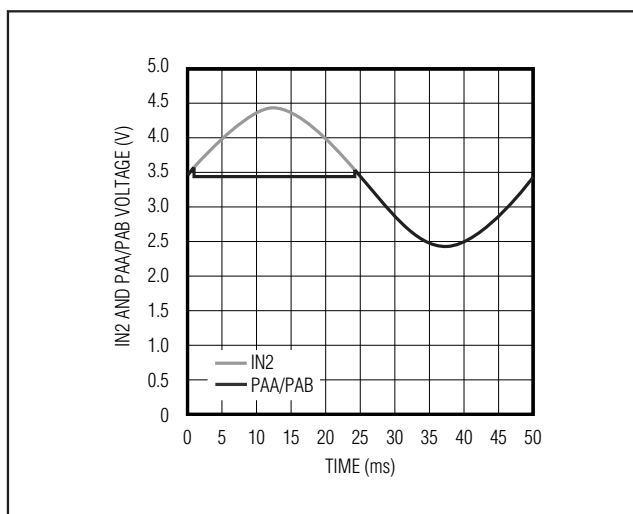


Figure 2.  $V_{IN2}$  and  $V_{PA\_}$  with Automatic Entry/Exit into Bypass Mode

### Shutdown Mode

Connect PA\_EN to GND or logic-low to place the MAX8836Z PA step-down converter in shutdown mode. In shutdown, the control circuitry, internal switching MOSFET, and synchronous rectifier turn off and LX becomes high impedance. Connect PA\_EN to IN1\_ or logic-high for normal operation.

Connect EN2 to GND or logic-low to place LDO2 in shutdown mode. In shutdown, the output of the LDO is pulled to ground through an internal 1kΩ resistor.

When the PA step-down and LDO are in shutdown, the MAX8836Z enters a very low power state, where the input current drops to 0.1μA (typ).

### Step-Down Converter Soft-Start

The MAX8836Z PA step-down converter has internal soft-start circuitry that limits inrush current at startup, reducing transients on the input source. Soft-start is particularly useful for supplies with high output impedance such as Li+ and alkaline cells. See the PA Step-Down Converter Soft-Start Waveforms in the *Typical Operating Characteristics*.

## 1.2A PWM Step-Down Converter in 2mm x 2mm WLP/UCSP for PA Power

### Thermal Shutdown

Thermal shutdown limits total power dissipation in the MAX8836Z. If the junction temperature exceeds +160°C, thermal-shutdown circuitry turns off the IC, allowing it to cool. The IC turns on and begins soft-start after the junction temperature cools by 20°C. This results in a pulsed output during continuous thermal-overload conditions.

### Applications Information

#### Output Voltages

The MAX8836Z provides a fixed output voltage of 3.4V (HP = 0), or BYPASS mode if duty cycle is higher than 99% (typ).

If HP = 1, the MAX8836Z provides a 3.1V fixed output voltage.

The LDO2 output voltage is factory preset to 2.85V.

#### LDO Dropout Voltage

The regulator's minimum input/output differential (or dropout voltage) determines the lowest usable supply voltage. In battery-powered systems, this determines the useful end-of-life battery voltage. Because the MAX8836Z LDO uses a p-channel MOSFET pass transistor, the dropout voltage is a function of drain-to-source on-resistance ( $R_{DS(ON)}$ ) multiplied by the load current (see the *Typical Operating Characteristics*).

#### Inductor Selection

The MAX8836Z operates with a switching frequency of 1.6MHz and utilizes a 2.2μH inductor. The switching frequency of the MAX8836Z results in great efficiency with a physically small inductor. See the *Typical Operating Characteristics* for efficiency graphs.

The inductor's DC current rating only needs to match the maximum load of the application because the MAX8836Z features zero current overshoot during start-up and load transients. For optimum transient response and high efficiency, choose an inductor with DC series resistance in the 50mΩ to 150mΩ range. See Table 1 for suggested inductors and manufacturers.

### Output Capacitor Selection

For the PA step-down converter, the output capacitor ( $C_{PA}$ ) is required to keep the output voltage ripple small and ensure regulation loop stability.  $C_{PA}$  must have low impedance at the switching frequency. Ceramic capacitors with X5R or X7R dielectric are highly recommended due to their small size, low ESR, and small temperature coefficients. Due to the unique feedback network, the output capacitance can be very low. A 4.7μF capacitor is recommended for most applications. For optimum load-transient performance and very low output ripple, the output capacitor value can be increased.

For LDO2, the minimum output capacitance required is dependent on the load currents. For loads less than 10mA, it is sufficient to use a 0.1μF capacitor for stable operation over the full temperature range. With rated maximum load currents, a minimum of 1μF is recommended. Reduce output noise and improve load-transient response, stability, and power-supply rejection by using larger output capacitors.

Note that some ceramic dielectrics exhibit large capacitance and ESR variation with temperature. With dielectrics such as Z5U and Y5V, it is necessary to use 2.2μF or larger to ensure stability at temperatures below -10°C. With X7R or X5R dielectrics, 1μF is sufficient at all operating temperatures. These regulators are optimized for ceramic capacitors. Tantalum capacitors are not recommended.

### Input Capacitor Selection

The input capacitor ( $C_{IN1}$ ) of the PA converter reduces the current peaks drawn from the battery or input power source and reduces switching noise in the MAX8836Z. The impedance of  $C_{IN1}$  at the switching frequency should be kept very low. Ceramic capacitors with X5R or X7R dielectric are highly recommended due to their small size, low ESR, and small temperature coefficients. A 4.7μF capacitor is recommended for most applications. For optimum noise immunity and low input ripple, the input capacitor value can be increased.

# 1.2A PWM Step-Down Converter in 2mm x 2mm WLP/UCSP for PA Power

MAX8836Z

Table 1. Suggested Inductors

MANUFACTURER	SERIES	INDUCTANCE (μH)	ESR (Ω)	CURRENT RATING (mA)	DIMENSIONS (mm)
Coilcraft	LPO3310	1.0	0.07	1600	3.3 x 3.3 x 1.0 = 11mm <sup>3</sup>
		1.5	0.10	1400	
		2.2	0.13	1100	
FDK	MIPF2520	1.0	0.05	1500	2.5 x 2.0 x 1.0 = 5mm <sup>3</sup>
		1.5	0.07	1500	
		2.2	0.08	1300	
	MIPS2520	1.3	0.09	1500	2.5 x 2.0 x 1.0 = 5mm <sup>3</sup>
		2.0	0.11	1200	
	MIPF2016	1.0	0.11	1100	2.0 x 1.6 x 1.0 = 3.2mm <sup>3</sup>
2.2					
Murata	LQH32C_53	1.0	0.06	1000	3.2 x 2.5 x 1.7 = 14mm <sup>3</sup>
		2.2	0.10	790	
Sumida	CDRH2D09	1.2	0.08	590	3.0 x 3.0 x 1.0 = 9mm <sup>3</sup>
		1.5	0.09	520	
		2.2	0.12	440	
Taiyo Yuden	CDRH2D11	1.5	0.05	680	3.2 x 3.2 x 1.2 = 12mm <sup>3</sup>
		2.2	0.08	580	
		3.3	0.10	450	
	CB2518T	2.2	0.09	510	2.5 x 1.8 x 2.0 = 9mm <sup>3</sup>
		4.7	0.13	340	
TOKO	D3010FB	1.0	0.20	1170	3.0 x 3.0 x 1.0 = 9mm <sup>3</sup>
		2.2	0.15	640	
	D2812C	1.2	0.09	860	3.0 x 3.0 x 1.2 = 11mm <sup>3</sup>
		2.2	0.15	640	
	D310F	1.5	0.13	1230	3.6 x 3.6 x 1.0 = 13mm <sup>3</sup>
		2.2	0.17	1080	
	D312C	1.5	0.10	1290	3.6 x 3.6 x 1.2 = 16mm <sup>3</sup>
		2.2	0.12	1140	

For the LDO, use an input capacitance equal to the value of the output capacitance of LDO2. Larger input capacitor values and lower ESR provide better noise rejection and line-transient response.

Note that some ceramic dielectrics exhibit large capacitance and ESR variation with temperature. With dielectrics such as Z5U and Y5V, it may be necessary to use two times the output capacitor value of LDO2 (or larger) to ensure stability at temperatures below -10°C. With X7R or X5R dielectrics, a capacitance equal to the output capacitor value is sufficient at all operating temperatures.

### Thermal Considerations

In most applications, the MAX8836Z does not dissipate much heat due to the high efficiency. However, in applications where the MAX8836Z operates at high ambient temperature with heavy loads, the heat dissipated may exceed the maximum junction temperature of the IC. If the junction temperature reaches approximately +160°C, all power switches are turned off and LX and PA\_ become high impedance, and LDO2 is pulled down to ground through an internal 1kΩ pull-down resistor.



## 1.2A PWM Step-Down Converter in 2mm x 2mm WLP/UCSP for PA Power

The MAX8836Z maximum power dissipation depends on the thermal resistance of the IC package and circuit board, the temperature difference between the die junction and ambient air, and the rate of airflow. The power dissipated in the device is:

$$P_{DISS} = P_{PA} \times (1/\eta_{PA} - 1) + I_{LDO2} \times (V_{IN2} - V_{LDO2})$$

where  $\eta_{PA}$  is the efficiency of the PA step-down converter and  $P_{PA}$  is the output power of the PA step-down converter.

The maximum allowed power dissipation is:

$$P_{MAX} = (T_{JMAX} - T_A)/\theta_{JA}$$

where  $(T_{JMAX} - T_A)$  is the temperature difference between the MAX8836Z die junction and the surrounding air;  $\theta_{JA}$  is the thermal resistance of the junction through the PCB, copper traces, and other materials to the surrounding air.

### PCB Layout

High switching frequencies and relatively large peak currents make the PCB layout a very important part of design. Good design minimizes excessive EMI on the feedback paths and voltage gradients in the ground plane, resulting in a stable and well-regulated output. Connect  $C_{IN1}$  close to IN1A/IN1B and PGND. Connect the inductor and output capacitor as close as possible to the IC and keep their traces short, direct, and wide. Keep noisy traces, such as the LX node, as short as possible. Figure 3 illustrates an example PCB layout and routing scheme. Note that Figure 3 does not show the common ground plane connection of AGND and PGND. Refer to the MAX8805W Evaluation Kit for more information.

## 1.2A PWM Step-Down Converter in 2mm x 2mm WLP/UCSP for PA Power

**MAX8836Z**

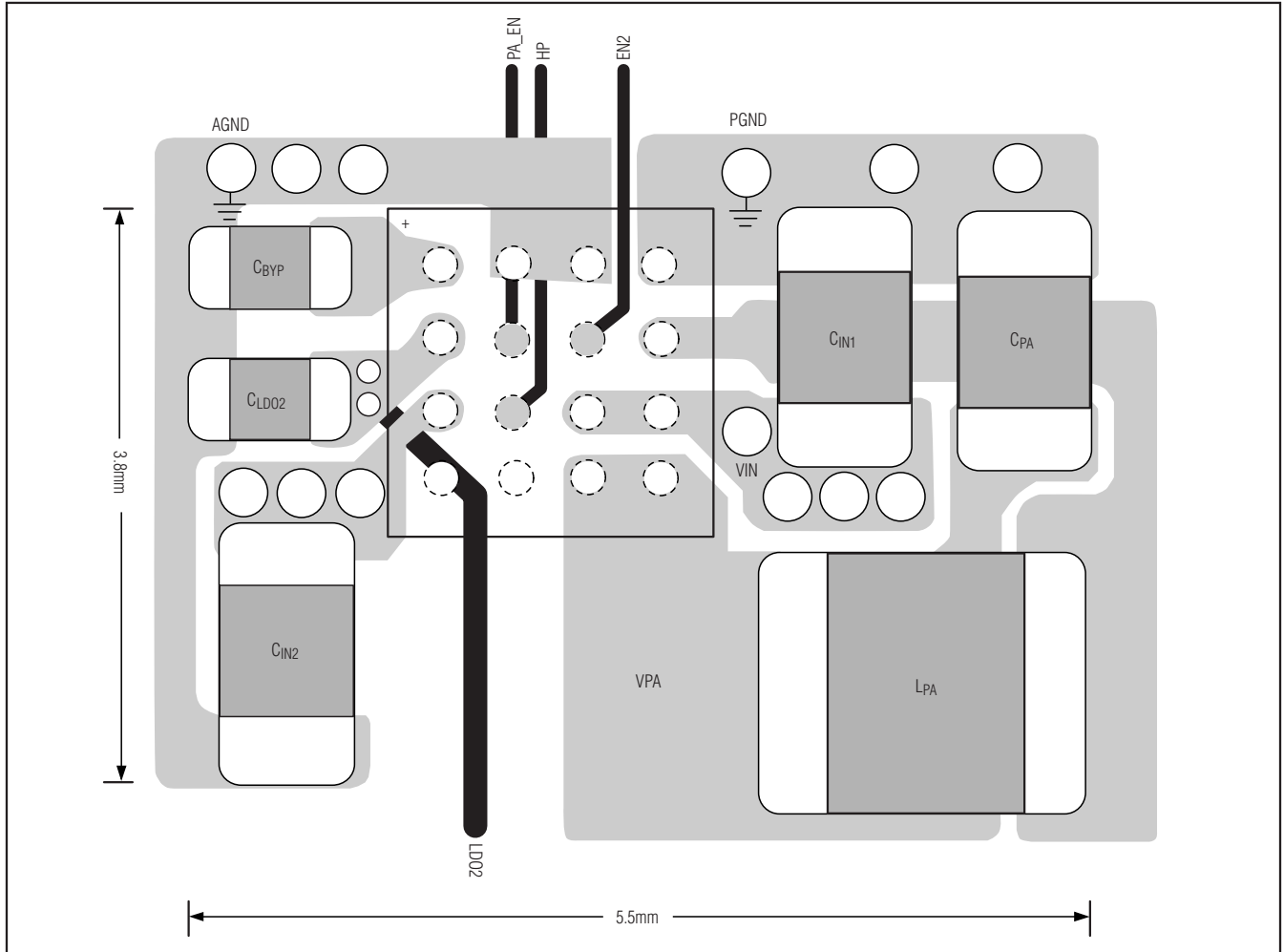


Figure 3. Recommended PCB Layout

# 1.2A PWM Step-Down Converter in 2mm x 2mm WLP/UCSP for PA Power

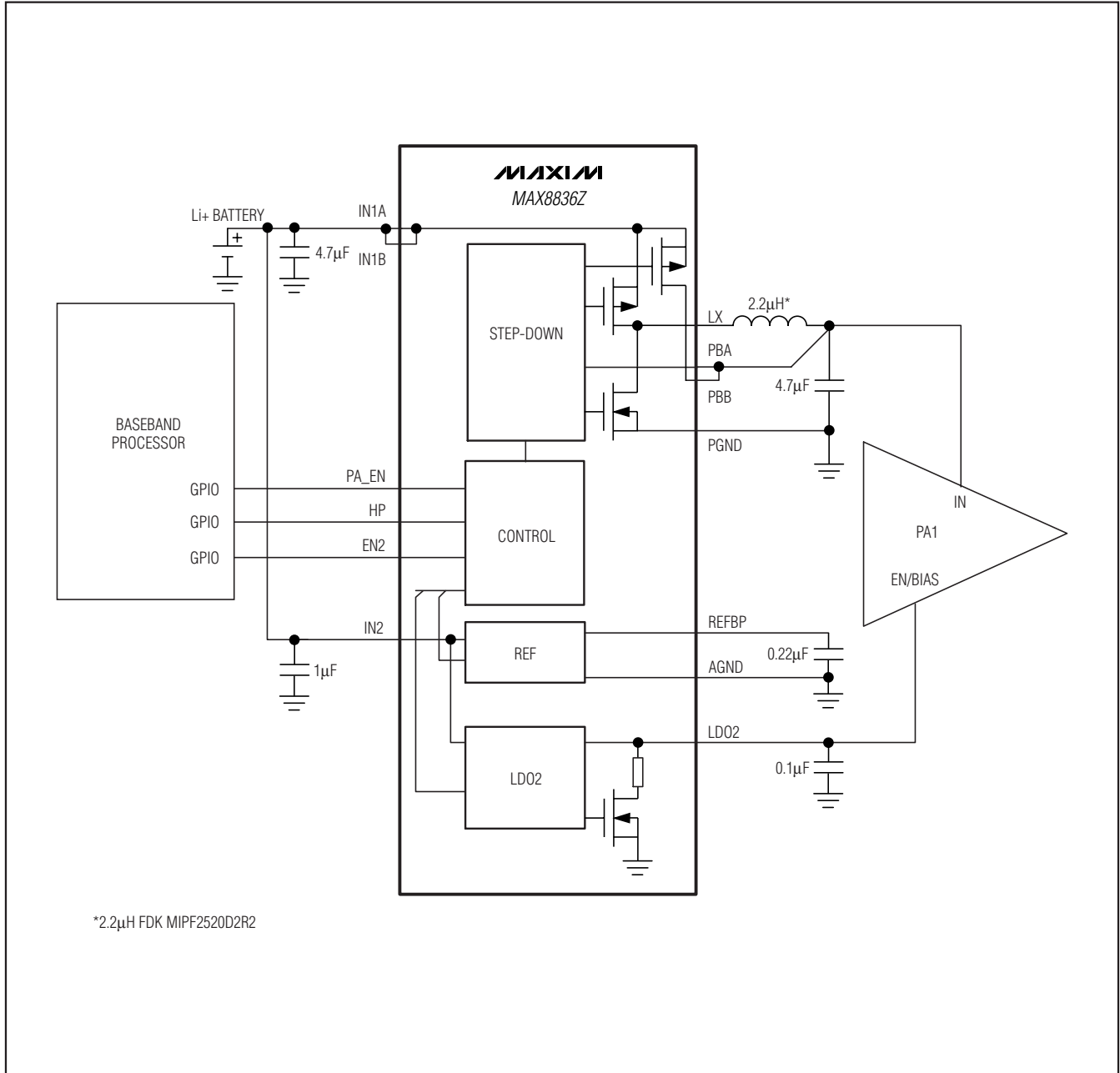


Figure 4. Typical Application Circuit Using LDO for PA Enable/Bias

# 1.2A PWM Step-Down Converter in 2mm x 2mm WLP/UCSP for PA Power

MAX8836Z

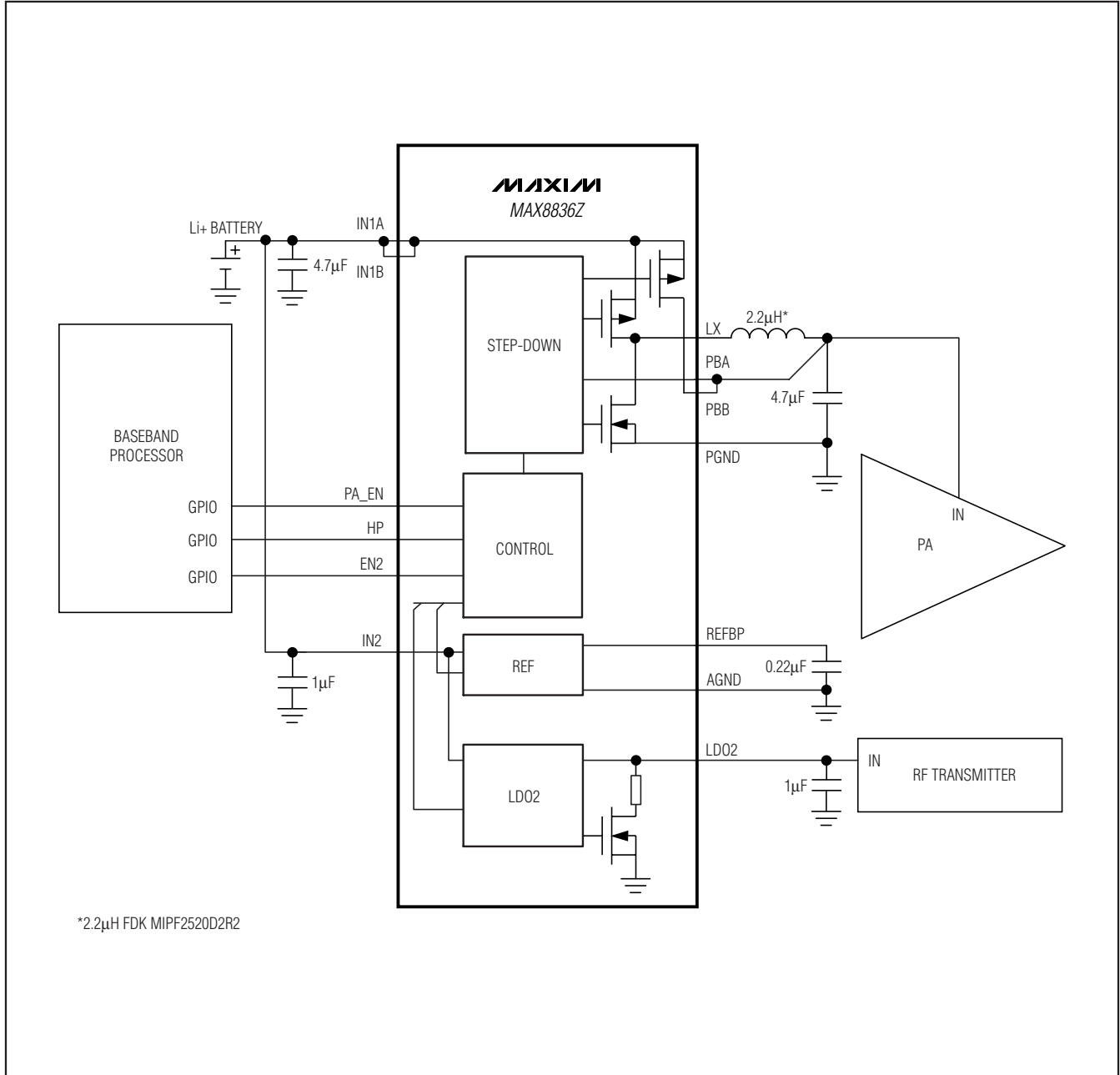


Figure 5. Typical Application Circuit Using LDO for RF Power

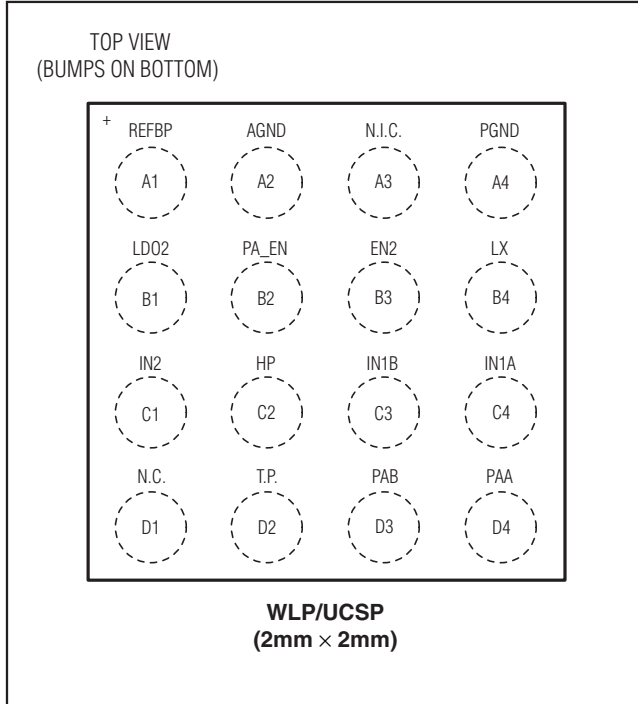


# 1.2A PWM Step-Down Converter in 2mm x 2mm WLP/UCSP for PA Power

## Pin Configuration

## Chip Information

PROCESS: BiCMOS



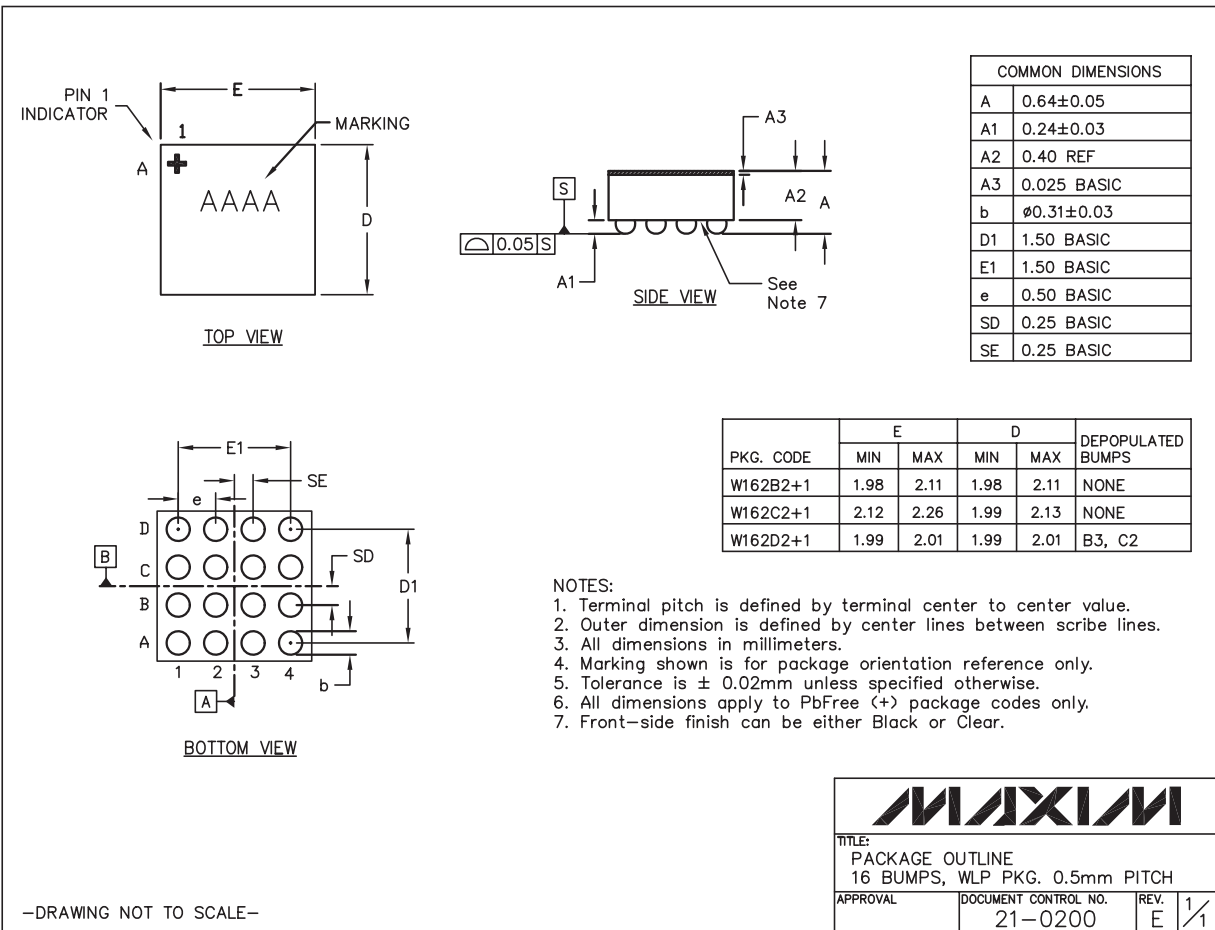
# 1.2A PWM Step-Down Converter in 2mm x 2mm WLP/UCSP for PA Power

## Package Information

For the latest package outline information and land patterns, go to [www.maxim-ic.com/packages](http://www.maxim-ic.com/packages).

MAX8836Z

PACKAGE TYPE	PACKAGE CODE	DOCUMENT NO.
16 UCSP	R162A2+1	<a href="#">21-0226</a>
16 WLP	W162B2+1	<a href="#">21-0200</a>



# 1.2A PWM Step-Down Converter in 2mm x 2mm WLP/UCSP for PA Power

## Package Information (continued)

For the latest package outline information and land patterns, go to [www.maxim-ic.com/packages](http://www.maxim-ic.com/packages).

COMMON DIMENSIONS	
A	0.64±0.05
A1	0.24±0.03
b	∅0.30 REF
D1	1.50 BASIC
E1	1.50 BASIC
e	0.50 BASIC
SD	0.25 BASIC
SE	0.25 BASIC

PKG. CODE	VARIABLE DIMENSIONS				DEPOPULATED BUMPS
	E		D		
	MIN	MAX	MIN	MAX	
R162A2+1	1.98	2.11	1.98	2.11	NONE

UCSP/EP5

NOTES:

1. Terminal pitch is defined by terminal center to center value.
2. Outer dimension (D & E) is defined by center lines between scribe lines.
3. All dimensions in millimeters.
4. Marking shown is for package orientation reference only.
5. Tolerance is ± 0.02mm unless specified otherwise.
6. All dimensions apply to PbFree (+) package codes only.

MAXIM

TITLE:  
PACKAGE OUTLINE  
16 BUMPS, 4x4 ARRAY, UCSP (R) PKG.

APPROVAL	DOCUMENT CONTROL NO. 21-0226	REV. B	1/1
----------	---------------------------------	-----------	-----

-DRAWING NOT TO SCALE-

# 1.2A PWM Step-Down Converter in 2mm x 2mm WLP/UCSP for PA Power

## Revision History

REVISION NUMBER	REVISION DATE	DESCRIPTION	PAGES CHANGED
0	3/08	Initial release	—
1	9/08	Added UCSP package option	1, 2, 16

**MAX8836Z**

Maxim cannot assume responsibility for use of any circuitry other than circuitry entirely embodied in a Maxim product. No circuit patent licenses are implied. Maxim reserves the right to change the circuitry and specifications without notice at any time.

Maxim Integrated Products, 120 San Gabriel Drive, Sunnyvale, CA 94086 408-737-7600 \_\_\_\_\_ 19