

Chipsmall Limited consists of a professional team with an average of over 10 year of expertise in the distribution of electronic components. Based in Hongkong, we have already established firm and mutual-benefit business relationships with customers from,Europe,America and south Asia,supplying obsolete and hard-to-find components to meet their specific needs.

With the principle of “Quality Parts,Customers Priority,Honest Operation,and Considerate Service”,our business mainly focus on the distribution of electronic components. Line cards we deal with include Microchip,ALPS,ROHM,Xilinx,Pulse,ON,Everlight and Freescale. Main products comprise IC,Modules,Potentiometer,IC Socket,Relay,Connector.Our parts cover such applications as commercial,industrial, and automotives areas.

We are looking forward to setting up business relationship with you and hope to provide you with the best service and solution. Let us make a better world for our industry!



Contact us


Tel: +86-755-8981 8866 Fax: +86-755-8427 6832

Email & Skype: info@chipsmall.com Web: www.chipsmall.com

Address: A1208, Overseas Decoration Building, #122 Zhenhua RD., Futian, Shenzhen, China

System Board 6147

MAXREFDES73#: WEARABLE, GALVANIC SKIN RESPONSE SYSTEM

 Active: In Production.

Overview

The MAXREFDES73# reference design is a wearable, mobile galvanic skin response (GSR) system featuring the MAX32600 wellness measurement microcontroller. This battery-powered platform takes high-precision AC impedance measurements while consuming minimal power. The MAX32600 microcontroller features the industry-standard ARM® Cortex®-M3 32-bit RISC CPU that operates at up to 24MHz, while integrating multiple high-performance analog peripherals. Analog features include a 16-bit ADC with PGA, two 12-bit DACs, and a 16-channel multiplexer along with classic digital features such as 256KB of flash memory, 32KB of SRAM, and a 2KB instruction cache. The reference design provides a high-performance and flexible development platform, which is a foundation for many fitness and medical measurement applications, especially galvanic skin response measurement. The reference design arrives as a wrist-worn unit, powered by a LIR2032 rechargeable coin battery. A mobile application program for devices for Android™ provides the interface, and is free for download. The device communicates with a device for Android through a Bluetooth® low-energy wireless interface. Test results, hardware files, and firmware source code provide complete documentation for the design. The complete wrist-worn unit is available for purchase.

Features

- High precision
- Integrated AFE
- Low power consumption
- Compact and low cost

Competitive Advantages

- Single-chip AC impedance measurement
- Wireless communication with mobile device
- Portable, compact, and cost effective

Applications

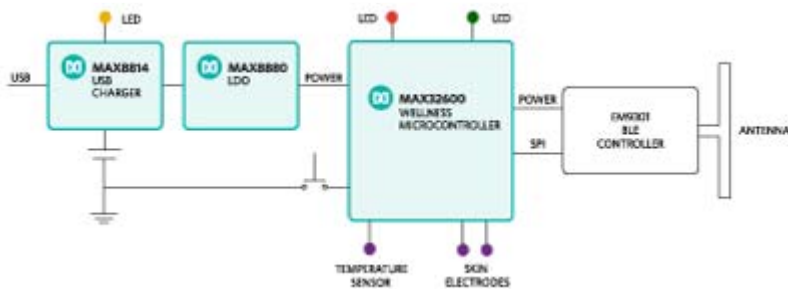
- AC impedance measurement
- GSR measurement

MAXREFDES73# System



Enlarge+

MAXREFDES73# Reference Design Block Diagram



Enlarge+

Related Resources

Details

Introduction

GSR measurement detects human skin impedance under different situations. A variety of events affect the skin impedance of a human body, such as changes with the ambient environment, stress from a sudden event, and sweating from physical exercises. GSR devices can be used in medical treatment, lie detection, and wellness monitoring. The MAXREFDES73# reference design is a wrist-worn GSR measurement device that monitors both skin impedance and temperature on a user's wrist. With a mobile device for Android, a user can monitor his or her skin resistance and temperature within 20m through the Bluetooth low-energy (BLE) wireless interface.

The MAX32600 microcontroller is the center of the GSR device. The MAX32600 integrates all the analog front-end and other peripherals required for impedance measurements, including one 16-bit ADC with input MUX and PGA, two 12-bit DACs and two 8-bit DACs, 4 operational amplifiers (OP AMP), 4 uncommitted SPST analog switches, and internal voltage references.

The MAXREFDES73# reference design (**Figure 1**) demonstrates the typical use of a GSR device. The developer or user can reconfigure the device through minimal firmware or hardware changes to customize it for other specific applications. Please note, the impedance and temperature are not calibrated. The design serves as a flexible high-performance, low-cost platform for developing customized wearable devices.

System Diagram

MAXREFDES73# System



Enlarge+

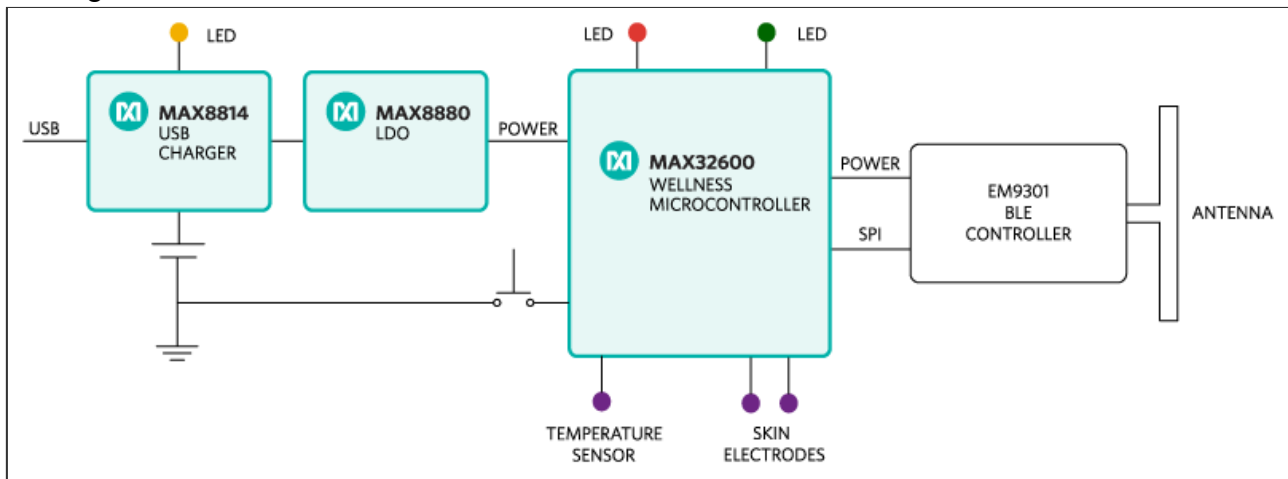


Figure 1. The MAXREFDES79# reference design block diagram.

Detailed System Description

AC Impedance Measurement – Theory of Operation

A block diagram of the AC impedance measurement is illustrated in **Figure 2**.

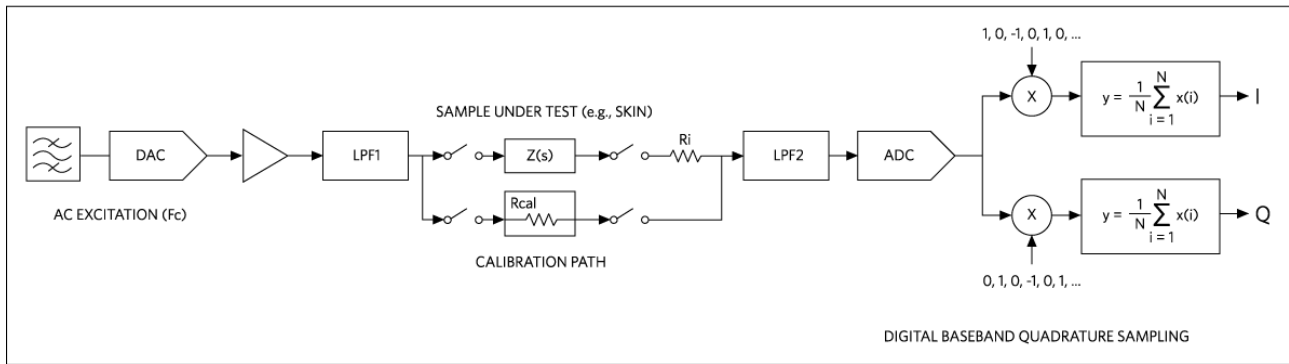


Figure 2. MAXREFDES73# AC impedance measurement block diagram.

The sample under test (e.g., wrist skin) is used as a part of the input impedance of an inverting amplifier. The circuit is stimulated with a coherent sinusoidal input. The response of the circuit is coherently detected with a digital baseband quadrature sampling receiver to detect the amplitude and phase of the network response. A known calibration path is also measured. From these two responses, the complex impedance of the sample under test can be determined.

From the ratio of the responses of the test load to the calibration path, the complex impedance can be accurately determined from a low power observation. To determine the response of each path, a minimum of two ADC samples is required.

To measure the impedance at a desired frequency (F_c), a sinusoidal voltage is applied to the test load:

$$x(t) = \cos(2\pi \times F_c \times t)$$

The output, observed at the ADC, is a scaled and phase shifted version of the input:

$$y(t) = V_L \times \cos(2\pi F_c \times t + \theta)$$

To extract the phase of the received signal, coherent detection is required. Digital baseband quadrature sampling can easily be implemented if the ADC sampling can be synchronized with the DAC output (AC excitation). The key feature of this solution is that the ADC sample rate is 4 times the excitation frequency, as illustrated in **Figure 3**.

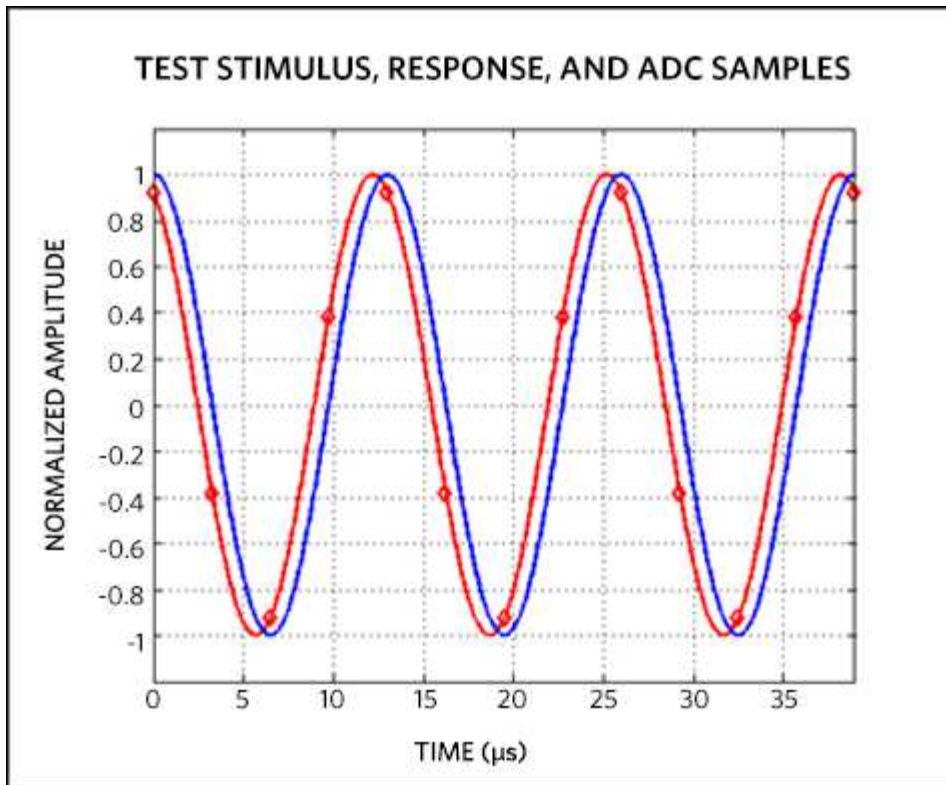


Figure 3. MAXREFDES73# ADC quadrature sampling.

Digital baseband quadrature sampling is typically illustrated in the frequency domain; however, for the AC impedance measurements, the time domain is more applicable. The following equations illustrates the processing from $y(t)$ to real component I and complex component Q.

$$y(t) = V_L \times \cos(2\pi F_c \times t + \theta)$$

$$T_s = 1/(4 \times F_c)$$

$$y(k) = V_L \times \cos(\pi/2 \times k + \theta)$$

$$k \in \{0, 1, 2, \dots, N - 1\}$$

$$y(k) = V_L[\cos\theta, \cos(\pi/2 + \theta), \cos(\pi + \theta), \cos(3\pi/2 + \theta), \dots]$$

$$y(k) = V_L[\cos\theta, -\sin\theta, -\cos\theta, \sin\theta, \dots]$$

To calculate the complex impedance, we are interested in extracting the magnitude and phase information:

$$V_L e^{j\theta} = V_L \cos(\theta) + jV_L \sin(\theta) = I + jQ$$

By observation, the first 2 ADC samples yield I and Q:

$$I = V_L \cos(\theta) = y(0)$$

$$Q = V_L \sin(\theta) = y(1)$$

We can split the ADC samples (even/odd) and modulate by ± 1 to generate multiple observations of the real component I and the complex component Q . Because we are processing a single frequency, we can average these outputs to increase the SNR (signal-to-noise ratio) of the measurements, as illustrated below:

$$I = \frac{2}{N} \sum_{i=0}^{\frac{N}{2}-1} y(2i)(-1)^i$$

$$Q = \frac{2}{N} \sum_{i=0}^{\frac{N}{2}-1} y(2i+1)(-1)^{i+1}$$

Where N is the number of ADC samples, it is a multiple of 4.

$$\text{Phase} = \theta = \text{atan2}(Q, I)$$

$$\text{Magnitude} = V_L = \sqrt{I^2 + Q^2}$$

The load complex impedance ($Z(s)$) is measured with the calibration load ($Y_{\text{cal}}(s)$) and with the sample under test load ($Y_{\text{sys}}(s)$) at a frequency of interest. Based on the ratio of the responses and the two external resistors, R_i and R_{cal} (see Figure 2), the load complex impedance can be observed at the test frequency:

$$(R_i + Z(s))/R_{\text{cal}} = Y_{\text{cal}}(s)/Y_{\text{sys}}(s)$$

The load impedance magnitude and phase can be derived:

$$Z(s)_{\text{magnitude}} = R_{\text{cal}} \times (Y_{\text{cal}}(s)_{\text{magnitude}}/Y_{\text{sys}}(s)_{\text{magnitude}}) - R_i$$

$$Z(s)_{\text{phase}} = Y_{\text{cal}}(s)_{\text{phase}} - Y_{\text{sys}}(s)_{\text{phase}}$$

For this reference design, we are more interested in the magnitude of the skin impedance, so only the magnitude data are transmitted and displayed on the mobile application's graphic user interface. In the reference design firmware, the phase data are also computed for users to use in their specific applications.

Hardware Description

The MAXREFDES73# reference design system block diagram is shown in Figure 1. Also

refer the schematic for circuit details.

MAX32600 Wellness Measurement Microcontroller

The MAX32600 lies at the center of the system. The MAX32600 microcontroller is based on the industry-standard ARM Cortex-M3 32-bit RISC CPU operating at up to 24MHz. It includes 256KB of flash memory, 32KB of SRAM, a 2KB instruction cache, and integrated high-performance analog peripherals.

The MAX32600 comes in 192-ball, 12mm x 12mm CTBGA and 120-ball, 7mm x 7mm CTBGA and 108-ball WLP packages. This design uses the 7mm x 7mm CTBGA package.

The MAX32600's integrated AFE enables precision wellness measurement with minimal discrete components. The microcontroller includes the following integrated analog features that satisfy the needs of most wellness measurement devices:

- 16-bit ADC with input MUX and PGA
 - Up to 500ksps conversion rate
 - PGA with gain of 1, 2, 4, and 8 and bypass mode
 - Differential 8:1 or single-ended 16:1 input MUX
 - Internal MUX inputs for measuring VDDA3
- Internal or external voltage reference
 - Programmable buffers for ADC and DACs
- Two 12-bit DACs and two 8-bit DACs
- Four operational amplifiers
- Four low-power comparators
- Four uncommitted SPST analog switches
- Four ground switches
- Up to eight 100mA LED driver pairs (sink)
- Internal temperature sensor

In this GSR unit design, only several ceramic capacitors and resistors are required, making the design compact and cost effective.

Power Supply and the MAX8814 Linear Li+ Battery Charger

The MAXREFDES73# is powered by a lithium-ion rechargeable battery, the LIR2032. The battery has a nominal voltage of 3.6V and maximum capacity of 45mAH. The battery is regulated by the MAX8880 ultra-low IQ, low-dropout linear regulator.

The battery can be conveniently charged by a USB connection to a PC. The charging controller MAX8814 is an intelligent, stand-alone constant-current, constant-voltage (CCCV), thermally regulated linear charger. It is designed for charging a single-cell lithium-

ion (Li+) battery. The MAX8814 integrates the current-sense circuit, MOSFET pass element, thermal-regulation circuitry, and eliminates the reverse-blocking Schottky diode to create the simplest and smallest charging solution for handheld equipment.

The MAX8814 controls the charging sequence from the prequalification state through constant-current fast-charge and the final constant-voltage charge. Proprietary thermal-regulation circuitry limits the die temperature during fast-charging or when the IC is exposed to high ambient temperatures, allowing maximum charging current without damaging the IC.

The MAX8814 achieves high flexibility by providing an adjustable fast-charge current through an external resistor. The fast-charge current is set to 32mA. For a fully discharged battery, the GSR device can be fully charged in less than two hours.

A fully charged battery can last about 15 hours with the default firmware settings. In the default settings, the device measures the skin impedance and temperature every 1s, and transmits the data to a mobile device through BLE wireless interface.

When the device is being charged, the yellow LED D3 turns on and the charging indication icon on the mobile app is also turned on.

AC Impedance Measurement Circuit and Settings

The AC impedance measurement block diagram is shown in Figure 2.

Referring to the schematic, the 12-bit DAC0 generates the excitation sinusoidal signal with a 1V peak-to-peak magnitude. The microcontroller DMA engine makes the direct digital synthesis possible. The DAC0 output signal is buffered by OP AMP D. R17, R18, C25, C26, and OP AMP A construct a second-order lowpass filter (LPF). C27 blocks the DC component of the excitation signal. Four internal SPST switches dynamically reconfigure the load to either the calibration path or human skin load. The 8-bit DAC2 generates the common-mode bias before ADC input. C29 and R25 construct a first-order LPF and gain control. Finally, R41, R42, and C47 work as a LPF before ADC input.

The MAXREFDES73# sets the default excitation frequency at 7.8125kHz. The hardware settings for this single fixed-frequency measurement are as follows:

- Both ADC and DAC voltage references = 2.048V
- DAC0 power level = 2, sine wave output frequency = 7.8125kHz, voltage = 1V peak-to-peak
- DAC2 DC output voltage = 1.12V
- ADC sample rate = 31.25kHz, decimation = 4, PGA gain = 2
- Clock source: 24MHz internal relaxation oscillator

The MAXREFDES73# also provides a frequency sweeping function for users' reference. The device measures the skin impedances using excitation frequencies from 100Hz up to 15.625kHz. After the measurement is done, the device transmits the data to the mobile device in a batch.

The hardware settings for frequency sweeping are the same as above settings except that the following DAC0 sine wave output frequency and ADC sample rate pairs are different:

- When DAC0 output frequency = 100Hz, ADC sample rate = 400Hz
- When DAC0 output frequency = 200Hz, ADC sample rate = 800Hz
- When DAC0 output frequency = 500Hz, ADC sample rate = 2000Hz
- When DAC0 output frequency = 1kHz, ADC sample rate = 4kHz
- When DAC0 output frequency = 1.953125kHz, ADC sample rate = 7.8125kHz
- When DAC0 output frequency = 5kHz, ADC sample rate = 20kHz
- When DAC0 output frequency = 7.8125kHz, ADC sample rate = 31.25kHz
- When DAC0 output frequency = 12.5kHz, ADC sample rate = 50kHz
- When DAC0 output frequency = 15.625kHz, ADC sample rate = 62.5kHz

For each measurement: 184 ADC samples are collected (46 sine wave cycles), 160 samples are used in averaging (40 sine wave cycles), the first 6 cycles are discarded.

Temperature Measurement

The MAX32600 microcontroller includes an internal temperature sensor that can be read using the ADC, and additionally supports a mode for an external temperature sensor, which is connected to the same ADC input pair. Because the GSR device needs a temperature sensor that can directly touch the user's skin, an external negative temperature coefficient (NTC) sensor is used.

The MAXREFDES73# connects the NTC temperature sensor to MAX32600 AN1+ pin. The current sourced onto MAX32600 AN1+ pin is programmable at 4 μ A, 60 μ A, 64 μ A, and 120 μ A respectively. The GSR device uses an NTC temperature sensor with nominal resistance of 30.15k Ω at 37°C. The sensor's Steinhart–Hart parameters are:

$$a = 824.970719, b = 222.454876, c = 0.095600.$$

So, the current sourced onto AN1+ is set to 4 μ A (AinCurrentSel = 00).

With the ADC PGA set to 2, if the ADC code is CODE, the voltage drop on the sensor is given by

$$V_{NTC} = CODE \times 2.048 / (65535 \times 2) (V)$$

The resistance of the NTC sensor is given by

$$R_{NTC} = V_{NTC}/I = \text{CODE} \times 2.048/(65535 \times 2 \times 0.000004)(\Omega)$$

Based on third-order approximation of Steinhart–Hart equation, the temperature is given by

$$T = 1/(a + b \times \ln(R_{NTC}) + c \times (\ln(R_{NTC}))^3) \text{ (Kelvin)}$$

Bluetooth Low-Energy Controller

The MAXREFDES73# reference design provides a free companion mobile app that runs on a mobile device for Android. The GSR device communicates with the device for Android through BLE wireless connection. The BLE controller is EM9301 from EM Microelectronic. The MAX32600 microcontroller controls the BLE chip through an SPI interface. The MAX32600 internal LDO output VDDIO provides power for the BLE chip. Refer the EM9301 datasheet for details.

Firmware Description

The MAXREFDES73# firmware is based on an interrupt-driven design model. After power-up, the microcontroller configures the power domains, clock domains, DAC settings, ADC settings, other analog peripherals, GPIO pins, SPI controller, and BLE controller hardware and software stack. Then the device keeps sending BLE advertisement packets before a connection is set up. If a BLE connection cannot be established within 30s, the device switches to a sleep mode until the reset button is pressed. The green LED D2 indicates the advertisement is happening.

After a connection is established, the device starts the impedance and temperature measurement every 1s, and pushes the calculated data to the host. The red LED D1 indicates the measurement is happening. During the 1s interval, the measurement and transmitting time is about 30ms, the microcontroller is put in LP2 mode to save energy in the rest of the 1s period.

If the user requests a frequency sweeping from the mobile app, the device switches to the sweeping mode, measuring the load impedance at different excitation frequencies, transmits the results to the host, and finally switches back to the continuous, single excitation frequency measurement mode.

The firmware is developed using the ARM Cortex Toolchain for Maxim Integrated Medical Microcontrollers package.

Figure 4 shows the MAXREFDES73# firmware main function flowchart.

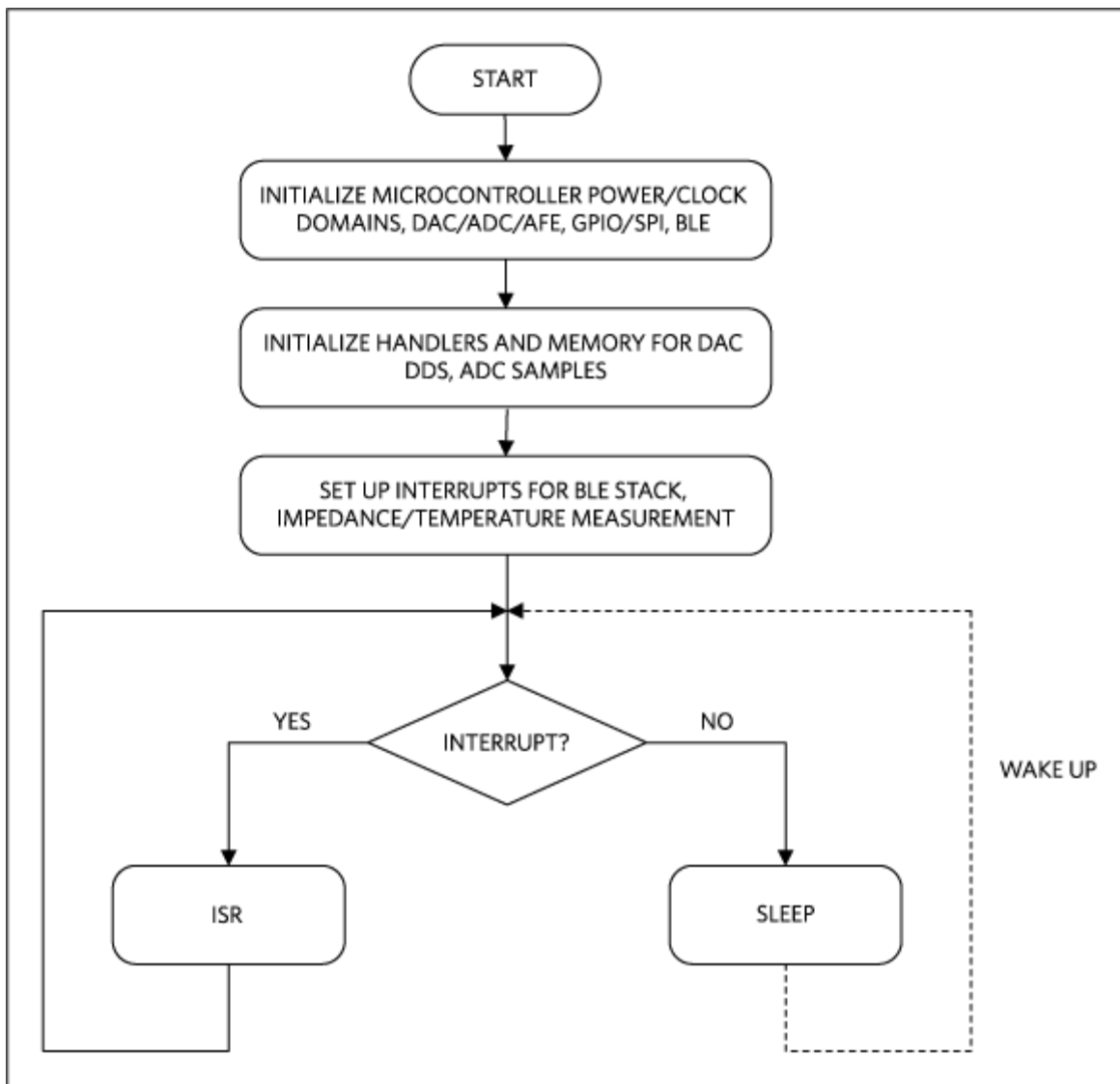


Figure 4. MAXREFDES73# firmware main function flowchart.

Figure 5 shows the flowchart of the interrupt service routine (ISR) for the impedance and temperature measurement.

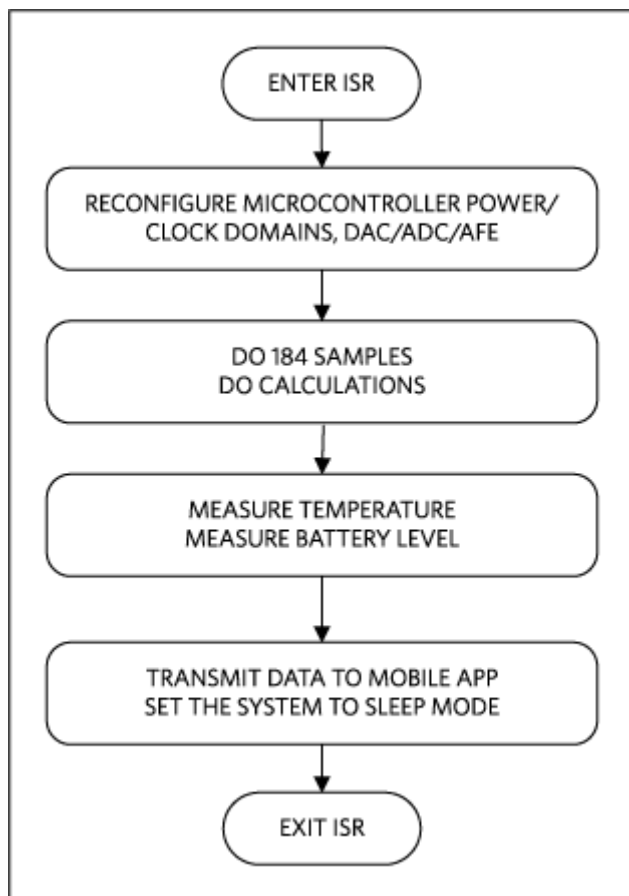


Figure 5. MAXREFDES73# firmware interrupt service routine flowchart.

Quick Start

Required Equipment:

Purchased from Maxim:

- MAXREFDES73# reference design (GSR wrist-worn device)

User supplied:

- A tablet or smart phone device for Android

Follow the ensuing procedure to verify the correct functioning of the MAXREFDES73#.

Procedure

1. Go to the Google Play store to download the latest version of the MAXREFDES73# mobile app. In the Google Play search box, type MAXREFDES73. **The app requires Android 4.3 or later.**
2. Start the MAXREFDES73# mobile app.
3. Wear the MAXREFDES73# device on a wrist. Make sure the electrodes firmly touch the wrist skin. Alternatively, use a 10kΩ resistor to connect the electrodes.
4. On the device, press the pushbutton, the green LED turns on.

5. On the mobile app, when the BLE advertisement is detected, tap the device found.
6. The mobile app displays the temperature and impedance magnitude. Refreshing every 1s.
7. Verify that the red LED on the device flashes shortly every 1s.
8. Tap **Frequency Sweep** icon on the mobile app. About 5s later, the Bode plot is updated with the latest data from the device. A screenshot is shown in **Figure 6**.

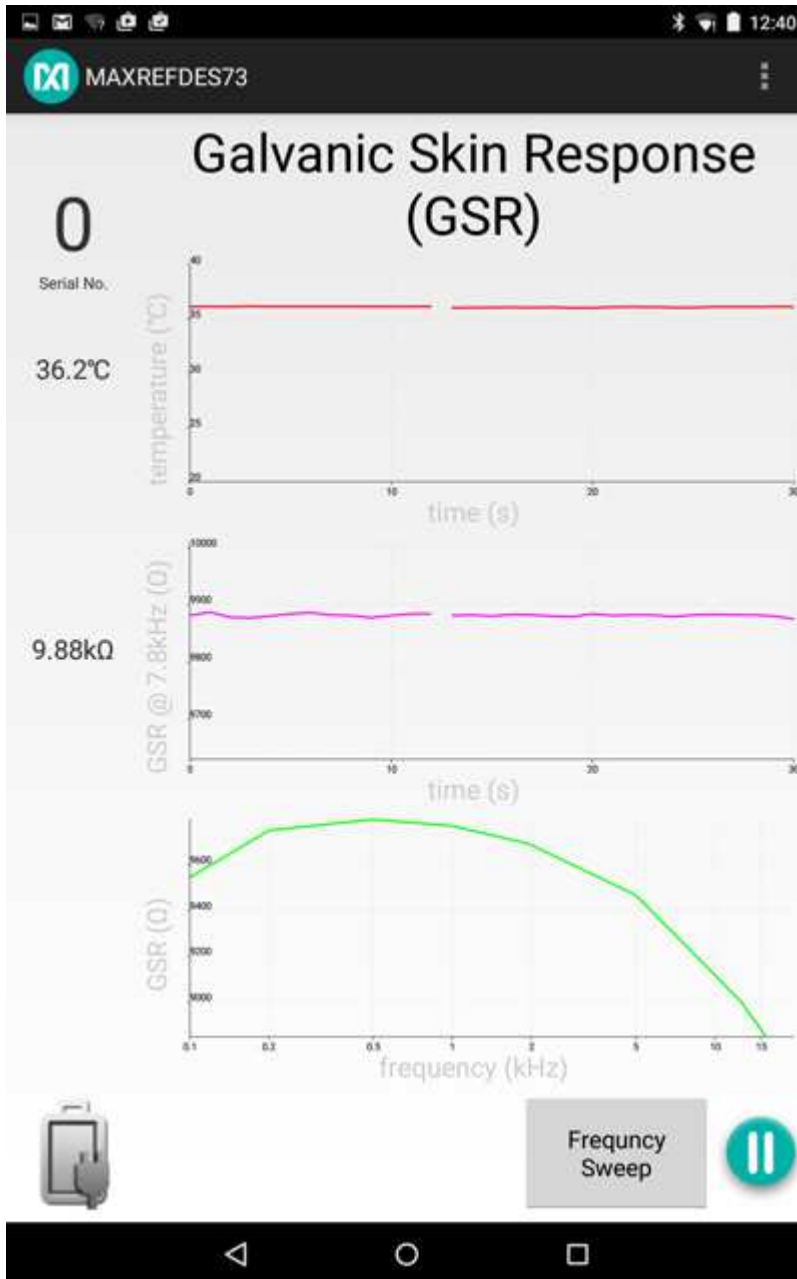


Figure 6. MAXREFDES73# mobile app screenshot.

Lab Measurements

The MAXREFDES73# design was verified and tested under typical application cases. The platform is targeted for any developer who uses the MAX32600 wellness microcontroller to develop AC impedance and temperature measurement devices. The reference design is flexible to be customized for specific applications development.

Figure 7 shows the measurement of a 10kΩ resistor without calibration.

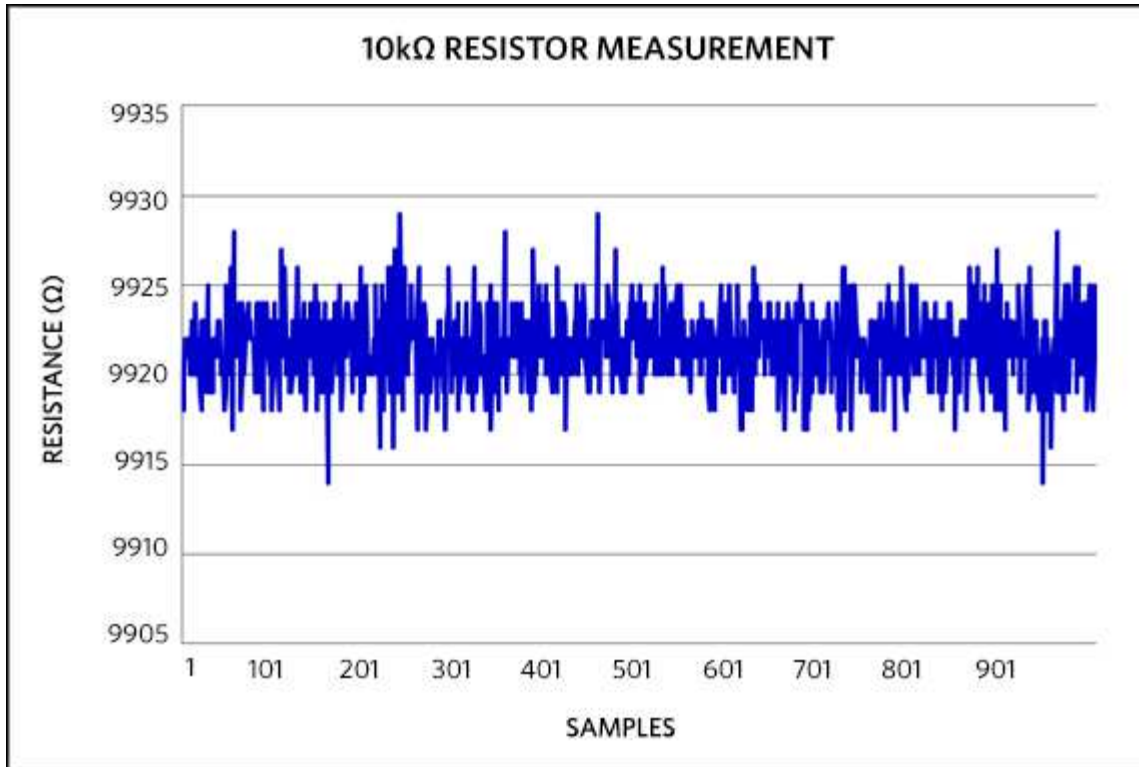


Figure 7. MAXREFDES73# 10kΩ resistor measurement.

Figure 8 shows the measurement of a human wrist temperature.

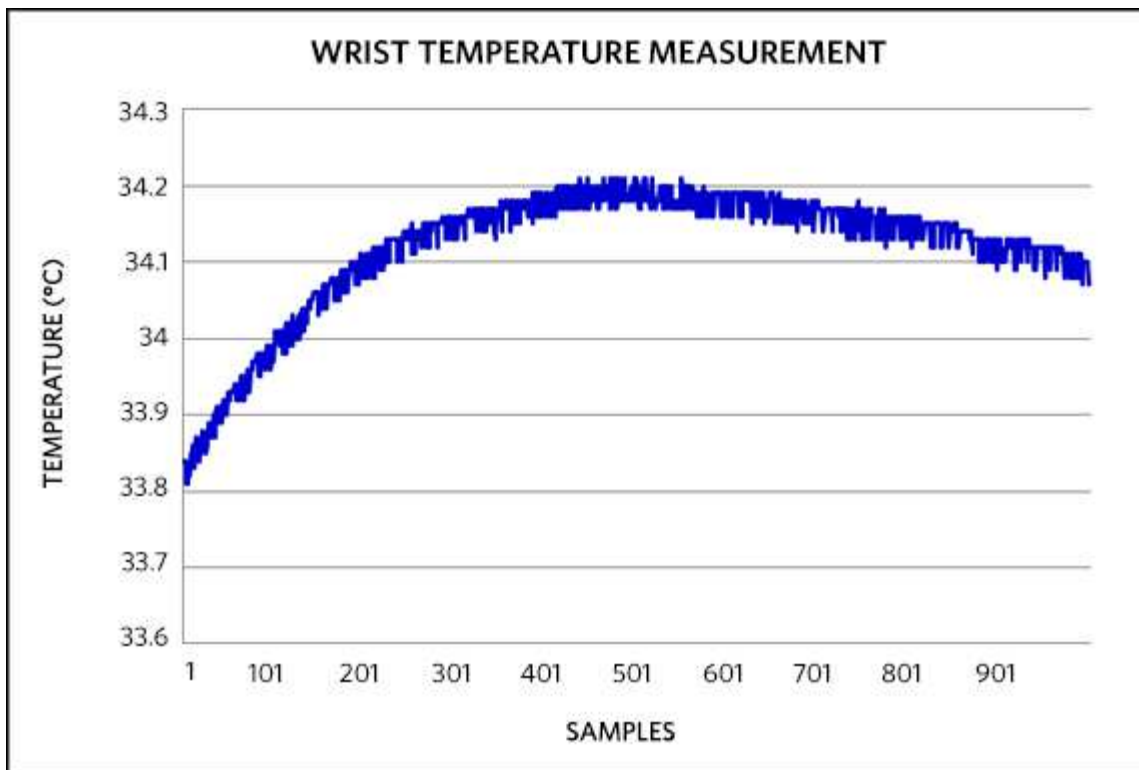


Figure 8. MAXREFDES73# wrist temperature measurement.

Android is a registered trademark of Google Inc.

ARM is a registered trademark and registered service mark and Cortex is a registered trademark of ARM Limited.

The Bluetooth word mark and logos are registered trademarks owned by Bluetooth SIG, Inc. and any use of such marks by Maxim Integrated is under license.

Quick Start

Required Equipment:

Purchased from Maxim:

- MAXREFDES73# reference design (GSR wrist-worn device)

User supplied:

- A tablet or smart phone for Android with Android 4.3 or later

Follow the ensuing procedure to verify the correct functioning of the MAXREFDES73#.

▲ Procedure

1. Go to the Google Play store to download the latest version of the MAXREFDES73# mobile app. In the Google Play search box, type MAXREFDES73.
2. Start the MAXREFDES73# mobile app.
3. Wear the MAXREFDES73# device on a wrist. Make sure the electrodes firmly touch the wrist skin. Alternatively, use a 10k Ω resistor to connect the electrodes.
4. On the device, press the pushbutton, the green LED turns on.
5. On the mobile app, when the BLE advertisement is detected, tap the device found.
6. The mobile app displays the temperature and impedance magnitude. Refreshing every 1s.
7. Verify that the red LED on the device flashes shortly every 1s.
8. Tap **Frequency Sweep** icon on the mobile app. About 5s later, the Bode plot is updated with the latest data from the device. A screenshot is shown in **Figure 6**.