



Chipsmall Limited consists of a professional team with an average of over 10 year of expertise in the distribution of electronic components. Based in Hongkong, we have already established firm and mutual-benefit business relationships with customers from,Europe,America and south Asia,supplying obsolete and hard-to-find components to meet their specific needs.

With the principle of “Quality Parts,Customers Priority,Honest Operation,and Considerate Service”,our business mainly focus on the distribution of electronic components. Line cards we deal with include Microchip,ALPS,ROHM,Xilinx,Pulse,ON,Everlight and Freescale. Main products comprise IC,Modules,Potentiometer,IC Socket,Relay,Connector.Our parts cover such applications as commercial,industrial, and automotives areas.

We are looking forward to setting up business relationship with you and hope to provide you with the best service and solution. Let us make a better world for our industry!



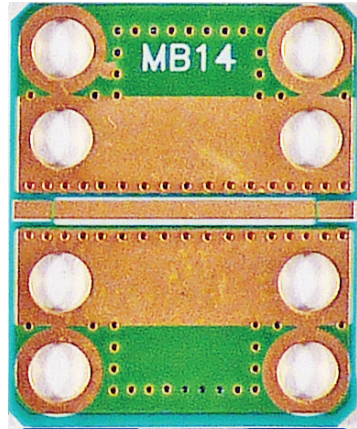
Contact us

Tel: +86-755-8981 8866 Fax: +86-755-8427 6832

Email & Skype: info@chipsmall.com Web: www.chipsmall.com

Address: A1208, Overseas Decoration Building, #122 Zhenhua RD., Futian, Shenzhen, China





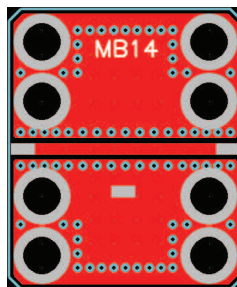
FEATURES

- Use for traight-through connections
- Can also be used for custom passive networks
- RO-4350 board material
- Fits MicroAmp MH-series housings

The MicroAmp MB-14 circuit board is used for a straight-through connection with the MicroAmp MH series of connectorized housings. It can be used as an extension when designing multiple board circuits with the MH-2 housing, thereby allowing a single board to be tested before adding a second one in cascade. The MB-14 can also be used to create custom passive networks by cutting the center trace and soldering components in series or shunt. Boards are fabricated from a high-performance 13 mil thick RO-4350 laminate with RoHS compatible ENIG plating (electroless nickel/immersion gold) on both the component side and the solid bottom ground plane. The board measures 0.490" x 0.590" and mounts into the housing with four or eight #1-72 screws for optimal high frequency grounding. Pads for the input/output RF connectors allow the SMA center pins to be easily soldered to the board after it is installed into the housing.



THROUGH-LINE SCHEMATIC



ASSEMBLY

REF	SIZE	FUNCTION
J1	N/A	RF port
J2	N/A	RF port

For additional product information, please visit www.twinind.com

Contact information: 925-866-8946 (phone) 925-866-8937 (fax) Sales@twinind.com