



Chipsmall Limited consists of a professional team with an average of over 10 year of expertise in the distribution of electronic components. Based in Hongkong, we have already established firm and mutual-benefit business relationships with customers from,Europe,America and south Asia,supplying obsolete and hard-to-find components to meet their specific needs.

With the principle of “Quality Parts,Customers Priority,Honest Operation,and Considerate Service”,our business mainly focus on the distribution of electronic components. Line cards we deal with include Microchip,ALPS,ROHM,Xilinx,Pulse,ON,Everlight and Freescale. Main products comprise IC,Modules,Potentiometer,IC Socket,Relay,Connector.Our parts cover such applications as commercial,industrial, and automotives areas.

We are looking forward to setting up business relationship with you and hope to provide you with the best service and solution. Let us make a better world for our industry!



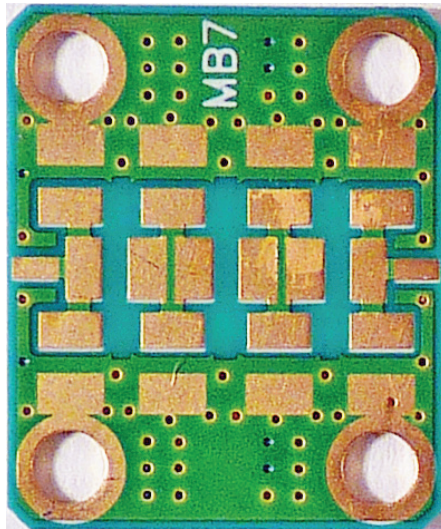
Contact us

Tel: +86-755-8981 8866 Fax: +86-755-8427 6832

Email & Skype: info@chipsmall.com Web: www.chipsmall.com

Address: A1208, Overseas Decoration Building, #122 Zhenhua RD., Futian, Shenzhen, China



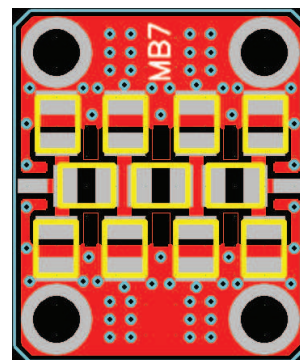


FEATURES

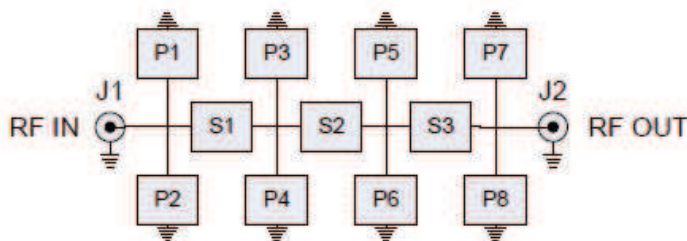
- Generic layout for passive networks
- Easily create lumped element filters, equalizers, bias networks, attenuators, etc.
- Up to three series elements
- Up to eight parallel elements
- Accommodates 0603/0805 parts
- RO-4350 board material
- Fits MicroAmp MH-series housings

The MicroAmp MB-7 circuit board is designed for rapid prototyping of passive networks such as filters, attenuators, equalizers, bias tees, etc. Passive elements such as resistors, capacitors, and inductors can be combined in a variety of series and shunt configurations. Networks can be easily designed and assembled with standard surface-mount passive components. It includes provisions for three series elements and up to eight shunt elements in either 0603 or 0805 packages. This board will fit the MicroAmp MH series of connectorized housings that allow it to be used as a single passive network or cascaded with other MicroAmp boards for added versatility. Boards are fabricated from a high-performance 13 mil thick RO-4350 laminate with RoHS compatible ENIG plating (electroless nickel/immersion gold) on both the component side and the solid bottom ground plane. The board measures 0.490" x 0.590" and mounts into the housing with four #1-72 screws. Pads for the RF connectors allow the SMA center pins to be easily soldered to the board after it is installed into the housing.

REF	SIZE	FUNCTION
S1-S3	0603/0805	Series element
P1-P8	0603/0805	Parallel element
J1		Input
J2		Output



ASSEMBLY



NETWORK SCHEMATIC

For additional product information, please visit www.twinind.com

Contact information: 925-866-8946 (phone) 925-866-8937 (fax) Sales@twinind.com