



Chipsmall Limited consists of a professional team with an average of over 10 year of expertise in the distribution of electronic components. Based in Hongkong, we have already established firm and mutual-benefit business relationships with customers from,Europe,America and south Asia,supplying obsolete and hard-to-find components to meet their specific needs.

With the principle of “Quality Parts,Customers Priority,Honest Operation,and Considerate Service”,our business mainly focus on the distribution of electronic components. Line cards we deal with include Microchip,ALPS,ROHM,Xilinx,Pulse,ON,Everlight and Freescale. Main products comprise IC,Modules,Potentiometer,IC Socket,Relay,Connector.Our parts cover such applications as commercial,industrial, and automotives areas.

We are looking forward to setting up business relationship with you and hope to provide you with the best service and solution. Let us make a better world for our industry!



Contact us

Tel: +86-755-8981 8866 Fax: +86-755-8427 6832

Email & Skype: info@chipsmall.com Web: www.chipsmall.com

Address: A1208, Overseas Decoration Building, #122 Zhenhua RD., Futian, Shenzhen, China



6A to 36A, 250VAC EMI Filters

Features

- ◆ High Attenuation Wide Band Two Stage Filter
- ◆ Screw Terminals with Cover
- ◆ Low Profile, Metal Case



Last time buy - June 1, 2014

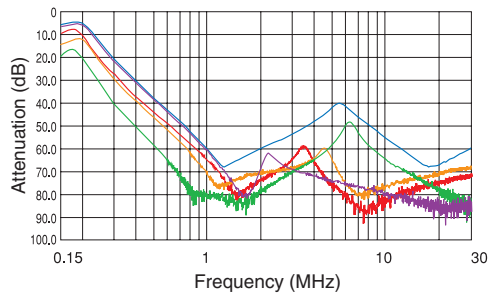
Specifications						
Model		MB1206	MB1210	MB1216	MB1220	MB1236
Rated Voltage (AC,DC)	V	250V				
Rated Current (AC,DC) (1)	A	6	10	16	20	36
Test Voltage (terminal to case, AC 1 min.)	V	2500V (20mA) at 25°C, 70% RH				
Isolation Resistance (terminal to case, 500VDC)	Ω	100M Ohms min. at 25°C, 70% RH				
Leakage Current	-	125V, 60Hz =0.5mA max.; 250V, 60Hz =1mA max.				
DC Resistance	mΩ	140	50	34	20	9
Temperature Rise	°C	40°C max.				
Operating Temperature (1)	°C	-25 to +85°C				
Operating Humidity	%	30% to 95% RH (non-condensing)				
Storage Temperature	°C	-40 to +85°C				
Storage Humidity	%	10% to 95% RH (non-condensing)				
Vibration	-	Sweep:10-55-10Hz (1min.), Amplitude 1.5mm X, Y, and Z axes, 2 hours each				
Safety Standard	-	UL1283, CSA C22.2 No.8 (C-UL), VDE0565 Teil3, Teil3A2, and EN133200 (VDE)				

Notes:

(1) Value at Ta ≤35°C. Refer to the derating curve at Ta > 35°C.

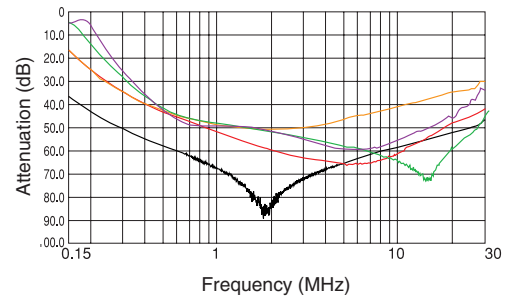
Typ. Insertion Loss, Symmetrical

MB1206 MB1210 MB1216 MB1220 MB1236

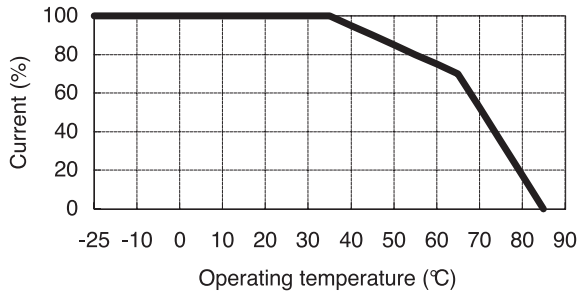


Typ. Insertion Loss, Asymmetrical

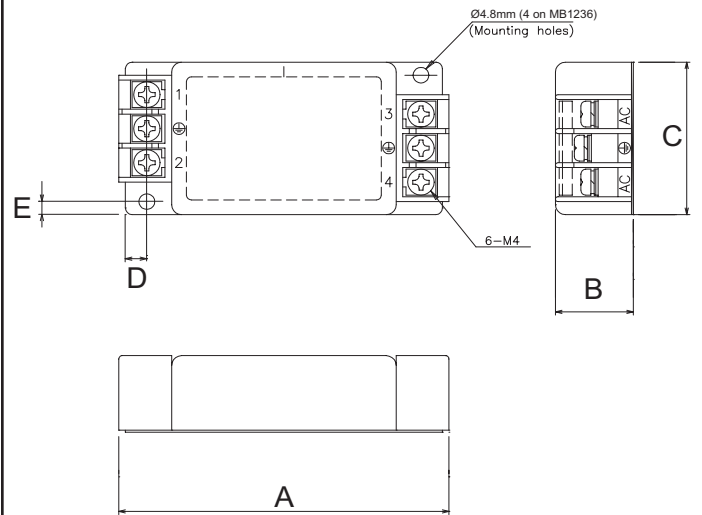
MB1206 MB1210 MB1216 MB1220 MB1236



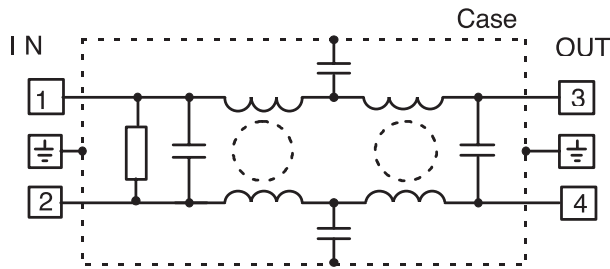
Derating



Outline Drawing



Circuit



For Additional Information, please visit us.tdk-lambda.com/lp/products/mb-series.htm



Dimensions Table

Model	A	B	C	D	E	Weight (g)
MB1206	100	23.6	47	6.5	4	190
MB1210	107	26	47	6.5	4	220
MB1216	117	30	47	6.5	4	310
MB1220	151	35	52	6.5	4	530
MB1236	151	35	67	7.5	6.5	660

Last time buy - June 1, 2014