



Chipsmall Limited consists of a professional team with an average of over 10 year of expertise in the distribution of electronic components. Based in Hongkong, we have already established firm and mutual-benefit business relationships with customers from,Europe,America and south Asia,supplying obsolete and hard-to-find components to meet their specific needs.

With the principle of “Quality Parts,Customers Priority,Honest Operation,and Considerate Service”,our business mainly focus on the distribution of electronic components. Line cards we deal with include Microchip,ALPS,ROHM,Xilinx,Pulse,ON,Everlight and Freescale. Main products comprise IC,Modules,Potentiometer,IC Socket,Relay,Connector.Our parts cover such applications as commercial,industrial, and automotives areas.

We are looking forward to setting up business relationship with you and hope to provide you with the best service and solution. Let us make a better world for our industry!



Contact us

Tel: +86-755-8981 8866 Fax: +86-755-8427 6832

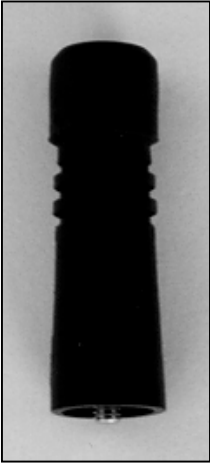
Email & Skype: info@chipsmall.com Web: www.chipsmall.com

Address: A1208, Overseas Decoration Building, #122 Zhenhua RD., Futian, Shenzhen, China



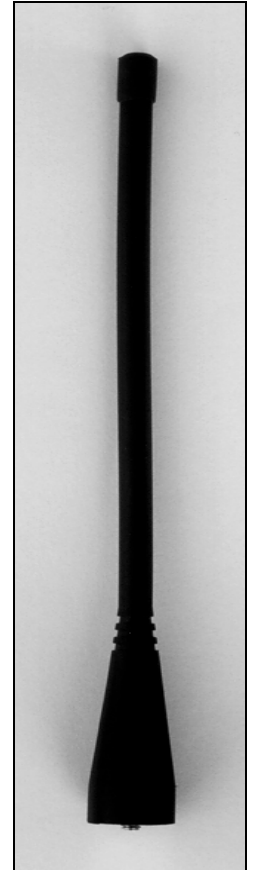
Antenna

A range of high quality antennae designed and manufactured for operation specifically with Low power short range telemetry systems. Using one of the following antennae will give optimum range and reliability to your application.



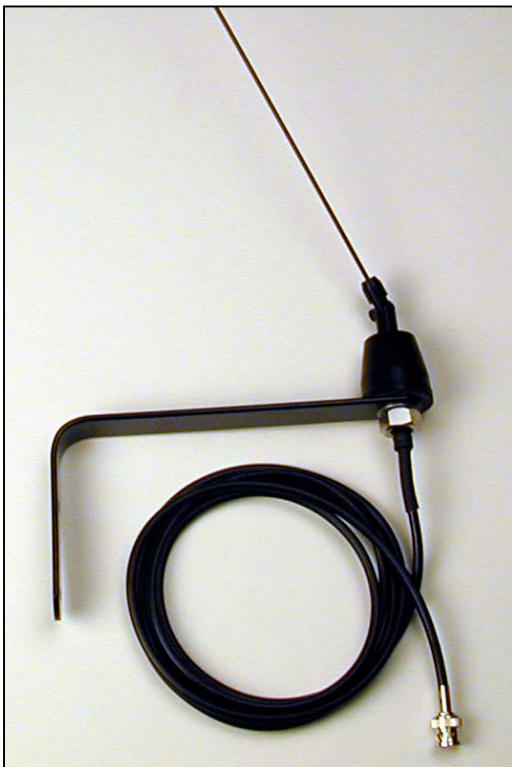
'Stubby' Helical Antenna

- $\frac{1}{4}$ Wavelength **Helical** Antenna
- Rugged Plastic Finish, Flexible Antenna
- Available As BNC, 4BA, M4 Screw Fixing



$\frac{1}{4}$ Wave Flexible Antenna

- Standard $\frac{1}{4}$ Wavelength **Whip** Antenna
- Rugged Plastic Finish. Flexible Antenna
- Available As BNC, 4BA, M4 Screw Fixing



+3db GAIN ANTENNA

- +3db GAIN $\frac{5}{8}$ Wavelength Whip Antenna
- Integral Wall Mounting Bracket
- Supplied With 2 Metres Coax Cable & BNC (50 Ω)

Note: In Order To Comply With The UK DTI Regulations, A Gain Antenna Must Not Be Used On Any Transmitting Device.

Antenna



Puk Antenna

- Panel Mounting **Puk** Antenna
- Rugged Plastic Finish
- Available with BNC, SMA Fixings

Dipole Antenna

- Flat Form **Dipole** Antenna
- Tuned for european GSM frequencies
- Rugged Plastic Finish
- Self Adhesive Pad
- Available with SMA Fixing



1/4 Wave Whip Antenna Dimensions (mm)

	M4		4BA		BNC	
	Length	Dia	Length	Dia	Length	Dia
315MHz	*	*	231	13	250	18
433MHz	162.5	13	160.5	13	172	17
458MHz	-	-	-	-	164	16
868MHz	97	13	-	-	81	17.5
916MHz	-	-	83	13	-	-

Helical / Compressed Helical / Gain Antenna Dimensions (mm)

	Helical M4		Helical 4BA		Helical BNC		Comp. Helical M4		Gain	
	Length	Dia	Length	Dia	Length	Dia	Length	Dia	Length	Dia
173MHz	-	-	*	*	-	-	-	-	*	*
315MHz	-	-	72	13	105	17	-	-	*	*
433MHz	55	14	55.5	13	84	17	35	14	490	14
458MHz	-	-	-	-	81	17	-	-	-	-
868MHz	-	-	-	-	-	-	-	-	-	-
916MHz	-	-	83	13	*	*	-	-	-	-



Antenna

Puk / Dipole Antenna Dimensions (mm)

	Puk			Dipole			
	Height	Dia	Cable Length	Length	Width	Height	Cable Length
433MHz	52	47	500				
900/1800 MHz				112	60	10	175

Part Numbers

¹ / ₄ Wave Whip					
Fixing	315MHz	433MHz	458MHz	868MHz	915Hz
M4	-	FLEXI-M4-433	-	FLEXI-M4-868	-
4BA	FLEXI-4BA-315	FLEXI-4BA-433	-	-	FLEXI-4BA-916
BNC	-	FLEXI-BNC-433	FLEXI-BNC-458	FLEXI-BNC-868	-

Helical					
Fixing	173MHz	315MHz	433MHz	458MHz	915Hz
M4	-	-	PU-M4-433	-	-
4BA	PH-4BA-173	PU-4BA-315	PU-4BA-433	-	PU-4BA-916
BNC	-	PU-BNC-315	PU-BNC-433	PU-BNC-458	-

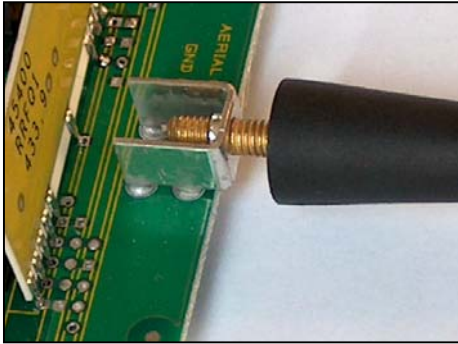
Compressed Helical					
Fixing	173MHz	433MHz	458MHz	868MHz	915Hz
M4	-	PHC-M4-433	-	-	-

Gain Antenna					
Fixing	173MHz	433MHz	458MHz	868MHz	915Hz
Mag Mount	SR150M/TS	-	-	-	-
Wall Mounting Bracket (incl)	-	MB450-RFS433	-	-	-
YAGI	-	-	YU8-458	-	-

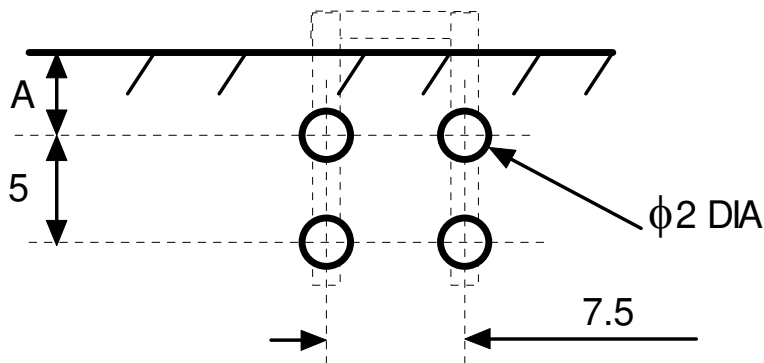
Puk / Dipole Antenna		
Fixing	433MHz	900/1800 MHz
BNC	ANTPUK1-433	-
SMA	ANTPUK1-433-SMA	ANTGSM-ADH-RASMA

SCTM4RA

The SCRTM4RA is a PCB mounting terminal providing a simple method of attaching a low cost 4mm Screw thread antenna to a PCB.



PCB Layout



All dimensions in mm

$A = 5,1$ mm excluding screw head, this also depends on how far the screw terminal is from the outside surface of the box its fitted into.