



Chipsmall Limited consists of a professional team with an average of over 10 year of expertise in the distribution of electronic components. Based in Hongkong, we have already established firm and mutual-benefit business relationships with customers from,Europe,America and south Asia,supplying obsolete and hard-to-find components to meet their specific needs.

With the principle of “Quality Parts,Customers Priority,Honest Operation,and Considerate Service”,our business mainly focus on the distribution of electronic components. Line cards we deal with include Microchip,ALPS,ROHM,Xilinx,Pulse,ON,Everlight and Freescale. Main products comprise IC,Modules,Potentiometer,IC Socket,Relay,Connector.Our parts cover such applications as commercial,industrial, and automotives areas.

We are looking forward to setting up business relationship with you and hope to provide you with the best service and solution. Let us make a better world for our industry!



Contact us

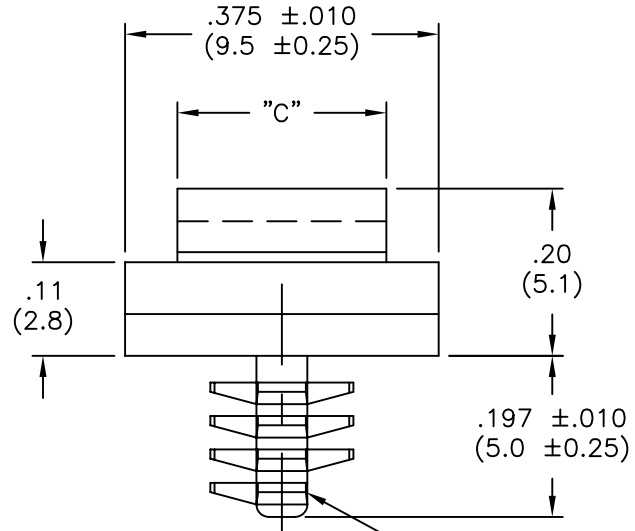
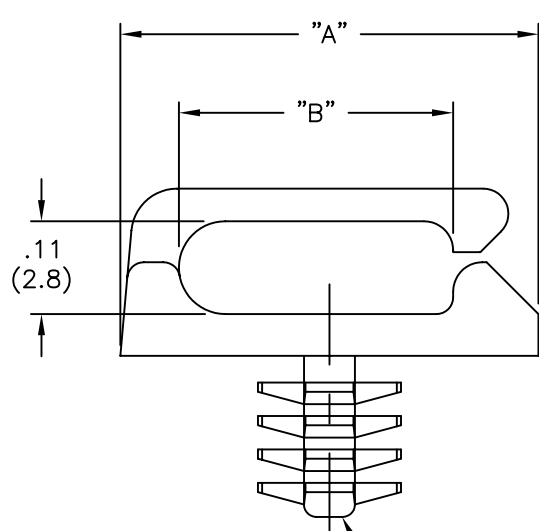
Tel: +86-755-8981 8866 Fax: +86-755-8427 6832

Email & Skype: info@chipsmall.com Web: www.chipsmall.com

Address: A1208, Overseas Decoration Building, #122 Zhenhua RD., Futian, Shenzhen, China



PART NO.	"A"±.010 (±0.25)	"B"±.010 (±0.25)	"C"±.010 (±0.25)
MBHWSSE-1-01	.50 (12.7)	.33 (8.3)	.25 (6.4)
MBHWSSE1-1-01	.67 (17.0)	.49 (12.5)	.315 (8.0)



TO PRESS FIT IN A $.156 \pm .003$
(3.96 ± 0.08) DIA. HOLE, IN A
.04 TO .16 (1.00 TO 4.06)
THICK PANEL.

TYPICAL EJECTOR
PIN LOCATION
(SEE NOTE 3.)

NOTES:

1. MATERIAL: NYLON 6/6, RMS-01.
FLAME RETARDANT NYLON (RMS-19)
AVAILABLE BY SPECIAL ORDER.
2. COLOR: NATURAL.
3. FIN WILL ONLY APPEAR ON LEFT
OR RIGHT SIDE, IN THIS VIEW

TITLE: MICRO-BLIND HOLE, WIRE SADDLE, SIDE ENTRY				DWG IN IN (MM)		FINAL		PRINT TYPE	
TOLERANCES UNLESS NOTED .XX=±.010 .XXX=±.005 FRAC=1/64 ANG=1°		FILE # MBHWSSE	DWN: S.M.	APP:		PART #		CA	
MAT'L: SEE NOTES		RE: RICHCO, INC.	DT: 3/23/01	DT:		SEE TABLE			
RICHCO INC. PO BOX 804238, CHICAGO, 60680 (773) 539-4060									

B	SEE ECN #1354 FOR CHANGES	SK 08.20.07
A	SEE ECN #503 FOR CHANGES	SM 10.25.02
REV	DESCRIPTION	ENGR DATE