



Chipsmall Limited consists of a professional team with an average of over 10 year of expertise in the distribution of electronic components. Based in Hongkong, we have already established firm and mutual-benefit business relationships with customers from,Europe,America and south Asia,supplying obsolete and hard-to-find components to meet their specific needs.

With the principle of “Quality Parts,Customers Priority,Honest Operation,and Considerate Service”,our business mainly focus on the distribution of electronic components. Line cards we deal with include Microchip,ALPS,ROHM,Xilinx,Pulse,ON,Everlight and Freescale. Main products comprise IC,Modules,Potentiometer,IC Socket,Relay,Connector.Our parts cover such applications as commercial,industrial, and automotives areas.

We are looking forward to setting up business relationship with you and hope to provide you with the best service and solution. Let us make a better world for our industry!



## Contact us

Tel: +86-755-8981 8866 Fax: +86-755-8427 6832

Email & Skype: info@chipsmall.com Web: www.chipsmall.com

Address: A1208, Overseas Decoration Building, #122 Zhenhua RD., Futian, Shenzhen, China



## 870 MHz GaAs CATV 25 dB POWER DOUBLER AMPLIFIER

### FEATURES

- **GaAs ACTIVE DEVICES**
- **LOW DISTORTION**
- **HIGH LINEAR GAIN:**  
MC-7847-KC - GL = 25 dB MIN at f = 870 MHz
- **LOW RETURN LOSS**
- **LOW GAIN CHANGE OVER TEMPERATURE**
- **SPECIFIED FOR 79, 110, and 132 CHANNELS PERFORMANCE**
- **HIGH RELIABILITY AND RUGGEDNESS:**  
Withstands environmental extremes as well as Silicon devices (Surge, ESD, Etc.)

### DESCRIPTION

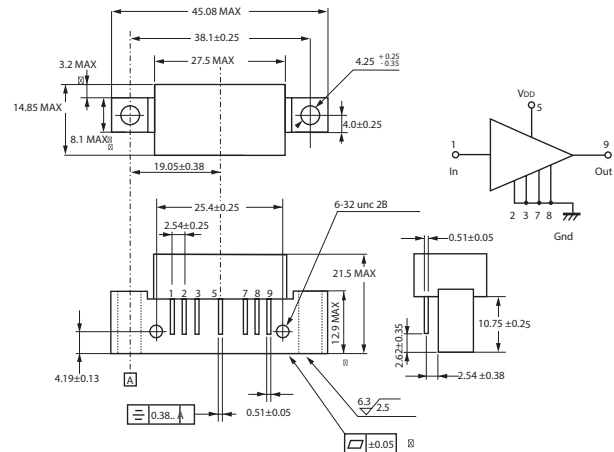
The MC-7847-KC is a GaAs Multi-Chip Modules designed for use as output stages in CATV applications up to 870 MHz. This is a high gain device offering 25 dB minimum gain at 870 MHz. Because this unit is a GaAs device it has low distortion, low noise figure, and low return loss across the entire frequency band.

The MC-7847-KC is similar to the standard push-pull devices, but the higher current allows for better distortion performance, especially X-mod.

Like the previous generation of products, these devices survive such hazards as surge and ESD as well as their silicon competitors, but deliver superior performance with low DC current required. All devices are assembled and tested using fully automated equipment to maximize consistency in part to part performance, and reliability is assured by stringent quality and process control procedures. These parts come in industry compatible hybrid packages.

### OUTLINE DIMENSIONS (Units in mm)

#### PACKAGE OUTLINE H02



### APPLICATIONS

- **CATV HEADEND SYSTEMS**
- **CATV OPTICAL NODES**
- **CATV DISTRIBUTION AMPS**

### ELECTRICAL CHARACTERISTICS (TA = 30±5 °C, VDD = 24 V, ZS = ZL = 75 Ω)

PART NUMBER			MC-7847-KC			TEST CONDITIONS
SYMBOLS	CHARACTERISTICS	UNITS	MIN	TYP	MAX	
BW	Frequency Range	MHz	50	–	870	
GL	Linear Gain	dB	25.0	–	26.0	f = 870 MHz
S	Gain Slope	dB	1.0	1.4	1.8	f = 40 to 870 MHz
Gf	Gain Flatness	dB	–	–	0.6	40 to 870 MHz; Peak to Valley
NF	Noise Figure 1	dB	–	–	5.5	f = 50 MHz
	Noise Figure 2		–	–	6.0	f = 870 MHz
RLi	Input Return Loss	dB	20.0	–	–	40 to 160MHz
			20.0	–	–	160 to 320 MHz
			19.5	–	–	320 to 640 MHz
			17.0	–	–	640 to 870 MHz
RLo	Output Return Loss	dB	20.0	–	–	40 to 160MHz
IDD	Operating Current	mA	350	–	420	RF OFF
CTB	Composite Triple Beat	dBc	–	–	-60	110 Channels
XMod	Cross Modulation <sup>1</sup>	dBc	–	–	-55	VOUT = 50 dBmV at 745.25 MHz, 10 dB tilted across the band
CSO	Composite Second Order	dBc	–	–	-63	

1. Measured per US standard methods and procedures (using selective level meter).

**ABSOLUTE  
MAXIMUM RATINGS<sup>1</sup>** (T<sub>CASE</sub>= 30 °C)

SYMBOLS	PARAMETERS	UNITS	RATINGS
V <sub>DD</sub>	Supply Voltage	V	30
V <sub>i</sub>	Input Voltage (Single Tone) <sup>2</sup>	dBmV	65
T <sub>c</sub>	Operating Case Temperature	°C	-30 to +100
T <sub>STG</sub>	Storage Temperature	°C	-40 to +100

Note:

1. Operation in excess of any one of these parameters may result in permanent damage.
2. Maximum single channel power applied to the input for 1 minute with no measurable degradation in performance.

**RECOMMENDED  
OPERATING CONDITIONS** (Z<sub>s</sub> = Z<sub>L</sub> = 75Ω)

SYMBOLS	PARAMETERS	UNITS	MIN	TYP	MAX
V <sub>DD</sub>	Supply VoltageV		23.5	24.0	24.5
V <sub>i</sub>	Input Voltage <sup>1</sup> , MC-7847-KC	dBmV	-	32.0	35.0
T <sub>c</sub>	Operating Case Temperature	°C	-30	+25	+85

Note:

1. Test Conditions: 110 Channels, 10 dB tilted across the band.

**ORDERING INFORMATION**

PART NUMBER	PACKAGE	QUANTITY
MC-7847-KC-AZ	7-pin special with heatsink (Pb-Free)	25 pcs max/ Tray

**NOTES ON CORRECT USE**

1. The space between PC board and root of the lead should be kept more than 1 mm to prevent undesired stress on the lead and also should be kept less than 4 mm to prevent undesired parasitic inductance.

Recommended space is 2.0 to 3.0 mm typical.

2. Recommended torque strength of the screw is 59 to 78 Ncm.

3. Form the ground pattern as wide as possible to minimize ground impedance. (to prevent undesired oscillation)

All the ground pins must be connected together with wide ground pattern to decrease impedance difference.

**RECOMMENDED SOLDERING CONDITIONS**

This product should be soldered in the following recommended conditions. Other soldering methods and conditions than the recommended conditions are to be consulted with our sales representatives.

Soldering Method	Soldering Conditions	Condition Symbol
Pin Part Heating	Pin area temperature: less than 260°C <sup>1</sup> Hour: Within 2 sec./pin	-

Note.

1. The point of pin part heating must be kept at a distance of more than 1.2 mm from the root of lead.