



Chipsmall Limited consists of a professional team with an average of over 10 year of expertise in the distribution of electronic components. Based in Hongkong, we have already established firm and mutual-benefit business relationships with customers from,Europe,America and south Asia,supplying obsolete and hard-to-find components to meet their specific needs.

With the principle of “Quality Parts,Customers Priority,Honest Operation,and Considerate Service”,our business mainly focus on the distribution of electronic components. Line cards we deal with include Microchip,ALPS,ROHM,Xilinx,Pulse,ON,Everlight and Freescale. Main products comprise IC,Modules,Potentiometer,IC Socket,Relay,Connector.Our parts cover such applications as commercial,industrial, and automotives areas.

We are looking forward to setting up business relationship with you and hope to provide you with the best service and solution. Let us make a better world for our industry!



## Contact us

Tel: +86-755-8981 8866 Fax: +86-755-8427 6832

Email & Skype: info@chipsmall.com Web: www.chipsmall.com

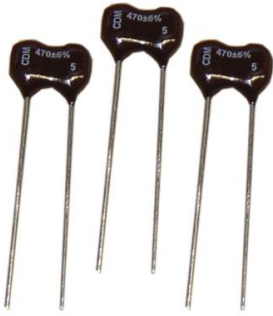
Address: A1208, Overseas Decoration Building, #122 Zhenhua RD., Futian, Shenzhen, China



## MICA-KIT1

### CONTENTS:

5 PCS. EACH OF 46 PART#S  
POPULAR RATINGS

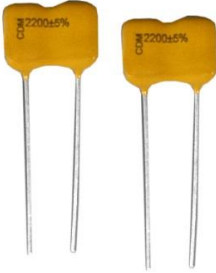


| QTY | CAPACITOR PN  | CAPACITANCE | VOLTAGE |
|-----|---------------|-------------|---------|
| 5   | CD15FA102JO3  | 1000 pF     | 100     |
| 5   | CD5CC050DO3   | 5 pF        | 300     |
| 5   | CD5CC100JO3   | 10 pF       | 300     |
| 5   | CD5EC200JO3   | 20 pF       | 300     |
| 5   | CD5EC330JO3   | 33 pF       | 300     |
| 5   | CD5EC470JO3   | 47 pF       | 300     |
| 5   | CD5FC101JO3   | 100 pF      | 300     |
| 5   | CD15FC561JO3  | 560 pF      | 300     |
| 5   | CD15FC681JO3  | 680 pF      | 300     |
| 5   | CD15FC821JO3  | 820 pF      | 300     |
| 5   | CD15CD030DO3  | 3 pF        | 500     |
| 5   | CD10CD050DO3  | 5 pF        | 500     |
| 5   | CD15CD050DO3  | 5 pF        | 500     |
| 5   | CD10CD100JO3  | 10 pF       | 500     |
| 5   | CD15CD100JO3  | 10 pF       | 500     |
| 5   | CD15CD150JO3  | 15 pF       | 500     |
| 5   | CD15CD180JO3  | 18 pF       | 500     |
| 5   | CD10ED200JO3  | 20 pF       | 500     |
| 5   | CD15ED200JO3  | 20 pF       | 500     |
| 5   | CD10ED220JO3  | 22 pF       | 500     |
| 5   | CD15ED220JO3  | 22 pF       | 500     |
| 5   | CD15ED240JO3  | 24 pF       | 500     |
| 5   | CD10ED270JO3  | 27 pF       | 500     |
| 5   | CD15ED270JO3  | 27 pF       | 500     |
| 5   | CD10ED300JO3  | 30 pF       | 500     |
| 5   | CD15ED300JO3  | 30 pF       | 500     |
| 5   | CD15ED330JO3  | 33 pF       | 500     |
| 5   | CD15ED390JO3  | 39 pF       | 500     |
| 5   | CD10ED470JO3  | 47 pF       | 500     |
| 5   | CD15ED470JO3  | 47 pF       | 500     |
| 5   | CD15ED500JO3  | 50 pF       | 500     |
| 5   | CD10FD101JO3  | 100 pF      | 500     |
| 5   | CD15FD101JO3  | 100 pF      | 500     |
| 5   | CD15FD151JO3  | 150 pF      | 500     |
| 5   | CD15FD181JO3  | 180 pF      | 500     |
| 5   | CD15FD201JO3  | 200 pF      | 500     |
| 5   | CD15FD221JO3  | 220 pF      | 500     |
| 5   | CD15FD271JO3  | 270 pF      | 500     |
| 5   | CD15FD301JO3  | 300 pF      | 500     |
| 5   | CD15FD331JO3  | 330 pF      | 500     |
| 5   | CD15FD471JO3  | 470 pF      | 500     |
| 5   | CD15FD511JO3  | 510 pF      | 500     |
| 5   | CD19FD561JO3  | 560 pF      | 500     |
| 5   | CD19FD102JO3  | 1000 pF     | 500     |
| 5   | CDV19FF331JO3 | 330 pF      | 1000    |
| 5   | CDV19FF681JO3 | 680 pF      | 1000    |
|     |               |             |         |

## MICA-KIT1F

### CONTENTS:

5 PCS. EACH OF 46 RoHS PART#S  
POPULAR RATINGS

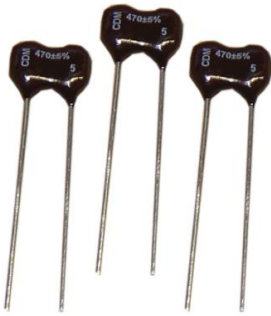


| QTY | CAPACITOR PN   | CAPACITANCE | VOLTAGE |
|-----|----------------|-------------|---------|
| 5   | CD15FA102JO3F  | 1000 pF     | 100     |
| 5   | CD5CC050DO3F   | 5 pF        | 300     |
| 5   | CD5CC100JO3F   | 10 pF       | 300     |
| 5   | CD5EC200JO3F   | 20 pF       | 300     |
| 5   | CD5EC330JO3F   | 33 pF       | 300     |
| 5   | CD5EC470JO3F   | 47 pF       | 300     |
| 5   | CD5FC101JO3F   | 100 pF      | 300     |
| 5   | CD15FC561JO3F  | 560 pF      | 300     |
| 5   | CD15FC681JO3F  | 680 pF      | 300     |
| 5   | CD15FC821JO3F  | 820 pF      | 300     |
| 5   | CD15CD030DO3F  | 3 pF        | 500     |
| 5   | CD10CD050DO3F  | 5 pF        | 500     |
| 5   | CD15CD050DO3F  | 5 pF        | 500     |
| 5   | CD10CD100JO3F  | 10 pF       | 500     |
| 5   | CD15CD100JO3F  | 10 pF       | 500     |
| 5   | CD15CD150JO3F  | 15 pF       | 500     |
| 5   | CD15CD180JO3F  | 18 pF       | 500     |
| 5   | CD10ED200JO3F  | 20 pF       | 500     |
| 5   | CD15ED200JO3F  | 20 pF       | 500     |
| 5   | CD10ED220JO3F  | 22 pF       | 500     |
| 5   | CD15ED220JO3F  | 22 pF       | 500     |
| 5   | CD15ED240JO3F  | 24 pF       | 500     |
| 5   | CD10ED270JO3F  | 27 pF       | 500     |
| 5   | CD15ED270JO3F  | 27 pF       | 500     |
| 5   | CD10ED300JO3F  | 30 pF       | 500     |
| 5   | CD15ED300JO3F  | 30 pF       | 500     |
| 5   | CD15ED330JO3F  | 33 pF       | 500     |
| 5   | CD15ED390JO3F  | 39 pF       | 500     |
| 5   | CD10ED470JO3F  | 47 pF       | 500     |
| 5   | CD15ED470JO3F  | 47 pF       | 500     |
| 5   | CD15ED500JO3F  | 50 pF       | 500     |
| 5   | CD10FD101JO3F  | 100 pF      | 500     |
| 5   | CD15FD101JO3F  | 100 pF      | 500     |
| 5   | CD15FD151JO3F  | 150 pF      | 500     |
| 5   | CD15FD181JO3F  | 180 pF      | 500     |
| 5   | CD15FD201JO3F  | 200 pF      | 500     |
| 5   | CD15FD221JO3F  | 220 pF      | 500     |
| 5   | CD15FD271JO3F  | 270 pF      | 500     |
| 5   | CD15FD301JO3F  | 300 pF      | 500     |
| 5   | CD15FD331JO3F  | 330 pF      | 500     |
| 5   | CD15FD471JO3F  | 470 pF      | 500     |
| 5   | CD15FD511JO3F  | 510 pF      | 500     |
| 5   | CD19FD561JO3F  | 560 pF      | 500     |
| 5   | CD19FD102JO3F  | 1000 pF     | 500     |
| 5   | CDV19FF331JO3F | 330 pF      | 1000    |
| 5   | CDV19FF681JO3F | 680 pF      | 1000    |
|     |                |             |         |

## MICA-KIT2

### CONTENTS:

5 PCS. EACH OF 57 CD5 PART#S



| QTY | CAPACITOR PN | CAPACITANCE | VOLTAGE |
|-----|--------------|-------------|---------|
| 5   | CD5FY221JO3  | 220 pF      | 50      |
| 5   | CD5FY221GO3  | 220 pF      | 50      |
| 5   | CD5FY271JO3  | 270 pF      | 50      |
| 5   | CD5FY271GO3  | 270 pF      | 50      |
| 5   | CD5FY301JO3  | 300 pF      | 50      |
| 5   | CD5FY301GO3  | 300 pF      | 50      |
| 5   | CD5FY331JO3  | 330 pF      | 50      |
| 5   | CD5FY331GO3  | 330 pF      | 50      |
| 5   | CD5FY331FO3  | 330 pF      | 50      |
| 5   | CD5FY391JO3  | 390 pF      | 50      |
| 5   | CD5FY391GO3  | 390 pF      | 50      |
| 5   | CD5FA131JO3  | 130 pF      | 100     |
| 5   | CD5FA131GO3  | 130 pF      | 100     |
| 5   | CD5FA151JO3  | 150 pF      | 100     |
| 5   | CD5FA151GO3  | 150 pF      | 100     |
| 5   | CD5FA201JO3  | 200 pF      | 100     |
| 5   | CD5FA201GO3  | 200 pF      | 100     |
| 5   | CD5CC010DO3  | 1 pF        | 300     |
| 5   | CD5CC020DO3  | 2 pF        | 300     |
| 5   | CD5CC030DO3  | 3 pF        | 300     |
| 5   | CD5CC040DO3  | 4 pF        | 300     |
| 5   | CD5CC050DO3  | 5 pF        | 300     |
| 5   | CD5CC060DO3  | 6 pF        | 300     |
| 5   | CD5CC070DO3  | 7 pF        | 300     |
| 5   | CD5CC080DO3  | 8 pF        | 300     |
| 5   | CD5CC090DO3  | 9 pF        | 300     |
| 5   | CD5CC100JO3  | 10 pF       | 300     |
| 5   | CD5CC110DO3  | 11 pF       | 300     |
| 5   | CD5CC120JO3  | 12 pF       | 300     |
| 5   | CD5CC150JO3  | 15 pF       | 300     |
| 5   | CD5CC180JO3  | 18 pF       | 300     |
| 5   | CD5EC200JO3  | 20 pF       | 300     |
| 5   | CD5EC200DO3  | 20 pF       | 300     |
| 5   | CD5EC220JO3  | 22 pF       | 300     |
| 5   | CD5EC300JO3  | 30 pF       | 300     |
| 5   | CD5EC300GO3  | 30 pF       | 300     |
| 5   | CD5EC330JO3  | 33 pF       | 300     |
| 5   | CD5EC330GO3  | 33 pF       | 300     |
| 5   | CD5EC390JO3  | 39 pF       | 300     |
| 5   | CD5EC390GO3  | 39 pF       | 300     |
| 5   | CD5EC470JO3  | 47 pF       | 300     |
| 5   | CD5EC470GO3  | 47 pF       | 300     |
| 5   | CD5EC510JO3  | 51 pF       | 300     |
| 5   | CD5EC510GO3  | 51 pF       | 300     |
| 5   | CD5EC560JO3  | 56 pF       | 300     |
| 5   | CD5EC620JO3  | 62 pF       | 300     |
| 5   | CD5EC620GO3  | 62 pF       | 300     |
| 5   | CD5EC680JO3  | 68 pF       | 300     |
| 5   | CD5EC680GO3  | 68 pF       | 300     |
| 5   | CD5EC750JO3  | 75 pF       | 300     |
| 5   | CD5EC750GO3  | 75 pF       | 300     |
| 5   | CD5EC820JO3  | 82 pF       | 300     |
| 5   | CD5EC820GO3  | 82 pF       | 300     |
| 5   | CD5FC101JO3  | 100 pF      | 300     |
| 5   | CD5FC101GO3  | 100 pF      | 300     |
| 5   | CD5FC121JO3  | 120 pF      | 300     |
| 5   | CD5FC121GO3  | 120 pF      | 300     |
|     |              |             |         |

## MICA-KIT2F

### CONTENTS:

5 PCS. EACH OF 57 CD5 RoHS PART#S



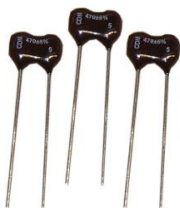
| QTY | CAPACITOR PN | CAPACITANCE | VOLTAGE |
|-----|--------------|-------------|---------|
| 5   | CD5FY221JO3F | 220 pF      | 50      |
| 5   | CD5FY221GO3F | 220 pF      | 50      |
| 5   | CD5FY271JO3F | 270 pF      | 50      |
| 5   | CD5FY271GO3F | 270 pF      | 50      |
| 5   | CD5FY301JO3F | 300 pF      | 50      |
| 5   | CD5FY301GO3F | 300 pF      | 50      |
| 5   | CD5FY331JO3F | 330 pF      | 50      |
| 5   | CD5FY331GO3F | 330 pF      | 50      |
| 5   | CD5FY331FO3F | 330 pF      | 50      |
| 5   | CD5FY391JO3F | 390 pF      | 50      |
| 5   | CD5FY391GO3F | 390 pF      | 50      |
| 5   | CD5FA131JO3F | 130 pF      | 100     |
| 5   | CD5FA131GO3F | 130 pF      | 100     |
| 5   | CD5FA151JO3F | 150 pF      | 100     |
| 5   | CD5FA151GO3F | 150 pF      | 100     |
| 5   | CD5FA201JO3F | 200 pF      | 100     |
| 5   | CD5FA201GO3F | 200 pF      | 100     |
| 5   | CD5CC010DO3F | 1 pF        | 300     |
| 5   | CD5CC020DO3F | 2 pF        | 300     |
| 5   | CD5CC030DO3F | 3 pF        | 300     |
| 5   | CD5CC040DO3F | 4 pF        | 300     |
| 5   | CD5CC050DO3F | 5 pF        | 300     |
| 5   | CD5CC060DO3F | 6 pF        | 300     |
| 5   | CD5CC070DO3F | 7 pF        | 300     |
| 5   | CD5CC080DO3F | 8 pF        | 300     |
| 5   | CD5CC090DO3F | 9 pF        | 300     |
| 5   | CD5CC100JO3F | 10 pF       | 300     |
| 5   | CD5CC110DO3F | 11 pF       | 300     |
| 5   | CD5CC120JO3F | 12 pF       | 300     |
| 5   | CD5CC150JO3F | 15 pF       | 300     |
| 5   | CD5CC180JO3F | 18 pF       | 300     |
| 5   | CD5EC200JO3F | 20 pF       | 300     |
| 5   | CD5EC200DO3F | 20 pF       | 300     |
| 5   | CD5EC220JO3F | 22 pF       | 300     |
| 5   | CD5EC300JO3F | 30 pF       | 300     |
| 5   | CD5EC300GO3F | 30 pF       | 300     |
| 5   | CD5EC330JO3F | 33 pF       | 300     |
| 5   | CD5EC330GO3F | 33 pF       | 300     |
| 5   | CD5EC390JO3F | 39 pF       | 300     |
| 5   | CD5EC390GO3F | 39 pF       | 300     |
| 5   | CD5EC470JO3F | 47 pF       | 300     |
| 5   | CD5EC470GO3F | 47 pF       | 300     |
| 5   | CD5EC510JO3F | 51 pF       | 300     |
| 5   | CD5EC510GO3F | 51 pF       | 300     |
| 5   | CD5EC560JO3F | 56 pF       | 300     |
| 5   | CD5EC620JO3F | 62 pF       | 300     |
| 5   | CD5EC620GO3F | 62 pF       | 300     |
| 5   | CD5EC680JO3F | 68 pF       | 300     |
| 5   | CD5EC680GO3F | 68 pF       | 300     |
| 5   | CD5EC750JO3F | 75 pF       | 300     |
| 5   | CD5EC750GO3F | 75 pF       | 300     |
| 5   | CD5EC820JO3F | 82 pF       | 300     |
| 5   | CD5EC820GO3F | 82 pF       | 300     |
| 5   | CD5FC101JO3F | 100 pF      | 300     |
| 5   | CD5FC101GO3F | 100 pF      | 300     |
| 5   | CD5FC121JO3F | 120 pF      | 300     |
| 5   | CD5FC121GO3F | 120 pF      | 300     |

**MICA-KIT5A**

**CONTENTS:**

12 PART#S - MIX OF CD16, CD30, CDV16 AND CDV30

(qtys as noted)



| QTY | CAPACITOR PN  | CAPACITANCE | VOLTAGE |
|-----|---------------|-------------|---------|
| 10  | CD16FD101JO3  | 100 pF      | 500     |
| 10  | CD16FD331JO3  | 330 pF      | 500     |
| 10  | CD16FD681JO3  | 680 pF      | 500     |
| 5   | CD16FD102JO3  | 1000 pF     | 500     |
| 5   | CD16FD222JO3  | 2200 pF     | 500     |
| 3   | CD30FD682JO3  | 6800 pF     | 500     |
| 3   | CD30FD103JO3  | 10000 pF    | 500     |
| 5   | CDV16FF331JO3 | 330 pF      | 1000    |
| 5   | CDV16FF681JO3 | 680 pF      | 1000    |
| 3   | CDV16FF102JO3 | 1000 pF     | 1000    |
| 3   | CDV30FF682JO3 | 6800 pF     | 1000    |
| 2   | CDV30FF103JO3 | 10000 pF    | 1000    |

**MICA-KIT5AF**

**CONTENTS:**

12 RoHS PART#S - MIX OF CD16, CD30, CDV16 AND CDV30

(qtys as noted)



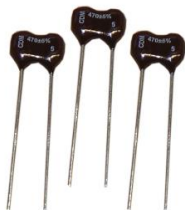
| QTY | CAPACITOR PN   | CAPACITANCE | VOLTAGE |
|-----|----------------|-------------|---------|
| 10  | CD16FD101JO3F  | 100 pF      | 500     |
| 10  | CD16FD331JO3F  | 330 pF      | 500     |
| 10  | CD16FD681JO3F  | 680 pF      | 500     |
| 5   | CD16FD102JO3F  | 1000 pF     | 500     |
| 5   | CD16FD222JO3F  | 2200 pF     | 500     |
| 3   | CD30FD682JO3F  | 6800 pF     | 500     |
| 3   | CD30FD103JO3F  | 10000 pF    | 500     |
| 5   | CDV16FF331JO3F | 330 pF      | 1000    |
| 5   | CDV16FF681JO3F | 680 pF      | 1000    |
| 3   | CDV16FF102JO3F | 1000 pF     | 1000    |
| 3   | CDV30FF682JO3F | 6800 pF     | 1000    |
| 2   | CDV30FF103JO3F | 10000 pF    | 1000    |

**MICA-KIT6**

**CONTENTS:**

10 -CD4 PART#S

(qtys as noted)



| QTY | CAPACITOR PN | CAPACITANCE | VOLTAGE |
|-----|--------------|-------------|---------|
| 10  | CD4CD020CO3  | 2 pF        | 500     |
| 10  | CD4CD100CO3  | 10 pF       | 500     |
| 7   | CD4ED220JO3  | 22 pF       | 500     |
| 7   | CD4ED330JO3  | 33 pF       | 500     |
| 7   | CD4ED470JO3  | 47 pF       | 500     |
| 7   | CD4ED680JO3  | 68 pF       | 500     |
| 7   | CD4FD101JO3  | 100 pF      | 500     |
| 4   | CD4FD471JO3  | 470 pF      | 500     |
| 4   | CD4FA102JO3  | 1000 pF     | 100     |
| 4   | CD4FA152JO3  | 1500 pF     | 100     |

**MCF100VKIT6**

**CONTENTS:**

5 PCS EA. OF 7 MC22 1000V PART#S



| QTY | CAPACITOR PN | CAPACITANCE | VOLTAGE |
|-----|--------------|-------------|---------|
| 5   | MC22FF101J-F | 100 pF      | 1000    |
| 5   | MC22FF221J-F | 220 pF      | 1000    |
| 5   | MC22FF331J-F | 330 pF      | 1000    |
| 5   | MC22FF471J-F | 470 pF      | 1000    |
| 5   | MC22FF391J-F | 390 pF      | 1000    |
| 5   | MC22FF102J-F | 1000 pF     | 1000    |
| 5   | MC22FF152J-F | 1500 pF     | 1000    |

**MCF100VKIT4**

**CONTENTS:**

5 PCS EA. OF 10 100V PART#S - MIX OF SIZES



| QTY | CAPACITOR PN | CAPACITANCE | VOLTAGE |
|-----|--------------|-------------|---------|
| 5   | MC08CA050D-F | 5 pF        | 100     |
| 5   | MC08CA100D-F | 10 pF       | 100     |
| 5   | MC08EA220J-F | 22 pF       | 100     |
| 5   | MC12FA470J-F | 47 pF       | 100     |
| 5   | MC12FA820J-F | 82 pF       | 100     |
| 5   | MC12FA101J-F | 100 pF      | 100     |
| 5   | MC18FA471J-F | 470 pF      | 100     |
| 5   | MC22FA102J-F | 1000 pF     | 100     |
| 5   | MC08EA150J-F | 15 pF       | 100     |
| 5   | MC18FA751J-F | 750 pF      | 100     |

### MCF500VKIT5

#### CONTENTS:

5 PCS EA. OF 11 500V PART#S - MIX OF SIZES

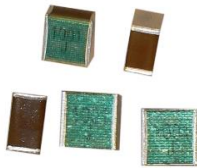


| QTY | CAPACITOR PN | CAPACITANCE | VOLTAGE |
|-----|--------------|-------------|---------|
| 5   | MC12CD050D-F | 5 pF        | 500     |
| 5   | MC12CD100D-F | 10 pF       | 500     |
| 5   | MC12ED150J-F | 15 pF       | 500     |
| 5   | MC12FD330J-F | 33 pF       | 500     |
| 5   | MC12FD470J-F | 47 pF       | 500     |
| 5   | MC12FD680J-F | 68 pF       | 500     |
| 5   | MC12FD101J-F | 100 pF      | 500     |
| 5   | MC18FD221J-F | 220 pF      | 500     |
| 5   | MC18FD331J-F | 330 pF      | 500     |
| 5   | MC18FD471J-F | 470 pF      | 500     |
| 5   | MC22FD102J-F | 1000 pF     | 500     |

### MCH2500VKIT8

#### CONTENTS:

5 PCS. EA. OF 8 MCH38 2500V PART#S

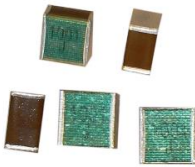


| QTY | CAPACITOR PN | CAPACITANCE | VOLTAGE |
|-----|--------------|-------------|---------|
| 5   | MCH38FK271J  | 270 pF      | 2500    |
| 5   | MCH38FK331J  | 330 pF      | 2500    |
| 5   | MCH38FK391J  | 390 pF      | 2500    |
| 5   | MCH38FK471J  | 470 pF      | 2500    |
| 5   | MCH38FK561J  | 560 pF      | 2500    |
| 5   | MCH38FK681J  | 680 pF      | 2500    |
| 5   | MCH38FK821J  | 820 pF      | 2500    |
| 5   | MCH38FK102J  | 1000 pF     | 2500    |

### MCH4000VKIT10

#### CONTENTS:

5 PCS. EA. OF 10 MCH38 4000V PART#S

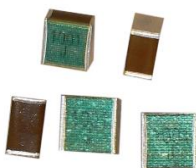


| QTY | CAPACITOR PN | CAPACITANCE | VOLTAGE |
|-----|--------------|-------------|---------|
| 5   | MCH38FM100D  | 10 pF       | 4000    |
| 5   | MCH38FM150J  | 15 pF       | 4000    |
| 5   | MCH38FM220J  | 22 pF       | 4000    |
| 5   | MCH38FM330J  | 33 pF       | 4000    |
| 5   | MCH38FM470J  | 47 pF       | 4000    |
| 5   | MCH38FM680J  | 68 pF       | 4000    |
| 5   | MCH38FM101J  | 100 pF      | 4000    |
| 5   | MCH38FM121J  | 120 pF      | 4000    |
| 5   | MCH38FM151J  | 150 pF      | 4000    |
| 5   | MCH38FM221J  | 220 pF      | 4000    |

### MCHN2500VKIT9

#### CONTENTS:

5 PCS. EA. OF 8 MCHN38 2500V PART#S

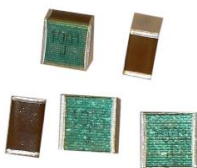


| QTY | CAPACITOR PN | CAPACITANCE | VOLTAGE |
|-----|--------------|-------------|---------|
| 5   | MCHN38FK271J | 270 pF      | 2500    |
| 5   | MCHN38FK331J | 330 pF      | 2500    |
| 5   | MCHN38FK391J | 390 pF      | 2500    |
| 5   | MCHN38FK471J | 470 pF      | 2500    |
| 5   | MCHN38FK561J | 560 pF      | 2500    |
| 5   | MCHN38FK681J | 680 pF      | 2500    |
| 5   | MCHN38FK821J | 820 pF      | 2500    |
| 5   | MCHN38FK102J | 1000 pF     | 2500    |

### MCHN4000VKIT11

#### CONTENTS:

5 PCS. EA. OF 10 MCHN38 4000V PART#S



| QTY | CAPACITOR PN | CAPACITANCE | VOLTAGE |
|-----|--------------|-------------|---------|
| 5   | MCHN38FM100D | 10 pF       | 4000    |
| 5   | MCHN38FM150J | 15 pF       | 4000    |
| 5   | MCHN38FM220J | 22 pF       | 4000    |
| 5   | MCHN38FM330J | 33 pF       | 4000    |
| 5   | MCHN38FM470J | 47 pF       | 4000    |
| 5   | MCHN38FM680J | 68 pF       | 4000    |
| 5   | MCHN38FM101J | 100 pF      | 4000    |
| 5   | MCHN38FM121J | 120 pF      | 4000    |
| 5   | MCHN38FM151J | 150 pF      | 4000    |
| 5   | MCHN38FM221J | 220 pF      | 4000    |

### MCN500VKIT7

#### CONTENTS:

5 PCS. EA. OF 12 MCN 500V PART#S



| QTY | CAPACITOR PN | CAPACITANCE | VOLTAGE |
|-----|--------------|-------------|---------|
| 5   | MCN12CD010D  | 1 pF        | 500     |
| 5   | MCN12CD100D  | 10 pF       | 500     |
| 5   | MCN12ED220J  | 22 pF       | 500     |
| 5   | MCN12FD330J  | 33 pF       | 500     |
| 5   | MCN12FD470J  | 47 pF       | 500     |
| 5   | MCN18FD101J  | 100 pF      | 500     |
| 5   | MCN18FD221J  | 220 pF      | 500     |
| 5   | MCN18FD331J  | 330 pF      | 500     |
| 5   | MCN18FD471J  | 470 pF      | 500     |
| 5   | MCN22FD681J  | 680 pF      | 500     |
| 5   | MCN22FD102J  | 1000 pF     | 500     |
| 5   | MCN22FD122J  | 1200 pF     | 500     |

### MCM1000VKIT3

#### CONTENTS:

5 PCS. EA OF 7 MCM 1000V PART#S



| QTY | CAPACITOR PN      | CAPACITANCE | VOLTAGE |
|-----|-------------------|-------------|---------|
| 5   | MCM01-009EF101J-F | 100 pF      | 1000    |
| 5   | MCM01-009EF221J-F | 220 pF      | 1000    |
| 5   | MCM01-009EF331J-F | 330 pF      | 1000    |
| 5   | MCM01-009EF471J-F | 470 pF      | 1000    |
| 5   | MCM01-009EF561J-F | 560 pF      | 1000    |
| 5   | MCM01-009EF681J-F | 680 pF      | 1000    |
| 5   | MCM01-009EF751J-F | 750 pF      | 1000    |

### MCM500VKIT2

#### CONTENTS:

5 PCS. EA OF 10 MCM 500V PART#S



| QTY | CAPACITOR PN      | CAPACITANCE | VOLTAGE |
|-----|-------------------|-------------|---------|
| 5   | MCM01-009CD100J-F | 10 pF       | 500     |
| 5   | MCM01-009CD150J-F | 15 pF       | 500     |
| 5   | MCM01-009DD330J-F | 33 pF       | 500     |
| 5   | MCM01-009DD470J-F | 47 pF       | 500     |
| 5   | MCM01-009ED680J-F | 68 pF       | 500     |
| 5   | MCM01-009ED101J-F | 100 pF      | 500     |
| 5   | MCM01-009ED221J-F | 220 pF      | 500     |
| 5   | MCM01-009ED331J-F | 330 pF      | 500     |
| 5   | MCM01-009ED471J-F | 470 pF      | 500     |
| 5   | MCM01-009ED102J-F | 1000 pF     | 500     |

### MIN300VKIT1

#### CONTENTS:

5 PCS. EA. OF 13 MIN 300V PART#S



| QTY | CAPACITOR PN      | CAPACITANCE | VOLTAGE |
|-----|-------------------|-------------|---------|
| 5   | MIN02-002CC100J-F | 10 pF       | 300     |
| 5   | MIN02-002CC150J-F | 15 pF       | 300     |
| 5   | MIN02-002DC220J-F | 22 pF       | 300     |
| 5   | MIN02-002DC330J-F | 33 pF       | 300     |
| 5   | MIN02-002DC390J-F | 39 pF       | 300     |
| 5   | MIN02-002DC470J-F | 47 pF       | 300     |
| 5   | MIN02-002EC680J-F | 68 pF       | 300     |
| 5   | MIN02-002EC910J-F | 91 pF       | 300     |
| 5   | MIN02-002EC101J-F | 100 pF      | 300     |
| 5   | MIN02-002EC151J-F | 150 pF      | 300     |
| 5   | MIN02-002CC3R3D-F | 3.3 pF      | 300     |
| 5   | MIN02-002CC4R7D-F | 4.7 pF      | 300     |
| 5   | MIN02-002CC6R8D-F | 6.8 pF      | 300     |



## AFK-KIT2

### CONTENTS:

22 AFK PART#S - MIXED RATINGS

(qtys as noted)



| QTY | CAPACITOR PN    | CAPACITANCE  | VOLTAGE |
|-----|-----------------|--------------|---------|
| 10  | AFK106M25B12B-F | 10 $\mu$ F   | 25      |
| 10  | AFK226M2AF24B-F | 22 $\mu$ F   | 100     |
| 10  | AFK476M25D16B-F | 47 $\mu$ F   | 25      |
| 10  | AFK227M25F24B-F | 220 $\mu$ F  | 25      |
| 6   | AFK337M2AR44B-F | 330 $\mu$ F  | 100     |
| 10  | AFK477M25G24B-F | 470 $\mu$ F  | 25      |
| 6   | AFK108M25H32B-F | 1000 $\mu$ F | 25      |
| 6   | AFK228M25P44B-F | 2200 $\mu$ F | 25      |
| 10  | AFK226M16B12B-F | 22 $\mu$ F   | 16      |
| 10  | AFK107M16D16B-F | 100 $\mu$ F  | 16      |
| 10  | AFK337M16F24B-F | 330 $\mu$ F  | 16      |
| 6   | AFK157M2AP44B-F | 150 $\mu$ F  | 100     |
| 10  | AFK106M35B12B-F | 10 $\mu$ F   | 35      |
| 10  | AFK476M35D16B-F | 47 $\mu$ F   | 35      |
| 6   | AFK477M35H32B-F | 470 $\mu$ F  | 35      |
| 6   | AFK687M35H32B-F | 680 $\mu$ F  | 35      |
| 10  | AFK106M50C12B-F | 10 $\mu$ F   | 50      |
| 10  | AFK476M50E16B-F | 47 $\mu$ F   | 50      |
| 10  | AFK107M50F24B-F | 100 $\mu$ F  | 50      |
| 10  | AFK227M50G24B-F | 220 $\mu$ F  | 50      |
| 6   | AFK337M50H32B-F | 330 $\mu$ F  | 50      |
| 6   | AFK108M50P44B-F | 1000 $\mu$ F | 50      |

## AVS-F-KIT2

### CONTENTS:

10 PCS. EA OF 9 AVS PART#S - POPULAR RATINGS



| QTY | CAPACITOR PN    | CAPACITANCE | VOLTAGE |
|-----|-----------------|-------------|---------|
| 10  | AVS107M16D16B-F | 100 $\mu$ F | 16      |
| 10  | AVS107M25E16B-F | 100 $\mu$ F | 25      |
| 10  | AVS107M50F24B-F | 100 $\mu$ F | 50      |
| 10  | AVS107M63G24B-F | 100 $\mu$ F | 63      |
| 10  | AVS225M50B12B-F | 2.2 $\mu$ F | 50      |
| 10  | AVS227M25F24B-F | 220 $\mu$ F | 25      |
| 10  | AVS336M16C12B-F | 33 $\mu$ F  | 16      |
| 10  | AVS475M35B12B-F | 4.7 $\mu$ F | 35      |
| 10  | AVS476M16C12B-F | 47 $\mu$ F  | 16      |

## SK-001 (ORANGE DROP KIT)

### CONTENTS:

6 PCS EA -

6 POLYESTER PART#S

6 POLYPROPYLENE PART#S



| QTY | CAPACITOR PN | CAPACITANCE    | VOLTAGE |
|-----|--------------|----------------|---------|
| 6   | 715P10356KA3 | 0.01 $\mu$ F   | 600     |
| 6   | 6PSS10       | 0.01 $\mu$ F   | 600     |
| 6   | 715P56256JA3 | 0.0056 $\mu$ F | 600     |
| 6   | 6PSD56       | 0.0056 $\mu$ F | 600     |
| 6   | 715P10456LA3 | 0.1 $\mu$ F    | 600     |
| 6   | 6PSP10       | 0.1 $\mu$ F    | 600     |
| 6   | 715P22356KA3 | 0.022 $\mu$ F  | 600     |
| 6   | 6PSS22       | 0.022 $\mu$ F  | 600     |
| 6   | 715P33256JA3 | 0.0033 $\mu$ F | 600     |
| 6   | 6PSD33       | 0.0033 $\mu$ F | 600     |
| 6   | 715P47356LA3 | 0.047 $\mu$ F  | 600     |
| 6   | 6PSS47       | 0.047 $\mu$ F  | 600     |