



Chipsmall Limited consists of a professional team with an average of over 10 year of expertise in the distribution of electronic components. Based in Hongkong, we have already established firm and mutual-benefit business relationships with customers from,Europe,America and south Asia,supplying obsolete and hard-to-find components to meet their specific needs.

With the principle of “Quality Parts,Customers Priority,Honest Operation,and Considerate Service”,our business mainly focus on the distribution of electronic components. Line cards we deal with include Microchip,ALPS,ROHM,Xilinx,Pulse,ON,Everlight and Freescale. Main products comprise IC,Modules,Potentiometer,IC Socket,Relay,Connector.Our parts cover such applications as commercial,industrial, and automotives areas.

We are looking forward to setting up business relationship with you and hope to provide you with the best service and solution. Let us make a better world for our industry!



Contact us

Tel: +86-755-8981 8866 Fax: +86-755-8427 6832

Email & Skype: info@chipsmall.com Web: www.chipsmall.com

Address: A1208, Overseas Decoration Building, #122 Zhenhua RD., Futian, Shenzhen, China



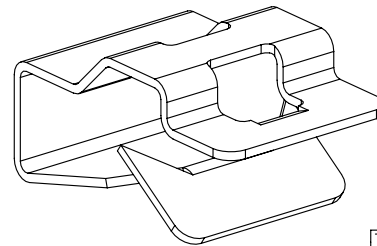
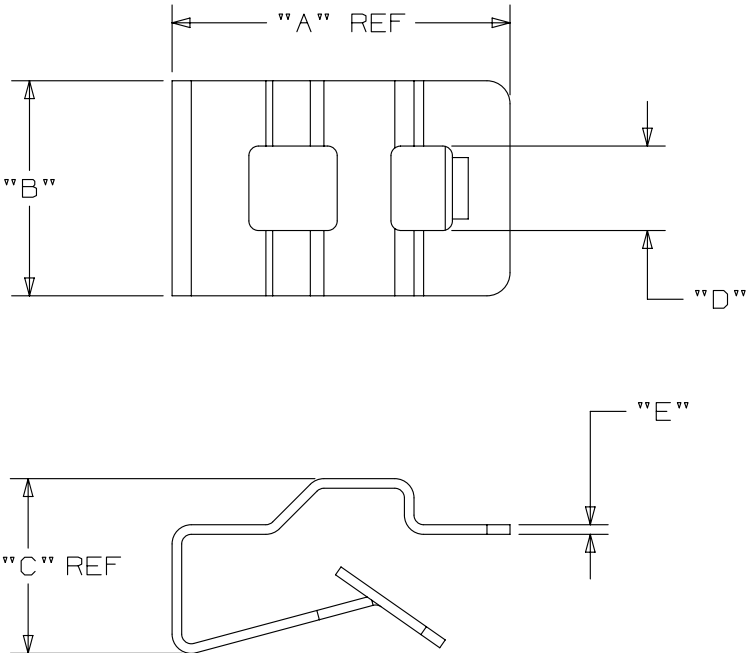
THIS COPY IS PROVIDED ON A RESTRICTED BASIS AND IS NOT TO BE USED IN ANY WAY DETRIMENTAL TO THE INTERESTS OF PANDUIT CORP.

PANDUIT PART NUMBER*	USED WITH THESE CABLE TIES **	PANEL *** THICKNESS	DIMENSIONS INCHES / [MM]					WEIGHT lbs/100 pcs (g)/100 pcs
			A (REF)	B	C (REF)	D	E	
MCMS12-P	M, I, S	0.03 - 0.125 [0.76-3.18]	0.880 [22.35]	0.560 [14.22]	0.318 [8.08]	0.220 [5.59]	0.025 [0.64]	0.59 (268)
MCMS25-P		0.125 - 0.240 [3.18 - 6.09]			0.455 [11.56]			0.728 (330)
MCMS30-P		0.220 - 0.270 [5.58 - 6.86]			0.535 [13.59]			0.798 (362)

NOTES:

- * 1. See current price sheet for part number suffix designation for package size.
- ** 2. Cable tie cross-section code:
M - miniature
I - intermediate
S - standard
- *** 3. Refer to table for panel thickness ranges for each product.
- 4. MATERIAL: AISI 1050 STEEL .025" ±.002 THICK
HEAT TREAT TO RC 46-50 AFTER FORMING

PLATING: ZINC PLATED WITH CLEAR CHROMATE
CONVERSION COATING PER
ASTM B 633-85 TYPE III CLASS 1 SC#1 MILD.



MCMS25-P
(SHOWN)

DIMENSIONS IN BRACKETS ARE METRIC [MM]

TITLE		MCMS--P METAL CLIP ON MOUNT	
CUSTOMER DRAWING			
ITEM REVISION NAME	10B015MV/01		
DATASET FILE NAME	10B015MV/01 - GB1335BA_REV07		
UNLESS OTHERWISE SPECIFIED, DIMENSIONAL TOLERANCES ARE: IN [mm]		MATERIAL:	
.x ± 0.05 [1.3] .xxx ± 0.015 [0.381]		SEE NOTE 4	
.xx ± 0.02 [0.5] ANGLES ± 5 °			
		DRAWING NUMBER:	
		GB1335BA	
DRAWN BY	DATE	CHK	SCALE
JAD	9/23/96		FULL
SHT 1 OF 1		SIZE	
		A	

REV	DATE	BY	CHK	APR	DESCRIPTION	ECN
07	12/3/14	MBY	MPH	JADE	REVISED DIM 'C'	GB1335BA/07
06	5/29/14	MBY	MPH	JADE	MADE DIM "A" REF. AND INCREASED .XXX TOLERANCE FROM .010 TO .015. UPDATED TITLE BORDER .	GB1335BA/06